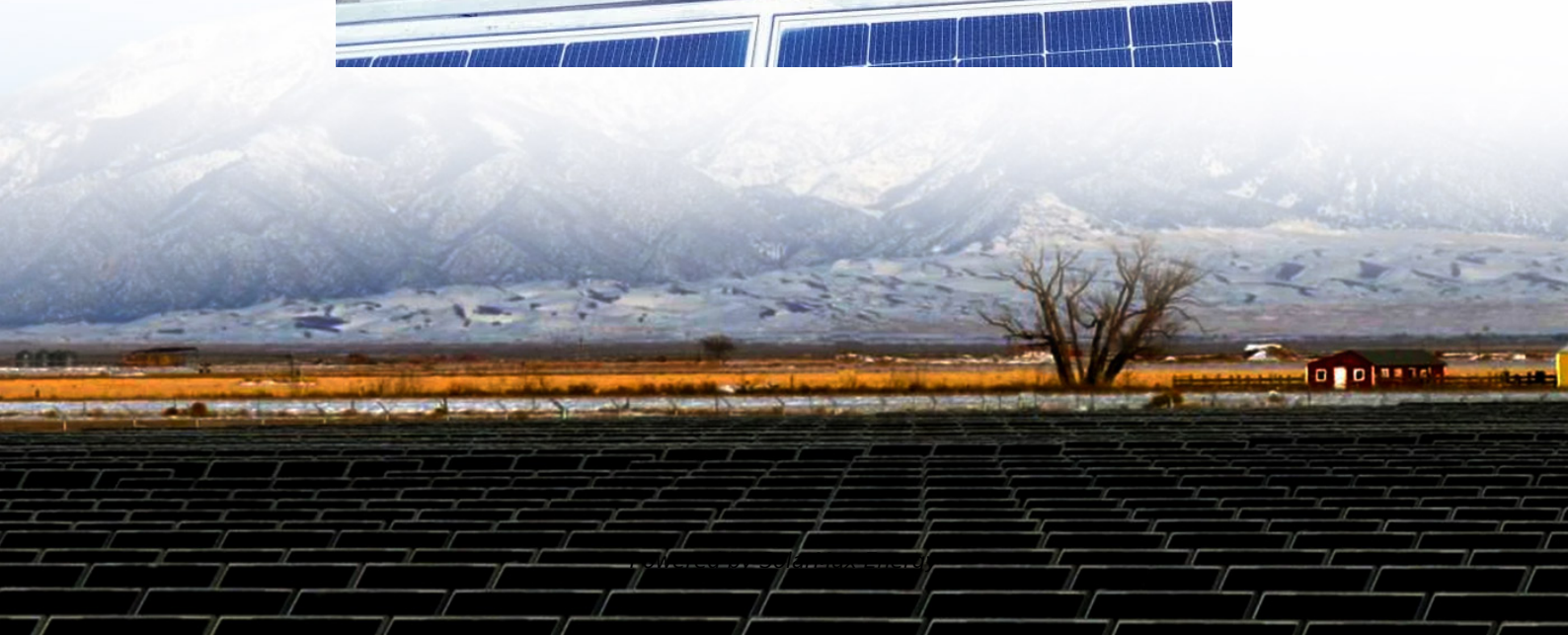


1 5MW wind power generation system





Overview

What is a GE 1.5 MW wind turbine?

GE's 1.5 MW series is represented by three-blade, upwind, horizontal axis wind turbines with a rated capacity of 1.5-megawatts. Three different models represent the 1.5 MW series – 1.5se, 1.5sle, and 1.5xle. The rotor on a GE 1.5 MW turbine is designed to operate in an upwind configuration at 10 to 20 revolutions per minute (rpm).

What is a 1.5 MW wind turbine?

Building on a strong power generation heritage spanning more than a century, our 1.5 MW wind turbine—also known as the industry workhorse—delivers proven performance and reliability, creating more value for our customers. Our product strategy is focused on results that contribute to our customers' success and wind farm return on investment.

Why should you buy a 1.5 MW wind turbine?

That's why the 1.5 MW wind turbine has been engineered for ease of integration and delivery to a wide range of locations, including those with challenging site conditions. Our global project management and fulfillment expertise offer customers on-time certainty.

What is a S82 - 1.5 MW wind turbine?

S82 - 1.5 MW is designed for generating the optimal power output even at sites with a modest wind speed regime. The wind turbine concept is based on robust design with pitch regulated blade operation, a 3-stage gearbox with 1,650 kW rating and flexible coupling to the asynchronous induction generator.

What makes GE a great wind turbine?

GE's 1.5 MW wind turbine is designed to maximize customer value by providing proven performance and reliability. GE's commitment to customer



satisfaction drives our continuous investment in the evolution of the 1.5 MW wind turbine through technological enhancements. Cap. Factor (%) 39 48.

What is a GE 1.5-77 wind turbine?

The 1.5-77 turbine is designed for the most robust wind resource environments on the planet. Focusing on performance, reliability, efficiency, and multi-generational product evolution, GE's Class I 1.5-77 wind turbine continues to deliver wind product leadership.



1 5MW wind power generation system



Buffalo Gap 2, Texas

The 1.5MW wind turbine is active yaw and pitch regulated with power/torque control capability and an asynchronous generator. It uses a ...

Wind Power Generation

Wind power generation is defined as the conversion of wind energy into electrical energy using wind turbines, often organized in groups to form wind farms, which provides a clean and ...

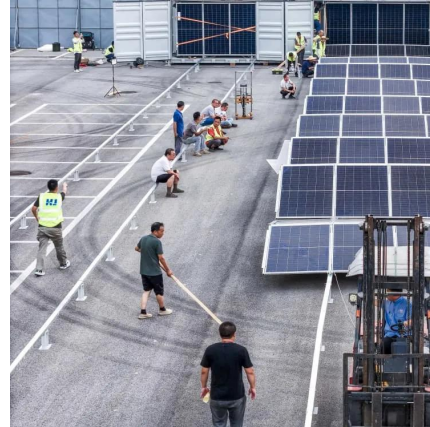


[Wind Power Generation System Product Catalog](#)

In wind power generator system, the wind power converter converts the output electric energy of generator, whose frequency and amplitude are variable, into CVCF electric energy by AC-DC ...

GE's 1.5-77 (Class I)

GE's new 1.5-77 (Class I) with Advanced Loads Control shares components with the 1.5-77 (Class II) and 1.6-82.5 creating one common 1.5 MW wind turbine series platform. ...



Modeling and Simulation of Wind Turbine Generator ...

Wind energy utilization for power generation purpose is becoming high interest in electrical power production as a result of easy access to the ...



SIMULINK model of a 1.5 MW Wind Generation Systems

The terms "wind energy" and "wind power" both describe the process by which the wind is used to generate mechanical power or electricity and this mechanical



Brochure Wind power generators High speed PM generator ...

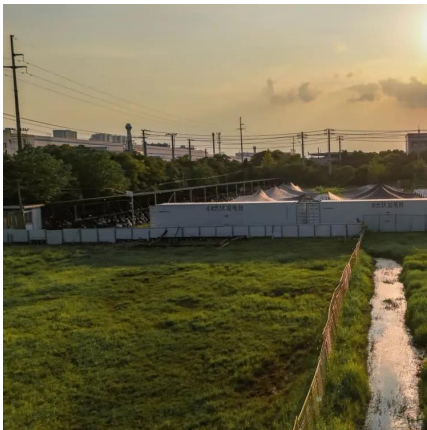
The high speed configuration with three stage gearbox is mechanically similar to doubly-fed system and provides the most straightforward route for turbine manufacturers to broaden their ...





GE's 1.5-77 (Class I)

Building on the exceptional turbine performance and reliability of our 1.5 MW series platform, GE advanced its original Class I wind turbine, the 1.5-70.5, with increased rotor ...

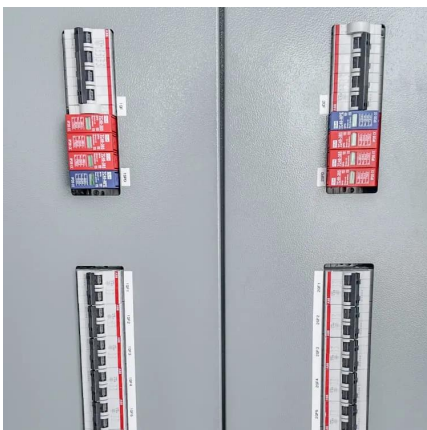
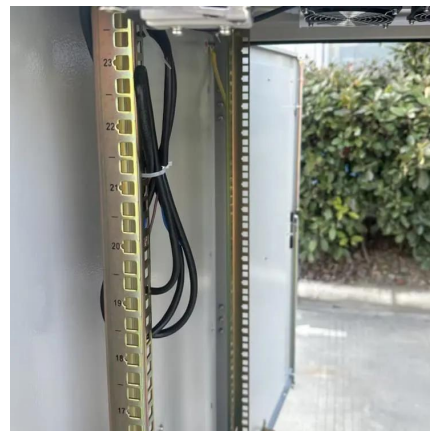


Goldwind Brochure-1.5-Web dd

Goldwind 1.5MW wind turbines feature a smaller external diameter compared to wound rotor designs. The combination of a PMG and direct-drive technology results in lowest-in-class top ...

GEA14954C 1.5 MW Brochure

Building on a strong power generation heritage spanning more than a century, our 1.5 MW wind turbine--also known as the industry workhorse--delivers proven performance and reliability, ...



MWPS Wind Turbines Media

Advancing wind capture performance As a leading global provider of energy products and services, GE continues to invest in advancing its 1.5 MW wind turbine product platform.



Permanent Magnet Synchronous Generator design optimization for wind

One of the biggest challenges is the cost of the complete wind turbine system. Among others is the design of the wind turbine generator. The desired generator should be ...



Technology - Wind Electricity

A wind turbine is a massive machine that converts wind energy into electricity via a generator. To demonstrate the functionality of these marvels, here are some ...

[Renewable Energy Fact Sheet: Wind Turbines](#)

DESCRIPTION Wind turbines can be used as Auxiliary and Supplemental Power Sources (ASPSs) for wastewater treatment plants (WWTPs). A wind turbine is a machine, or windmill, ...



MDNALAM/Combined-power-control-of-a-grid-connected-1.5-MW ...

In this master thesis, a real world problem has been addressed analytically. First section was dedicated for the wind power generation and dc link capacitor charging issue. The second was ...



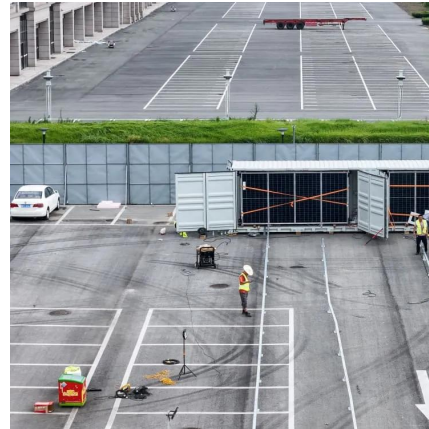
New Design_S82 Bro_06-10-2012.cdr

The turbine operation is efficiently controlled by the Suzlon controller. These technologies are all well-known in the wind power industry and have proven themselves. The S82 - 1.5 MW is ...



How Much Power Does A Wind Turbine Generate?

Wind turbines are capable of spinning their blades on hillsides, in the ocean, next to factories and above homes. The idea of letting nature provide free power to your home may ...



(PDF) Modeling and Simulation of 1.5MW Wind ...

In this paper, the relationship between output power with respect to each one (wind speed and turbine speed). Wind turbine is used to capture the ...



Wind Turbine Portfolio , GE Vernova

Built on a legacy of technical innovation and product quality, GE Vernova's workhorse onshore wind turbine fleet incorporates continuous improvements ...



1.5 MW

GW 1.5MW Item Unit Specifications Model GW
82/1500 GW 87/1500 Parameters Rated Power
kW 1500 IEC Wind Turbine Class IEC IIIA IEC S
Cut-in Wind Speed m/s 3 Rated Wind Speed ...



Technology - Wind Electricity

A wind turbine is a massive machine that converts wind energy into electricity via a generator. To demonstrate the functionality of these marvels, here are some quantities that describe the ...

General Electric - 1.5 MW Series

GE's 1.5 MW series is represented by three-blade, upwind, horizontal axis wind turbines with a rated capacity of 1.5-megawatts. Three different models represent the 1.5 MW series - 1.5se, ...



Contact Us

For catalog requests, pricing, or partnerships, please visit:
<https://www.motheopreprimary.co.za>