

12 volt current inverter





Overview

What is a 12V DC power inverter?

This is where a power inverter comes in. Definition and Working Principle A 12V DC power inverter is a device that converts low-voltage direct current (DC) power from a 12V battery (such as a car battery or deep-cycle battery) into 120V alternating current (AC) power, making it suitable for household appliances and electronic devices.

How does a 12 volt power inverter work?

This heavy duty Power Inverter connects directly to a 12 Volt DC battery to power microwaves, power tools, televisions, gaming consoles, home electronics and small appliances in your vehicle. This unit also features an LCD display, which shows the output wattage or input voltage and battery level.

What type of power does a power inverter use?

In many off-grid or mobile power scenarios, standard household appliances require AC (alternating current) power, but most batteries and vehicle power systems provide DC (direct current) power at 12 volts. This is where a power inverter comes in. Definition and Working Principle.

What is a 12V car power inverter?

A 12V car power inverter is a must-have for road trips, mobile workstations, and emergency preparedness. It allows drivers and passengers to charge and use electronic devices directly from the vehicle's battery or cigarette lighter port. Devices Powered: Laptops, smartphones, car refrigerators, small power tools, portable gaming consoles.

Which 12V power inverter is best?

For reliability and performance, Topbull 12V power inverters are highly recommended. Known for their robust design and superior efficiency, Topbull's inverters provide stable power for a wide range of applications. Here are three



excellent options.

What is a 12 volt pure sine inverter?

High-Quality 12-Volt Pure Sine Inverters Get reliable power whenever and wherever you need it with 12-volt pure sine power inverters from The Inverter Store. These 12-volt units are generally used in cars or trucks, or smaller backup power systems, so they make an ideal option if you're looking for a portable inverter that you can take on the go.



12 volt current inverter



[Frequently Asked Questions about Inverters](#)

Frequently Asked Questions about Inverters How much battery capacity do I need with an inverter? As a rule of thumb, the minimum required battery capacity for a 12-volt system is ...

[I Tested the Best 12V to 110V Inverters](#)

3. Inverter 1000W Car Power Inverters12v DC to 110v AC Converter with Dual AC Outlets 3.0A USB and Type-C,12 Volt Inverter Car Cigarette Lighter Battery ...



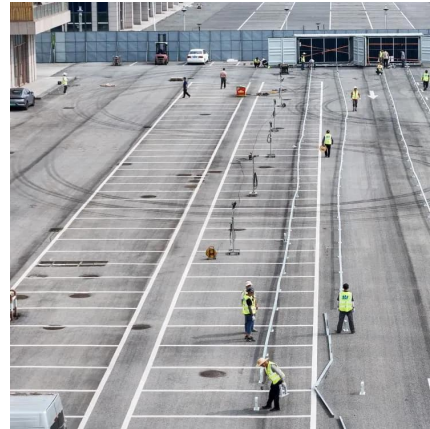
[12V DC Inverters at Tractor Supply Co.](#)

With various wattages and features available, finding the right inverter to meet your power needs is easier than ever. Explore our range of high-quality DC inverters to stay powered up ...



[Victron Energy 1200VA 12-Volt 120V AC Pure Sine ...](#)

About this item This Victron Energy Inverter allows you to power domestic equipment requiring 120VAC or 230VAC, using leisure or ...



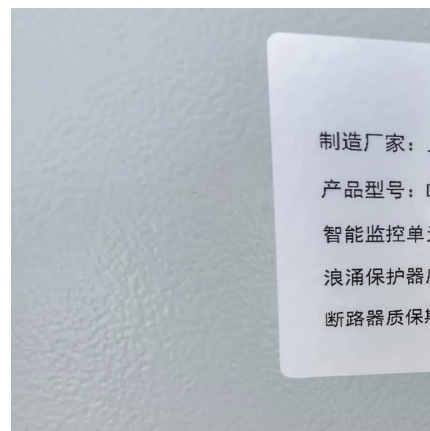
12 Volt DC Power Inverter: In-Depth Learning and Buying Guide

A 12V DC power inverter is a device that converts low-voltage direct current (DC) power from a 12V battery (such as a car battery or deep-cycle battery) into 120V alternating ...



10,000-Watt Modified Sine Inverter 12-Volt DC to 120 ...

Product Details About This Product This 10000-Watt 12-Volt inverter is the best on the market in its class guaranteed. This inverter can ...



12 Volt Inverters With Battery Charger

Power Inverters with built in direct current battery chargers provide a uninterruptible power supply. If you require a home power supply backup this would be the solution.



Amazon : 12 Volt Power Inverters

1000 Watt Power Inverter 12V DC to 110V/120V AC Car Inverter with LCD Screen Display, 2 AC Outlets, 36W Type-C Port, 5V/3A USB Port, Car Power Converter for Truck, Home, Vehicles, ...



[12 Volt Inverter - The 15 best products compared](#)

A 12-volt inverter is an electrical device that converts 12-volt direct current (DC) to 120-volt alternating current (AC), enabling you to power appliances typically used in homes or ...

[Pure Sine 1500 Watt Power Inverter 12 Volt DC to ...](#)

The 1500 watt 12 volt dc to 120 volt ac pure sine wave power inverter outputs a pure sine wave of stable current. With a pure sine wave dc to ac power ...



[3000W 12V Pure Sine Wave Inverter , Renogy Solar](#)

Upgrade your off-grid system with the Renogy 3000W Pure Sine Wave Power Inverter. Whether for your van or cabin, this inverter is the perfect addition to power your household appliances. ...



[1,500 Pure Sine Inverter 12-Volt DC to 120-Volt AC ...](#)

Transport your generator to the jobsite with the selection of this AIMS POWER Sine Inverter DC to AC ETL Listed to UL.



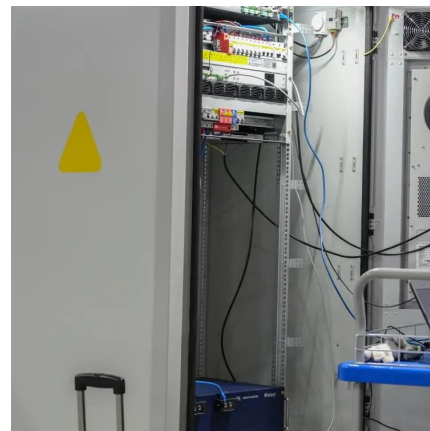
12-Volt Pure Sine Power Inverters

Get reliable power wherever you need it with high-quality, high-performance AIMS Power 12-volt pure sine power inverters from The Inverter Store.



Amazon : 12v Power Inverter

Pure Sine Wave Inverter 2000 Watt, 12V DC to 120V AC Inverters for RV, Truck, Solar, Home, Power Inverter with 3 AC Outlet, 30W USB-C, 5V 3.1A USB, Hardwire Port, Remote Control, ...



[1000 Watt Power Inverters 12 Volt DC To 110 Volt AC](#)

This (PI-1000) Royal Power power inverter takes direct current from a 12 volt battery and inverts the current into alternating 120 volt current. With 1000 ...



12 Volt DC Power Inverter: In-Depth Learning and ...

A 12V DC power inverter is a device that converts low-voltage direct current (DC) power from a 12V battery (such as a car battery or deep ...



12V Power Inverters - Inverters

This heavy duty Power Inverter connects directly to a 12 Volt DC battery to power microwaves, power tools, televisions, gaming consoles, home electronics and small appliances in your vehicle.

How to Build a 12v to 230v Inverter Circuit: A ...

A 12v to 230v inverter circuit is a device that converts 12 volt direct current (DC) power from a battery or other power source into 230 volt alternating current ...



12V Power Inverters - Inverters

This heavy duty Power Inverter connects directly to a 12 Volt DC battery to power microwaves, power tools, televisions, gaming consoles, home electronics and ...





[Inverter Amp Draw Calculator: Let's Simplify It](#)

Our inverter amp draw calculator will help you determine the amps being pulled from your inverter to avoid depletion.



[Automotive 3000 Continuous Watt, 6000 Peak Watt ...](#)

Designed to deliver 3000 continuous watts and 6000 peak watts, this inverter is perfect for transforming your vehicle's 12-Volt DC power into 120-Volt AC ...

Contact Us

For catalog requests, pricing, or partnerships, please visit:
<https://www.motheopreprimary.co.za>