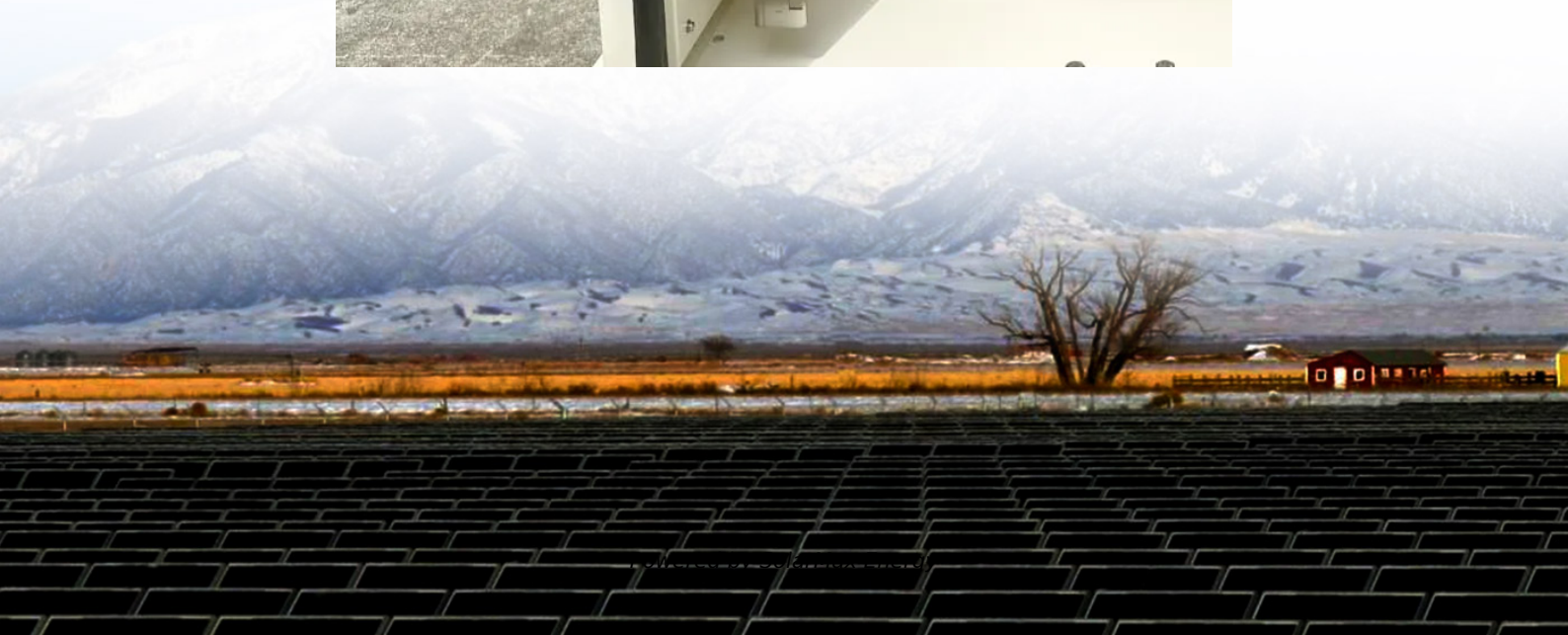


50 square meters of solar photovoltaic panels





Overview

Using a conservative estimate, 50 square meters can harness between 6 to 10 kilowatts depending on conditions. Therefore, evaluating factors like efficiency and sunlight exposure becomes essential for accurate predictions.



50 square meters of solar photovoltaic panels



[Solar Panel Watts Per Square Meter Explained](#)

Compare solar panels to see which generates most electricity per square meter. A higher W/m value means a solar panel produces more power from a given ...

[How to Calculate the Surface Area Required by Solar ...](#)

How can you do a rough estimate of the area required by the solar panels? Here is a quick and easy way to go about it. Lets assume that you ...



[How many watts of solar energy are needed for 50 ...](#)

Lastly, the choice of high-quality panels ensures longevity and reliability, significantly impacting overall output levels over time. In order to ...

Solar Panel Output per Square Meter: Efficiency Factors & Future

...

Solar panels have become a cornerstone of renewable energy, but many wonder: How much power can a single square meter of solar panels



actually produce? Let's break down the ...



[Solar Panel Watts Per Square Meter Explained](#)

Compare solar panels to see which generates most electricity per square meter. A higher W/m value means a solar panel produces more power from a given area. This can help you ...



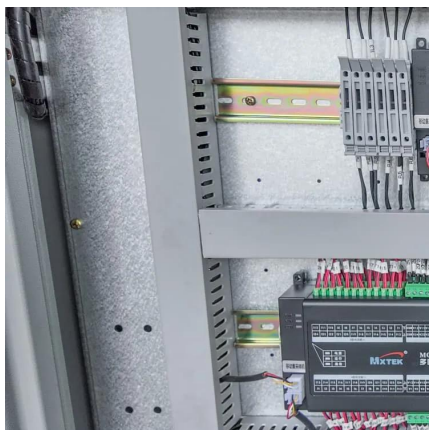
[How many degrees of solar power can a 50-square-meter](#)

A 50-square-meter solar panel installation can produce between 5 to 8 kilowatts per hour under optimal conditions, 1, factors include sunlight intensity, and 2, efficiency of the ...



[How many square meters of solar power , NenPower](#)

Solar power encompasses the conversion of sunlight to electricity, typically realized through the implementation of photovoltaic cells which ...





How many watts of solar energy are needed for 50 ...

On average, a solar panel can generate around 150-250 watts per square meter. For a 50 square meter installation, this translates to a potential ...

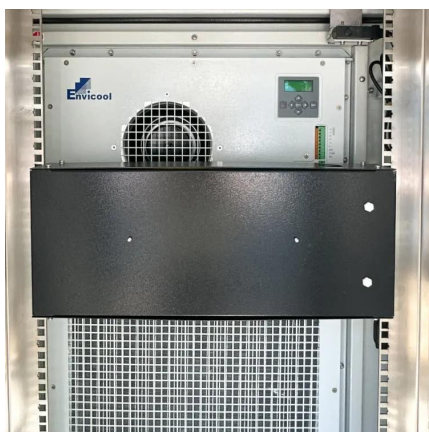


How Much Power (Watts) does a Solar Panel Produce?

When comparing different solar panels in the market, you should consider all the previously discussed questions and make a wise choice. Working out all ...

Total Area Required for Solar Panel Installation Calculator

Calculate the total area needed for your solar panel installation quickly and accurately with our easy-to-use solar panel area calculator.



How Big is a Solar Panel? The Solar Panel Size Guide

How Big Is a Solar Panel? What is the most common solar panel size for homes? For a residential solar panel, size is fairly consistent across manufacturers: 65 inches (1.65 meters) by 39 ...



50 square meters of photovoltaic solar power generation

How much is a square meter of photovoltaic power? Take 5,000 watts of household photovoltaic power generation as an example. 5000 watts of light can emit 5 kWh per hour. 5,000 watts of ...



Solar Rooftop Calculator , Solar Panel Calculator

Online Solar Roof Top Calculator Calculates the number of solar panels, kilowatt capacity, daily unit production, and require area in Square Meter as well as Square Feet based on the ...

Solar Power per Square Meter Calculator

A solar power per square meter calculator takes details regarding these factors and then gives the accurate output generated by the solar panel per square meter.



50 square meters of solar photovoltaic power generation

What is solar panel watts per square meter (W/M)? Solar panel watts per square meter (W/m) measures the power output of a solar panel based on its size. Compare solar panels to see ...



Solar Panel Power Per Square Meter: How to ...

Calculating the solar panel power per square meter is an essential step in understanding the efficiency and potential of solar energy systems. By ...



Solar Power per Square Meter Calculator

Solar panels have become a cornerstone of renewable energy, but many wonder: How much power can a single square meter of solar panels actually produce? ...

How many square meters of solar panels does a ...

Solar panel power: approximately 175 Wp/m².
Calculation: $4000/175 = 22.8$. Minimum required area: approximately 23 m². In this scenario, a roof area of ...



How many square meters of solar panels does a family need?

Solar panel power: approximately 175 Wp/m².
Calculation: $4000/175 = 22.8$. Minimum required area: approximately 23 m². In this scenario, a roof area of 6×4 meters would already be ...



how to calculate square meters of photovoltaic cells

Determine the Size of the Solar Panels The first step in calculating the square meters of photovoltaic cells is to determine the size of the solar panels that will be used. Solar panels ...



How much does it cost to install 50 square meters of solar energy

To install 50 square meters of solar energy, 1. expenses vary, 2. equipment selection influences pricing, 3. installation fees can differ profoundly, 4. geographical factors ...



Calculation of the surface area of a solar panel

Calculate the surface area of a solar panel using precise formulas, measurement tips, and expert guidance to maximize energy efficiency.



How many watts of solar energy are needed for 50 square meters

On average, a solar panel can generate around 150-250 watts per square meter. For a 50 square meter installation, this translates to a potential production of 7.5 to 12.5 ...



[How Many Square Meters Is One Solar Panel?](#)

Standard residential panels are around 1.6 meters by 1 meter, allowing efficient coverage of roof space without overwhelming the structure. Commercial Use: Businesses ...

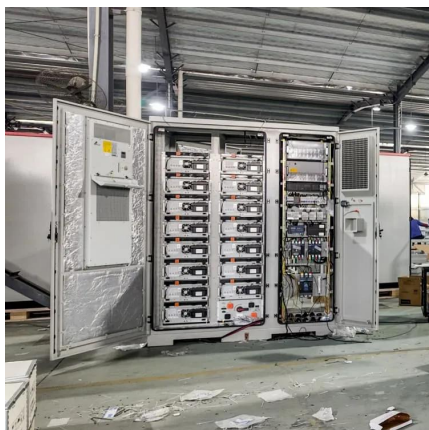
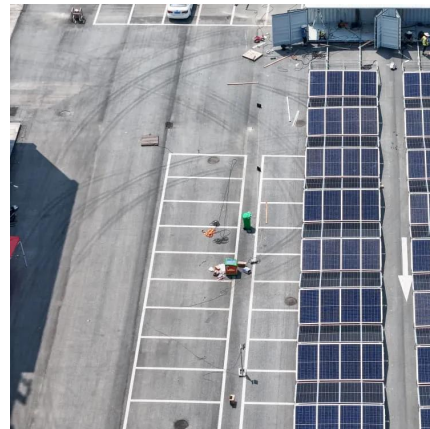


50 Square Meters of Photovoltaic Panels on the Roof: Your ...

Did you know a typical 50m² rooftop solar installation can power 85% of an average household's electricity needs? As energy prices soar globally (the U.S. saw a 12% spike last quarter ...

[Solar Rooftop Calculator: How Many Solar Panels ...](#)

Now, by average solar panel wattage per square foot, we can put a 10.35kW solar system on an 800 sq ft roof. This is how many solar panels you can put on this ...



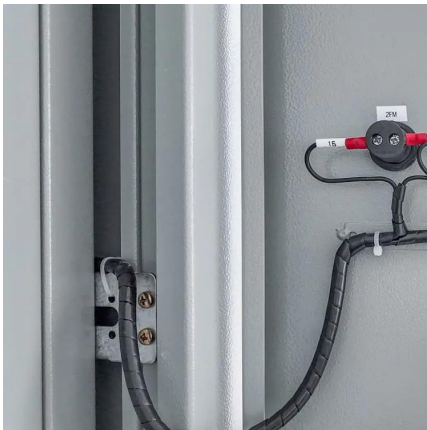
[Total Area Required for Solar Panel Installation ...](#)

Calculate the total area needed for your solar panel installation quickly and accurately with our easy-to-use solar panel area calculator.



How much solar power is 50 square meters , NenPower

Harnessing solar power from a modest 50 square meters encapsulates the transformative potential of investing in renewable resources. Through careful consideration ...



How to Calculate the Surface Area Required by Solar Panels

How can you do a rough estimate of the area required by the solar panels? Here is a quick and easy way to go about it. Lets assume that you want to install 10 solar panels rated ...



Solar Panel Dimensions Sizes and Wattage

Solar panel dimensions is an essential criterion to consider when planning a photovoltaic solar installation. So, how big is a solar panel?



Contact Us

For catalog requests, pricing, or partnerships, please visit:
<https://www.motheopreprimary.co.za>