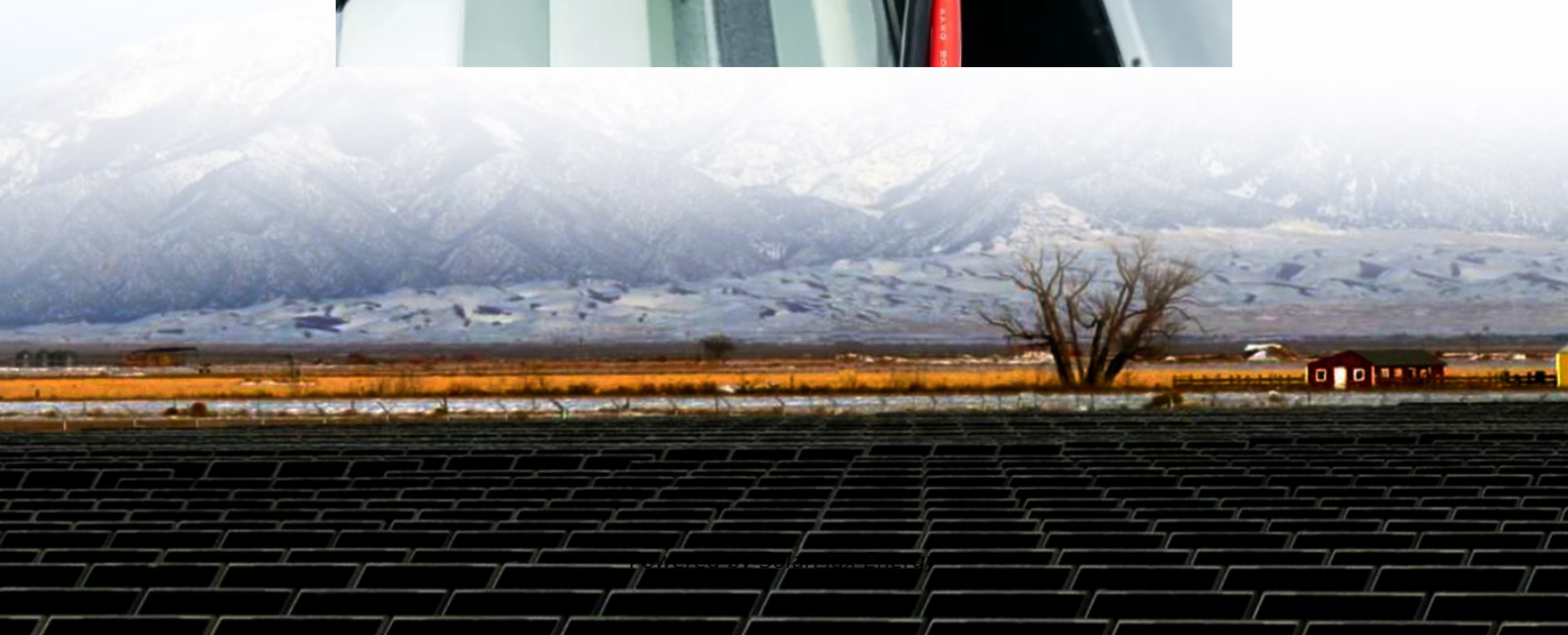


Base station wind power generation process





Base station wind power generation process



Electricity generation from wind

Wind turbines use blades to collect the wind's kinetic energy. Wind flows over the blades creating lift (similar to the effect on airplane wings), which causes the blades to turn. ...

How Do Wind Turbines Work?

Wind turbines work on a simple principle: instead of using electricity to make wind--like a fan--wind turbines use wind to make electricity. Wind turns the propeller-like blades of a ...



Introduction to Power Generation

Power generation is how we convert primary sources of energy into electricity. Learn about power generation and transmission.



Optimal Scheduling of 5G Base Station Energy Storage Considering Wind

The paper also describes the process of modeling wind generation, collecting and transmitting real-time data to a web server via the HTTPS



protocol.



Electricity Generation

The process consumes more electricity than it generates, but it is profitable because it takes advantage of the unique economics of power generation that ...



Wind Power Generation: How it Works and Its Advantages

Wind power generation involves using wind power to generate electricity. It is a clean electricity source and can help replace fossil fuels. How it works and its set-up process.



Wind Power Plant: Diagram, Parts, Working

In this post, you will learn about the wind power plant and its diagram, working, the importance of wind energy, advantages, application and ...





Wind Power Plant Working Process with 4 Steps, OPEN READ

A wind power station, often known as a wind farm, captures wind's kinetic energy and turns it into electricity. Here's an explanation of how do ...

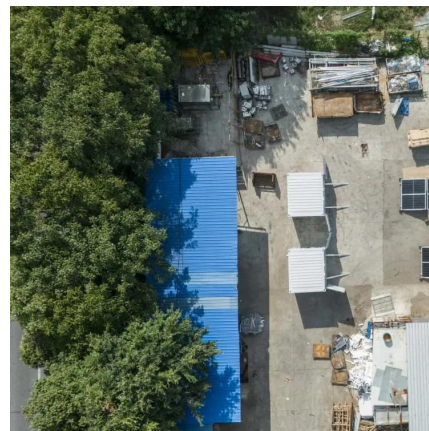


[Factsheet: Colstrip Generating Station](#)

The latter typically run only to help meet daily or seasonal peaks in customers' power usage, while combined-cycle plants often operate to help meet utility customers' base power requirements. ...

[Frontiers , IASA-Based Capacity Allocation ...](#)

The multisource complimentary energy base can achieve stable power generation of the system by using an energy storage unit for power ...



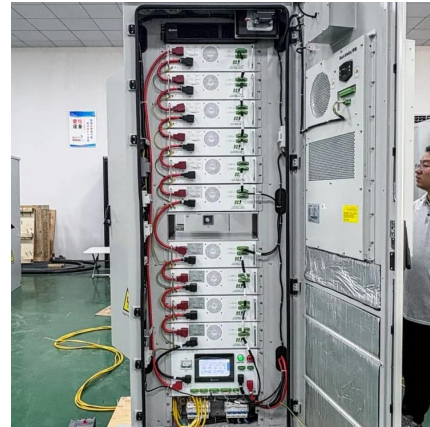
Wind turbine: what it is, parts and working , Enel Green Power

Read all about the wind turbine: what it is, the types, how it works, its main components, and much more information through our frequently asked questions.



Complete Guide To Wind Power Plants

The electric energy in these large power plants is produced in medium voltage and then transformed in high voltage and very high voltage to be injected into the grid. Energy ...

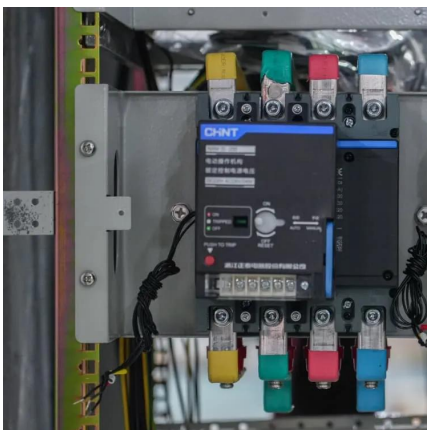
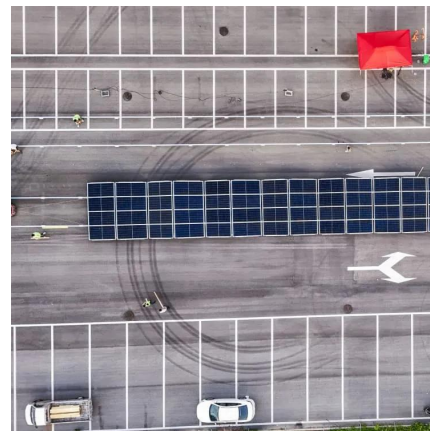


[A Comprehensive Guide to Wind Farm Construction](#)

This guide walks you through the entire wind farm construction process, from initial planning to operation, and highlights why JMS Energy is a trusted partner in renewable energy ...

Wind power

Wind power is the use of wind energy to generate useful work. Historically, wind power was used by sails, windmills and windpumps, but today it is mostly used to generate electricity. This ...



[Wind turbine: what it is, parts and working , Enel ...](#)

Read all about the wind turbine: what it is, the types, how it works, its main components, and much more information through our frequently asked questions.



Offshore wind power

Wind turbines and electrical substation of Alpha Ventus Offshore Wind Farm in the North Sea
Offshore wind power or offshore wind energy is the generation of electricity through wind farms
...



[Wind Power Generation: How it Works and Its ...](#)

Wind power generation involves using wind power to generate electricity. It is a clean electricity source and can help replace fossil fuels. How ...

[How Is Electricity Generated? Energy Production ...](#)

Wind turbines Wind turbines convert the kinetic energy in wind into electrical energy. As the wind turns the blades of the turbine, the mechanical energy ...



How Does Wind Energy Generate Electricity? Understanding the Process

This article provides a comprehensive exploration of the wind energy process, unraveling the science and technology behind wind power generation. The Mechanism of ...



Wind turbine

Thorntonbank Wind Farm, using 5 MW turbines REpower 5M in the North Sea off the coast of Belgium A wind turbine is a device that converts the kinetic ...



How wind turbines work step-by-step

Conclusion Wind turbines are a fascinating example of how technology can harness the power of nature to generate electricity. By following the step-by-step process ...



[How Do Wind Power Stations Work? A Detailed Look Inside](#)

A wind power station, often known as a wind farm, captures wind's kinetic energy and turns it into electricity. Here's an explanation of how do wind power stations work internally:



Complete Guide To Wind Power Plants

The electric energy in these large power plants is produced in medium voltage and then transformed in high voltage and very high voltage to ...





[Offshore Wind Farm Components & Construction ...](#)

Offshore Wind Power Generating System Installation Process The installation process of offshore wind power systems can be divided into two parts: the ...



[A Comprehensive Guide to Wind Farm Construction](#)

This guide walks you through the entire wind farm construction process, from initial planning to operation, and highlights why JMS Energy is a ...



[Wind Power Plant: Diagram, Parts, Working & Advantages](#)

In this post, you will learn about the wind power plant and its diagram, working, the importance of wind energy, advantages, application and more. Also, you can download the ...



Wind Power Plant Working Process with 4 Steps, OPEN READ

The wind power plant working process consists of several essential stages. In that case, fundamentals of building construction materials and methods are used to convert wind ...



Capacity planning for large-scale wind-photovoltaic-pumped ...

As shown in Fig. 4, the subject of this study is a large energy base composed of wind power stations, photovoltaic power stations, and pumped hydro storage power stations.



[How Does A Power Plant Work? , Allied Power Group](#)

A power plant is an industrial facility that converts various forms of energy into electricity. The process of generating electricity involves several components ...

Contact Us

For catalog requests, pricing, or partnerships, please visit:
<https://www.motheopreprimary.co.za>