

Battery cabinet current is unstable





Overview

What is a battery charging cabinet?

A battery charging cabinet provides a safe and efficient solution for managing these risks by offering controlled environments for both charging and storage. A lithium battery cabinet is designed to protect batteries from overheating, prevent thermal runaway, and contain any potential fires.

Are lithium ion battery storage cabinets safe?

By containing potential fires, lithium ion battery storage cabinets prevent workplace accidents, protecting employees and valuable equipment. Organizations handling lithium-ion batteries must adhere to strict safety standards. Using lithium battery storage cabinets ensures compliance with fire safety and hazardous material regulations.

Why do you need a lithium-ion battery cabinet?

These cabinets are essential for businesses and workplaces that rely on multiple lithium-ion batteries, ensuring safety and regulatory compliance. Lithium-ion batteries can overheat due to internal short circuits, overcharging, or external heat exposure.

How to choose a battery charging cabinet?

Opt for a fireproof battery charging cabinet with thermal insulation and fire-resistant materials to enhance safety. Ensure that the battery storage cabinets meet national and international safety standards for handling hazardous materials.

What is a lithium battery cabinet?

A lithium battery cabinet is designed to protect batteries from overheating, prevent thermal runaway, and contain any potential fires. These cabinets are essential for businesses and workplaces that rely on multiple lithium-ion batteries, ensuring safety and regulatory compliance.



What makes a good battery storage cabinet?

An effective battery storage cabinet includes a dual-fan system to maintain optimal temperatures by drawing in cool air and expelling heat. This helps prevent thermal runaway and extends battery lifespan. A lithium battery storage case with an in-built sump collects any leaked electrolyte, reducing the risk of short circuits and chemical damage.



Battery cabinet current is unstable



LTC4020 BATTERY CHARGER CHARGING CURRENT UNSTABLE

Battery charging setting safety current Lead-acid batteries contain sulfuric acid and only trained and authorized personnel should handle them. When talking about lead-acid batteries, people ...

8 Key Indicators of Internal Battery Damage , Midtronics

From unstable voltage readings to reduced cranking power, the indicators outlined here are important for diagnosing battery issues quickly ...



Online Battery Backup

Voltage is always present on the battery terminals. Even when discharged, a battery has the capacity to supply a high short circuit current, which in addition to causing damage to the ...

8 Key Indicators of Internal Battery Damage , Midtronics

From unstable voltage readings to reduced cranking power, the indicators outlined here are important for diagnosing battery issues quickly and accurately. Having the right tools ...



Battery Cabinet Warning Signs: Critical Indicators for Modern ...

As we stand at the crossroads of energy transition, one truth emerges clear: Understanding battery cabinet warning signs isn't just about reading indicators - it's about interpreting the ...



The Ultimate Guide to Battery Charging Cabinets: Safe Storage ...

Understanding the Importance of Battery Charging Cabinets Lithium-ion batteries power many of our everyday devices, from industrial machinery to personal electronics. However, they also ...



Battery Cabinets vs. Battery Racks

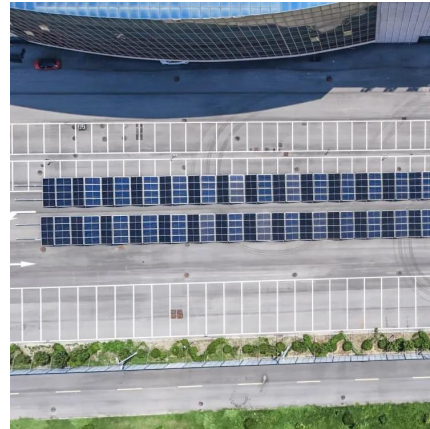
This is the seventh in a series of units that will educate you on the part played by a battery in an uninterruptible power supply (UPS) system. ...





Guide to Battery Cabinets for Lithium-Ion Batteries: 6 ...

Conclusion Choosing the right battery cabinet for lithium-ion batteries is crucial for maintaining safety in your business or facility. By ...



[Common Lithium-ion Battery Problems and How to Fix Them](#)

As widely used as lithium-ion battery, it's not uncommon that similar incidents happen every now and then. So in here in this post, we share with you some of the most ...

[EnerSys NexSys+ Battery Charger Owner's Manual](#)

Charging current declines automatically as battery voltage rises during the charge. As the battery charges, the graphical display will output various charge parameters including the percentage ...



[The Ultimate Guide to Battery Charging Cabinets: ...](#)

Discover the importance of battery charging cabinets for safe lithium-ion battery storage. Learn about key features, benefits, and best practices for workplace ...



Inverter battery current is unstable

Backup battery: Used to provide a stable DC power supply during inverter testing to ensure that the inverter is tested under normal operating conditions. Without a backup inverter battery, the ...



BESS , Battery Energy Storage Systems , Residential, ...

The Battery Energy Storage Systems (BESS) offers high-efficiency power conditioning capabilities for demand management, power dispatch, renewable energy smoothing, etc. The ESS ...

The Ultimate Guide to Battery Charging Cabinets: Safe Storage ...

Discover the importance of battery charging cabinets for safe lithium-ion battery storage. Learn about key features, benefits, and best practices for workplace safety.



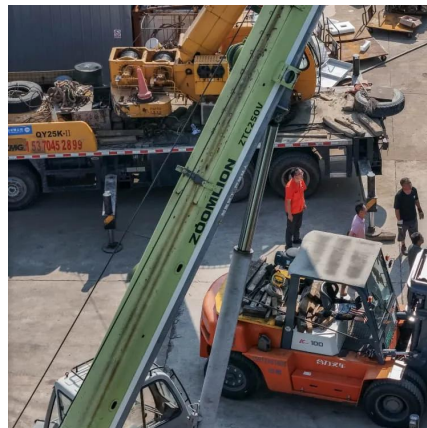
Inconsistent battery test : r/MechanicAdvice

Because when the battery is that discharged it indicates either the battery is failing, there is an unknown current drain on the vehicle, or the vehicle is not charging.



Battery Cabinet

To check for inadvertent grounding of the battery, use a digital multi-meter set to the DC Volts scale to measure the voltage between any battery terminal and either the cabinet framework ...

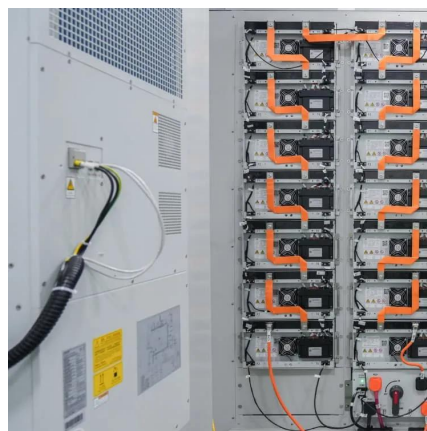


What Does Unstable Battery Mean on a Car? Warning Signs

In this article, we will explore what it means when a car's battery is unstable, the causes, symptoms, and consequences of an unstable battery, as well as the steps to diagnose ...

Security Plus II User's Manual

If using extended battery cabinet(s) and you want to change the charging current, please contact an authorized AMETEK Powervar service representative or AMETEK ...



Lithium-ion Battery Cabinets DENIOS

DENIOS' cutting-edge battery charger cabinets, integrated within our Lithium-Ion Energy Storage Cabinet lineup, guarantee secure and fire-resistant ...



How to test the internal current of the battery cabinet

Direct Current Internal Resistance, DCIR or DCR can be measured with a battery tester by applying a low current followed by higher current on the battery within a short period, and

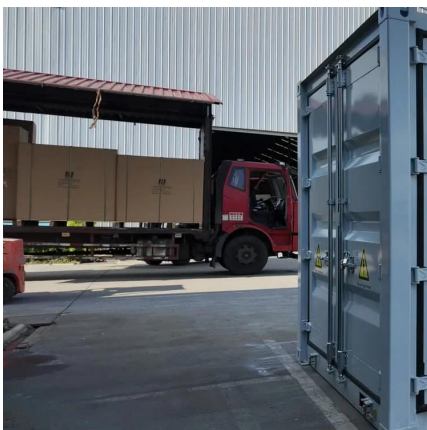


Unstable battery , Mercedes-Benz Forum

My battery went dead overnight (completely dead) so I jumped it and took it by auto zone for testing. It said "unstable battery" and the guy said he had never seen that ...

Testing a Battery To See IF the BLS Will Restore Power

While we cannot see what is going on inside a battery, we can indirectly analyze its current condition. A BLS will not be able to fix batteries with shorted cells, floating cells or open cells; ...



Battery Cabinet Cost Structure and Optimiza-tion

Chapter 2 describes how UPS devices and battery cabinets work and what their applications can be. Chapter 3 deals with the DFMA method which was used when analyzing the current ...



High quality cutting-edge DC Cabinet

The DC cabinet is mainly to aggregate and share the current distribution of each battery rack to achieve the charge and discharge management function of ...



Common Lithium-ion Battery Problems and How to ...

As widely used as lithium-ion battery, it's not uncommon that similar incidents happen every now and then. So in here in this post, we share ...

Contact Us

For catalog requests, pricing, or partnerships, please visit:
<https://www.motheopreprimary.co.za>