

# Can 12v 6w drive an inverter





## Overview

---

Our batteries store power in DC (Current current) but most of our household appliances require AC (Alternating current) Our batteries come in different voltages (12,24, & 48v) But AC appliances requir.

What is a 12V DC power inverter?

This is where a power inverter comes in. Definition and Working Principle A 12V DC power inverter is a device that converts low-voltage direct current (DC) power from a 12V battery (such as a car battery or deep-cycle battery) into 120V alternating current (AC) power, making it suitable for household appliances and electronic devices.

What is a 12V car power inverter?

A 12V car power inverter is a must-have for road trips, mobile workstations, and emergency preparedness. It allows drivers and passengers to charge and use electronic devices directly from the vehicle's battery or cigarette lighter port. Devices Powered: Laptops, smartphones, car refrigerators, small power tools, portable gaming consoles.

Which 12V power inverter is best?

For reliability and performance, Topbull 12V power inverters are highly recommended. Known for their robust design and superior efficiency, Topbull's inverters provide stable power for a wide range of applications. Here are three excellent options.

What type of power does a power inverter use?

In many off-grid or mobile power scenarios, standard household appliances require AC (alternating current) power, but most batteries and vehicle power systems provide DC (direct current) power at 12 volts. This is where a power inverter comes in. Definition and Working Principle.

Does a 240V inverter work on a 4x4?

In simpler terms: your car or 4x4 runs on 12V, but your kettle or laptop



charger needs 240V. The inverter acts as the middleman, allowing you to use household devices while camping or on the road. Inverters pull power from your vehicle's 12V battery (or a secondary battery if you have a dual battery system) and boost that power up to 240V AC.

Are 12V inverters commonly used in RVs and solar power systems?

Yes, 12V inverters are commonly used in RVs and solar power systems. When choosing an inverter for these setups, ensure that it is compatible with your battery bank and solar panel capacity. This ensures your system runs efficiently and can handle the load of various devices without issues.



## Can 12v 6w drive an inverter

---

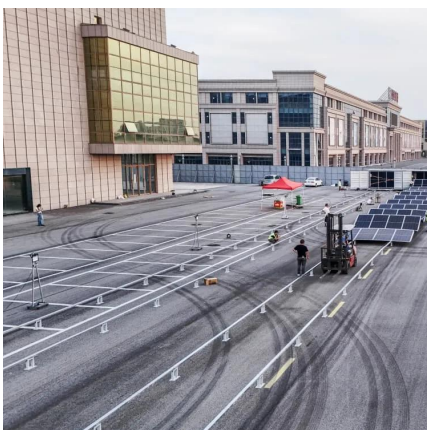


### [Can You Charge a Battery While Using an Inverter?](#)

Why You Can Charge Batteries While the Inverter Runs To better understand why you can recharge a battery even when the inverter is connected, we have to take a look at how these ...

### [How many solar panels can I use with a particular ...](#)

To determine the minimum number of solar panels you can use with an inverter, take the inverter's minimum input voltage (aka start voltage) and ...



### **inverters**

Discover how inverters power your 12V electrical system for camping and 4WD adventures. Learn how to size an inverter and see wattage ratings for common camping ...

## **Inverter Power Calculator & Formula Online Calculator Ultra**

Yes, by knowing the inverter power and battery capacity, you can estimate how long the inverter will run on the battery under a specific load. This calculator streamlines the ...



### [Troubleshooting Inverter Problems: A Step-by-Step Guide](#)

Inverters play a crucial role in many modern systems, converting DC power from sources like batteries or solar panels into AC power that can be used by household ...



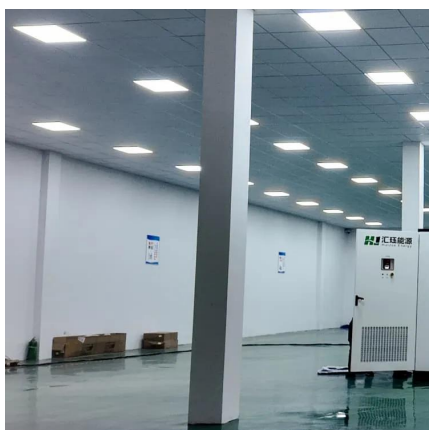
### **Can I connect an inverter to my 12v battery while my car is**

It takes more power to "run" the inverter, than the laptop. Odds are your laptop battery will run the laptop longer, than your starting battery can run the inverter, without getting ...



### [Can a 12 volt 6w power supply drive an inverter](#)

Can you use a battery inverter with a 12 volt battery? Most power inverters require a 12-volt DC input, which is the standard for car starter batteries. However, you can run an inverter from ...







## WIN 300W 12V Low Frequency Inverter Driver Board Power Module Drive

Dual 12V transformer need to choose our 12V driver board, can use them to make an inverter. The output power of the inverter is the actual efficiency of your transformer, but the maximum ...



## How to Test an Inverter

What is an inverter? Inverters are used in a variety of settings where they're needed to drive equipment ranging from electric products to large industrial ...

## Inverters Guide

Power inverters, or simply 'inverters', are transformers that will convert a DC current into an AC current, allowing you to run higher voltage equipment from a battery or other DC ...



## 12V Guru

The power that an inverter draws from your battery dwarfs that of 12v appliances. Therefore, it can have damaging effects on your battery, depending on your setup.



## What Kind Of Solar Inverters Can Drive a Water Pump?

Its input can be the regular power grid or solar power, so you can switch between them and even operate the inverter at night with a consistent power grid. Multiple types of ...



## **What does a power inverter do, and what can I use one for?**

The inverter draws its power from a 12 Volt battery (preferably deep-cycle), or several batteries wired in parallel. The battery will need to be recharged as the power is drawn out of it by the ...

## Charging Battery While Connected To Inverter ...

Can I charge a battery while it's connected to an inverter? in short, the answer is Yes, you can charge a battery while using an inverter. but make ...



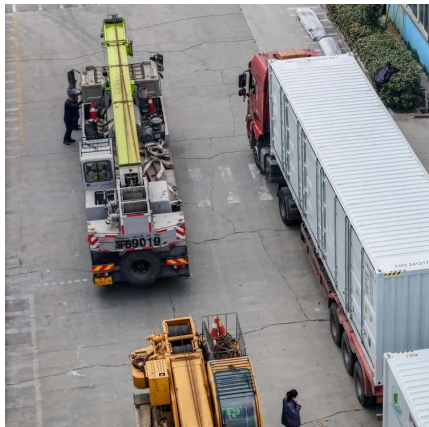
## **How many Watts @ 12v to provide 600 watts @240v Via Inverter**

Like in this case, with a 100Ah battery the original poster can use his/hers 600w/240v device via inverter for about an hour, no matter what size of solar system is install.



## How much power does an Inverter use just sitting there idling?

High frequency MOSFET drive switching is usually the dominate idle consumption but a poorly designed output PWM low pass filter can add to idle losses by having a high ...



## [How Many Solar Panels Can I Connect to an Inverter?](#)

Specifications can vary so make sure to check the inverter before connecting any solar panel to it. Generally speaking, the inverter can handle ...

## Can I connect an inverter to my 12v battery while my car is

It takes more power to "run" the inverter, than the laptop. Odds are your laptop battery will run the laptop longer, than your starting battery can run the inverter, without getting discharged to the ...



## 12 Volt DC Power Inverter: In-Depth Learning and Buying Guide

Whether you're on the road, enjoying the outdoors, or facing a power outage, a 12V inverter can keep essential devices running. Below are some of the most common uses ...





## What Will An Inverter Run & For How Long? (With Calculator)

So I'm gonna explain to you guys in simple words about what you can run on your any size inverter and what are the key point to keep in mind. And also how long your inverter ...



## Inverters Guide

Power inverters, or simply 'inverters', are transformers that will convert a DC current into an AC current, allowing you to run higher voltage ...

## [12 Volt DC Power Inverter: In-Depth Learning and ...](#)

Whether you're on the road, enjoying the outdoors, or facing a power outage, a 12V inverter can keep essential devices running. Below are ...



## [Can I Use an Inverter to Charge a Battery](#)

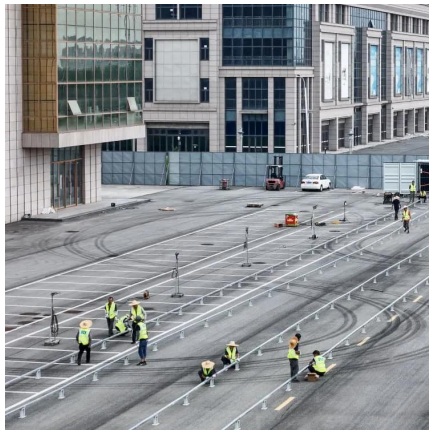
Learn how using an inverter can charge your battery effectively and safely, ensuring your power needs are met confidently and reliably.



## Frequently Asked Questions About Power Inverters , DonRowe

Short Answer: The size you choose depends on the watts (or amps) of what you want to run (find the power consumption by referring to the specification plate on the appliance or tool). We

...

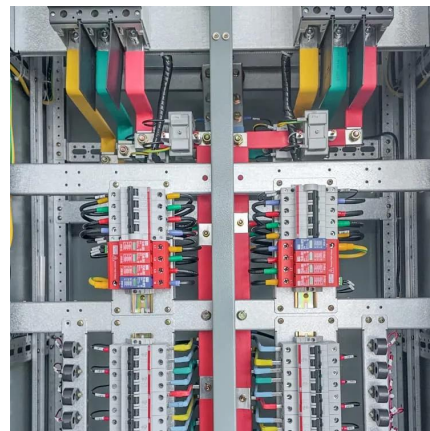


### [Building a 12v to 240v Inverter: A Comprehensive ...](#)

Find a circuit diagram for a 12v to 240v inverter and learn how to build your own inverter for converting DC power to AC power in order to power electronic ...

### [What Inverter Size Do I Need to Run Power Tools?](#)

Power tools demand lots of energy, but an inverter can work with the right specs. Use this chart to find the inverter size you need.



## Contact Us

---

For catalog requests, pricing, or partnerships, please visit:  
<https://www.motheopreprimary.co.za>