

Can Taipei lithium battery inverter be used





Overview

Yes, you can connect an inverter to a lithium battery. Lithium batteries, particularly Lithium Iron Phosphate (LiFePO4) batteries, are well-suited for use with inverters due to their high efficiency, lightweight design, and ability to deliver consistent power. Are inverters compatible with lithium batteries?

Understanding the basics of inverters and different battery options sets the stage for exploring the compatibility between inverters and lithium batteries. Lithium batteries have revolutionized the world of inverters, offering a range of advantages that make them an ideal choice for powering these devices.

What is a lithium battery for inverter?

Lithium offers unmatched performance, a longer lifespan, and better efficiency than traditional batteries. Whether you're setting up a home backup system, solar power solution, or mobile energy unit, this guide will walk you through everything you need to know about lithium batteries for inverters. Part 1.

Which battery should I use for my inverter?

When it comes to powering your inverter, there are a few alternative options to consider aside from lithium batteries. While lithium batteries have gained popularity due to their numerous advantages, they may not be the right choice for everyone. One alternative option is lead-acid batteries.

Can a solar inverter be used with a lithium battery?

Integrating a solar inverter with a lithium battery can take your renewable energy setup to the next level. This combination allows for better energy storage, improved efficiency, and greater resilience during power outages. LiFePO4 batteries are particularly well-suited for solar applications because of their thermal stability and long cycle life.

How do I install a lithium battery for inverter?



Understanding your inverter type is crucial to avoid potential issues down the line. The first step in installing a lithium battery for inverter with an existing inverter is to assess your current setup. This includes evaluating the condition of your inverter and ensuring it meets the necessary specifications for lithium-ion batteries.

Can a lithium battery be used with a sine wave inverter?

Some examples include pure sine wave and modified sine wave inverters. These inverters may work better with lithium-ion batteries. Understanding your inverter type is crucial to avoid potential issues down the line. The first step in installing a lithium battery for inverter with an existing inverter is to assess your current setup.



Can Taipei lithium battery inverter be used

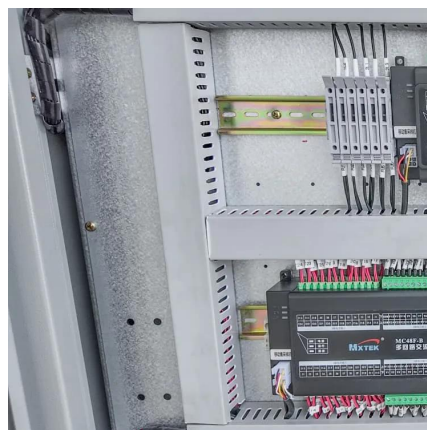


Do Lithium Batteries Need a Special Inverter? , IMPROVE BATTERY

Lithium batteries, including lithium-ion batteries and lithium iron phosphate (LiFePO4) batteries, don't necessarily require a special inverter specifically designed for lithium batteries.

Choosing the Best Inverter Battery

An inverter battery is a crucial part of any power backup solution. The choice of the right battery for your inverter directly influences the performance and ...



[Can You Use a Solar Battery in a Normal Inverter?](#)

Unlock the potential of your solar power system! Learn how to use solar batteries in normal inverters for efficient energy solutions and enhanced ...

Battery Manufacturers in Taiwan

Product types: portable computer batteries, camcorder batteries, cordless power tool batteries, DC to AC power inverters, battery chargers, digital camera battery, portable DVD battery.PDA ...



[Can 2 Inverters Be Used with 1 Battery Bank?](#)

Learn how to safely use two inverters with one battery bank, including benefits, risks, and best practices for an efficient setup.



[Genus 1000 VA Battery with 60 Months Warranty ...](#)

Buy Genus 1000 VA Battery with 60 Months Warranty Pure Sine Wave Inverter for Rs.59999 online. Genus 1000 VA Battery with 60 Months Warranty Pure ...



[Lithium Battery for Inverter: Pros, Specs, and Tips](#)

Can I replace my lead-acid battery with lithium in my inverter system? Yes, but you must ensure your inverter and charger are compatible with lithium charging profiles.





Importance of Compatibility Between Inverter and ...

Inverters that are not designed to work with lithium batteries may overcharge or undercharge the battery, leading to premature degradation. ...



"Can a Lithium Battery Be Used with an Inverter That Doesn't ...

In this video, we discuss whether it's possible to use a lithium battery with an inverter that does not support a Battery Management System (BMS).

Do You Need a Special Inverter for Lithium Batteries?

Selecting the right inverter for your lithium battery system involves thoroughly assessing various technical and practical factors. First and ...



Can 2 Inverters Be Used with 1 Battery Bank?

Yes, you can use two inverters with one battery bank, but there are important considerations to ensure safe and efficient operation. A single battery bank can potentially ...



Compatibility of Lithium-Ion Batteries with Existing Inverters

In summary, installing a lithium-ion battery with an existing inverter is not only feasible but also highly beneficial. From improved efficiency and performance to enhanced energy storage and ...



Is It Safe to Install Inverters and Batteries Inside the House?

Installing inverters and batteries inside the house can be safe, provided that you follow certain guidelines related to ventilation, safety standards, and proper placement.

[Lithium Battery for Inverter: Pros, Specs, and Tips](#)

Can I replace my lead-acid battery with lithium in my inverter system? Yes, but you must ensure your inverter and charger are compatible ...



Battery Compatibility

Victron inverter/chargers, inverters, chargers, solar chargers, and other products work with common lead-based battery technologies such as AGM, Gel, OPzS, OPzV, traction ...



Old Magnum MS2812 and new Lithiums

As some of you may know, I am in the process of upgrading to Battleborn lithiums. I have an older (2017) magnum MS 2812 charger/inverter. For those of you who have Magnum ...

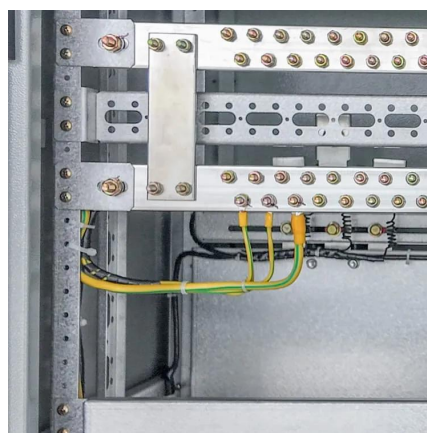


Lithium battery with an unsupported Inverter

LFP is generally safer, more stable, and has more cycle life than li-ion. Two gel batteries could be 12 Volts or 24 volts. A lot depends on how much your inverter can be ...

Importance of Compatibility Between Inverter and Lithium Battery

Inverters that are not designed to work with lithium batteries may overcharge or undercharge the battery, leading to premature degradation. Ensuring compatibility means that ...



Do Lithium Batteries Need a Special Inverter?

Lithium batteries, including lithium-ion batteries and lithium iron phosphate (LiFePO4) batteries, don't necessarily require a special inverter specifically ...





Understanding the Compatibility of LiFePO4 Batteries ...

The type of LiFePO4 battery and the design of the inverter can also impact compatibility. Different battery manufacturers may have specific design ...



[Best Inverters for Lithium Ion Battery \[2023\]](#)

Some features to consider when selecting an inverter for use with lithium-ion batteries include: Most other inverters cannot match the best ...

[Do You Need a Special Inverter for Lithium Batteries?](#)

Selecting the right inverter for your lithium battery system involves thoroughly assessing various technical and practical factors. First and foremost, it is essential to align the ...



Can 2 Inverters Be Used with 1 Battery Bank? Connection and

Yes, you can use two inverters with one battery bank. Make sure the inverters match the battery's voltage configuration. This setup allows for better energy distribution. ...



Can I Connect Inverter to Lithium Battery?

Yes, you can connect an inverter to a lithium battery. Lithium batteries, particularly Lithium Iron Phosphate (LiFePO4) batteries, are well-suited for use with inverters due to their ...



How to Choose the Right Inverter for Lithium Batteries?

Answer: To choose the right inverter for lithium batteries, match the inverter's voltage and capacity to your battery's specifications, prioritize pure sine wave inverters for ...



Battery Choices for Home Power Inverters: What ...

Explore the different types of batteries (lead-acid, lithium-ion, etc.) used with home power inverters. Discuss the pros and cons of each type, their ...



Can all inverters use lithium batteries?

Not all inverters are designed to work with lithium batteries, so it's essential to ensure that your chosen inverter can support this type of battery. The first thing you need to ...



What Size Inverter Can I Run Off a 100Ah Battery? A ...

Understanding Battery and Inverter Basics
Battery Capacity and Inverter Compatibility A
100Ah battery signifies its capacity to deliver
100 ampere-hours of current. This ...



Contact Us

For catalog requests, pricing, or partnerships, please visit:
<https://www.motheopreprimary.co.za>