

# **Can a 36V inverter on a construction site be used with a 48V one**





## Overview

---

What is a good 36 volt inverter?

WZELB makes a 2,000 and 5,000W, 36-volt inverter. It comes with cables, a replacement fuse, and numerous safety features, such as overload, overvoltage, short circuit shutdowns, etc. This inverter is flexible and easy to use, with 2xAC outlets, a digital display, and a terminal block for hard wiring. WZELB makes a very good 36-volt inverter.

How many inverters can be stacked?

Multiple units may be stacked and connected with other OutBack Power electronics for more seamless system integration and the ability to function in a wide variety of applications, and system sizes. Up to nine inverters can be combined in a 3-phase system with the 12V, 24V or 48V models, and up to 36kW in a grid-tied 24V or 48V system.

Can a 48v battery run a 36V motor?

**Overheating and Damage:** The primary risk of using a 48V battery with a 36V motor is overheating. Motors designed for 36V systems are not equipped to handle the increased voltage, which can lead to excessive heat generation. This overheating can cause permanent damage to the motor's windings and bearings, reducing its lifespan significantly.

How many volts should I Run my inverters at?

If it is a mobile setup, 24v is fine. If it's a big Class A coach, 48V. If it is your house, 48v. I have a 24v battery bank and 2x3000w inverters (split phase) but I don't plan to run them at 3000w very often, if ever. Right now I have 2 old BYD batteries on one 100amp BMS. A second 100amp BMS on a 280ah Eve setup (parallel to the inverters).

How many FXR inverters can be combined?

Up to nine inverters can be combined in a 3-phase system with the 12V, 24V



or 48V models, and up to 36kW in a grid-tied 24V or 48V system. The exclusive modular system architecture means that increased power output is just an additional FXR inverter/charger away.

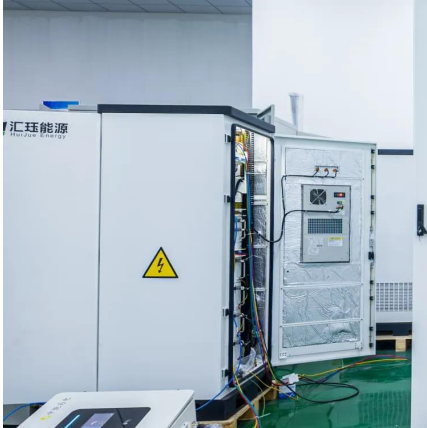
What type of inverter do I Need?

Also, keep in mind. A 24-volt, 36-volt, or 48-volt inverter is a good choice for equipment using over 3,000 watts. You can use regular or flexible connectors to connect the inverter to the battery bank, but remember that the thinner the wire, the higher the resistance.



## Can a 36V inverter on a construction site be used with a 48V one

---



### Considerations when buying and installing an inverter

Basically, an inverter converts 12v/24v/36v/48v DC to 120v or 240v AC. For most of this article we discuss 12v because they are the most ...

### The Best 36 Volt Power Inverters . SolarKnowHow

Purchasing the best 36-volt inverter for your application requires planning. This guide helps narrow down your choices.



### **Matching 36v solar panels to 48v inverter with build in MPPT**

I'd have to say no. This panels don't leave you any room for over voltage situations such as edge of cloud or cold temperatures. You need to run 2 in series to get the voltage high ...

### **Calculate Battery Size For Any Size Inverter (Using Our Calculator)**

So I have made it easy for you, use the calculator below to calculate the battery size for 200 watt, 300 watt, 500 watt, 1000 watt, 2000 watt, 3000 watt, 5000-watt inverter



## The Differences Between 24v and 48v Inverter: Which is Better?

Are you confused about choosing between 24V and 48V inverters? Compare the key differences in efficiency, cost, and battery configuration.



## Can You Put 48V Batteries in a 36V Golf Cart: Compatibility

Upgrading the battery system in a golf cart from 36 volts to 48 volts is an undertaking that can offer increased power and efficiency, making it an attractive option for ...



## The Differences Between 24v and 48v Inverter: Which ...

The correct inverter voltage is essential for system efficiency, safety, and future scalability. In standard off-grid solar systems, RVs, or mobile ...





### Can I connect 4 pcs 12V 100ah LifePO4 batteries in ...

I compared many battery brands and recently the 12V 100ah lifePO4 on gokwh very cost-effective. Can I buy it and combine it into a ...

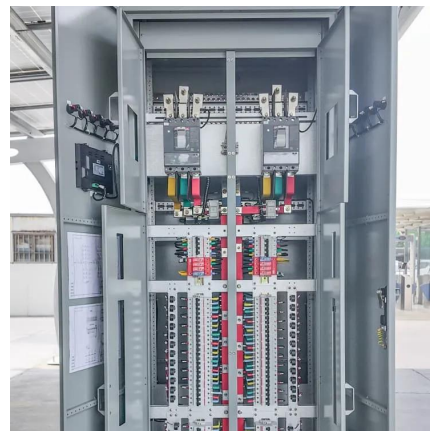


### What Happens If You Put 48V to a 36V Motor?

Overheating and Damage: The primary risk of using a 48V battery with a 36V motor is overheating. Motors designed for 36V systems are not equipped to handle the ...

### **48V vs 24V Advice Needed**

If you are going with inverters 3000 watts or higher than 48V is the way to go because wire sizes become an issue. Going with 48V also means you need to pay more heed ...



### **What can I do for home battery system using 36v batteries?**

Hi all, I have found a reasonable amount of 36v lifepo4 batteries (50ah so 1.7kWh each approx) but when looking for inverter/chargers everything seems to be 12/24/48.



## [The Differences Between 24v and 48v Inverter: Which ...](#)

Are you confused about choosing between 24V and 48V inverters? Compare the key differences in efficiency, cost, and battery configuration.



## [Calculate Battery Size For Any Size Inverter \(Using ...](#)

So I have made it easy for you, use the calculator below to calculate the battery size for 200 watt, 300 watt, 500 watt, 1000 watt, 2000 ...

## [What Happens If You Put 48V to a 36V Motor?](#)

In the realm of electric vehicles, including e-bikes and golf carts, understanding the relationship between voltage and motor compatibility is crucial. When you introduce a 48V ...



## **Matching 36v solar panels to 48v inverter with build in MPPT**

Version:1.0 StartHTML:0000000167

EndHTML:0000007443

StartFragment:0000000457

EndFragment:0000007427 Hi - I have a Axpert MKS 5K inverter. ...



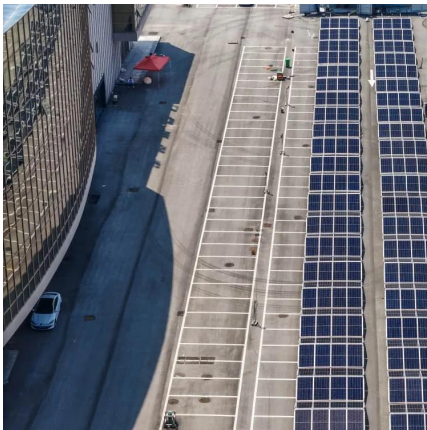
## Will a 36 volt controller handle a 48 volt battery?

if you use a 48V lifepo4 pack then you would wanna use a 36V controller so that the LVC of the controller does not shut it down since the 16S lifepo4 can produce current down ...



## **FXR / VFXR(TM) Series - Outback power**

Up to nine inverters can be combined in a 3-phase system with the 12V, 24V or 48V models, and up to 36kW in a grid-tied 24V or 48V system. The exclusive ...



## **48 volt vs. 36 volt**

48 volt is the right choice. 48 volt inverters are easy to find as it is a common voltage and will be less expensive watt for watt than 36 volt inverters and equipment. 48 volts ...



## Using a 36v battery with a 48v rear hub kit? : r/ebikes

Not work at all, because the controller will think that the 48V battery is "dead" at 36V, which is under the cut-off voltage for a 48V pack. As for the step-up-converter idea, that probably won't ...





## Y& H: 1400 watt Solar Grid Tie Inverter 24/36V Review

2 days ago · ?Battery Power Supply?This DC 22-60V grid tie solar inverter can only be powered by 36V/48V batteries, and when using batteries, please use a circuit breaker, The inverter ...



## **FXR / VFXR(TM) Series - Outback power**

Up to nine inverters can be combined in a 3-phase system with the 12V, 24V or 48V models, and up to 36kW in a grid-tied 24V or 48V system. The exclusive modular system architecture ...

## Can A 36V Golf Cart Motor Run On 48V?

When it comes to golf cart motors, the question of whether a 36V motor can run on a 48V system is a common one. And the answer is yes, it is indeed ...



## How to use a 60v battery pack on 48v motor

Hello everyone :D, I have a 60v battery pack and I wanted to use it on a 48v motor without burning the motor. What options do i have? How can i step it down? will it burn the ...



## Can I Replace a 36V Battery with a 48V Battery? An In-Depth ...

Voltage is a critical factor in determining the performance of any electrical device. A 36V battery and a 48V battery differ primarily in the amount of power they can deliver. The ...

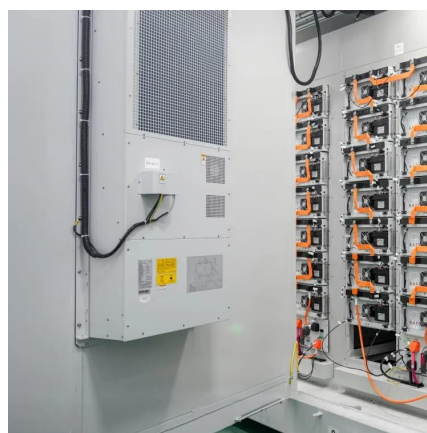


## Can You Convert a 36V Golf Cart to 48V? [The Ultimate Guide]

Learn how to convert a 36V golf cart to 48V with this step-by-step guide. Includes instructions on wiring, batteries, and chargers. 36V to 48V golf cart conversion is a popular way to increase ...

## 240V Solar Inverter

When it comes to the topic of 240v solar inverter, it's all about converting the direct current (DC) power from solar panels to alternating current (AC) power suitable for household use. The ...



## [Considerations when buying and installing an inverter](#)

Basically, an inverter converts 12v/24v/36v/48v DC to 120v or 240v AC. For most of this article we discuss 12v because they are the most common, but please see the chapter at ...



### [Using a 36v battery with a 48v rear hub kit? : r/ebikes](#)

Not work at all, because the controller will think that the 48V battery is "dead" at 36V, which is under the cut-off voltage for a 48V pack. As for the step-up-converter idea, that ...



## Contact Us

---

For catalog requests, pricing, or partnerships, please visit:  
<https://www.motheopreprimary.co.za>