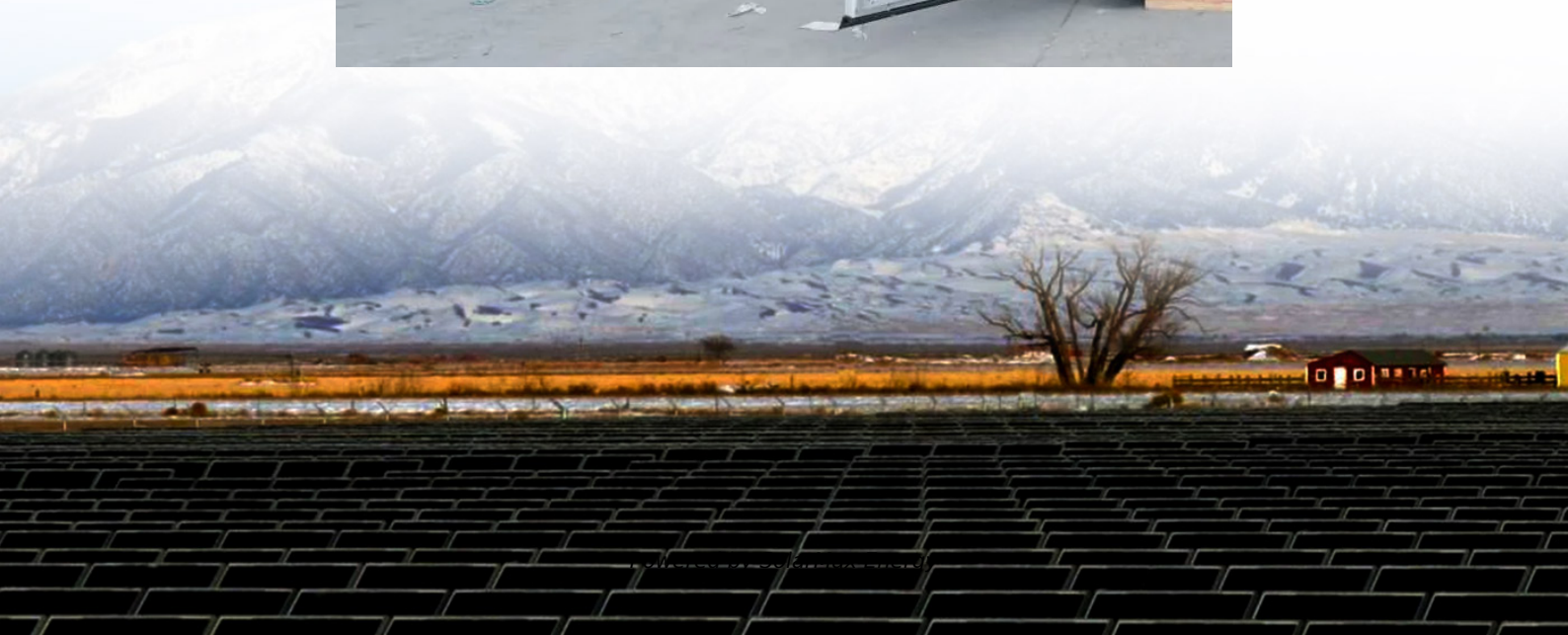


El Salvador lithium battery BMS characteristics





Overview

What is a lithium-ion battery management system (BMS)?

Together, we'll get the most out of your lithium-ion pack. In summary, we believe that a battery management system (BMS) is vital for efficient and safe use of lithium-ion battery packs. It not only extends battery lifespan but also monitors its health.

Do lithium ion batteries need a BMS?

Lithium-iron-based batteries, however, can be damaged if they are charged while being below a certain temperature. So, temperature monitoring is much more common for those types of cells. Lithium-ion batteries do not require a BMS to operate. With that being said, a lithium-ion battery pack should never be used without a BMS.

Do you need a lithium-ion battery management system?

A lithium-ion battery management system is required to monitor the battery state and maintain operational safety because lithium-ion batteries can only be utilized under specific circumstances. Most lithium-ion batteries should not be fast-charged below 5°C and shouldn't be charged at all below 0°C.

Are lithium-ion batteries safe to operate without BMS protection?

A: Operating lithium-ion batteries without proper BMS protection is extremely dangerous and not recommended. While basic protection circuits exist, they lack the comprehensive monitoring and management capabilities needed for safe operation.

What is BMS in battery?

An electronic regulator called a battery management system (BMS) keeps track of and regulates how rechargeable batteries are charged and discharged. The electronics application used in battery management systems could be as basic as measuring voltage and stopping the charging process



when the target voltage is attained.

Does BMS balancing protect Li-ion batteries?

Therefore, it's crucial to confirm that the BMS in your battery pack has sufficient BMS cell balancing protection abilities such as in BMS for li-ion batteries. To get the most from your battery pack, ensure that your BMS is turned on and that this task is completed correctly.



El Salvador lithium battery BMS characteristics



[El Salvador BMS battery management system architecture](#)

With a strong focus on battery characterisation, charge-profiles and battery management systems (BMSs), the authors present results of their own practical research with a detailed literary

FOIIOEVESTWOODS 12V 100Ah LiFePO4 Lithium Rechargeable Battery

Shop FOIIOEVESTWOODS 12V 100Ah LiFePO4 Lithium Rechargeable Battery, Bluetooth Lithium Battery, 4500 Cycles, 1.28kWh, 100A BMS, Low Temp Cut Off, IP65, for RV, Solar, ...



[Battery Management Systems \(BMS\): A Complete Guide](#)

What is a Battery Management System (BMS)? A Battery Management System (BMS) is an electronic system that manages a rechargeable battery by monitoring its state, ...

Buy CHINS 12V 300Ah Lithium LiFePO4 Battery, Built-in 200A BMS...

Power Up Your Adventures! ? The CHINS 12V 300Ah Lithium LiFePO4 Battery is a high-performance energy solution designed for off-



grid living, RVs, and solar applications. With a ...



12V 300Ah Lithium Battery, Built-in 100A BMS, Rechargeable Iron

Shop 12V 300Ah Lithium Battery, Built-in 100A BMS, Rechargeable Iron Phosphate LiFePO4 Deep Cycles Battery Perfect for Replacing Most of Backup Power, Home Energy Storage and ...

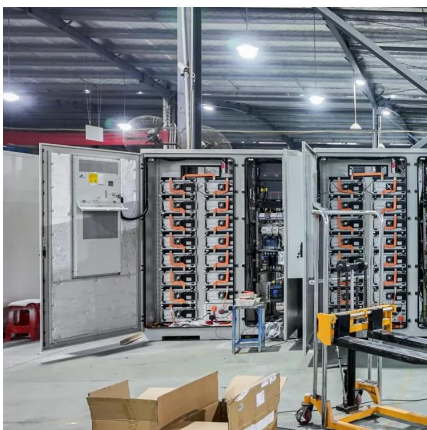
BMS for Lithium-Ion Batteries: The Essential Guide to Battery

Comprehensive guide to BMS for lithium-ion batteries. Learn battery management system functions, safety features, and protection mechanisms in 2025.



Understanding lithium-ion battery management systems in electric

This paper has outlined the key facets of EV technology, starting with an understanding of the various types of EV, how BMS is vital in managing lithium-ion batteries, ...





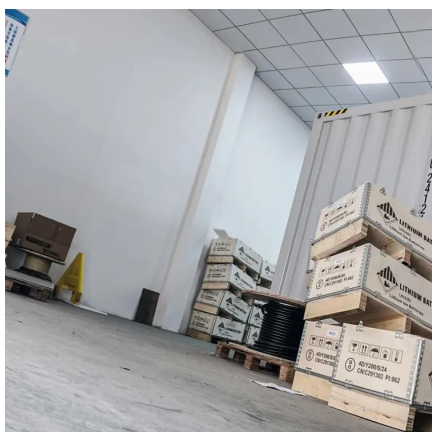
[Battery Management Systems \(BMS\): A Complete Guide](#)

A Battery Management System (BMS) is essential for ensuring the safe and efficient operation of battery-powered systems. From real-time ...



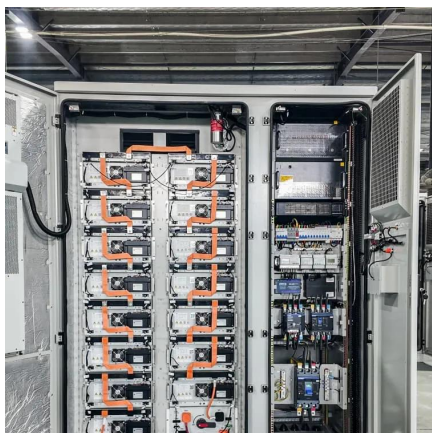
[A Complete Guide to What is BMS for Lithium Ion Battery](#)

Low self-discharge, power density, and low cost are three of lithium-ion batteries' top qualities, which make them one of the best energy storage technologies. ...



24V Lithium Battery

Shop 24V Lithium Battery - 50Ah Lightweight LiFePO4 Deep Cycle Battery, 50A BMS 12 Volt Lithium Batteries for RV, Car, Camper, Off Grid, Golf Cart, Marine, and Trolling Motor online at ...



Buy 72V Ebike Battery 20Ah 25Ah 30Ah 40Ah LiFePO4 Lithium ...

Shop 72V Ebike Battery 20Ah 25Ah 30Ah 40Ah LiFePO4 Lithium Iron Phosphate Electric Bicycle Motorcycle Scooter Battery Pack with 50A BMS and 5A Charger for 3500W-750W Motor Bike ...



YTX12-BS/YTX14-BS 12V 8Ah Lithium Powersports Motorcycle Battery ...

Shop YTX12-BS/YTX14-BS 12V 8Ah Lithium Powersports Motorcycle Battery with Smart BMS, 480A Compatible ATV, UTV, Scooter, Snowmobile, 4 Wheeler, Lawn Mower, and Generator ...

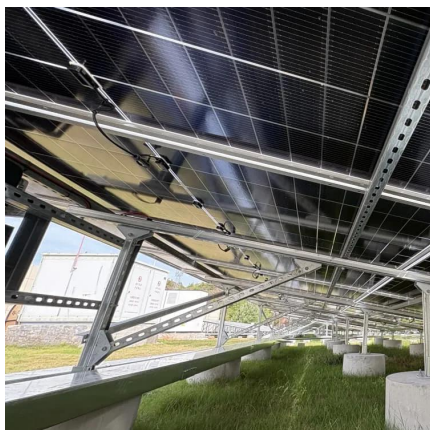


12V 50Ah Lithium Battery 12V LiFePO4 Batteries 640W Load ...

Shop 12V 50Ah Lithium Battery 12V LiFePO4 Batteries 640W Load Power 4000+ Deep Cycle Lithium iron Phosphate Battery Built-in 50A BMS Trolling Motor Batteries for RV, Marine, Golf ...

Decoding BMS: Your Guide to Choosing the Perfect Battery ...

Introduction: Choosing the right Battery Management System (BMS) is crucial for the optimal performance and safety of your lithium-ion battery pack. In this guide, we'll delve into the key ...



[How To Choose A BMS For Lithium Batteries](#)

When choosing a BMS for a lithium-ion battery, the most important aspect to consider is the maximum current rating of the BMS. In ...



Battery Management Systems for Lithium-Ion Packs

A Battery Management System (BMS) is essential for the efficient use and longevity of lithium-ion battery packs. It guarantees safety and performance by monitoring key aspects like charge, ...



Lithium Battery Charging Board 20S 60A PCB Protection Board BMS ...

Shop Lithium Battery Charging Board 20S 60A PCB Protection Board BMS Li-ion Lithium Battery Charging Board, Battery Cell Protection Board online at best prices at desertcart - the best ...

Enjoybot 12v 100ah Lifepo4 Lithium Battery 100a Bms Deep ...

Shop Enjoybot 12v 100ah Lifepo4 Lithium Battery 100a Bms Deep Cycle at best prices at Desertcart El Salvador. FREE Delivery Across El Salvador. EASY Returns & Exchange.



Battery BMS , JustlithiumBattery

Justlithium provides all kinds of lithium and lifepo4 Battery BMS, including active balancing/passive balancing BMS. The required MOS tube voltage can be tailored for different ...



El Salvador Santa Ana Lithium Battery BMS Key Features and ...

Meta Description: Discover the critical characteristics of lithium battery BMS systems in El Salvador's Santa Ana region. Explore technical specs, use cases, and how these systems ...



[Battery Management Systems for Lithium-Ion Packs](#)

A Battery Management System (BMS) is essential for the efficient use and longevity of lithium-ion battery packs. It guarantees safety and performance by ...



4 Pack 12V 100Ah LiFePO4 Battery, 1280Wh Grade A Cells Lithium Battery

Shop 4 Pack 12V 100Ah LiFePO4 Battery, 1280Wh Grade A Cells Lithium Battery with 100A BMS, 5000+ Deep Cycles Battery for RV, Trolling Motor, Solar, Golf Cart, Marine and Off Grid ...



[A Complete Guide to What is BMS for Lithium Ion Battery](#)

Low self-discharge, power density, and low cost are three of lithium-ion batteries' top qualities, which make them one of the best energy storage technologies. Let's take a deeper look at ...





[Supersmart BMS Lithium Battery, 12V 4.5AH, 270CCA](#)

Shop Supersmart BMS Lithium Battery, 12V 4.5AH, 270CCA online at best prices at desertcart - the best international shopping platform in El Salvador. FREE Delivery Across El Salvador. ...



Buy 12V 18Ah Lithium LiFePO4 Deep Cycle Rechargeable Lithium ...

Shop 12V 18Ah Lithium LiFePO4 Deep Cycle Rechargeable Lithium Iron Phosphate Battery Pack, Built-in BMS, 3000+ Cycles, Perfect for Golf Cart, Boat, UPS, Trolling Motor, Power Wheels ...



[How To Choose A BMS For Lithium Batteries](#)

When choosing a BMS for a lithium-ion battery, the most important aspect to consider is the maximum current rating of the BMS. In addition to that, you need to make sure ...



[Which BMS to select for a lithium battery?](#)

Selecting the right BMS (Battery Management System) for a lithium battery will optimise its performance, safety and lifespan.



Battery Management Systems (BMS): A Complete Guide

What is a Battery Management System (BMS)? A Battery Management System (BMS) is an electronic system that manages a ...



Decoding BMS: Your Guide to Choosing the Perfect ...

Introduction: Choosing the right Battery Management System (BMS) is crucial for the optimal performance and safety of your lithium-ion battery pack. In this ...

Contact Us

For catalog requests, pricing, or partnerships, please visit:
<https://www.motheopreprimary.co.za>