

Flywheel Energy Storage Limitations





Overview

What is a flywheel energy storage system?

Flywheel energy storage systems offer a unique and efficient alternative to traditional battery systems, with advantages in speed, lifespan, and environmental impact. While battery storage remains the dominant choice for long-term energy storage, flywheel systems are well-suited for applications requiring rapid energy release and frequent cycling.

What is the difference between a flywheel and a battery storage system?

Flywheel Systems are more suited for applications that require rapid energy bursts, such as power grid stabilization, frequency regulation, and backup power for critical infrastructure. Battery Storage is typically a better choice for long-term energy storage, such as for renewable energy systems (solar or wind) or home energy storage.

Do flywheel energy storage systems need to be embedded in the ground?

Still, many customers of modern flywheel energy-storage systems prefer to have them embedded in the ground to halt any material that might escape the containment vessel. An additional limitation for some flywheel types is energy storage time. Flywheel energy storage systems using mechanical bearings can lose 20% to 50% of their energy in 2 hours.

Are flywheels better than batteries?

Lifespan: Flywheels tend to last much longer than batteries, especially for high-cycle applications. Suitability for Short-Term Energy Needs: Flywheels excel in managing short-term energy surges or imbalances, while batteries are often better for long-term storage. Which Is Better: Flywheel or Battery Energy Storage?

.

What are the limitations of Flywheel design?



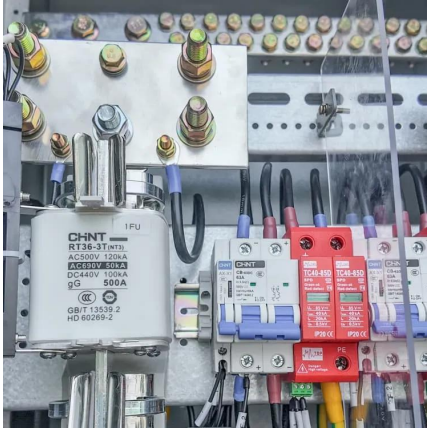
One of the primary limits to flywheel design is the tensile strength of the material used for the rotor. Generally speaking, the stronger the disc, the faster it may be spun, and the more energy the system can store.

How long do flywheels last?

Long Lifespan: With no chemical reactions involved, flywheels can last for tens of thousands of cycles, significantly outperforming batteries in terms of longevity. High Efficiency: Flywheel systems are highly efficient at storing and releasing energy, with minimal energy loss over time.



Flywheel Energy Storage Limitations



Flywheel Energy Storage in Action

Explore real-world examples and case studies of flywheel energy storage in renewable energy systems, and learn from the successes and challenges of implementing this ...

[Learn how flywheel energy storage works , Planète ...](#)

A Long History The concept of flywheel energy storage goes back a long way. In Antiquity, potter's wheels worked using a wooden disc, which ...



[Flywheels - Taking energy storage beyond the ...](#)

Due to their proven reliability and beneficial environmental characteristics, managers of data centers, hospitals, industrial operations, ...

[Advantages and disadvantages of the flywheel.](#)

Flywheel energy storage (FESS) converts electricity into mechanical energy stored in a rotating flywheel. But high self-discharge rate due to friction and heat make FESS unsuitable



for



Flywheel Energy Storage System: What Is It and How Does It ...

While battery storage remains the dominant choice for long-term energy storage, flywheel systems are well-suited for applications requiring rapid energy release and frequent cycling.



Exploring the Drawbacks of Flywheel Energy Storage Systems

Flywheel energy storage systems offer numerous benefits, but they also come with their fair share of disadvantages. While these systems are efficient in certain applications, there are some ...



Disadvantages of Flywheel Energy Storage in context of flywheel energy

Flywheel energy storage (FES) has gained significant attention in recent years as a promising technology for grid-scale energy storage. However, like any other technology, ...





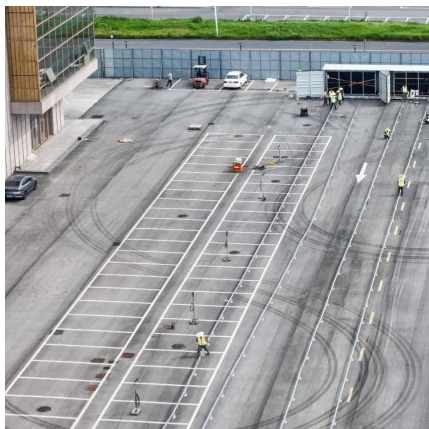
A review of flywheel energy storage systems: state of the art ...

This paper gives a review of the recent Energy storage Flywheel Renewable energy Battery Magnetic bearing developments in FESS technologies. Due to the highly ...



Flywheel Energy Storage System: What Is It and How ...

While battery storage remains the dominant choice for long-term energy storage, flywheel systems are well-suited for applications requiring rapid energy ...



Flywheel energy storage

As discussed in the first chapter of the book, energy storage devices with a mechanical operation basis are typically expected to have a longer life span and the capability ...



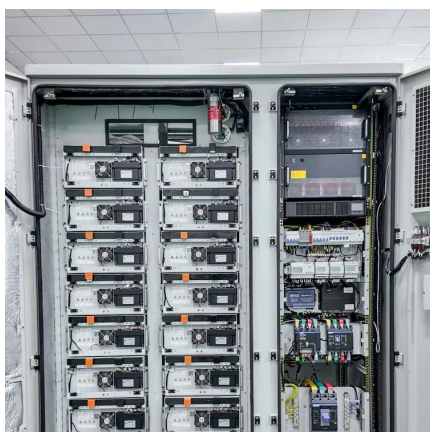
Flywheel energy storage

First-generation flywheel energy-storage systems use a large steel flywheel rotating on mechanical bearings. Newer systems use carbon-fiber composite rotors that have a higher ...



Enhancing vehicular performance with flywheel energy storage ...

Flywheel Energy Storage Systems (FESS) are a pivotal innovation in vehicular technology, offering significant advancements in enhancing performance in vehicular ...



Flywheel energy storage

First-generation flywheel energy-storage systems use a large steel flywheel rotating on mechanical bearings. Newer systems use carbon-fiber composite ...

A Review of Flywheel Energy Storage System Technologies ...

One energy storage technology now arousing great interest is the flywheel energy storage systems (FESS), since this technology can offer many advantages as an energy storage ...



[Flywheel Systems for Utility Scale Energy Storage](#)

Flywheel Systems for Utility Scale Energy Storage is the final report for the Flywheel Energy Storage System project (contract number EPC-15-016) conducted by Amber Kinetics, Inc.



What are the disadvantages of flywheel energy storage?

High initial costs, specific applications, limited energy density, short discharge duration:
Flywheel energy storage systems are characterized by their innovative design for ...



Advantages and disadvantages of the flywheel.

Flywheel energy storage (FESS) converts electricity into mechanical energy stored in a rotating flywheel. But high self-discharge rate due to friction and ...



Overview of Control System Topology of Flywheel ...

The electrical power is applied to the motor causing the flywheel spinning high speed, and this spinning mass has kinetic energy is converted ...



Battery and Flywheel Energy Storage Systems: Principles

Battery Energy Storage Systems (BESS) represent a keystone in modern energy management, leveraging electrochemical reactions to store energy, typically in the form of ...





Flywheel Energy Storage Explained

What are the challenges and limitations of flywheel energy storage? The challenges and limitations of flywheel energy storage include high upfront costs, energy ...



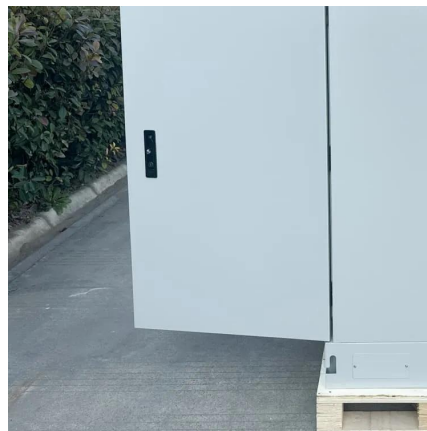
Exploring Flywheel Energy Storage Systems and ...

The discussion surrounding flywheel energy storage systems (FESS) is not complete without addressing the difficulties and limitations these systems ...



What are the disadvantages of flywheel energy storage?

High initial costs, specific applications, limited energy density, short discharge duration: Flywheel energy storage systems are characterized ...



Understanding Flywheel Energy Storage: Does High-Speed ...

Once the relationship between the energy storage and strength limitations of flywheel materials in one dimension has been visualized, it is a simple matter to extend this vision to two ...



Flywheel Energy Storage: Challenges in Microgrids

While flywheel energy storage systems offer several advantages such as high-power density, fast response times, and a long lifespan, they also face challenges in microgrid applications.



Disadvantages of Flywheel Energy Storage in context of flywheel ...

Flywheel energy storage (FES) has gained significant attention in recent years as a promising technology for grid-scale energy storage. However, like any other technology, ...

SUPERFLYWHEEL ENERGY STORAGE SYSTEM David ...

the use of flywheel storage systems has been limited to a very few applications. The principal disadvantages of these devices have been the limited energy storage capability (about one ...



Flywheel Energy Storage Explained

The challenges and limitations of flywheel energy storage include high upfront costs, energy capacity limitations, safety concerns, and material requirements. What are the ...



Flywheel Energy Storage

Flywheels are not as adversely affected by temperature changes, can operate at a much wider temperature range, and are not subject to many of the common failures of chemical ...



Comparison of advantages and disadvantages of various energy storage

Comparison of advantages and disadvantages of various energy storage systems 1, mechanical energy storage Mechanical energy storage mainly includes pumped storage, ...

Contact Us

For catalog requests, pricing, or partnerships, please visit:
<https://www.motheopreprimary.co.za>