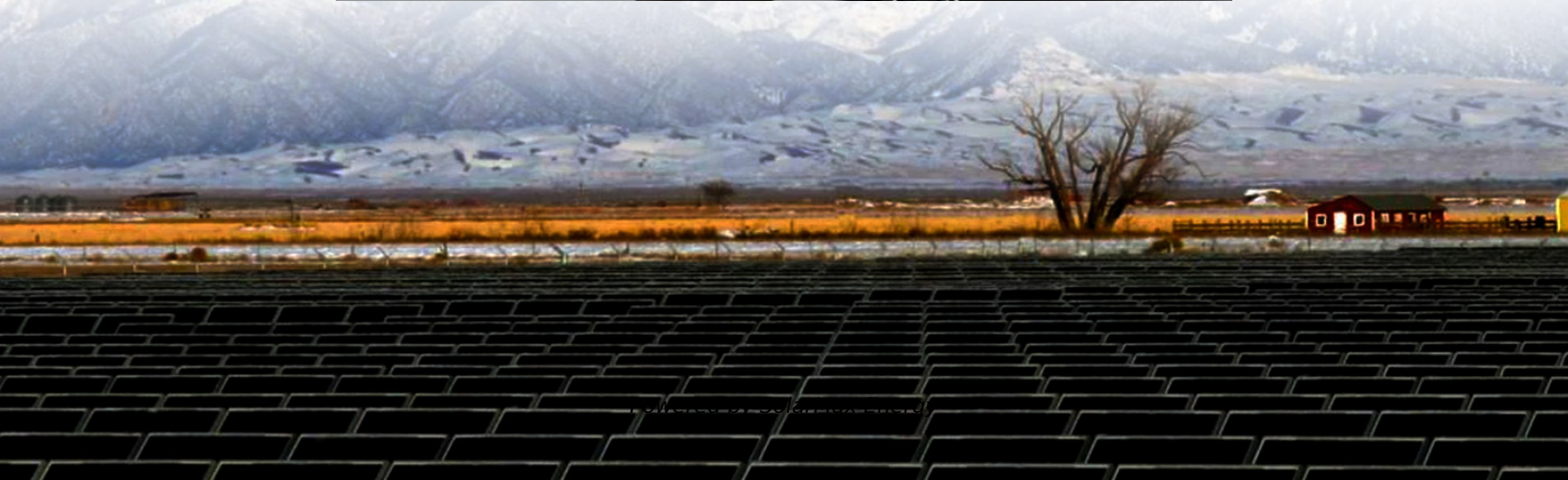


How big a battery inverter should I use for a 5 kW solar panel





Overview

Should your inverter size match your solar panel size?

Match your inverter to your lifestyle, not just your roof. If you're running a fridge, home office, and PS5 all day, size accordingly. If you're barely home, go leaner. Here's the cheat code: your inverter size should usually match your solar panel system's size in kilowatts.

What size solar inverter do I Need?

A 4.5 kW array (or ten 450-watt solar panels) would just about cover your consumption. The type of solar panels you choose can also impact the size of the inverter you need. Different types of solar panels have different wattage ratings and efficiency levels. The three main types of solar panels are monocrystalline, polycrystalline, and thin film.

How much power does a 5 kW inverter use?

If your system pushes 5,000 watts, a 5,000-watt (or 5 kW) inverter is usually the move. But it's not always one-to-one. Some setups undersize the inverter a bit—say, 4.6 kW for 5 kW of panels—to save cash without losing much power. It's a balancing act between cost, performance, and when you actually use electricity.

How to choose a solar inverter?

Choose an inverter that has a surge watt rating equal to or greater than this value. As for voltage drop, check the wire length between your solar panels and the batteries. If the wire length is long, you may need to choose a lower voltage system (12V, 24V, or 48V) to minimize voltage drop.

How many kW inverters do I Need?

Therefore, we typically recommend 5 kW inverters which cater even to the peak demand of most British households. Most inverters charge and discharge at the same rate. However, this is not always the case. For example, the Tesla



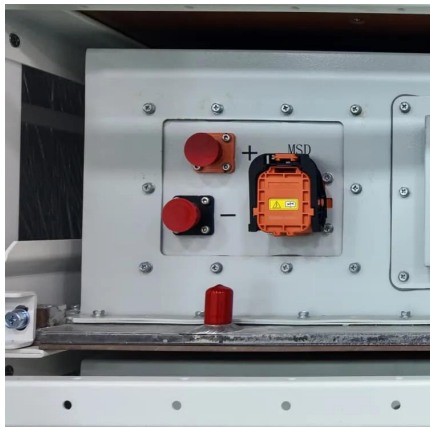
PW3 has a charge capacity of 5 kW and discharge capacity of 11.5 kW.

Does a solar inverter work with a battery?

Most solar systems are designed with a ratio between 1 and 1.25, to maximise efficiency without overloading the inverter. You might have a solar battery to store excess solar production for use during darker hours and import cheaply during the night. In this case, it's important that the inverter will work for both solar panels and battery.



How big a battery inverter should I use for a 5 kW solar panel



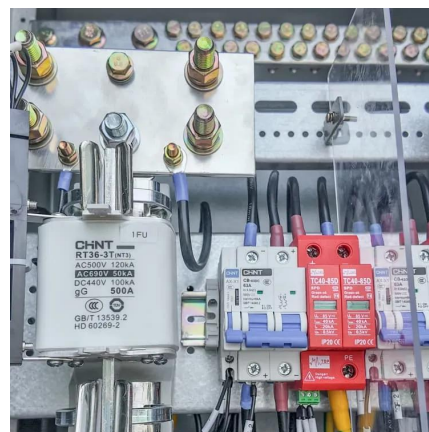
Solar Inverter Sizing Guide for Maximum Efficiency , Mingch

In most cases, the inverter size should be close to the size of your solar panel system, within a 33% ratio. For example, a 6.6kW solar array often pairs with a 5kW inverter to ...



[How to Calculate Fuse Size for Solar System](#)

Fuses, circuit breakers, class-T fuses, In the article, I will show you how to select the right size fuse for your DIY solar system.



[Inverter Size Calculator - self2solar](#)

Generally, the inverter should be sized to match about 80-100% of your system's DC rating. For example, if you have a 5 kW solar array, you might choose a 5 kW inverter. ...

[The Complete Off Grid Solar System Sizing Calculator](#)

Below is a combination of multiple calculators that consider these variables and allow you to size the essential components for your off-grid solar system: The solar array. The ...



[calculate inverter size for solar + Sizing Formula](#)

Inverter Size = Total Solar Panel Output after losses or Desired battery output if there is any If you consume 10 kWh, approximately, every day, then you will need an inverter ...



[How To Size A Solar Inverter in 3 Easy Steps](#)

In this guide, we share 3 easy steps on how to size a solar inverter correctly. We explain the key concepts that determine solar inverter sizing including your ...



[What Size Inverter Do I Need for My Solar Panel ...](#)

The inverter wattage you need should be adjusted according to the expected efficiency of your solar panel system, taking into account your ...





Choosing the Right Size Inverter for Your Solar Installation-----What ...

When selecting off-grid solar inverters, it is essential that the output power of the inverter is large enough to support the loads of the system. Many off-grid solar inverters include a charger in ...



[Solar Battery Size Guide: kWh, Inverter & Runtime](#)

2 days ago · Size your solar battery using load profile, critical loads, efficiency and DoD. Calculator matches kWh, inverter and runtime for code-compliant installs.

[How To Size an Inverter: Solar Inverter Sizing Explained](#)

Optimize your inverter size for maximum efficiency and safety - find out how to size it correctly to avoid potential issues.



[5kW Solar System: Price, Load Capacity, How Big, ...](#)

The number of batteries required for a 5kWh solar panel system depends on the battery type and its capacity. If using the recommended ...



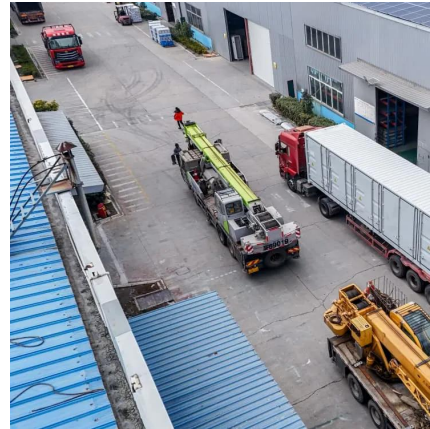
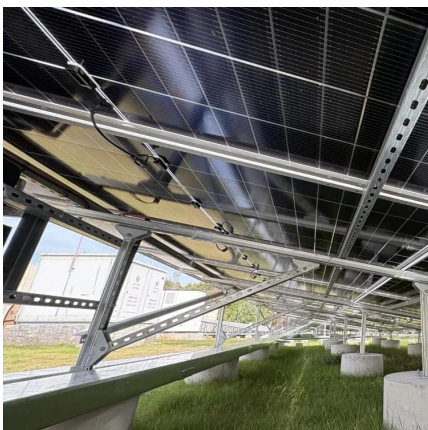
What Size Solar Inverter Do I Need? Experts Break It Down

Here's the cheat code: your inverter size should match your solar panel output. If your system pushes 5,000 watts, a 5,000-watt (or 5 kW) inverter is usually the move.



[Inverter Size Calculator - self2solar](#)

Generally, the inverter should be sized to match about 80-100% of your system's DC rating. For example, if you have a 5 kW solar array, you ...



[What size solar battery do I need? \[UK, 2025\]](#)

What does 'solar battery size' actually mean? A solar battery's size is measured in kilowatt-hours (kWh), as it stores energy. For example, if your ...



[How To Size A Solar Inverter in 3 Easy Steps](#)

In this guide, we share 3 easy steps on how to size a solar inverter correctly. We explain the key concepts that determine solar inverter sizing including your power needs, the type and number ...



How to Right-Size Solar Inverters for Peak Efficiency Gains

Stop guessing. Solar inverter sizing for peak efficiency and lower costs. See ILR targets, partial-load curves, and hybrid storage tactics for real gains.



[5kW vs. 10kW Solar System: Which one is right for you?](#)

Struggling to choose between a 5kW or 10kW solar inverter? This guide compares system sizing, cost, efficiency, energy output, roof space, payback periods, and battery ...

How to Calculate Solar Panel, Battery, and Inverter Size

In general, your inverter capacity should be approximately the same size as the total wattage of your solar panels. This ensures that the inverter operates at ...



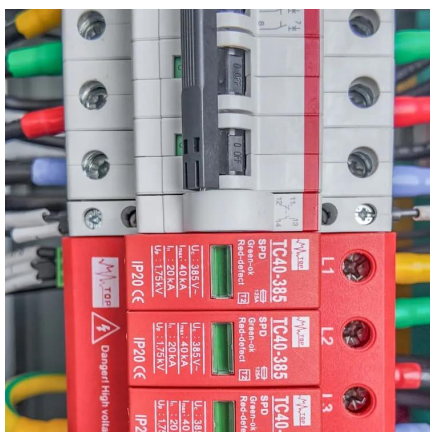
Solar Battery Size Calculator: What size battery do I ...

What size solar panel array do you need for your home? And if you're considering battery storage, what solar battery size would be most ...



How Many Solar Batteries Are Needed to Power a ...

To achieve 13 kWh of storage, you could use anywhere from 1-5 batteries, depending on the brand and model. So, the exact number of ...



Size your solar system

Inverter sizing In many systems, the inverter is sized to be smaller than the panel output. For example, a 6.6 kW solar system is often paired with a 5 kW inverter. Because the panels are ...

The Complete Off Grid Solar System Sizing Calculator

Below is a combination of multiple calculators that consider these variables and allow you to size the essential components for your off-grid solar ...



How to Size Batteries for Solar Panel Installations

Avoid underpowered solar batteries and wasted money. From daily energy use to depth of discharge, this guide explains how to size a battery for ...



Solar inverter size: Calculate the right size for your ...

Most UK homes need at least a 5 kW inverter. While 3.68 kW is common, larger homes or those with batteries benefit from a 5 kW+ system.



How to Calculate Solar Panel, Battery, and Inverter Size

In general, your inverter capacity should be approximately the same size as the total wattage of your solar panels. This ensures that the inverter operates at its most efficient point, which is ...

How to Choose the Right Size Solar Inverter: Step-by-Step with ...

This guide walks you through calculating inverter size based on panel capacity, power usage, and safety margins. We use real examples from installations in Texas and ...



[A Guide to Solar Inverters: How They Work & How to ...](#)

Learn what a solar inverter is, how it works, how different types stack up, and how to choose which kind of inverter for your solar project.



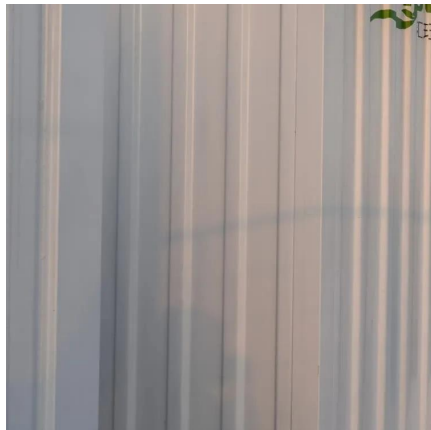
Solar inverter size: Calculate the right size for your inverter

Most UK homes need at least a 5 kW inverter. While 3.68 kW is common, larger homes or those with batteries benefit from a 5 kW+ system.



[Solar Inverter Sizing Guide for Maximum Efficiency](#)

In most cases, the inverter size should be close to the size of your solar panel system, within a 33% ratio. For example, a 6.6kW solar array often ...



[Solar panel inverters & costs: the expert guide \[UK, ...](#)

Solar panel inverters should be installed one to two metres away from your storage battery. Both inverters and batteries should ideally be ...



Solar Battery Size Calculator: What size battery do I need?

What size solar panel array do you need for your home? And if you're considering battery storage, what solar battery size would be most appropriate? This article includes tables ...



Contact Us

For catalog requests, pricing, or partnerships, please visit:
<https://www.motheopreprimary.co.za>