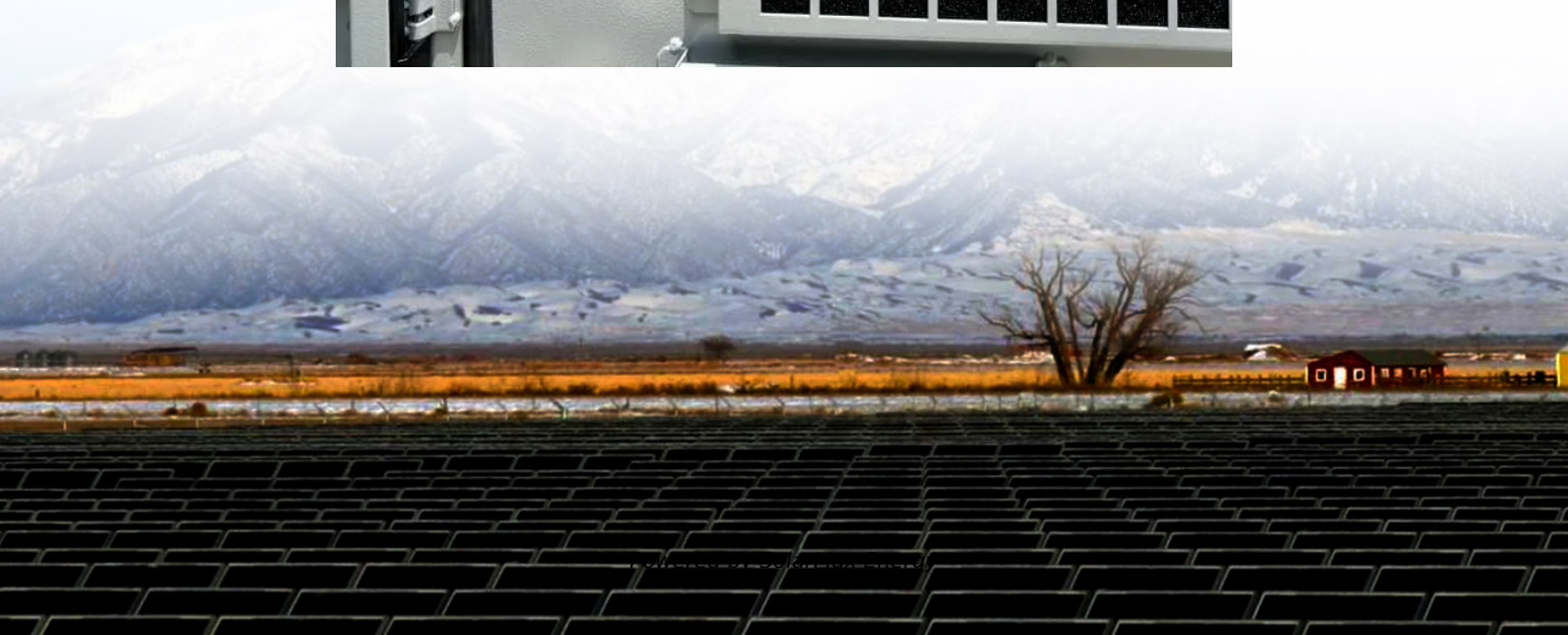


How big is 60 photovoltaic panels





Overview

When considering residential solar panels, typical configurations consist of 60 cells measuring approximately 3.25 feet by 5.5 feet. These panels cover an area of 17.62 square feet and weigh around 40 pounds, excluding the weight of frames and mounting equipment. How big is a 60 cell solar panel?

In comparison, 72-cell panels are a bit larger, at about 80 inches by 40 inches. Many people want to know the physical size of solar panels, not just how many cells they hold. The average 60-cell solar panel is about 65 inches by 39 inches, or 5.4 feet by 3.25 feet, and weighs around 40 to 50 pounds.

What are the different sizes of solar panels?

There are 3 standardized sizes of solar panels, namely: 60-cell solar panels size. The dimensions of 60-cell solar panels are as follows: 66 inches long, and 39 inches wide. That's basically a 66×39 solar panel. But what is the wattage?

That is unfortunately not listed at all. 72-cell solar panel size.

What size solar panel do I Need?

Refer to the solar panel size chart below for a comparison of average residential and commercial solar panel dimensions. The average U.S. residential utility customer uses 893 kWh per month. To completely offset this usage, the average American would need a 6.7 kW solar panel system. Most solar panels have an output rating between 250 W and 400 W.

How much do portable solar panels weigh?

Portable solar panels weigh from 10 to 30 lbs. The 5 watt panels are the lightest at 2 to 5 lbs. These lightweight solar panels are used to charge mobile phones and other devices. A single person can lift portable solar panels without any problems.

What is the difference between a 60-cell and 72-cell solar panel?



You'll typically find that 60-cell solar panels have output ratings between 350 and 400 watts and efficiency ratings between 17% and 19%. 72-cell panels, on the other hand, are usually arranged in a 6-cell by 12-cell grid.

How many people can carry a 60 cell solar panel?

One person can manage a 60-cell panel, but it's generally safer to enlist two people to carry 72-cell panels because they are over 6 feet tall. They can easily sway and cause you to lose balance, especially in windy conditions, so we advise everyone to err on the side of caution.



How big is 60 photovoltaic panels



[Solar Panel Dimensions and Sizes: Complete Guide](#)

The standard solar panel size, the 60-cell is structured as a 6×10 grid and measures 3.25 feet by 5.5 feet.

[Solar Panel Size Guide \(with 4 Charts\)](#)

Regular solar panels come in 60 cell panels or 72 cell panels. Each cell is 6 x 6 inches square. 72 cell panels are taller by 12 inches. The average solar panel is 5.4 x 3.25 feet or 65 inches b 39 ...



[Solar Panel Size & Weight Guide \[+ Charts\] - Solartap](#)

In this guide, we'll unpack solar panel size in greater detail, helping you determine how large of a system your property can accommodate before you purchase your panels.

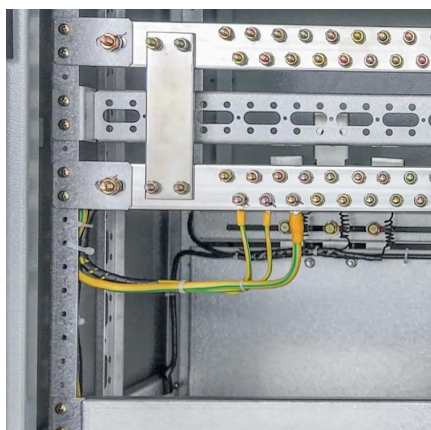
[Solar Panel Size and Weight: How Big Are Solar Panels?](#)

Residential solar panels consist of around 60 solar cells and are roughly 5.5 feet long and 3 feet wide. Solar panels usually weigh about 40 to 50 pounds. Commercial solar panels ...



Complete Guide to Solar Panel Size

When considering residential solar panels, typical configurations consist of 60 cells measuring approximately 3.25 feet by 5.5 feet. These ...



[Solar Panel Dimensions and Weight: A Complete ...](#)

Most homes use 60-cell panels that are roughly 65-by-39 inches. Depending on the brand you buy, you'll find a couple of inches of variation on ...



[Solar Panel Wire Size \(Cable Gauge + Calculations ...](#)

They have standardized 10 AWG PV-rated wires for connecting solar panel arrays. The 10 AWG solar cables are widely accepted as ...





[How to Size a Solar System \[Step-by-Step Guide\]](#)

Once you have your final array size, simply divide by the wattage of your desired solar panels to figure out how many panels you need. Using our example of a ...



[How Big Are Residential Solar Panels?](#)

How Many Solar Panels Do You Need For Your Home? A standard 2,000 square-foot home can typically be powered with a 6 kW solar power system, which is approximately 20, standard 60 ...

How big is 60 photovoltaic panels

How many Watts Does a 60 cell solar panel produce? Sixty-cell solar panels most commonly produce 270 to 300 wattsof energy. Seventy-two-cell solar panels measure 80 inches long by ...



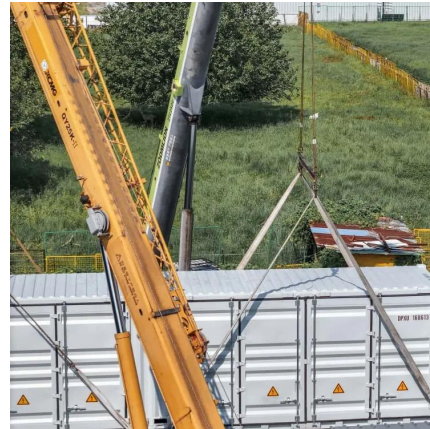
[Solar Panel Size and Weight: How Big Are Solar Panels?](#)

Residential solar panels consist of around 60 solar cells and are roughly 5.5 feet long and 3 feet wide. Solar panels usually weigh about 40 to ...



[Solar Panel Size Guide: How Big Is A Solar Panel?](#)

Standard solar panels come in two common configurations: 60-cell and 72-cell. An individual solar cell is a 6" x 6" square. 60-cell panels are laid out in a 6x10 grid. 72-cell panels ...



Solar Panel Dimensions and Weight: A Complete Guide , Angi

Most homes use 60-cell panels that are roughly 65-by-39 inches. Depending on the brand you buy, you'll find a couple of inches of variation on either dimension. For 60-cell ...

[How to Size a Solar System \[Step-by-Step Guide\]](#)

Once you have your final array size, simply divide by the wattage of your desired solar panels to figure out how many panels you need. Using our example of a 7.2 kW (7,200-watt) array for ...



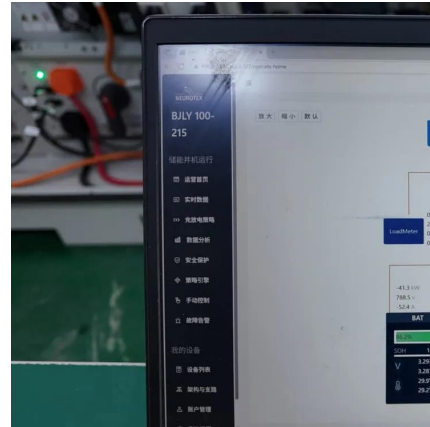
[Solar Panel Size & Weight Guide \[+ Charts\] - Solartap](#)

In this guide, we'll unpack solar panel size in greater detail, helping you determine how large of a system your property can accommodate before ...



Complete Guide to Solar Panel Size

60-cell panels are generally around 65 inches x 39 inches. In comparison, 72-cell panels are a bit larger, at about 80 inches by 40 inches. Many people want to know the physical size of solar ...



[59 Solar PV Power Calculations With Examples Provided](#)

Learn the 59 essential solar calculations and examples for PV design, from system sizing to performance analysis. Empower your solar planning or ...

[Standard Solar Panel Sizes And Wattages \(100W ...](#)

As we can see, those 60-cell, 72-cell, and 96-cell solar panel dimensions are a bit theoretical. These are the practical solar panel dimensions by wattage from ...



[Solar Panel Size Guide: Find The Right Fit For Your ...](#)

Explore solar panel sizes for residential, commercial, and utility projects. Get insights on dimensions, weight, and tips to estimate your ...



Solar Panel Output Voltage: How Many Volts Do PV ...

Maximum Power Voltage (V_{mp}). The is the voltage when the solar panel produces its maximum power output; we have the maximum power voltage ...



Solar Panel Sizes & Dimensions UK (2025)

Are you wondering what solar panel sizes UK, dimensions, and output are right system for your roof and energy needs? Read on to find out.

Solar Panel Size Guide: How Big Is A Solar Panel?

Standard solar panels come in two common configurations: 60-cell and 72-cell. An individual solar cell is a 6" x 6" square. 60-cell panels are laid ...



How Big Is a Single Solar Panel?

Learn about the typical dimensions of a single solar panel and how its size can impact energy production and installation. When considering the installation of solar panels, ...



Solar Panel Size and Weight: How Big Are Solar Panels?

Solar panel size varies from brand to brand, but you can expect your residential panels to measure around 5.5 feet by 3 feet and weigh about 40 to ...

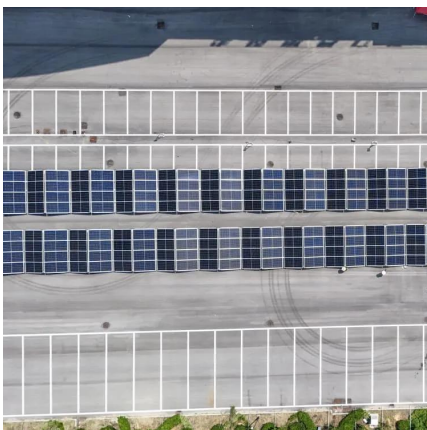


Solar Cell Size: The Ultimate Guide to Choosing the ...

How Big Are Standard Sized Solar Panels?
Residential and Commercial Solar Panel Sizes
Solar panel sizes vary greatly depending on ...

Solar Panel Size And Weight: A Comprehensive Guide

When considering residential solar panels, typical configurations consist of 60 cells measuring approximately 3.25 feet by 5.5 feet. These panels cover an area of 17.62 square ...



Solar Panel Sizes and Weights

A typical solar panel size is about 1 metre wide and can be 1.6 m to 2 m long, while the thickness usually ranges between 3 to 4 cm. Typical ...



Solar Panel Sizes And Wattage , Sizing, Dimensions & Weight

The size or dimensions of the solar panels, measured in height by width, will determine the number of solar panels that will fit on your roof and the wattage of solar panels ...

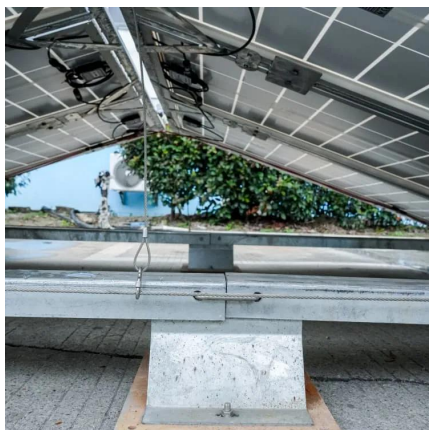
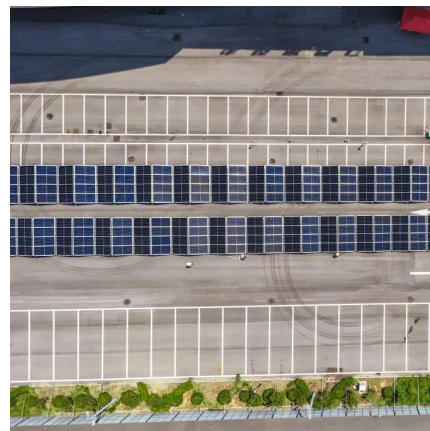


[Solar Panel Dimensions and Sizes: Complete Guide](#)

The standard solar panel size, the 60-cell is structured as a 6×10 grid and measures 3.25 feet by 5.5 feet.

[How Many kWh Does A Solar Panel Produce Per Day?](#)

If we know both the solar panel size and peak sun hours at our location, we can calculate how many kilowatts does a solar panel produce per day using this equation: Daily kWh Production ...



[Standard Solar Panel Sizes And Wattages \(100W-500W ...\)](#)

As we can see, those 60-cell, 72-cell, and 96-cell solar panel dimensions are a bit theoretical. These are the practical solar panel dimensions by wattage from solar panels that are actually ...



Contact Us

For catalog requests, pricing, or partnerships, please visit:
<https://www.motheopreprimary.co.za>