

How does a base station achieve communication





Overview

What is the role of a base station in wireless communication?

Base stations are critical components in wireless communication networks, serving as the intermediary between mobile devices and the core network. They play a vital role in ensuring seamless connectivity, efficient data transmission, and reliable communication services.

Why are base stations important?

Base stations are the backbone of wireless communication networks, playing a pivotal role in signal transmission, network reliability, and high-speed data connectivity. As technology evolves, the importance of base stations will continue to grow, addressing new challenges and supporting the ever-expanding demand for wireless communication services.

How do base stations work?

Base stations use antennas mounted on cell towers to send and receive radio signals to and from mobile devices within their coverage area. This communication enables users to make voice calls, send texts, and access data services, connecting them to the wider world. Network Management and Optimization.

Why are base stations important in cellular communication?

Base stations are important in the cellular communication as it facilitate seamless communication between mobile devices and the network communication. The demand for efficient data transmission are increased as we are advancing towards new technologies such as 5G and other data intensive applications.

What is a base station in radio communications?

In radio communications, a base station is a wireless communications station installed at a fixed location and used to communicate as part of one of the



following: a wireless telephone system such as cellular CDMA or GSM cell site. Base stations use RF power amplifiers (radio-frequency power amplifiers) to transmit and receive signals.

What is a base station in a cellular network?

A base station, also known as a cell site or cell tower, is an integral part of a cellular network. It serves as a central hub for communication between mobile devices and the network infrastructure. Here is a simplified explanation of how a base station works: 1.



How does a base station achieve communication

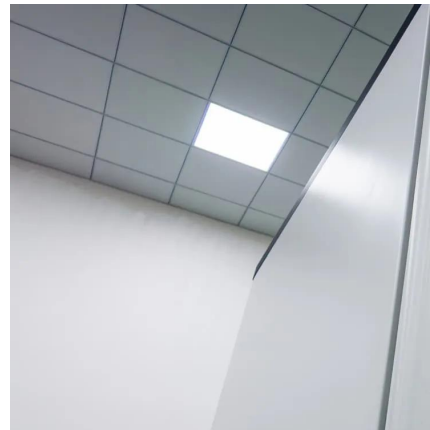


[How does a ground station for space communication ...](#)

Ground station for space communication is a crucial component of ground segment, serving to complement and support space missions.

Base Stations

Base stations form a key part of modern wireless communication networks because they offer some crucial advantages, such as wide coverage, continuous communications and ...



[The Cellular Concept-- System Design Fundamentals](#)

Each cellular base station is allocated a group of radio channels to be used within a small geographic area called a cell. Base stations in adjacent cells are assigned channel groups ...



[What Are Base Station Antennas? Complete Guide](#)

In modern telecommunications systems, the base station antenna stands out as an undeniable and crucial component to facilitate our daily communication from voice calls to ...



What is a Base Station?

The electromagnetic waves emitted by base stations and mobile phones are like air, filling us all around. Everyone knows mobile phones, ...



What Is the Role of a Base Station in Wireless Communication?

Base stations are critical components in wireless communication networks, serving as the intermediary between mobile devices and the core network. They play a vital role in ...



The Base Station in Wireless Communications: The ...

Equipped with an electromagnetic wave antenna, often placed on a tall mast, the base station enables communication between mobile terminals ...





What Is a Base Station and Its Role in Enhancing ...

When we talk about a base station, we're diving into the heart of communication technology. It's essentially a fixed point of communication within a network ...



Base Stations and Cell Towers: The Pillars of Mobile Connectivity

Base stations use antennas mounted on cell towers to send and receive radio signals to and from mobile devices within their coverage area. This communication enables ...



DGNSS Series-Base and Rover

Base and Rover stations form the backbone of GNSS technology, enabling high-precision positioning in various fields. As technology continues ...



What Does a Base Station Do and Why Is It Essential for ...

A base station is a fixed point of communication between mobile devices and the wider telecom network. It transmits and receives radio signals, enabling your phone to access ...



Choosing the Optimal Channels for Base Stations: A ...

In the world of wireless communication, the choice of channels for base stations plays a critical role in ensuring reliable service, minimizing interference, and optimizing ...

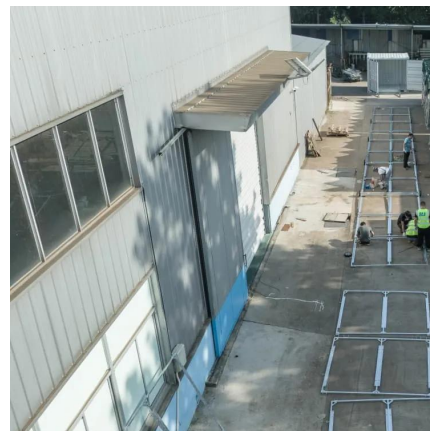


BS (Base Station)

When a wireless device, such as a mobile phone, communicates with a base station, the device sends a signal to the base station, which converts the signal into digital ...

BS (Base Station)

When a wireless device, such as a mobile phone, communicates with a base station, the device sends a signal to the base station, which ...



What Is A Base Station?

A base station is an integral component of wireless communication networks, serving as a central point that manages the transmission and reception of signals between ...



Base Stations and Cell Towers: The Pillars of Mobile ...

Base stations use antennas mounted on cell towers to send and receive radio signals to and from mobile devices within their coverage area.
...



The Base Station in Wireless Communications: The Key to ...

Equipped with an electromagnetic wave antenna, often placed on a tall mast, the base station enables communication between mobile terminals (such as mobile phones or ...



Base Station Antenna Types: A Comprehensive Guide

Learn about the different types of base station antennas, their features, applications, and advantages. This guide will help you choose the best antenna for your wireless network.



How do communication base stations work

Communication base stations, also known as cell towers or mobile phone masts, are essential components of wireless communication networks. They allow mobile devices to connect with ...



Test and Measurement

The goal of Base Station Transmits is to discuss challenges faced by engineers and technicians who must optimize today's wireless networks. ...

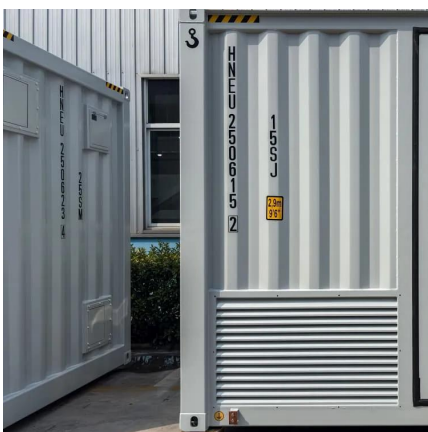


[The Base Station in Wireless Communications: The ...](#)

Base station, also known as BTS (Base Transceiver Station), is a key device in wireless communication systems such as GSM. Equipped with ...

[What Is Base Station In Mobile Communication?](#)

At the heart of this system lies the base station, a crucial component that enables seamless communication between mobile devices and the network. In this blog post, we will ...



[What Are Base Station Antennas? Complete Guide](#)

In modern telecommunications systems, the base station antenna stands out as an undeniable and crucial component to facilitate our daily ...



EMF

A base station is made up of antennas connected by cable to electronic (radio) equipment usually housed in a room or 'shelter'. Some base stations have ...



Contact Us

For catalog requests, pricing, or partnerships, please visit:
<https://www.motheopreprimary.co.za>