

# **How long is a communication base station battery pack**





## Overview

---

What makes a telecom battery pack compatible with a base station?

Compatibility and Installation Voltage Compatibility: 48V is the standard voltage for telecom base stations, so the battery pack's output voltage must align with base station equipment requirements. Modular Design: A modular structure simplifies installation, maintenance, and scalability.

Which battery is best for telecom base station backup power?

Among various battery technologies, Lithium Iron Phosphate (LiFePO<sub>4</sub>) batteries stand out as the ideal choice for telecom base station backup power due to their high safety, long lifespan, and excellent thermal stability.

What is a telecom battery?

Telecom batteries play a crucial role in powering equipment, supporting backup systems, and facilitating smooth operations. This comprehensive guide will delve into the types of telecom batteries, their applications, maintenance tips, and the latest advancements in battery technology. 1. Understanding Telecom Batteries 2.

How do you protect a telecom base station?

Backup power systems in telecom base stations often operate for extended periods, making thermal management critical. Key suggestions include: Cooling System: Install fans or heat sinks inside the battery pack to ensure efficient heat dissipation.

Why do data centers use Telecom batteries?

In data centers, telecom batteries provide backup power to servers and networking equipment. They ensure data integrity and availability during power outages. Cellular networks rely on telecom batteries to maintain service continuity.



How long does a LiFePO<sub>4</sub> battery last?

This is crucial for telecom base stations that require continuous operation. Long Cycle Life LiFePO<sub>4</sub> batteries can achieve over 2,000 cycles, and in some cases up to 5,000 cycles, far surpassing the 300-500 cycles of lead-acid batteries. This translates to lower replacement frequency and maintenance costs.



## How long is a communication base station battery pack

---



### **Communication Base Station Battery 48V 30AH Portable Li Ion Battery Pack**

High quality Communication Base Station Battery 48V 30AH Portable Li Ion Battery Pack factory from China, China's leading Communication Base Station Battery 48V 30AH Portable Li Ion ...

### **Telecom Base Station Backup Power Solution: Design Guide for ...**

Discover the 48V 100Ah LiFePO4 battery pack for telecom base stations: safe, long-lasting, and eco-friendly. Optimize reliability with our design guide.



### [Communication Base Station Backup Battery](#)

ECE 51.2V lithium base station battery is used together with the most reliable lifepo4 battery cabinet, with long span life (4000+) and stable performance. The telecom backup batteries ...

### [CTECHI 5G Telecom Base Station Battery 48V 50Ah ...](#)

CTECHI rack-mounted lithium-ion battery is used together with the most reliable lithium iron phosphate lithium battery, with long life (3000+) and stable ...



### The 200Ah Communication Base Station Backup ...

GEM Battery GF series communication base station lead-acid batteries are used for telecom communication backup power supply, support multi-channel ...



### Battery for Communication Base Stations Market

The global Battery for Communication Base Stations market size is projected to witness significant growth, with an estimated value of USD 10.5 billion in 2023 and a projected ...



### Technical Specifications for Ring Alarm Devices

Z-Wave range Ring uses Z-Wave technology to securely send signals between devices around your home and the Base Station. The range for Z-Wave communication is up to 250 feet ...







## Understanding Backup Battery Requirements for Telecom Base Stations

Telecom base stations require reliable backup power to ensure uninterrupted communication services. Selecting the right backup battery is crucial for network stability and ...



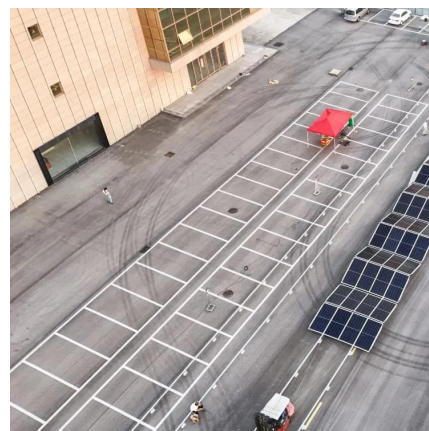
### Communication Base Station Backup Power LiFePO4 Supplier

6.1 How long do telecom batteries last? The lifespan varies by type; lead-acid batteries typically last 3-5 years, while lithium-ion can last 10 years or more with proper ...



### Communication base station energy storage battery system

What is the traditional configuration method of a base station battery? The traditional configuration method of a base station battery comprehensively considers the importance of the 5G base ...



### [Understanding Backup Battery Requirements for ...](#)

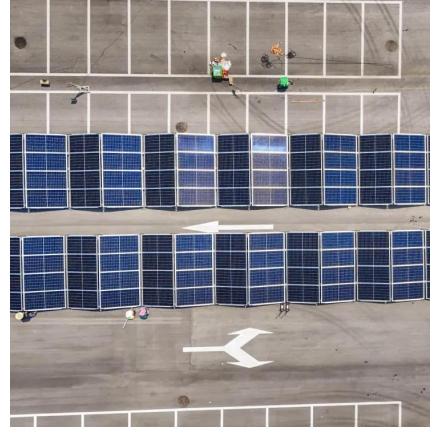
Telecom base stations require reliable backup power to ensure uninterrupted communication services. Selecting the right backup battery is ...





## Amazon : Retevis RA86 GMRS Mobile Radio with Antenna, ...

About this item GMRS Communication kit; contains a RA86 GMRS mobile radio with antenna; an RT97 high-power GMRS base station; and two RB17P handheld GMRS two way radios; Meet ...



## 48V 100Ah LiFePO4 Battery Pack Module 5G Telecom Base Station ...

Long cycle life: Using high-quality LiFePO4 batteries, charge and discharge at 1C at normal temperature, the capacity of the monomer after 6000 cycles is still greater than 80%.

## What Are the Critical Aspects of Telecom Base Station Backup ...

Cycle life indicates how many charge-discharge cycles a battery can endure before capacity significantly degrades. Telecom backup batteries typically require thousands of cycles ...



## [Communication Base Station Battery 48V 30AH ...](#)

High quality Communication Base Station Battery 48V 30AH Portable Li Ion Battery Pack from China, China's leading Communication Base Station ...



### Mobile Base Station Lead-Acid Battery Maintenance

The 200Ah communication base station backup power lead-acid battery In the information age, especially the arrival of the 5G era, communication base stations are particularly important.



### Top Echo Dot Battery Base Options for Every Generation

Here are the top two battery base options to make this little device even more versatile. Blanou Echo Dot 3 Battery Base Features: Sleek design, easy to ...

### Communication Base Station Backup Battery: eceenergy

ECE 51.2V lithium base station battery is used together with the most reliable lifepo4 battery cabinet, with long span life (4000+) and stable performance. The telecom ...



### Communication Base Station Backup Battery

High-capacity energy storage solutions, specifically designed for communication base stations and weather stations, with strong weather resistance to ensure continuous operation of ...





## [Telecom Base Station Backup Power Solution: Design ...](#)

Discover the 48V 100Ah LiFePO4 battery pack for telecom base stations: safe, long-lasting, and eco-friendly. Optimize reliability with our ...



## [CTECHI 5G Telecom Base Station Battery 48V 50Ah Power](#)

CTECHI rack-mounted lithium-ion battery is used together with the most reliable lithium iron phosphate lithium battery, with long life (3000+) and stable performance.

## **4U 48V 150Ah Solar Energy Storage Telecom Base Station 48V ...**

The 4U 48V 150Ah LiFePO4 Battery Pack is a powerful and dependable energy storage solution for a variety of applications. High Capacity (150Ah): Store more solar energy or provide ...



## **Communication Base Station Battery 48V 30AH Portable Li Ion Battery Pack**

China Communication Base Station Battery 48V 30AH Portable Li Ion Battery Pack, Find details about China LiFePO4 Lithium Battery from Communication Base Station Battery 48V 30AH ...



## Enhancing Stability in Communication Base Stations with EVE ...

These stations require a dependable and stable power source to maintain uninterrupted operations. EVE 48100, an exceptional battery pack developed by EVE, offers a ...



## [Comprehensive Guide to Telecom Batteries](#)

6.1 How long do telecom batteries last? The lifespan varies by type; lead-acid batteries typically last 3-5 years, while lithium-ion can last 10 years or more with proper ...

## [The 17 Best Emergency Radios for Preppers](#)

There is little need these days for a complete base station that was the staple of the 70s. The Midland 1001LWX is a mobile car-mounted radio ...



## The 200Ah Communication Base Station Backup Power Lead-acid Battery

GEM Battery GF series communication base station lead-acid batteries are used for telecom communication backup power supply, support multi-channel parallel connection, good ...



## Communication Base Station Backup Power LiFePO4 Supplier

Grepow LiFePO4 battery is with discharge rate to meet the highest instantaneous rate of 150C, 90C discharge for 2 seconds, 45C continuous discharge and 5C fast charging ...



## Contact Us

---

For catalog requests, pricing, or partnerships, please visit:  
<https://www.motheopreprimary.co.za>