

# How many ah are there for a 150 watt solar panel



## Overview

You need a 210 watt solar panel to fully charge a 12v 150ah lead-acid battery from 50% depth of discharge in 6 peak sun hours using an MPPT charge controller. Read the below post to find out how fast you can charge your battery.

Suppose you have a 12v 150ah lead-acid battery with 50% depth of discharge and an MPPT charge controller. You want to recharge your battery in one day and your location receives 6.

A 150W solar panel can ideally charge batteries rated at 12V, approximately 12.5AH per hour under optimal conditions, 2. Thus, a 150W panel could theoretically charge one 12V battery rated at 100AH over multiple hours depending on sunlight, 3. How many watts a solar panel can charge a 150ah battery?

So, to charge your 150Ah battery, you'd need  $1800 \text{ Wh} / 5\text{h} = 360 \text{ W}$  of power constantly for 5 hours to charge the battery. This means that a 360W solar panel at its maximum efficiency can provide 1800Wh of energy in the span of 5 hours.

How many watts is a 150ah battery?

12v 150ah battery is equal to 1800 watt-hours. to calculate the battery watts use this formula (battery Ah x battery volts) How long does it take to charge a 150Ah battery?

150ah battery will take between 5-20 hours to charge, the exact number will depend on the size of the solar panel. How many amps does it take to charge a 150Ah battery?

■

## How many watts of solar panels do I Need?

Assuming a 12V battery, a 150AH capacity, a 6-hour charging time, and 15% efficiency:  $W = 12V \times 150AH / 6 \text{ hours} \times 0.15 = 450W$

5kW solar panel array needed.

How many solar panels are needed?



Cost of 5kW Off Grid Solar System in India, 2023 So, you would need approximately 450 watts of solar panels to charge a 150AH battery in about 6 hours with 15% efficiency.

How many watts of solar panels are needed to charge a battery?

To determine the how many watts of solar panels are needed to charge a 150AH battery, you need to consider some factors like the battery's voltage, the available amount of sunlight in your area, and the charging time. Here's a basic formula to estimate that:  $\text{Wattage (W)} = \text{Voltage (V)} \times \text{Ampere-Hours (AH)} / \text{Charging Time}$ .

How do I charge a 150ah battery of 12 volts?

To charge a 150Ah battery of 12 volts, you'll need 1800 Wh of energy and a minimum of 360 watts from solar panels to charge the battery. You can use two solar panels of 200 watts each with this type of battery for charging it up via your solar energy system. In this article, we will discuss these calculations in detail below.

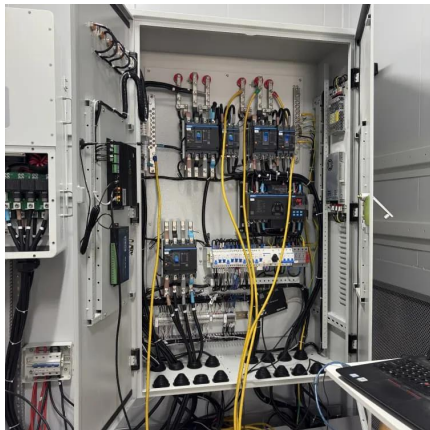
How many solar panels do I need to charge a 50Ah battery?

You need around 180 watts of solar panels to charge a 12V 50ah Lithium (LiFePO4) battery from 100% depth of discharge in 4 peak sun hours with an MPPT charge controller. Related Post: [How Long Will A 50Ah Battery Last?](#)



## How many ah are there for a 150 watt solar panel

---

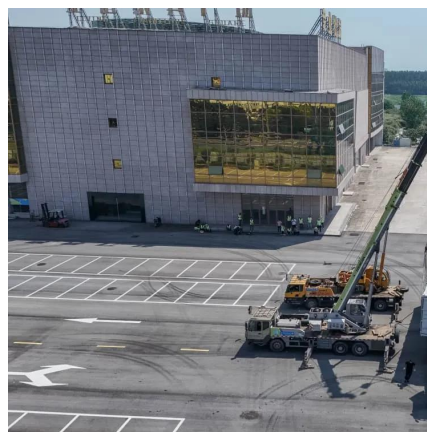


### How Many Watts of Solar Panel Need to Charge a 150AH Battery?

To determine the how many watts of solar panels are needed to charge a 150AH battery, you need to consider some factors like the battery's voltage, the available amount of ...

### Low priced Solar panel for 150 ah battery , Amazon® Official Site

Find deals and low prices on solar panel for 150 ah battery at Amazon . Browse & discover thousands of brands. Read customer reviews & find best sellers



### [What size battery is needed for a 150 watt solar panel?](#)

In summary, for a 150 watt solar panel that produces around 600 - 750 Wh of energy per day, if you're using a 12 - volt lead - acid battery with a 50% DoD and an 80% charging efficiency, ...

### [What Size Charge Controller Do I Need For A 100W ...](#)

When it comes to figuring out what size charge controller you need for a 100-watt solar panel, there are many rough estimates that people use to guess the size ...



### [What Size Solar Panel To Charge 100Ah Battery?](#)

A 400-watt solar panel will charge a 100Ah 12V lithium battery in 2.7 peak sun hours (or, realistically, in about half a day, if we presume an average of 5 peak ...



## Solar Panel Size Calculator

Use our solar panel size calculator to find out what size solar panel you need to charge your battery in desired time. Simply enter the battery specifications, including Ah, volts, ...



### [Solar Panel Size To Charge A 12V Battery \(50Ah, 80, ...](#)

Typically, a 12-volt solar panel rated at 100 watts charges a capacity of around 5 amps per hour (Ah). On a typical solar day, with 6 hours ...

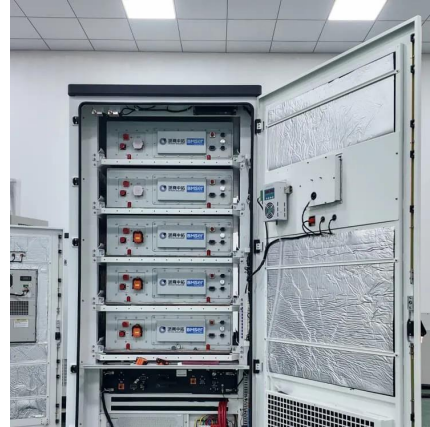






## How many Solar Panels Required to Charge a 150ah Battery

Normally, to fully charge a 150 Ah battery, we need 1.5 -2 units of electricity. To generate about two units of electricity from a solar panel, we need a solar panel of up to 400w-500w, because ...



## [How Many kWh Does A Solar Panel Produce Per Day?](#)

Quick outtake from the calculator and chart: For 1 kWh per day, you would need about a 300-watt solar panel. For 10kW per day, you would need about a 3kW solar system. If we know both the ...

## [What Size Inverter For a 100W Solar Panel?](#)

How to Calculate Solar Inverter Size Calculating inverter sizes is the same no matter what the solar panel output is. Before you can figure out what inverter capacity to use, you must know ...



## How many AH batteries can be charged with 150w solar energy?

By employing the voltage rating (generally 12 volts for most applications), we can decode the following: For a 150W output panel, under ideal circumstances, operating five ...



## What Size Solar Panel To Charge 150ah Battery? (Calculator)

You need a 210 watt solar panel to fully charge a 12v 150ah lead-acid battery from 50% depth of discharge in 6 peak sun hours using an MPPT charge controller. Read the below ...

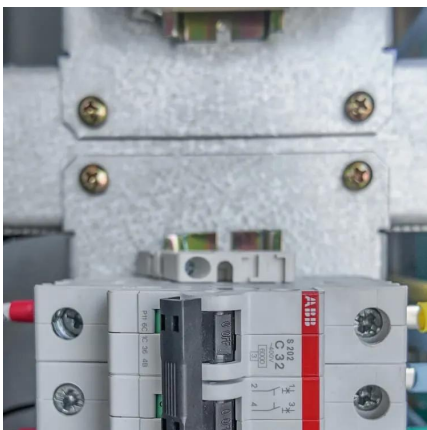


### [Is 150-watts of solar panels enough?](#)

How much energy will a 150-watt solar panel provide? The general rule of thumb is that each 100 watts of solar will be able to provide between 300 and 400 watt-hrs of charging ...

### [How many AH batteries can be charged with 150w ...](#)

By employing the voltage rating (generally 12 volts for most applications), we can decode the following: For a 150W output panel, under ...



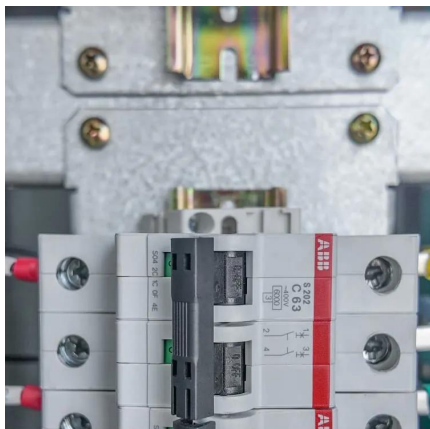
### **How Many Batteries Do I Need for a 200 Watt Solar Panel?**

An average 200-watt solar panel will charge a typical 12-volt car battery in 5-8 hours. The charge time depends on the battery capacity, and it takes around 2.5 hours for a ...



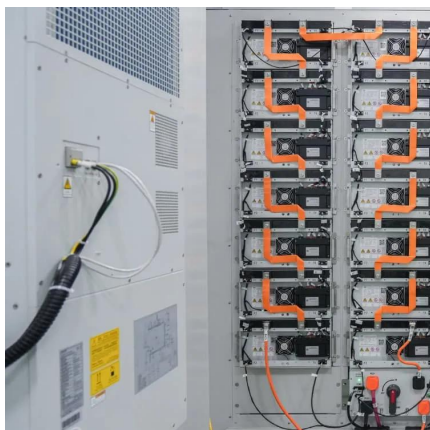
### Is 150-watts of solar panels enough?

Since you have 150 watts of solar, that equals 1.5 times 100 watts of solar panels. So if you multiply 1.5 times the 300 Watt-hours per day per 100-watt panel, that equals around ...



### **What Wattage Solar Panel is Required to Charge a 150Ah Battery?**

Read on to learn about how much solar energy is required to charge a 150Ah battery so it can be utilized as a backup to run your appliances. To charge a 150Ah battery of 12 volts, you'll need ...



### What Wattage Solar Panel is Required to Charge a ...

Read on to learn about how much solar energy is required to charge a 150Ah battery so it can be utilized as a backup to run your appliances. To charge a ...



### Solar Panel Size Calculator: What Size Panel Do I ...

Calculate what size solar panel you need to charge a lithium or lead acid battery with our free solar panel size calculator.





### Is 150-watts of solar panels enough?

How much energy will a 150-watt solar panel provide? The general rule of thumb is that each 100 watts of solar will be able to provide ...



### **How Many Solar Panels Does It Take To Charge a 150 AH Battery?**

So, we would require more than 450 watts of solar panels to charge a 150 AH battery around 4 hours under a clear and sunny sky. But no inverter will charge the battery ...

### Solar Panel Size Calculator , Check Battery Charge ...

How to Use the Solar Panel Size Calculator Using the Solar Panel Size Calculator is straightforward. Start by entering your battery's ...



### **How Much Watt Solar Panel Required to Charge 150Ah Battery ...**

Discover how to efficiently charge a 150Ah battery using solar panels in off-grid situations like camping or RV living. This comprehensive guide explores the necessary ...





## How Many Solar Panels Are Required To Efficiently Charge A ...

Therefore, it is advisable to use a total of 300 watts in solar panel capacity to ensure that the 150Ah battery charges efficiently and reliably. Understanding these basic ...



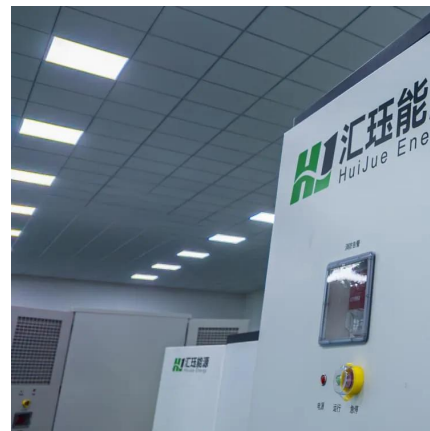
### What Size Solar Panel To Charge 150ah Battery?

You need about 250 - 300 watt solar panel to charge a 12V 150Ah lead-acid battery from 50% depth of discharge in 5 peak sun hours. What Size ...



### Solar Panel Charging Time Calculator

Solar Panel Charging Time Calculator: To calculate the charging time, input panel wattage, battery Ah, and local peak sun hours.



## How Many Watts of Solar Panels Are Required to Charge a ...

To summarize, roughly 400 watts of solar panels are required to efficiently charge a 150Ah battery. In the next section, we will examine how to estimate solar panel output and ...





## Contact Us

---

For catalog requests, pricing, or partnerships, please visit:  
<https://www.motheopreprimary.co.za>