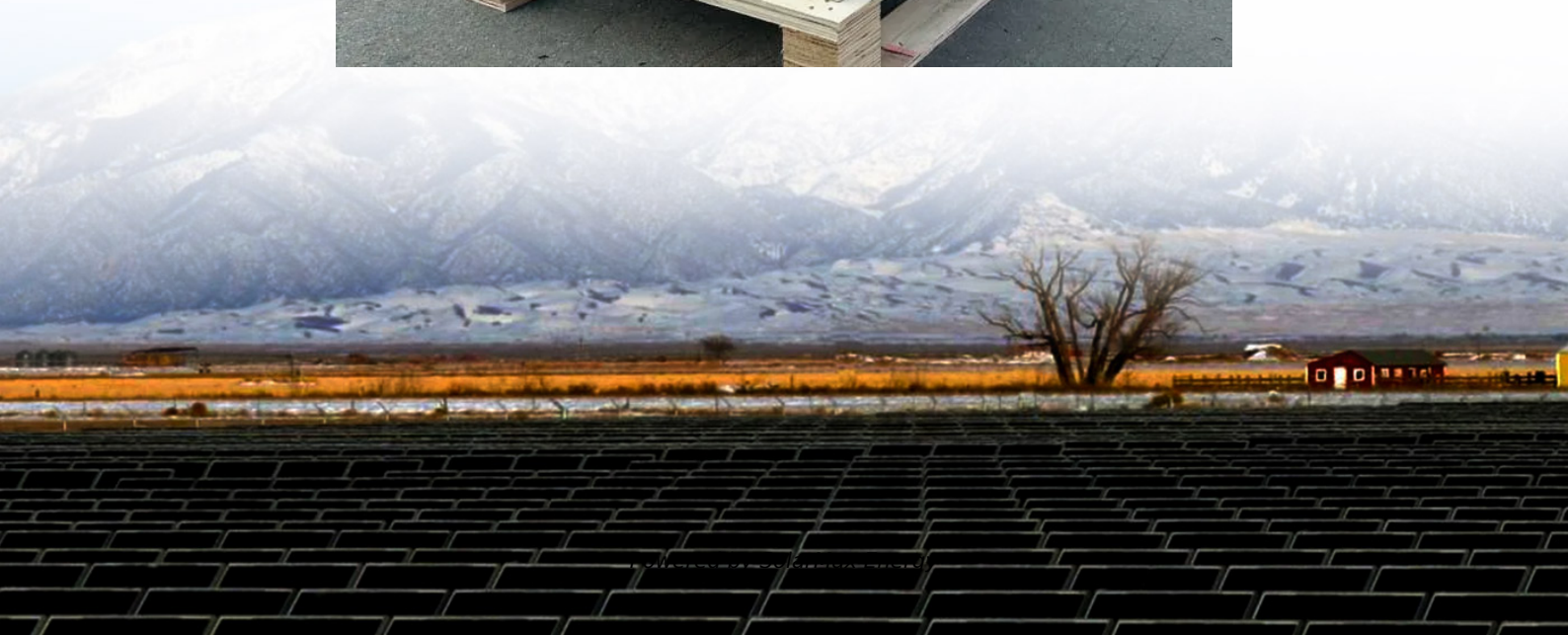


How many degrees should solar power be used at home





Overview

The ideal sweet spot for most residential solar installations is around 77°F (25°C), which manufacturers use as the standard test condition temperature. At this temperature, panels can operate at their rated efficiency levels, typically converting 15-20% of sunlight into electricity. Which temperature is best for solar panels?

Solar panels perform best within a specific temperature range, typically between 59°F and 95°F (15°C to 35°C). Contrary to what many might assume, warmer isn't always better when it comes to solar panel efficiency. In fact, solar panels are more efficient in cooler temperatures, as long as they receive adequate sunlight.

Are solar panels rated to operate in a wide temperature range?

Although extreme conditions will affect solar panel performance efficiency, solar panels are rated to operate in a very wide temperature range. Designed to function in real-world conditions, most solar panels have an operating temperature range wide enough to cover every single day of your system's multi-decade lifetime.

Are solar panels more efficient if it's 80 degrees a day?

Therefore, on an 80-degree day (3 degrees above ideal temperatures) solar panels would be 1.05% less efficient (.35 x 3 degrees). In this example, with a marginal efficiency loss of 1.05%, your solar panel would work at a power production efficiency of 98.95%. (Solar panels can become much warmer than ambient temperatures.).

How do I choose the best solar panels for my home?

When selecting solar panels for your home, considering the temperature coefficient alongside other factors can help you choose the most suitable option for your climate. Solar panels perform best within a specific temperature range, typically between 59°F and 95°F (15°C to 35°C).



How efficient are solar panels?

At this temperature, panels can operate at their rated efficiency levels, typically converting 15-20% of sunlight into electricity. For every degree Celsius above the ideal temperature, solar panel efficiency typically decreases by 0.3-0.5%.

What is the operating temperature range of a solar panel?

Designed to function in real-world conditions, most solar panels have an operating temperature range wide enough to cover every single day of your system's multi-decade lifetime. For instance, solar panels sold by Mission Solar, Jinko Solar, and Tesla Solar are all rated with an operating range of -40°F to +185°F.



How many degrees should solar power be used at home

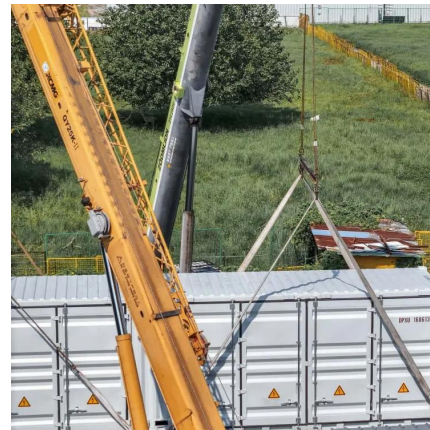


[A Pro Guide to Installing Solar Panels](#)

The cost of professional solar panel installation relies on a range of factors, including the number of solar panels needed. Most single-family homes need 15-19 solar ...

[How many degrees should the solar thermostat be ...](#)

The optimal temperature setting for a solar thermostat typically ranges between 68°F (20°C) and 72°F (22°C), depending on individual ...



[How many degrees of solar energy are needed](#)

1. The specific amount of solar energy required varies based on various factors, including location, energy needs, and technology used, 2. ...

How Much Should Solar Panels Be Tilted? [Does Tilt Matter?]

Final Thoughts The angle of your solar panel, which is influenced by two factors--latitude and season--can change how much solar electricity you generate. By ...



[How Does Temperature Affect Solar Panels?](#)

Most modern solar panels are designed to work from -40 to 185 degrees. Here's what you need to know about how temperature affects solar panels. Have you ever felt a little ...



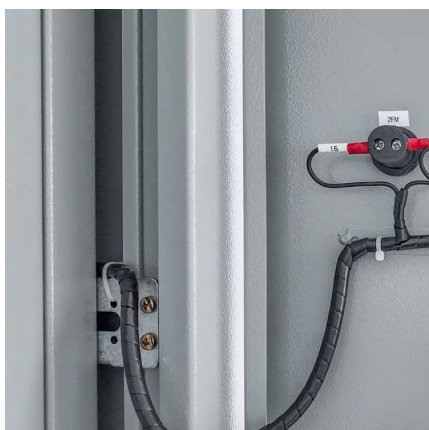
[Maximize Your Solar Efficiency: Calculating the Best ...](#)

Maximize your solar efficiency with our guide on solar panels direction calculator. Learn optimal orientation, tilt angles, and more.



Solar Panel Angle Calculation: Your Ultimate How-To Guide

Learn how to calculate solar panel angle for optimal energy. Discover factors, methods, and tools to maximize solar panel efficiency.





How many degrees of solar energy do you need to keep warm?

Understanding the heat distribution needs of a home will determine whether solar thermal systems are sufficient or if a hybrid approach may be necessary for optimal heating ...

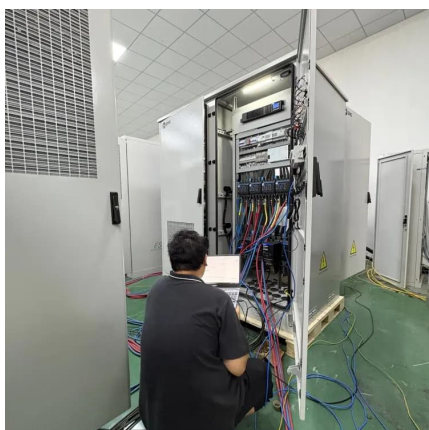


How many degrees should the home solar panel be ...

The optimal angle for home solar panels should be adjusted based on several factors, including location, season, and roof orientation. Accurate ...

How many degrees does a solar panel require?

How many degrees does a solar panel require? Solar panels typically function optimally at an angle between 30 and 45 degrees, depending ...



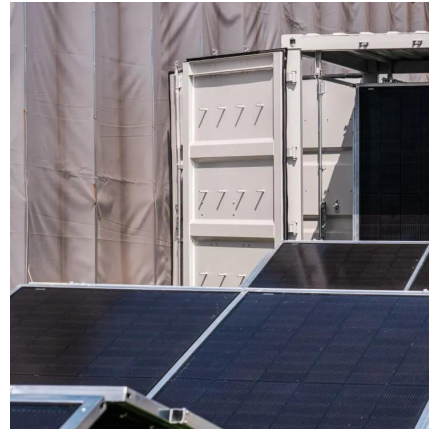
How Temperature Affects Your Solar Panel Output (With ...

In fact, solar panels are more efficient in cooler temperatures, as long as they receive adequate sunlight. The ideal sweet spot for most residential solar installations is ...



How many degrees can solar energy be used indoors , NenPower

In detail, while solar panels are typically designed for outdoor use, advancements have enabled them to perform in indoor settings. This capacity is especially beneficial for ...



How many degrees of solar energy do you need to ...

Understanding the heat distribution needs of a home will determine whether solar thermal systems are sufficient or if a hybrid approach ...

Panels and power: How to position and what to expect.

We looked at the angle and range that a solar panel works, so we already know that the solar panel has a 70 degree power range, and peak ...



How Many Solar Panels Do I Need To Power A ...

One of the first questions homeowners ask when going solar is, "How many solar panels do I need to power my home?" The goal for any solar ...



Homeowner's Guide to Going Solar . Department of Energy

Typically, solar panels perform best on south-facing roofs with a slope between 15 and 40 degrees, though other roofs may be suitable too. You should also consider the age of your ...



How many degrees can solar energy be used indoors ...

Photovoltaic (PV) panels are commonly installed on rooftops for outdoor energy generation, but their application indoors should not be ...



How many degrees can solar energy be used outdoors

Solar energy can be harnessed effectively across various outdoor applications, typically ranging from 0 to approximately 45 degrees Celsius (1), allowing for a wide scope of ...



How Does Temperature Affect Solar Panels?

Most modern solar panels are designed to work from -40 to 185 degrees. Here's what you need to know about how temperature affects solar ...





How many degrees should the solar thermostat be adjusted?

The optimal temperature setting for a solar thermostat typically ranges between 68°F (20°C) and 72°F (22°C), depending on individual preferences and environmental conditions.



How many degrees of solar energy is set at home , NenPower

Solar energy degrees typically refer to the effectiveness of a solar power system in generating electricity over a specified period. Depending on the geographic location, solar ...

How many solar panels do you need to power a UK home?

Solar panels can cut your bills, reduce your emissions, and protect you from energy price rises. We'll help you work out how many you need.



How many degrees is suitable for solar panels , NenPower

In determining the optimal angle for solar panels, it is crucial to consider various factors that influence their efficiency and energy production.

1. The ideal tilt angle varies based ...



How many degrees should the home solar panel be set to?

The optimal angle for home solar panels should be adjusted based on several factors, including location, season, and roof orientation. Accurate inclination can significantly ...

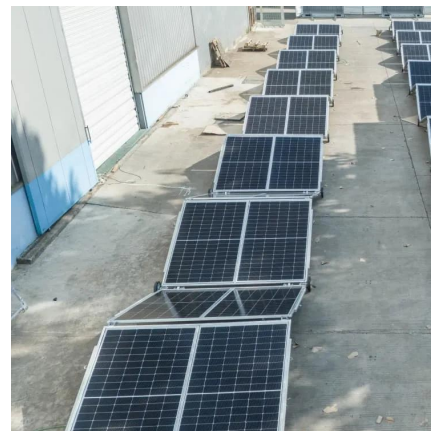


What Is the Best Angle for Solar Panels?

Choosing the right solar panel angle can boost system efficiency and energy bill savings. Read our guide to learn how to find the best angle for your setup.

How many degrees can solar energy be used indoors ...

In detail, while solar panels are typically designed for outdoor use, advancements have enabled them to perform in indoor settings. This capacity ...



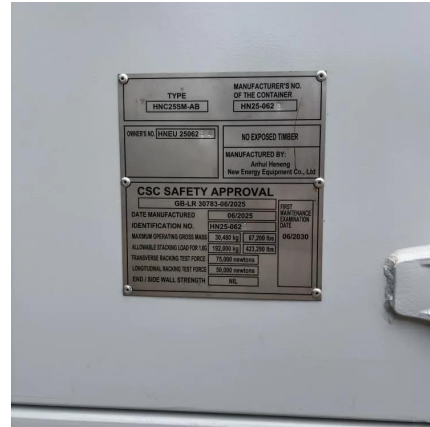
How Many Solar Panels Do You Need To Power Your ...

Solar Power - Discover how many solar panels your home needs based on energy use, panel size, and sun hours. Learn how to size your ...



How many degrees should solar energy be in summer

Solar panels should ideally be installed at an angle that aligns with the sun's path--this varies based on geographical location. Adjusting this angle seasonally can also ...



Contact Us

For catalog requests, pricing, or partnerships, please visit:
<https://www.motheopreprimary.co.za>