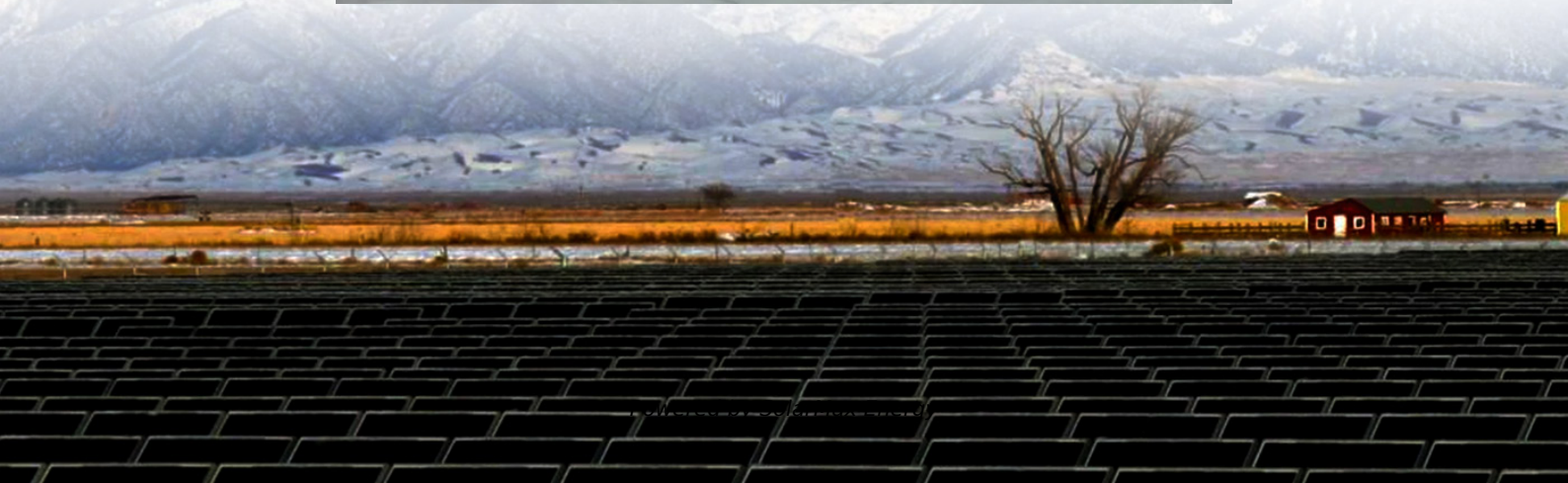


How many phase batteries are suitable for communication base stations





Overview

Which battery is best for telecom base station backup power?

Among various battery technologies, Lithium Iron Phosphate (LiFePO₄) batteries stand out as the ideal choice for telecom base station backup power due to their high safety, long lifespan, and excellent thermal stability.

What makes a telecom battery pack compatible with a base station?

Compatibility and Installation Voltage Compatibility: 48V is the standard voltage for telecom base stations, so the battery pack's output voltage must align with base station equipment requirements. Modular Design: A modular structure simplifies installation, maintenance, and scalability.

Why is backup power important in a 5G base station?

With the rapid expansion of 5G networks and the continuous upgrade of global communication infrastructure, the reliability and stability of telecom base stations have become critical. As the core nodes of communication networks, the performance of a base station's backup power system directly impacts network continuity and service quality.

What is a 48V 100Ah LiFePO₄ battery pack?

Our 48V 100Ah LiFePO₄ battery pack, designed specifically for telecom base stations, offers the following features: High Safety: Built with premium cells and an advanced BMS for stable and secure operation. Long Lifespan: Over 2,000 cycles, significantly reducing replacement and maintenance costs.

How do you protect a telecom base station?

Backup power systems in telecom base stations often operate for extended periods, making thermal management critical. Key suggestions include: Cooling System: Install fans or heat sinks inside the battery pack to ensure efficient heat dissipation.



What is a wide temperature range LiFePO4 battery?

This translates to lower replacement frequency and maintenance costs. Wide Temperature Range LiFePO4 batteries operate reliably in temperatures ranging from -20°C to 60°C, making them suitable for the diverse and often extreme environments of telecom base stations.



How many phase batteries are suitable for communication base sta



What Are the Critical Aspects of Telecom Base Station Backup Batteries?

Lithium iron phosphate (LiFePO_4) batteries have become the preferred choice due to their high energy density, long cycle life, thermal stability, and safety.

[Introduction to Communication Base Station Batteries](#)

2) The optimized configuration results of the three types of energy storage batteries showed that since the current tiered-use of lithium batteries for communication base station backup power ...



[Battery technology for communication base stations](#)

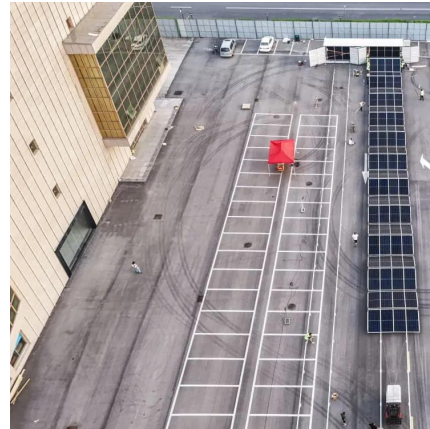
Feasibility study of power demand response for 5G base station In order to ensure the reliability of communication, 5G base stations are usually equipped with lithium iron phosphate cascade ...

[Battery technology for communication base stations](#)

In order to ensure the reliability of communication, 5G base stations are usually equipped with lithium iron phosphate cascade batteries with high energy density and high



charge and ...



The Base Station in Wireless Communications: The Key to ...

Base station, also known as BTS (Base Transceiver Station), is a key device in wireless communication systems such as GSM. Equipped with an electromagnetic wave ...



What Powers Telecom Base Stations During Outages?

Telecom batteries for base stations are backup power systems using valve-regulated lead-acid (VRLA) or lithium-ion batteries. They ensure uninterrupted connectivity ...



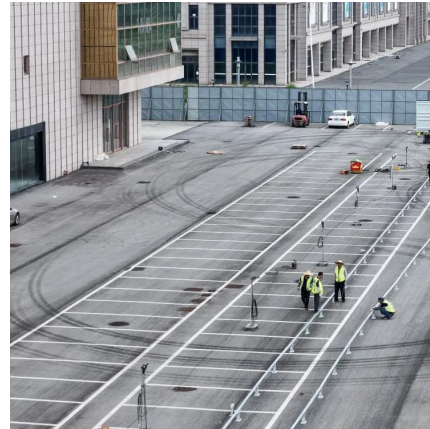
Battery specifications for communication base stations

Telecom battery backup systems of communication base stations have high requirements on reliability and stability, so batteries are generally used as backup power to ensure continuous ...



BATTERY ENERGY STORAGE SYSTEMS (BESS)

TE Connectivity (NYSE: TE L) designs and manufactures products at the heart of electronic connections for the world's leading industries, including automotive, energy and industrial, ...

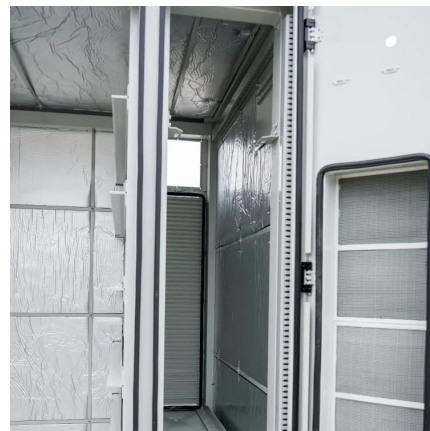
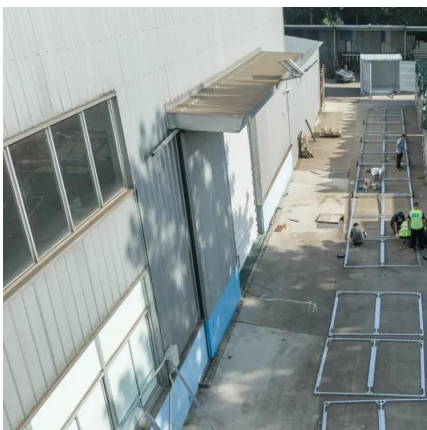


Selection and maintenance of battery for communication base ...

Focused on the engineering applications of batteries in the communication stations, this paper introduces the selections, installations and maintenances of batteries for communication ...

What Size Battery for Base Station? , Huijue Group E-Site

New EU Ecodesign mandates effective 2024 require base station batteries to have 90% recyclability. This shifts the calculus toward lithium-based solutions despite higher upfront costs.



Understanding Backup Battery Requirements for ...

Telecom base stations require reliable backup power to ensure uninterrupted communication services. Selecting the right backup battery is ...



Does the communication base station energy storage lithium ...

Are lithium batteries suitable for a 5G base station? 2) The optimized configuration results of the three types of energy storage batteries showed that since the current tiered-use of lithium ...



How about base station energy storage batteries , NenPower

1. Base station energy storage batteries play a critical role in enhancing efficiency and reliability in telecommunication networks. Their primary purpose is **1. to ensure ...



Telecom Base Station Backup Power Solution: Design Guide for ...

Designing a 48V 100Ah LiFePO4 battery pack for telecom base stations requires careful consideration of electrical performance, thermal management, safety protections, and ...



Selection and maintenance of batteries for communication base stations

Focused on the engineering applications of batteries in the communication stations, this paper introduces the selections, installations and maintenances of batteries for communication ...





Selection and maintenance of batteries for communication base ...

Focused on the engineering applications of batteries in the communication stations, this paper introduces the selections, installations and maintenances of batteries for communication ...



Base Station Batteries

REVOV's lithium iron phosphate (LiFePO₄) batteries are ideal telecom base station batteries. These batteries offer reliable, cost-effective backup power for communication networks. They ...



How many tons of energy storage batteries are used in base stations

The preferred types of energy storage batteries for base stations vary based on several factors, including cost, efficiency, application, and environmental considerations. ...



Station Communication

How many communication base stations are needed to cover a city ? This article discusses the factors affecting the number of communication base stations required for a city, including city ...





Optimal configuration of 5G base station energy storage ...

The high-energy consumption and high construction density of 5G base stations have greatly increased the demand for backup energy storage batteries. To maximize overall ...



Types and Applications of Mobile Communication ...

Mobile communication base station is a form of radio station, which refers to a radio transceiver station that transmits information between mobile ...

Selection and maintenance of battery for communication base station

Focused on the engineering applications of batteries in the communication stations, this paper introduces the selections, installations and maintenances of batteries for communication ...



LoRaWAN Base Station: Your Ultimate Guide to Long-Range IoT ...

Unlock the potential of LoRaWAN Base Stations for long-range IoT communication. Learn their benefits, applications, and more!



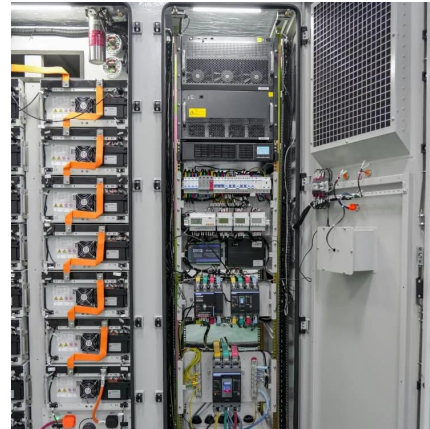
What Are the Critical Aspects of Telecom Base Station Backup ...

Lithium iron phosphate (LiFePO₄) batteries have become the preferred choice due to their high energy density, long cycle life, thermal stability, and safety.



Lithium-ion Battery For Communication Energy Storage System

4. Larger and larger demand for batteries in the communications field In recent years, operators in several countries around the world have stepped up the deployment of 5G ...



Communication Base Station Li-ion Battery Market's ...

The global Communication Base Station Li-ion Battery market is experiencing robust growth, driven by the increasing deployment of 5G and other advanced wireless ...



Telecom Base Station Backup Power Solution: Design ...

Designing a 48V 100Ah LiFePO₄ battery pack for telecom base stations requires careful consideration of electrical performance, thermal ...



How many tons of energy storage batteries are used ...

The preferred types of energy storage batteries for base stations vary based on several factors, including cost, efficiency, application, and ...



Understanding Backup Battery Requirements for Telecom Base Stations

Telecom base stations require reliable backup power to ensure uninterrupted communication services. Selecting the right backup battery is crucial for network stability and ...

Contact Us

For catalog requests, pricing, or partnerships, please visit:
<https://www.motheopreprimary.co.za>