

How many solar panels can be connected to a 15kw inverter





Overview

Can I connect more solar panels to an inverter?

It's not a good idea to connect more solar panels to an inverter than it's rated for. But if the total power output of the solar panels matches or is within the maximum rated capacity of the inverter, then it's safe and efficient.

How many solar panels can a 5 kW inverter use?

You will also need to consider the wattage of the solar panels you plan to use. For example, if you have a 5 kW inverter and each of your solar panels is rated at 300 watts, you can calculate the maximum number of panels by dividing the inverter's capacity by the panel wattage: $5,000 \text{ watts (inverter)} / 300 \text{ watts (panel)} = \text{approximately } 16.67$.

How much power does a 5KVA inverter need?

If you are looking to power a 5kva inverter with solar panels, you will need at least 18 250-watt panels. This is because the inverter will require 1,500 watts of power and each panel produces about 250 watts of power. Inverters also have a peak wattage, which is usually about 50% higher than the continuous wattage.

How many volts can a solar inverter handle?

Each inverter comes with its specific ratings, including input voltage, output power, and the ability to manage several strings of solar panels. For instance, if your inverter supports a maximum input voltage of 600 volts and your solar panel system operates at a lower voltage, you are in safe territory.

How many solar panels can a 600V inverter connect?

If an inverter has a maximum input voltage of 600V and each panel produces 40V, you could connect up to 15 panels in series ($15 \times 40V = 600V$). Going over this voltage limit can harm the inverter or make it shut down, making your solar system less effective or even unusable. Equally important is the



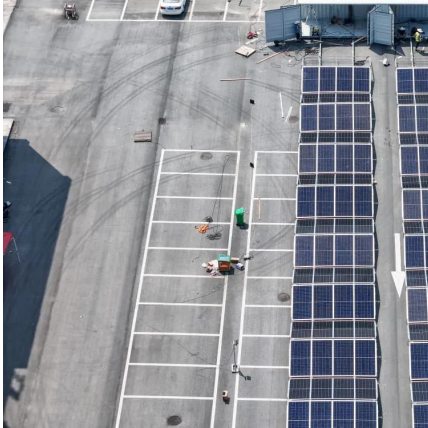
minimum input voltage.

What is the maximum input voltage of a solar panel inverter?

The maximum input voltage of a solar panel inverter determines how you should set up your solar panels. Here's an example: If an inverter has a maximum input voltage of 600V and each panel produces 40V, you could connect up to 15 panels in series ($15 \times 40V = 600V$).



How many solar panels can be connected to a 15kw inverter



[Solar Inverter Sizing to Improve Solar Panel Efficiency](#)

The system efficiency of your solar power system can be impacted by under-sizing or over-sizing your inverter. What are the implications of ...

[String Sizing Guide: How Many Solar Panels Can I ...](#)

String sizing describes the calculations we make to determine how many panels we should plug into one input for optimal efficiency. A panel ...



Is it Safe to Have Too Many Solar Panels on an Inverter?

Can you ever have too many solar panels connected to an inverter? It's not a good idea to connect more solar panels to an inverter than it's rated for. But if the total power output ...

[How Many Panels Can I Put on My Inverter?](#)

A general rule of thumb is that you can put up to twice as many panels on an inverter as the inverter can handle in watts. So, if you have a ...



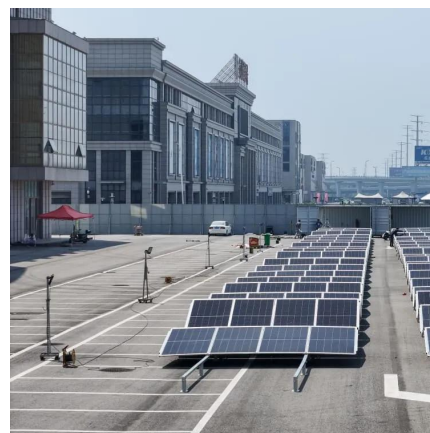
[DELTA Pro Ultra FAQ: Everything You Need To Know](#)

How Many Solar Panels Can You Connect to EcoFlow DELTA Pro Ultra? All solar panels -- and other photovoltaic modules like solar shingles -- come with a rated power output that's ...



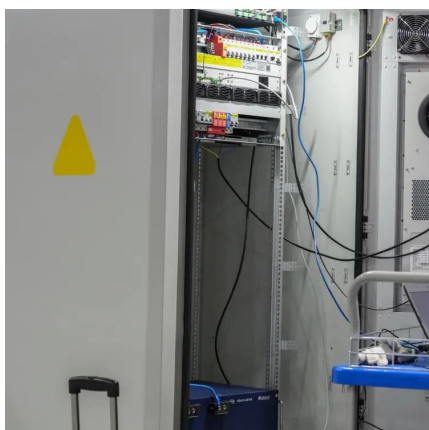
[How Many Solar Panels Can I Connect to My Inverter?](#)

Adding solar panels is an obvious solution, but how many of these PV modules can your inverter handle? A solar array can be up to 130% of the inverter capacity.



[How Many Solar Panels for A 10kva Inverter?](#)

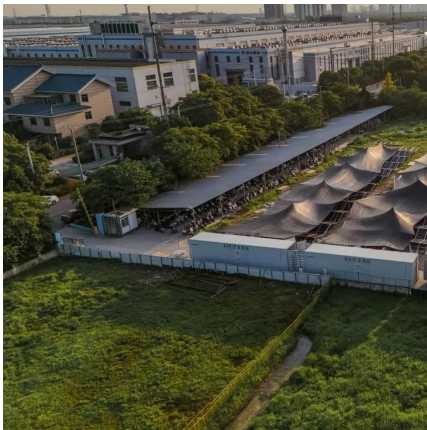
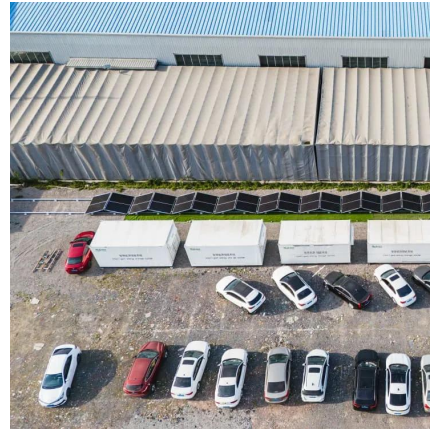
Generally, a 10kVA inverter requires a minimum of 24 to 27 solar panels, each with a wattage of 350W or more. However, this number can vary ...





String and Array sizing for a solar project

When number of modules are connected in series and parallel combination it is known as PV array and the effective output of a PV array is determined based on the ...



How Many Batteries do I Need for Hybrid Inverter 10KW?

A hybrid inverter 10kw is a powerful solution for those looking to maximize the benefits of solar energy while achieving energy independence.

Solar Inverters: The Complete Guide

Our Solar Inverters Guide covers Hybrid, Off-grid and Grid-tied inverters available in South Africa. Find your perfect inverter today.



How many solar panels can I use with a particular inverter?

To determine the maximum number of solar panels you can use with an inverter, take the inverter's maximum input voltage and divide by your solar panel's Open Circuit ...



[Connecting too many solar panels to the inverter](#)

How many solar panels can I connect to a solar inverter? To ensure the safety and effectiveness of the solar power system, it is important to consult with a professional ...



[How Many Solar Panels, Batteries & Inverter Do I ...](#)

Below is a DIY (do it yourself) complete note on Solar Panel design installation, calculation about No of solar panels, batteries rating / backup ...

How Many Solar Panels, Batteries & Inverter Do I Need for Home?

Below is a DIY (do it yourself) complete note on Solar Panel design installation, calculation about No of solar panels, batteries rating / backup time, inverter/UPS rating, load ...



[How Many Solar Panels Do I Need To Power a House ...](#)

An easy guide to finding out how many solar panels you need to install to fully offset your electricity usage.



How Many Solar Panels Can I Connect to My Inverter?

A: To determine how many solar panels your inverter can handle, you need to check the inverter's power rating, typically measured in kilowatts ...

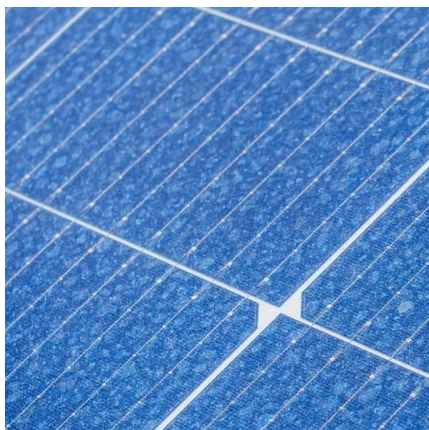


Deye 12kw 3-Phase optimal PV Configuration

Hi all, So im ready to acquire 2x Deye 12kw 3-Phase inverters (SUN-12K-SG04LP3-EU), but i need some assistance with the PV array ...

How Many Solar Panels Can I Connect to an Inverter? A ...

This guide will discuss the factors that determine how many solar panels can be connected to an inverter, such as inverter specifications, wiring configurations, and the use of charge controllers.



How many solar panels can I connect to an inverter

Consider this: if your solar inverter can handle up to 3000W of electricity, you can connect or string solar panels generating 3900W, and the solar inverter will run fine. This is called ...



How many solar panels can be connected to a 15kw inverter

The number of solar panels supported by a 15 kW inverter varies based on each panel's wattage rating. If, for example, each solar panel has a 300W output, a maximum of 50 ...

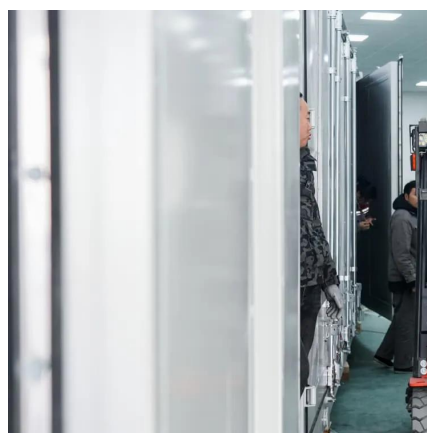


[How many panels can I connect to one inverter?](#)

Find out how many solar panels you can safely and efficiently connect to one inverter. Read our tips on optimal sizing for maximum yield.

[How many solar panels can an inverter handle](#)

A: To determine how many solar panels your inverter can handle, you need to check the inverter's power rating, typically measured in kilowatts (kW). You will also need to ...



Size your solar system

Inverter sizing In many systems, the inverter is sized to be smaller than the panel output. For example, a 6.6 kW solar system is often paired with a 5 kW inverter. Because the panels are ...



How many solar panels can I connect to my Inverter?

MPPT 150VDC Maximum PV array power of 3200w Maximum solar charging current is 80A
How many solar PV panels can I connect if the ...



How Many Panels Can I Put on My Inverter?

A general rule of thumb is that you can put up to twice as many panels on an inverter as the inverter can handle in watts. So, if you have a 1,000-watt inverter, you could ...

String Sizing Guide: How Many Solar Panels Can I String Into My Inverter?

String sizing describes the calculations we make to determine how many panels we should plug into one input for optimal efficiency. A panel string is a group of panels wired ...



How Many Solar Panels Can I Connect to an Inverter?

This guide will discuss the factors that determine how many solar panels can be connected to an inverter, such as inverter specifications, wiring ...



Is it Safe to Have Too Many Solar Panels on an Inverter?

Can you ever have too many solar panels connected to an inverter? It's not a good idea to connect more solar panels to an inverter than ...



Panel sizing for sunsynk 5kW

The 540w panels are ideal for the inverter, just right. If it's a case of put 4 now, then do it, get more later. Ideal setup suggests 6x-7x 540w panels per mppt, for a total of 12-14 ...

Contact Us

For catalog requests, pricing, or partnerships, please visit:
<https://www.motheopreprimary.co.za>