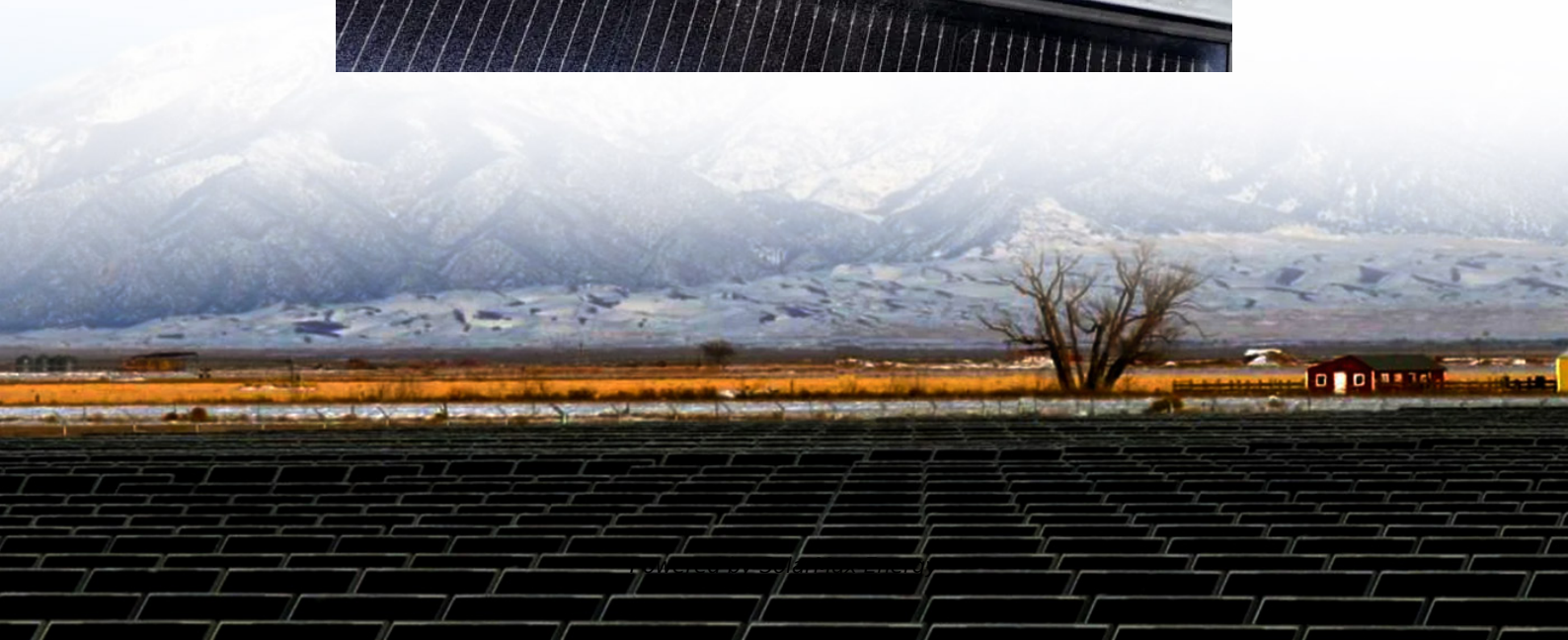


How many watts does a 16 square meter solar panel have





Overview

Measure the size of a solar panel in square meters (m^2). Example: A panel is 1.6 m^2 . Multiply the size by 1,000. Example: $1.6 \text{ m}^2 \times 1,000 = 1,600$ watts. Multiply the result by the efficiency percentage (expressed as a decimal). Example: If the efficiency is 20%, then $1,600 \times 0.20 = 320$ watts. How many Watts Does a solar panel produce per square meter?

On average, a solar panel produces around 150 to 200 watts per square meter. This can vary due to: Example: A 1.7 m^2 panel with 20% efficiency will produce about 340W in full sun. Note: Monocrystalline panels lead in efficiency, making them ideal for rooftops with limited space.

What is a solar power per square meter calculator?

It also includes wiring, inverter, charge controller, and battery bank (if used). A solar power per square meter calculator takes details regarding these factors and then gives the accurate output generated by the solar panel per square meter. After this, it's time to learn about solar panel output calculators.

How much power does a solar panel have?

Their power generally varies between 250 and 370 watts, and their dimensions are around $1.65 \text{ m} \times 1 \text{ m}$. These panels are designed to be installed on the roofs of individual houses. Intended for large-scale installations, these panels offer greater power (up to 500 watts) and larger dimensions (approximately $2 \text{ m} \times 1 \text{ m}$).

How much solar energy is received per square meter?

The amount of solar intensity received by the solar panels is measured in terms of square per meter. The sunlight received per square meter is termed solar irradiance. As per the recent measurements done by NASA, the average intensity of solar energy that reaches the top atmosphere is about 1,360 watts per square meter.



What is solar wattage?

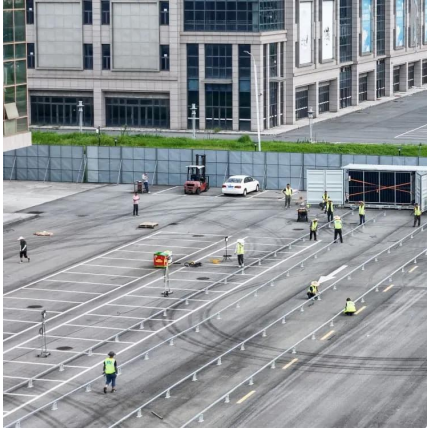
Wattage refers to the amount of electrical power a solar panel can produce under standard test conditions (STC), which simulate a bright sunny day with optimal solar irradiance ($1,000 \text{ W/m}^2$), a cell temperature of 25°C , and clean panels. In simpler terms, a panel's wattage rating tells you its maximum power output under ideal conditions.

How many watts can a 400 watt solar panel produce?

A 100-watt panel can produce 100 watts per hour in direct sunlight. A 400-watt panel can generate 400 watts per hour under the same conditions. This doesn't mean they'll produce that amount all day, output varies with weather, shade, and panel orientation. Solar Power Meter Digital Solar Energy Meter Radiation Measuremen.



How many watts does a 16 square meter solar panel have



How much electricity does a solar panel produce? A summary of ...

How much energy does a square meter of solar panels produce? For our reference cities, a 1 square meter panel area could produce from 200 to 364 kWh electricity ...

[Solar Panel Dimensions Sizes and Wattage](#)

In terms of dimensions, a 300w monocrystalline or polycrystalline solar panel typically has a length of around 1.6 meters and a width of 1 meter. However, these dimensions ...



How many watts is a square meter of solar panel? , NenPower

The power output of a solar panel per square meter typically ranges from 150 to 200 watts, which can be influenced by various factors such as efficiency, orientation, and ...



[Calculate Solar Panel kWp & KWh \(KWh Vs. KWp\)](#)

Let's say 1,000-watts per square meter of sunlight is hitting your area, and if you have a 1 square meter panel, you'll end up with 1,000-watts ...



[Solar Panel Wattage and Size: How Many Panels Do ...](#)

Wattage is the heartbeat of your solar panels--it determines how much electricity each panel produces. But what does wattage really mean? It's ...



How Big Is A Solar Panel In Meters?

Solar panel dimensions play a crucial role in the efficiency and installation of solar energy systems. This guide explores the standard sizes of residential and commercial solar ...



[How Many kWh Does A Solar Panel Produce Per Day?](#)

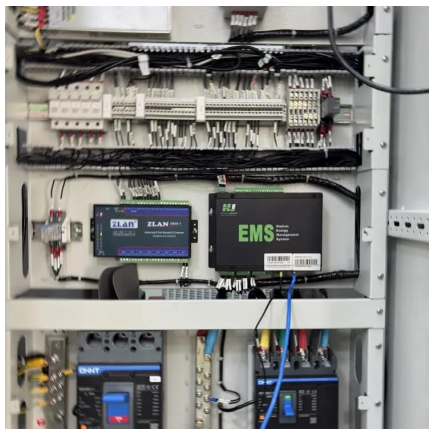
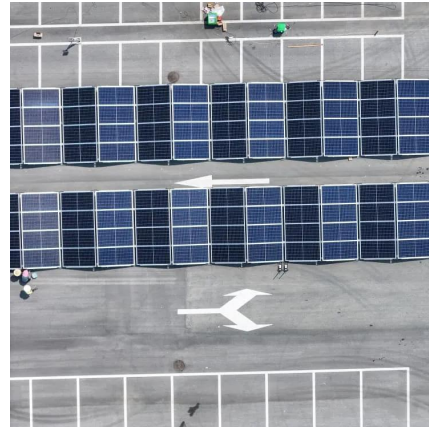
FAQs 1. What are peak sun hours? Peak sun hours refer to the number of hours per day when sunlight intensity is at least 1,000 watts per ...





[Solar Power per Square Meter Calculator](#)

On average, a solar panel produces around 150 to 200 watts per square meter. This can vary due to: Example: A 1.7 m² panel with 20% ...



[How Much Energy Does One Solar Panel Produce in ...](#)

A standard solar panel in Australia typically produces around 300 to 370 watts of power per hour under optimal conditions. It is approximately 1.2 ...

[How many watts does a square meter of solar panel have?](#)

In general, the output from solar panels can yield approximately 100 to 200 watts per square meter during peak sunlight hours. However, this is subject to conditions such as ...



Solar Panel Wattage Calculator

This solar panel wattage calculator allows you to calculate the recommended solar panel wattage according to the energy consumption of your household appliances.



Solar Panel Wattage Calculator

How Many Watts is a 400W Solar Panel? A 400-watt solar panel is rated to produce 400 watts of power under ideal standard test conditions. In practical ...



Solar Panel Wattage Calculator

This solar panel wattage calculator allows you to calculate the recommended solar panel wattage according to the energy consumption of ...

How Many Solar Panels Do I Need To Power a House ...

A peak sun hour is when the intensity of sunlight (known as solar irradiance) averages 1,000 watts per square meter or 1 kW/m². In the US, the average ...



What is Solar Panel Wattage and Solar Panel Output?

Solar panel wattage is the maximum DC output a solar panel produces in a lab under standard test conditions. Explore how it differs from solar panel output, factors that ...



Solar Panel Wattage Explained: How Many Watts Do You Need?

On average, a solar panel produces around 150 to 200 watts per square meter. This can vary due to: Example: A 1.7 m² panel with 20% efficiency will produce about 340W in full ...



[Solar Panel Watts Per Square Meter Explained](#)

Learn how to measure solar panel efficiency using solar panel watts per square meter with this comprehensive guide.

[Solar Panel Output Calculator , Get Maximum Power ...](#)

Basic information about your solar panel system, including the total wattage. The type of solar panels you have installed. The efficiency ...



[How many square meters of space is required per kw ...](#)

The area required for each kilowatt (kW) solar panel system is approximately 5 to 10 square meters, depending on the panel efficiency and ...



Solar Panel Sizes and Wattage Explained

Additionally, you can compare pricing, brands and options by viewing solar kit sizes. Remember that you decide how many solar panels to ...

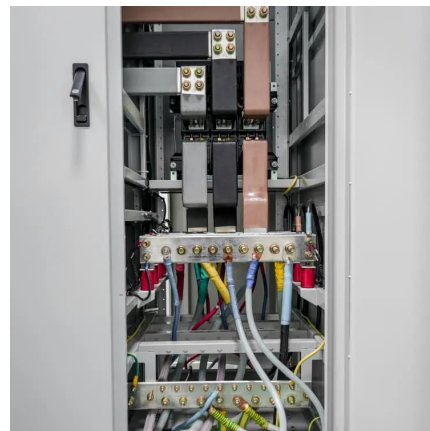


Solar Power per Square Meter Calculator

As per the recent measurements done by NASA, the average intensity of solar energy that reaches the top atmosphere is about 1,360 watts per square meter. You can ...

How Much Power Does a Solar Panel Produce , ESD , Solar Expert

Measure the size of a solar panel in square meters (m^2). Example: A panel is 1.6 m^2 . Multiply the size by 1,000. Example: $1.6 \text{ m}^2 \times 1,000 = 1,600$ watts. Multiply the result by the efficiency ...



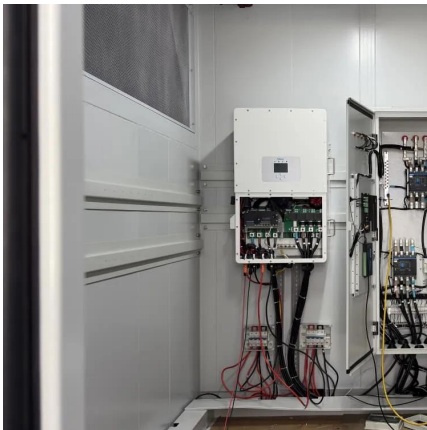
Solar Panel Output Calculator , Get Maximum Power Output

Basic information about your solar panel system, including the total wattage. The type of solar panels you have installed. The efficiency percentage of your inverter. Your ...



Solar Panel Wattage Calculator

How Many Watts is a 400W Solar Panel? A 400-watt solar panel is rated to produce 400 watts of power under ideal standard test conditions. In practical scenarios, the actual output may vary ...



[Solar Panel Dimensions Sizes and Wattage](#)

In terms of dimensions, a 300w monocrystalline or polycrystalline solar panel typically has a length of around 1.6 meters and a width of 1 meter. ...

[How Many Solar Panels Do I Need? Solar Panel Calculator](#)

How many solar panels do I need? Solar panels are a great way of reducing energy bills while lowering your carbon footprint. But before you can reap the rewards of solar power, ...



[How Many Solar Panels to Power a House , SolarLab](#)

The nominal power of a solar and photovoltaic panel The rated power is the maximum power that the panel is capable of producing under ...



Solar Panel Dimensions and Sizes: Complete Guide

There are three main sizes of solar panels to know: 60-cell, 72-cell, and 96-cell. For commercial and residential solar panels, the 60-cell and 72-cell solar ...



A Complete Guide To Solar Panel Output

What is the solar panel output? All solar panels are rated by the amount of DC (direct current) power they produce under standard test conditions. Solar panel output is expressed in units of ...

Contact Us

For catalog requests, pricing, or partnerships, please visit:
<https://www.motheopreprimary.co.za>