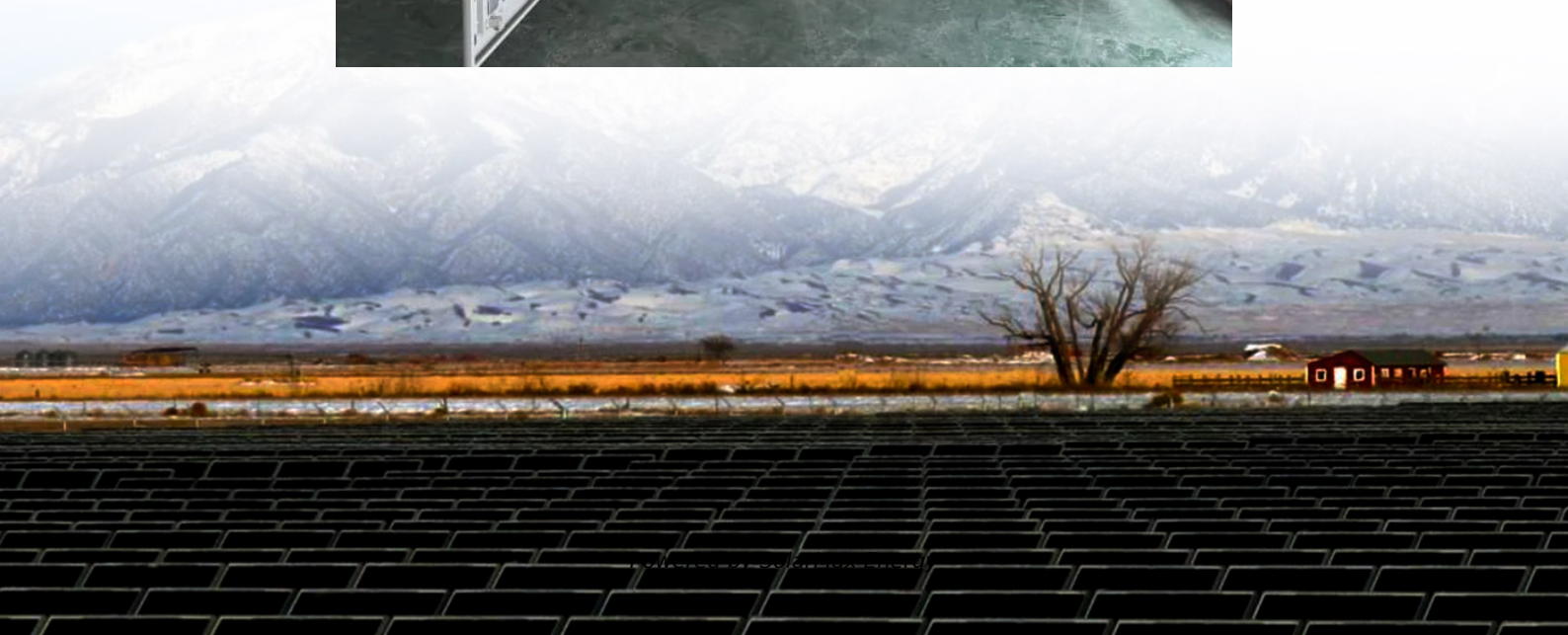


# **How many watts does a 48v inverter carry**





## Overview

---

To calculate the appropriate inverter size for a 48V battery system, you need to determine the total wattage of the devices you plan to power. The formula is:  $\text{Inverter Size (Watts)} = \text{Total Load (Watts)} / \text{System Voltage (48V)}$ . How many amps in a 48 volt inverter?

Now, maximum amp draw (in amps) =  $(1500 \text{ Watts} \div \text{Inverter's Efficiency (\%)}) \div \text{Lowest Battery Voltage (in Volts)} = (1500 \text{ watts} / 95\%) / 20 \text{ V} = 78.9 \text{ amps}$ . B. 100% Efficiency In this case, we will consider a 48 V battery bank, and the lowest battery voltage before cut-off is 40 volts. The maximum current is,  $= (1500 \text{ watts} / 100\%) / 40 = 37.5 \text{ amps}$ .

What are the different solar inverter sizes?

Solar generators range in size from small generators for short camping trips to large off-grid power systems for a boat or house. Consequently, inverter sizes vary greatly. During our research, we discovered that most inverters range in size from 300 watts up to over 3000 watts. In this article, we guide you through the different inverter sizes.

Can a 48V inverter work with a 12V battery?

A 48V inverter can work with four 12V batteries as long as the total input matches the inverter's requirement. Ensure that the batteries are correctly connected to the inverter.

How much power does an inverter need?

The continuous power requirement is actually 2250 but when sizing an inverter, you have to plan for the start up so the inverter can handle it. Third, you need to decide how long you want to run 2250 watts. Let's say you would like to power these items for an eight-hour period.

How many watts can a 5000-watt inverter power?

A 5000-watt inverter can produce 5000 watts of power per hour to run



appliances. It is sufficient to power several high-end household appliances at the same time, but you may not be able to use all of them at once. Instead, connect one appliance at a time while using multiple devices simultaneously.

How to choose a power inverter?

Second, select an inverter. For this example, you will need a power inverter capable of handling 4500 watts. The continuous power requirement is actually 2250 but when sizing an inverter, you have to plan for the start up so the inverter can handle it. Third, you need to decide how long you want to run 2250 watts.



## How many watts does a 48v inverter carry

---



### [What will a 5000W Inverter Run? Heavy Load](#)

A 5000 watts inverter can power several heavy electronic appliances. The watts requirement of each household appliance should be calculated before you connect them to the ...

### **Inverter Amp Draw Calculator**

It determines how many devices you can power and how long your inverter can function. In this article, let's explore the inverter amp draw calculator for 1000W, 1200W, and ...



### [What can 6200W 48V inverter carry? - ANENJI](#)

For off-grid homes, a 6200W 48V solar inverter can provide sufficient power for daily activities, including lighting, cooking, and operating ...

### [What Can a 4000 Watt Inverter Run - Complete Guide](#)

Discover what a 4000 watt pure sine wave inverter can run, including definitions, applicable equipment, appliance operating hours, ...



## Solar Panel Size Calculator

Use our solar panel size calculator to find out the ideal solar panel size to charge your lead acid or lithium battery of any capacity and voltage. ...



## Can I Run a Fridge Off an Inverter?

A fridge with 600 running watts likely has a 1800 surge watt, so a 2000W inverter is the minimum needed. A typical 1000W inverter has a surge watt capacity of 2000W, so it might be able to ...



## [Connecting 3000W 12V Pure Sine Wave Inverter to Battery](#)

A 48V 3kW inverter would be much more useful to expand. I would discourage any one from EVERY installing more than 1kW inverter at 12V or 2kW at 24V. you can reuse your charge ...







## What Size Inverter Do I Need?

To get a total watt estimate for all of the items you plan on powering with your inverter, check this convenient estimator. This useful measurement tool can ...



## [How Many Batteries Do I Need For a 1000 Watt Inverter](#)

You may have a question, how many batteries do I need to run a 1000 watt inverter? In this article, we are going to discuss the required number of batteries for inverters. ...

## Amps to Watts Converter

To convert amps (electrical current) to watts (electrical power) at a fixed voltage, you can use the equation:  $\text{watts} = \text{amps} \times \text{volts}$ . Simply multiply ...



## [The Only Inverter Size Chart You'll Ever Need](#)

During our research, we discovered that most inverters range in size from 300 watts up to over 3000 watts. In this article, we guide you through the different inverter sizes.



## Understanding Battery Capacity and Inverter Compatibility

How Long Can a 100 Ah Battery Run a 1000W Inverter? To estimate how long a battery can run an inverter, we need to consider the power draw and the battery's capacity. ...

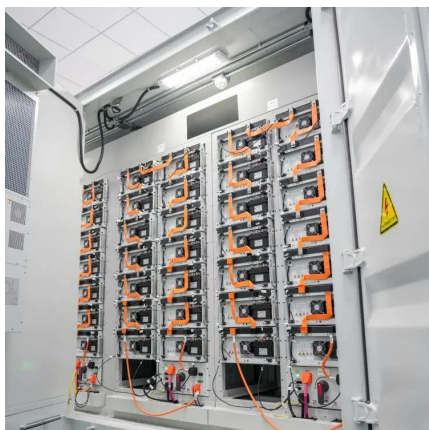
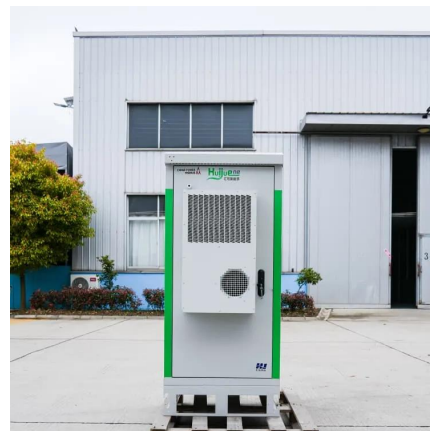


### [What can 6200W 48V inverter carry? - ANENJI](#)

For off-grid homes, a 6200W 48V solar inverter can provide sufficient power for daily activities, including lighting, cooking, and operating basic household appliances.

## What Solar Panel Size Do I Need to Charge a 48V Battery?

A 100ah 48V battery holds 4800 watts, so you need solar panels that can produce at least that amount. 3 x 350W solar panels can charge the battery in 5 hours. Assuming each panel ...



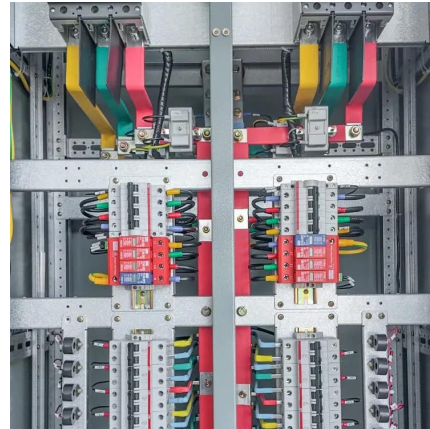
## 48V Inverter: The Ultimate Guide to Efficient and Scalable Power

If your peak usage is 3,000 watts, you'll want a 48V inverter rated at least 20-25% higher to handle surge power comfortably--so something around 3,600-4,000 watts would be ...



## [The Only Inverter Size Chart You'll Ever Need](#)

It determines how many devices you can power and how long your inverter can function. In this article, let's explore the inverter amp draw ...



## [How many watts does a 48v solar panel carry? , NenPower](#)

For instance, a 48V solar panel rated at 300 watts would yield a theoretical maximum output of 6.25 amps ( $300 \text{ watts} / 48\text{V}$ ). However, actual outputs may vary ...

## [What will a 5000W Inverter Run? Heavy Load](#)

A 5000 watts inverter can power several heavy electronic appliances. The watts requirement of each household appliance should be ...



## [Calculate Battery Size For Any Size Inverter \(Using ...](#)

So I have made it easy for you, use the calculator below to calculate the battery size for 200 watt, 300 watt, 500 watt, 1000 watt, 2000 ...





## Lithium (LiFePO4) Battery Runtime Calculator

Note: If the load capacity is mentioned in watts, make sure it should not exceed the total watt-hour (battery Ah x Battery volts) capacity of the ...



## How Many Batteries can Be Connected To An Inverter?

An inverter is only as good as the power source. Discover how many batteries you can connect to an inverter and get the most out of it.

## Lento 3.5 KVA 48v Hybrid Solar Inverter (Mppt Type)

Q. What can a 3.5 KVA 24V inverter carry? The 3.5KVA/24V Pure Sine Wave Inverter can support a maximum of two 12v/200Ah batteries and is compatible with charge controllers for ...



## **About The 3.5kva & 4kva Solar System: Number Of Batteries, ...**

The 3.5kva and 4kva 48v solar energy system gets its title from the capacity of the inverter. It simply means the inverter can carry loads up to its recommended maximum ...



## How many watts does a 48v solar panel carry?

For instance, a 48V solar panel rated at 300 watts would yield a theoretical maximum output of 6.25 amps (300 watts / 48V). However, actual ...



## **What Solar Panel Size Do I Need to Charge a 48V Battery?**

To charge a 48V battery, your solar panels must have the right voltage and power. The current, capacity and watts have to be the right match.



## **Calculate Battery Size For Any Size Inverter (Using Our Calculator)**

So I have made it easy for you, use the calculator below to calculate the battery size for 200 watt, 300 watt, 500 watt, 1000 watt, 2000 watt, 3000 watt, 5000-watt inverter



## **How Do You Calculate the Appropriate Inverter Size for a 48V ...**

To calculate the appropriate inverter size for a 48V battery system, you need to determine the total wattage of the devices you plan to power. The formula is: Inverter Size ...



## How Many Batteries & Solar Panels for 10KW Inverter ...

With the inverter size determined, the steps to match components to the 10kW inverter for optimal system performance will be clear and ...



## **What Size Inverter Do I Need?**

To get a total watt estimate for all of the items you plan on powering with your inverter, check this convenient estimator. This useful measurement tool can save you time and give you an ...

## **Mercury 5.5kVA Solar Hybrid Inverter System: 8x 300W Solar ...**

The Mercury 5.5kva Solar Hybrid Inverter MPPT 48v Complete Inverter System with 8x 300w mono solar panels is a powerful and reliable solution that can carry a wide range of electrical ...



## **Contact Us**

---

For catalog requests, pricing, or partnerships, please visit:  
<https://www.motheopreprimary.co.za>