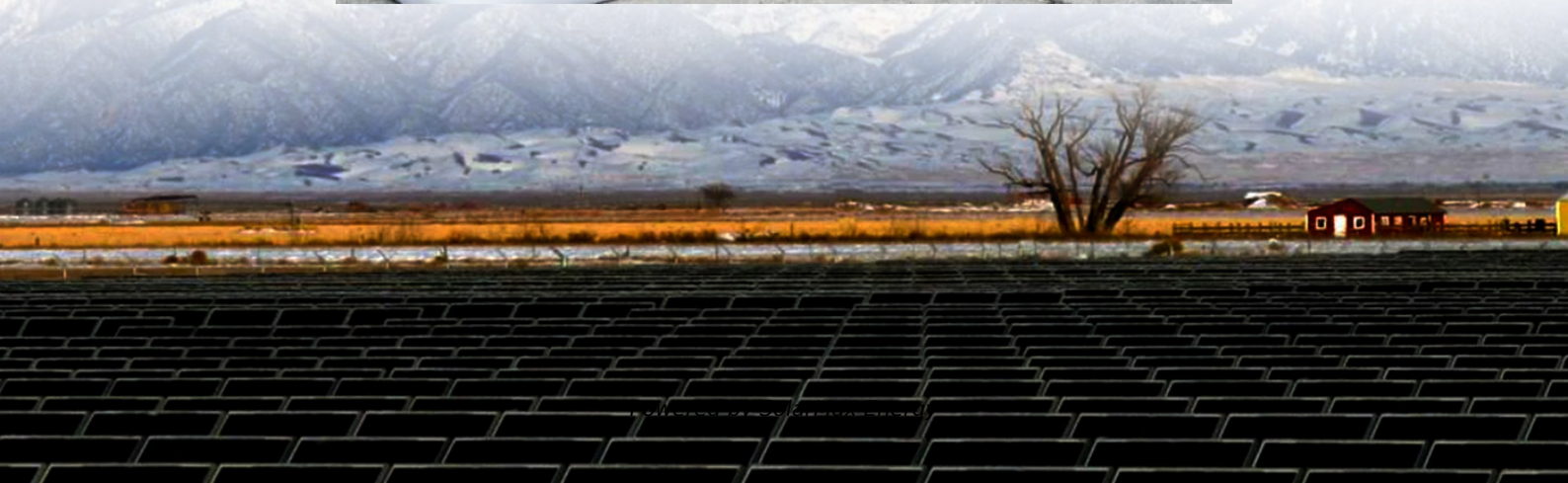


How many watts of photovoltaic panels are suitable for a 100A battery





Overview

To charge a 12V 100Ah lithium battery from full discharge in five peak sun hours, use about 310 watts of solar panels with an MPPT charge controller. With a PWM charge controller, you need around 380 watts of solar panels. These figures help ensure efficient charging of the battery. How many Watts Does a solar panel charge a 100Ah battery?

A solar panel that is generally used to charge a 100Ah battery is around 300 watts. Assuming you receive about 5 hours of sun daily, a 300-watt solar panel will generate around 1,500 watts per day, conveniently charging your 100Ah battery.

How long does it take to charge a 100 watt solar panel?

It takes 5-6 hours to fully charge a 100ah battery depending on how depleted it is. That scenario works if there are the aforementioned hours of sunlight, otherwise the numbers change. While you can get a 240 watt solar panel now and charge that battery, you may want to learn how to calculate solar panel size for any battery capacity.

How many watts a solar panel to charge a lithium battery?

You need around 1600-2000 watts of solar panels to charge most of the 48V lithium batteries from 100% depth of discharge in 6 peak sun hours with an MPPT charge controller. What Size Solar Panel To Charge 120Ah Battery?

.

How much power does a 100 watt solar panel produce?

Solar Panels Efficiency during peak sun hours: 80%, this means that a 100 watt solar panel will produce 80 watts during peak sun hours. [Click here to read more.](#) There are no devices drawing power from the battery during the charging process.

What size solar panel do I Need?



Given the calculations above, you would need a solar panel size of approximately 141 watts for a 12V 100Ah lead-acid battery and a 225-watt panel for a 12V 100Ah lithium battery. Similarly, to charge a 24V 100Ah lead-acid battery from 50 percent to full in a single day, you would need a 282-watt solar panel.

How many watts of solar panels do I Need?

You need around 800-1000 watts of solar panels to charge most of the 48V lead-acid batteries from 50% depth of discharge in 6 peak sun hours with an MPPT charge controller. You need around 1600-2000 watts of solar panels to charge most of the 48V lithium batteries from 100% depth of discharge in 6 peak sun hours with an MPPT charge controller.



How many watts of photovoltaic panels are suitable for a 100A batt



[How Many Solar Panels for Amp Service \(100 Amp ...](#)

How to calculate solar panel's size for Amp service Solar panels run at their 100% capacity under ideal sunlight conditions (Direct Sunlight, ...

[What Size Charge Controller for 100W, 500W and ...](#)

What Size Charge Controller for 1000W Solar Panel? A 1000W solar panel with 24-volt battery will require a 40-41-amp charge controller. ...



[400W Solar Panel Kit \(DIY\): What Size Battery, ...](#)

In this guide, you'll learn, how many batteries, What size charge controller, what size inverter & what size cable you'll need for a 400-watt solar ...

[How many solar panels are needed for a 12V 100Ah ...](#)

So, 1200VAh will be equal to 1200 Watt Hour of power hence for the charging of a 12 V, 100Ah battery you will require solar panels that can ...



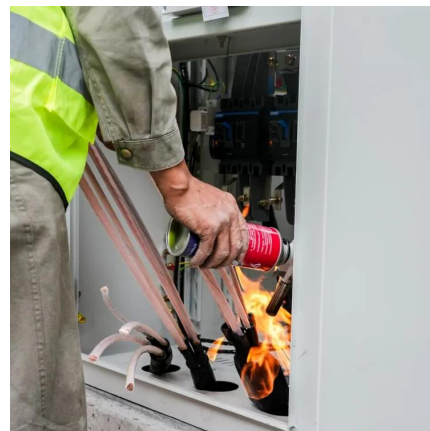
How Many Solar Panels to Charge a 100Ah Battery: Size, Watts, ...

If you receive about five peak sunlight hours per day, a 100-watt panel can produce around 500 watt-hours. To fully charge a 100Ah battery, which typically requires ...



How Much Solar to Charge a 100Ah Battery: Panel ...

To charge a 12V 100Ah lithium battery from a 100% depth of discharge in five peak sun hours, you need about 310 watts of solar panels ...



How Many Solar Panels Can a Charge Controller Handle?

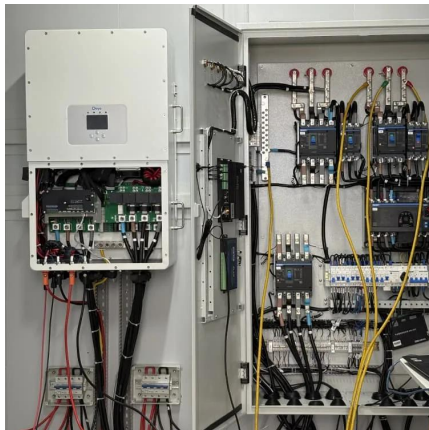
The max charge current indicates the battery size that can be charged. The max voltage current indicates how many solar panels can be connected in a series. If you're serious about using ...





Solar Panel Size Calculator

The answer to the question above is 240 watts of power. This assumes it is a 12V battery with 6 hours of sunlight available plus 20% extra watts to compensate for energy loss. It takes 5-6 ...

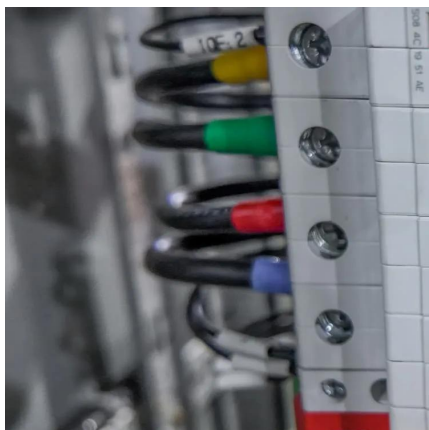


How many solar panels are needed for a 12V 100Ah battery?

So, 1200VAh will be equal to 1200 Watt Hour of power hence for the charging of a 12 V, 100Ah battery you will require solar panels that can generate 1200VA in 5 to 8 hours. ...

How Many Batteries are Needed for a 100W, 500W and 1000W Solar Panel?

To determine the number of batteries needed for an 800-watt solar panel system, you should consider the size of the batteries and the power requirements of the system. Also ...



[What Size Solar Panel To Charge 100Ah Battery?](#)

To fully charge a 100Ah 12V lithium battery using these 10 peak sun hours of sunlight, you would need a 108-watt solar panel. Practically, you would use a ...



How Many Solar Panels for 100Ah Battery? Sizing, Wattage, and ...

To charge a 12V 100Ah lithium battery from full discharge in five peak sun hours, use about 310 watts of solar panels with an MPPT charge controller. With a PWM charge ...



[What size charge controller for a 200W solar panel?](#)

What size charge controller for a 200W solar panel? In general, if your 200W solar panel and battery bank are both rated at 12 Volts (nominal), the charge controller should be ...

[What Size Solar Panel to Charge 100Ah Battery?](#)

Find out what size solar panel you need to charge a 100Ah battery -- including lithium (LiFePO4) and lead acid batteries -- at your desired speed.



[How Many Solar Panels to Charge a 100ah Battery?](#)

The answer to the question above is 240 watts of power. This assumes it is a 12V battery with 6 hours of sunlight available plus 20% extra watts to compensate for energy loss. It takes 5-6 ...



What Size Solar Panel to Charge 100ah Battery: The ...

A solar panel that is generally used to charge a 100Ah battery is around 300 watts. Assuming you receive about 5 hours of sun daily, a 300 ...



What Size Solar Panel To Charge 100Ah Battery? (Calculator

To fully charge a 100Ah 12V lithium battery using these 10 peak sun hours of sunlight, you would need a 108-watt solar panel. Practically, you would use a 100-watt solar panel, and in a little ...

How Much Solar Panel Is Required to Charge a 100Ah Lithium ...

To charge a 100Ah lithium battery, you typically need a solar panel system rated between 200 to 400 watts. This estimation accounts for factors such as sunlight availability, ...



How Much Solar Panel Is Required to Charge a 100Ah Lithium Battery?

To charge a 100Ah lithium battery, you typically need a solar panel system rated between 200 to 400 watts. This estimation accounts for factors such as sunlight availability, ...



What Size Solar Panel to Charge 100Ah Battery?

As a result, we need 2 x 120-watt, 2 x 100-watt, or 4 x 50-watt to cover your 180W solar panel to charge a 100Ah battery. Some recommended solar panels: 100 watt solar panels, foldable ...

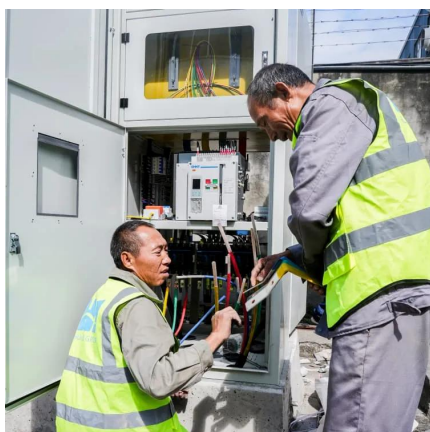
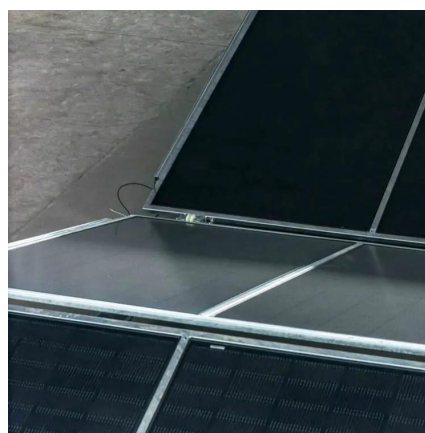


How Much Solar to Charge a 100Ah Battery: Panel Size, Watts, ...

To charge a 12V 100Ah lithium battery from a 100% depth of discharge in five peak sun hours, you need about 310 watts of solar panels with an MPPT charge controller. If you ...

How to Calculate Solar Panel and Battery Size for Your Energy ...

Unlock the secrets to effectively calculating solar panel and battery sizes with our comprehensive guide. This article demystifies the technical aspects, offering step-by-step ...



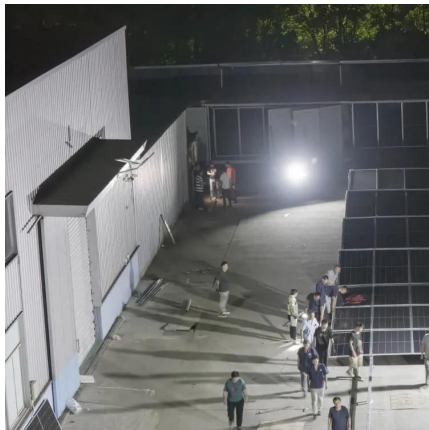
What Size Solar Panel to Charge 100ah Battery: The ...

A solar panel that is generally used to charge a 100Ah battery is around 300 watts. Assuming you receive about 5 hours of sun daily, a 300-watt solar panel will generate around ...



What Size Solar Panel to Charge 100Ah Battery?

Number of solar panels needed = $280 \div 100 = 2.8 \approx 3$ So, you will need 3 solar panels to charge a 100Ah battery. How Is the Solar Panel Size ...



How Many Watts Solar Panel Can Charge 100Ah Battery: A ...

To effectively charge a 100Ah battery, you'll generally need at least 120 watts of solar panel power. This is based on a typical daily energy consumption of around 600Wh, ...

MPPT Solar Charge Controllers Explained

Solar Charge Controllers are one of the most affordable and effective devices used to charge battery systems using solar. We explain how a MPPT charge controller works and ...



How Long To Charge 12V Battery With 100-Watt Solar ...

12V Battery Charging Time Calculator (With 100-Watt Solar Panels) Here is an easy-to-use calculator that helps you determine the charging time. You simply ...



Solar Panel Size Calculator

Use our solar panel size calculator to find out the ideal solar panel size to charge your lead acid or lithium battery of any capacity and voltage. For example, 50ah, 100ah, ...



Contact Us

For catalog requests, pricing, or partnerships, please visit:
<https://www.motheopreprimary.co.za>