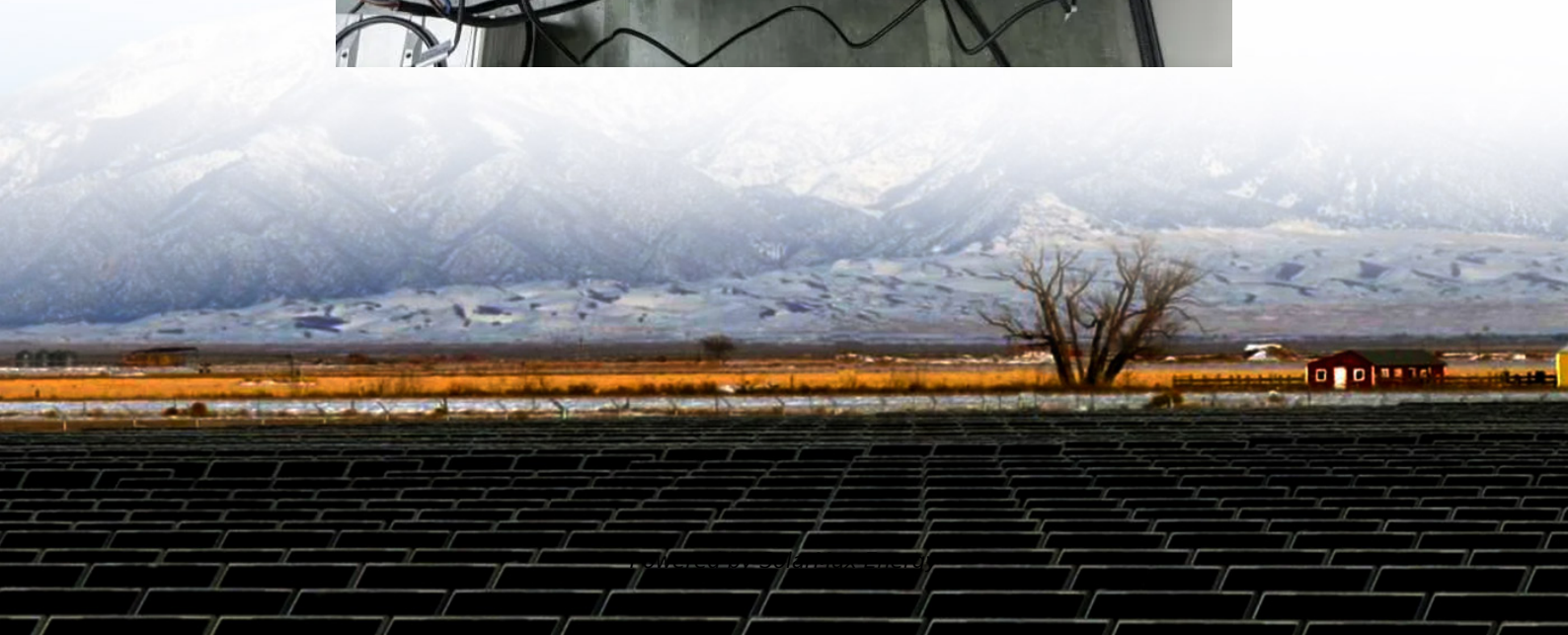


How many watts of solar panels can I use with a 60v battery





Overview

You need a 210 watt solar panel to fully charge a 12v 60ah lithium (LiFePO4) battery from 100% depth of discharge in 5 peak sun hours using a PWM charge controller. Read the below post to find out how fast you can charge your battery. How many watts a solar panel to charge a battery?

You need around 360 watts of solar panels to charge a 12V 100ah Lithium (LiFePO4) battery from 100% depth of discharge in 4 peak sun hours with an MPPT charge controller. What Size Solar Panel To Charge 50Ah Battery?

.

How many amps can a 60 watt solar panel charge?

A 60 watt solar panel can charge one 50ah battery in 10 hours. It can generate 3 to 5 amps an hour or 20-25 amps a day, depending on the weather and system efficiency. The calculation is total watts per day / volts = battery amp hour capacity. The charge time depends on the weather, efficiency of the system and battery discharge level.

What size solar panel to charge 12V battery?

You want a solar panel that will charge your battery in 16 peak sun hours. To find out what size solar panel you need, you'd simply plug the following into the calculator: Turns out, you need a 100 watt solar panel to charge a 12V 100Ah lithium battery in 16 peak sun hours with an MPPT charge controller.

How many batteries can a 400 watt solar panel charge?

As we can see, a 400-watt solar panel will need 2.7 peak sun hours to charge a 100Ah 12V lithium battery. If we presume that we get 5 peak sun hours per day, we can actually fully charge almost two 100Ah batteries (or one 200Ah battery).

How many watts of solar panels do I Need?



You need around 800-1000 watts of solar panels to charge most of the 48V lead-acid batteries from 50% depth of discharge in 6 peak sun hours with an MPPT charge controller. You need around 1600-2000 watts of solar panels to charge most of the 48V lithium batteries from 100% depth of discharge in 6 peak sun hours with an MPPT charge controller.

Can a 60W solar panel charge a 12V battery?

A 60W solar panel can charge a 25ah 12V battery in one day, assuming 5 hours of sun is available. This is the ideal scenario and does not account for system energy losses which can cause the panel to produce less than its rated output. Cloudy skies combined with system energy loss could drop output to 3 amps an hour.



How many watts of solar panels can I use with a 60v battery



[Solar Panel Size Calculator: What Size Panel Do I ...](#)

You need around 200-400 watts of solar panels to charge many common 12V lithium battery sizes from 100% depth of discharge in 5 peak sun ...

Solar Panel Ratings Explained

However, since the power output is directly linked to Solar Irradiance (W/m^2), which changes with the time of day, weather, and location, ...



[How many watts of solar panels are needed for a 60v ...](#)

When assessing the wattage of solar panels necessary for a 60V battery, the energy consumption level must be analyzed. This encompasses ...



[How to charge the Ryobi 18v and 40v batteries](#)

If I understand correctly I would need at least 40v+ of solar to be able to charge a 40v battery. I think that means hooking up two 24v solar panels in series so that I get a ...



Solar Panel To Battery Ratio (Kw + Watts)

Let's look at how to choose the battery for a solar panel. A good general rule of thumb for most applications is a 1:1 ratio of batteries and watts, or slightly more if you live near ...



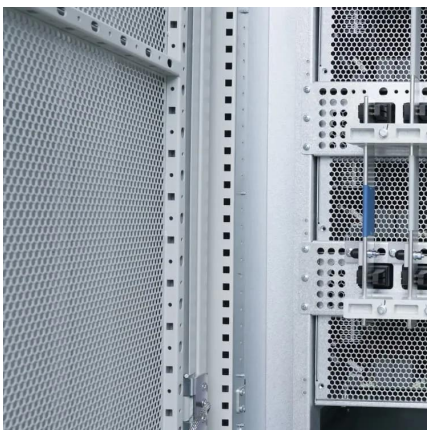
Confused about how much solar I can use

I bought a Renogy Rover Elite, 20 amp, MPPT solar charge controller. The manual shows: Max solar input voltage is 100VDC. Max solar input power is 12v @ 260w - 24v @ ...



What Size Solar Panel To Charge 60Ah Battery?

You need a 210 watt solar panel to fully charge a 12v 60ah lithium (LiFePO4) battery from 100% depth of discharge in 5 peak sun hours using a ...





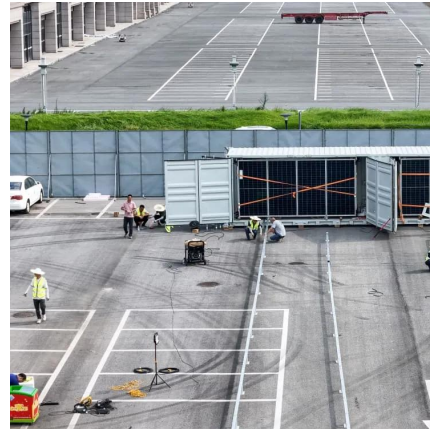
Solar Panel Size Calculator

Here is a chart of how much electricity solar panels have to add to 100Ah batteries (12V, 24V, 48V lithium, deep cycle, and lead-acid batteries), based ...



MPPT charge controller calculator: Find the right solar charge

To select a charge controller, you'll need to calculate the maximum amount of current (in Amps) that the MPPT should be able to output. This max output current value is ...



[How Many Batteries Can a 60W Solar Panel Charge?](#)

Is your 60W solar panel capable of charging your battery? Easy to understand calculations show you how many batteries you can really charge.



[The New EcoFlow Delta 2 Tested & Reviewed](#)

Higher solar input - The old Delta maxed out at 400W solar input and/or 10A, the MPPT solar charge controller in the Delta 2 can handle up to ...



Solar Panel Wattage Calculator

A solar panel wattage calculator can help optimize your solar power system for maximum efficiency and cost-effectiveness. This calculator considers ...



[What All Can a 60-Watt Solar Panel Power?](#)

In this short article, we'll cover what all can a 60-Watt solar panel can power single-handedly. We'll also talk about information for setting up a 60-Watt solar system along with the ...

[Can You Connect Any Solar Panel To A Portable ...](#)

We know that you can charge a portable power station/solar generator with solar panels, but does any solar panel work or does it have to ...



[What Size Solar Panel To Charge 100Ah Battery? \(Calculator](#)

Here is a chart of how much electricity solar panels have to add to 100Ah batteries (12V, 24V, 48V lithium, deep cycle, and lead-acid batteries), based on these two factors: Alright, let's take a ...



Solar Panel Size Calculator

Use our solar panel size calculator to find out the ideal solar panel size to charge your lead acid or lithium battery of any capacity and voltage. For example, 50ah, 100ah, ...



[Solar Panel Size Calculator: What Size Panel Do I Need?](#)

You need around 200-400 watts of solar panels to charge many common 12V lithium battery sizes from 100% depth of discharge in 5 peak sun hours with an MPPT charge ...

[PWM calculator: How to easily choose the right PWM ...](#)

In standard test conditions (STC), the highest current a solar panel can produce is the Short-Circuit Current (Isc for short) specified by the ...



What Size Solar Panel To Charge 60Ah Battery? + Calculator

You need a 210 watt solar panel to fully charge a 12v 60ah lithium (LiFePO4) battery from 100% depth of discharge in 5 peak sun hours using a PWM charge controller.



How to Calculate Solar Panels Needed to Charge Batteries: A ...

Unlock the potential of solar energy with our comprehensive guide on calculating the number of solar panels needed to charge batteries. Understand key factors such as daily ...



[SOLIX F3800 Only 60V Max PV Input??? : r/anker](#)

Interesting response here: 9. Max voltage input? When using a portable solar panel to recharge the F3800, the max input is 60v. but when connecting the F3800 with your rooftop solar panel ...

[RYOBI 60-Watt Premium Solar Panel RYI60SP](#)

Maximize the amount of light the panels capture using the freely adjustable kickstand or the (4) secure grommets. The RYOBI 60 Watt Solar Panel is backed by the RYOBI 3-Year ...



How many watts of solar panels are needed for a 60v battery

When assessing the wattage of solar panels necessary for a 60V battery, the energy consumption level must be analyzed. This encompasses the total daily energy usage ...



How many watts for 60 amp tri star?

If PWM, you need to match panels to battery voltage, they can only be in parallel, and your PV input. Those panels are likely 60 cell panels and aren't really suitable for any ...



MPPT charge controller calculator: Find the right solar ...

To select a charge controller, you'll need to calculate the maximum amount of current (in Amps) that the MPPT should be able to output. This max ...

[Solar Panel and Battery Sizing Calculator](#)

A Solar Panel and Battery Sizing Calculator is an invaluable tool designed to help you determine the optimal size of solar panels and batteries required to meet your energy ...



[Solar Battery Charge Time Calculator \(12v, 24v, 48v\)](#)

Use our solar battery charge time calculator to find out how long it will take to recharge your battery using solar panels.



Solar Panel Sizes and Wattage Explained

Additionally, you can compare pricing, brands and options by viewing solar kit sizes. Remember that you decide how many solar panels to ...



400W Solar Panel Kit (DIY): What Size Battery, ...

In this guide, you'll learn, how many batteries, What size charge controller, what size inverter & what size cable you'll need for a 400-watt solar ...

Contact Us

For catalog requests, pricing, or partnerships, please visit:
<https://www.motheopreprimary.co.za>