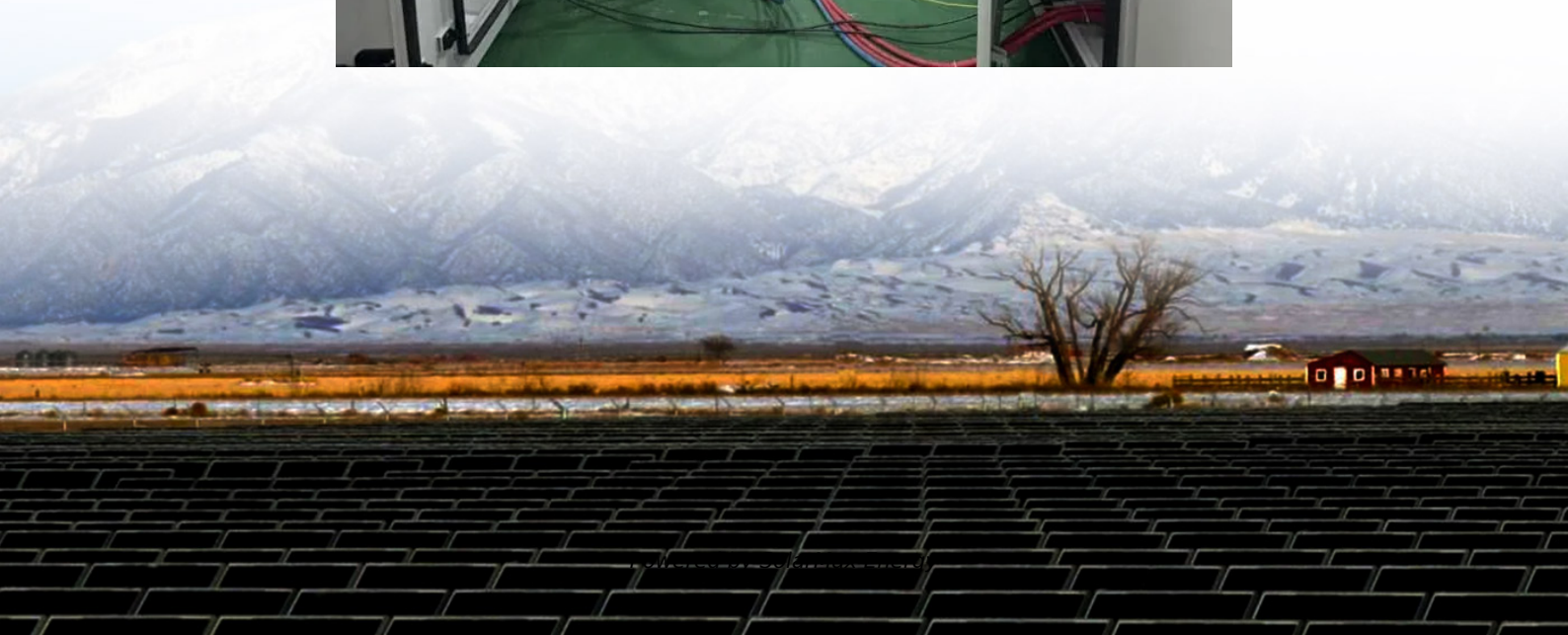


How many watts of solar panels can I use with an 8ah battery





Overview

Note: If you already have a solar panel and want to know how long it will take to charge your battery, use our solar battery charge time calculator.

1. Enter battery Capacity in amp-hours (Ah): For a 100ah battery, enter 100. If the battery capacity is mentioned in watt-hours (Wh), divide Wh by the battery's voltage (v). 2. Enter battery.

Here's a chart about what size solar panel you need to charge different capacity 12v lead-acid and Lithium (LiFePO4) batteries in 6 peak sun hours using an MPPT charge controller.

Follow these 6 steps to calculate the estimated required solar panel size to recharge your battery in desired time frame.

Here's a chart about what size solar panel you need to charge different capacity 24v lead-acid & Lithium (LiFePO4) batteries in 6 peak sun hours using an MPPT charge controller.

A 300-watt solar panel or three 100-watt panels are recommended. This setup ensures efficient charging and meets energy calculation needs effectively. It is essential to consider the solar charge controller as well. How many watts a solar panel to charge a battery?

You need around 360 watts of solar panels to charge a 12V 100ah Lithium (LiFePO4) battery from 100% depth of discharge in 4 peak sun hours with an MPPT charge controller. What Size Solar Panel To Charge 50Ah Battery?

.

How many solar panels do I need to charge a 50Ah battery?

You need around 180 watts of solar panels to charge a 12V 50ah Lithium (LiFePO4) battery from 100% depth of discharge in 4 peak sun hours with an MPPT charge controller. Related Post: How Long Will A 50Ah Battery Last?

.



How many watts a solar panel to charge 130ah battery?

You need around 380 watts of solar panels to charge a 12V 130ah Lithium (LiFePO4) battery from 100% depth in 5 peak sun hours with an MPPT charge controller. What Size Solar Panel To Charge 140Ah Battery?

.

How many watts of solar panels do I Need?

You need around 800-1000 watts of solar panels to charge most of the 48V lead-acid batteries from 50% depth of discharge in 6 peak sun hours with an MPPT charge controller. You need around 1600-2000 watts of solar panels to charge most of the 48V lithium batteries from 100% depth of discharge in 6 peak sun hours with an MPPT charge controller.

Can a 300 watt solar panel charge a battery?

Thus, a 300-watt solar panel setup can effectively charge your battery under ideal conditions. Using a solar charge controller is crucial. This device regulates voltage and current coming from the solar panels to the battery, preventing overcharging.

Can a solar panel charge a 12V battery?

It's generally unsafe, as solar panels can output higher voltages (up to 20V), risking overcharging. Using a charge controller mitigates this risk and maintains battery health. How long does it take to charge a 12V battery with a 100W panel?



How many watts of solar panels can I use with an 8ah battery



How Many Solar Panel Watts for 12V Battery Charging: A ...

To charge a 12V battery with a capacity of 100 amp-hours in five hours, you need at least 240 watts from your solar panels (20 amps x 12 volts). A 300-watt solar panel or three ...

How Many Watts of Solar Panel Do You Need to Charge a Deep Cycle Battery?

To charge a deep cycle battery efficiently, you need a solar panel with sufficient wattage based on the battery's capacity and energy consumption. A typical 12V 100Ah deep ...



How Many kWh Does A Solar Panel Produce Per Day?

If we know both the solar panel size and peak sun hours at our location, we can calculate how many kilowatts does a solar panel produce per day using this equation: Daily kWh Production ...



What Size Solar Panel To Charge 400ah Battery?

6 steps to calculate IDEAL solar panel size for 400ah battery There are many ways to calculate the size of solar panels for your battery but ...



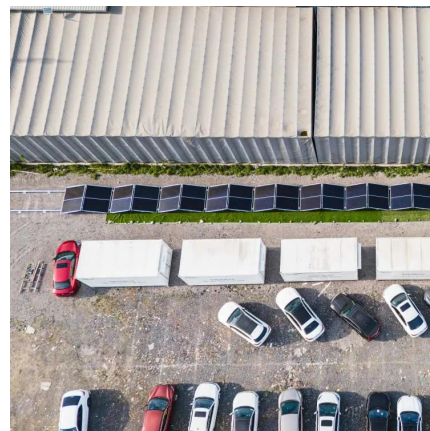
[Help for beginner with small cabin solar](#)

Does anyone have suggestions for what type of battery (acid v lithium), size of charge controller, and how many panel we should get. We're ...



What Size Solar Panel Do I Need to Charge a 12v Battery?

For instance, a 100Ah battery would typically require a 150 to 200-watt solar panel to ensure efficient charging. Let's break down the calculation process with a practical example. Consider ...



[Solar Panel and Battery Sizing Calculator](#)

A Solar Panel and Battery Sizing Calculator helps you determine the optimal size of solar panels and batteries required to meet your energy needs.





[The Complete Off Grid Solar System Sizing Calculator](#)

Using your daily energy usage and Peak Sun Hours, and assuming a system efficiency of 70%, the calculator estimates the Wattage required for your off-grid solar system's ...



[Size Matters: Choosing Solar Panels to Keep Your ...](#)

Never run out of battery power boondocking! Size solar panels perfectly to keep RV batteries charged. Calculate needs, choose solar kits, ...

Solar Panel Size Calculator

You need around 180 watts of solar panels to charge a 12V 50ah Lithium (LiFePO4) battery from 100% depth of discharge in 4 peak sun hours with an MPPT charge controller.



[12v Battery for Solar Panel \(Best Charge for Each Amp\)](#)

How big of a solar panel do I need to charge a 12v battery? For a 12v battery, you'll ideally need a panel of 200 watts to charge a 100ah battery ...





MPPT charge controller calculator: Find the right solar ...

MPPT Size Calculator The MPPT calculator has 6 input fields that will describe your solar energy system: 1- Solar panel wattage: This is the ...

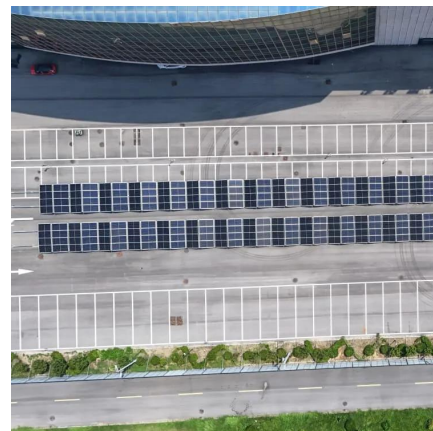


Solar Panel Wattage Calculator

A solar panel wattage calculator can help optimize your solar power system for maximum efficiency and cost-effectiveness. This calculator considers ...

Calculating Battery Requirements for an 8000W Solar Inverter

Use this formula to calculate your required battery capacity: Required Battery Capacity (Ah) = (Energy Consumption per Hour (Wh) × Backup Time (hours)) / (Discharge ...



[What Size Solar Panel To Charge 200Ah Battery?](#)

How many solar panels do I need to charge a 200Ah battery in 5 hours? you need 350 watt solar panels to fully charge a 12v 200ah lead acid ...



How Many Batteries Do You Need For a 300W Solar Panel?

A 300W solar panel needs batteries to store power. Use this guide to find out how many batteries you need with simple calculations.



What Size Solar Panel Do I Need to Charge a 12v ...

For instance, a 100Ah battery would typically require a 150 to 200-watt solar panel to ensure efficient charging. Let's break down the calculation process with a ...

Solar Panel and Battery Sizing Calculator

A Solar Panel and Battery Sizing Calculator helps you determine the optimal size of solar panels and batteries required to meet your energy ...



What Size Solar Panel Do You Need for 12V Battery Charging?

For these bigger systems, combine our 300W or 400W panels for the ideal setup, or use our space-saving flexible panels when conventional rigid panels won't fit.



[Solar Panel Size Calculator for 12V Battery Charging](#)

Use our Solar Panel Size Calculator to determine the perfect panel for charging your 12V battery. Input capacity, voltage, and sun hours for results.



How to Calculate Solar Panel, Battery, and Inverter Size

In general, your inverter capacity should be approximately the same size as the total wattage of your solar panels.



[The Complete Off Grid Solar System Sizing Calculator](#)

Using your daily energy usage and Peak Sun Hours, and assuming a system efficiency of 70%, the calculator estimates the Wattage required for ...



How many watts of solar panels does 12v8ah match , NenPower

Generally, aiming for 20-30 watts of solar panel output can suffice for reliable recharging of a 12V 8Ah battery. Given the average of five peak sun hours daily, a single panel ...



[Solar Panel Size Calculator for 12V Battery Charging](#)

Use our Solar Panel Size Calculator to determine the perfect panel for charging your 12V battery. Input capacity, voltage, and sun hours for results.



[GUIDE: How To Charge an E-Bike With a Solar Panel](#)

Most e-bikes come with a 36 or 48-volt battery, and you should use that capacity to determine how many solar panels you need to fully charge the ...



How Many Watt Solar Panel to Charge 12 Volt Battery: Calculate ...

Thus, a 300-watt solar panel setup can effectively charge your battery under ideal conditions. Using a solar charge controller is crucial. This device regulates voltage and current ...



[How to Charge a Battery from Solar Panels](#)

Heading to the complete guide on charging a battery from solar panels with two methods. The energy from solar panels is stored in solar ...



Contact Us

For catalog requests, pricing, or partnerships, please visit:
<https://www.motheopreprimary.co.za>