

How many watts of solar power can be generated in 80 square meters





Overview

A solar power per square meter calculator takes details regarding these factors and then gives the accurate output generated by the solar panel per square meter.

What is solar panel watts per square meter (W/M)?

Solar panel watts per square meter (W/m) measures the power output of a solar panel based on its size. Compare solar panels to see which generates most electricity per square meter. A higher W/m value means a solar panel produces more power from a given area. This can help you determine how many solar panels you need for your energy needs.

How much electricity do solar panels produce per square foot?

We have the result: Tesla roof panels produce 18.79 watts per square foot. Compared to the 17.25 watts per square foot, they produce 8.9% more electricity. That's quite impressive, actually. Bottomline: As we have seen, the average watts per square foot that solar panels produce is 17.25 watts per square foot.

What is a solar power per square meter calculator?

It also includes wiring, inverter, charge controller, and battery bank (if used). A solar power per square meter calculator takes details regarding these factors and then gives the accurate output generated by the solar panel per square meter. After this, it's time to learn about solar panel output calculators.

How many Watts Does a solar panel use?

Here, the amount of the force of the electricity is represented by volts. The aggregate amount of energy used is expressed in amps (amperes). Output ratings on most solar panels range between 250 watts to 400 watts. 1. Number of Solar Cells The most common categorization of solar cells is in 60-cell solar panels and 72-cell solar panels.

How much energy does a 100 watt solar panel produce?



The daily energy production of a 100-watt solar panel is influenced by the amount of sunlight it receives. On average, you can expect: Assuming 5 peak sun hours: $100\text{W} \times 5 \text{ hours} = 500 \text{ watt-hours (0.5 kWh)}$ per day. In optimal conditions: The panel may produce up to 600-700 watt-hours (0.6-0.7 kWh) daily.

How do you calculate solar panel output per square foot?

Divide the solar panel wattage (for 100W, 150W, 170W, 200W, 220W, 300W, 350W, 400W, 500W) by the solar panel area to get the solar panel output per square foot for a specific solar panel. Here is the equation: Solar Output Per Sq Ft = Panel Wattage / Panel Area. Sounds reasonable, right?



How many watts of solar power can be generated in 80 square meters

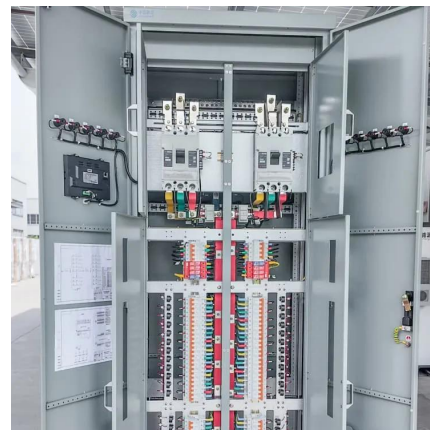


How to Calculate Solar Panel kWh

How to Calculate Solar Panel kWh: To find the power in kWh, consider panel size, efficiency, and the output per square meter of panels.

Photovoltaics

W stands for watts, kW for kilowatts. The p at Wp and kWp means 'peak'. Wp and kWp are the units for the nominal power. This is the power of the system at ...

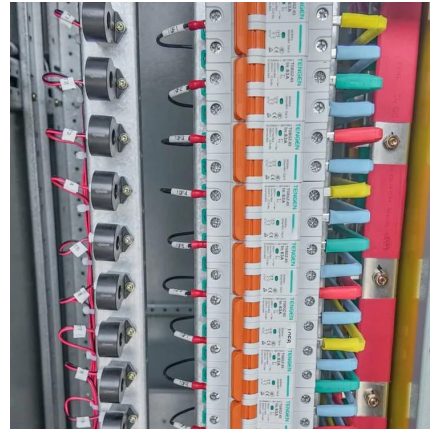


How Many Solar Panels Can Fit on One Acre of ...

A single acre can hold as many as 2,000 solar panels. This shows the huge potential of solar energy. It means we can use land efficiently for ...

Photovoltaics

Calculator for the power per area or area per power of a photovoltaic system and of solar modules. You can enter the size of the modules and click from top to ...



[Solar Panel Output per Square Meter: Efficiency ...](#)

When panel efficiency reaches 30%, a 100m² roof could generate 50,000kWh/year - enough to power 20 average homes. The solar revolution ...



[The Ultimate Guide to Solar Panel Output](#)

Solar panel output is the prime indicator of the solar-powered system's effectiveness. The higher the solar panel power output is, the more it ...



[Solar Panel Output Calculator , Get Maximum Power ...](#)

By inputting your solar panel system's total size and the peak sun hours specific to your location, this calculator simplifies the complex process ...





Solar Power per Square Meter Calculator

A solar power per square meter calculator takes details regarding these factors and then gives the accurate output generated by the solar panel per square meter.



How Much Power Does a Solar Panel Produce , ESD , Solar Expert

Discover how much power a solar panel can produce with ESD. Learn about efficiency, output, and benefits of solar energy systems.



Photovoltaics

Calculator for the power per area or area per power of a photovoltaic system and of solar modules. You can enter the size of the modules and click from top to bottom, or omit some ...



Solar Panel Watts Per Square Foot: 'We (Finally) Did The Math'

Here we have a definitive answer; on average, solar panels produce 17.25 watts per square foot. We are going to look at how Tesla's solar roof compares to this average. First of all, let's show ...



[Solar Panel Size Estimator Calculator](#)

The Solar Panel Size Estimator Calculator is a tool designed to help you determine the appropriate size of solar panels needed for your ...



Solar Energy Per Square Meter

Solar Energy Per Square Meter Solar energy per square meter, or "watts per square meter" (W/m^2), is a measure of the amount of solar energy that is received per unit ...

Solar Panel Wattage Calculator

How Many Watts is a 400W Solar Panel? A 400-watt solar panel is rated to produce 400 watts of power under ideal standard test conditions. In practical scenarios, the actual output may vary ...



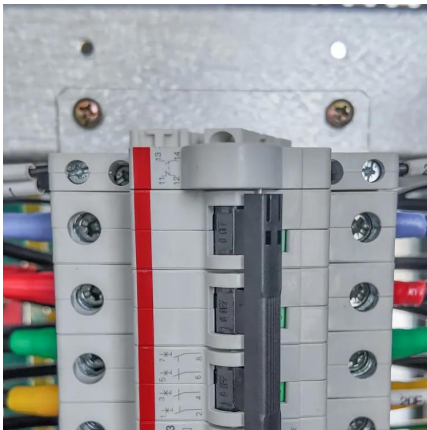
Solar Panel Output Calculator , Get Maximum Power Output

By inputting your solar panel system's total size and the peak sun hours specific to your location, this calculator simplifies the complex process of estimating the energy your solar ...



Solar Energy Calculator

A Solar Energy Calculator is your go-to tool for figuring out how much solar power you can generate based on your specific conditions. Think of it as your ...



[How Many Houses Can A Solar Farm Power?](#)

4 days ago · An acre of solar panels can power 37 to 38 homes annually, depending on factors like location and panel efficiency. Solar panel efficiency is an essential factor determining the ...

Solar Panel Watts Per Square Foot: 'We (Finally) Did The Math'

Check the standard solar panel size (area) and the output wattage of the whole panel. Divide the solar panel wattage (for 100W, 150W, 170W, 200W, 220W, 300W, 350W, 400W, 500W) by the ...



Solar Energy Calculator

A Solar Energy Calculator is your go-to tool for figuring out how much solar power you can generate based on your specific conditions. Think of it as your personal solar wizard, helping ...



How much electricity does a 80 square meter solar ...

The electricity produced by an 80 square meter solar panel depends on various factors, but typically, it can generate between 10 to 20 ...

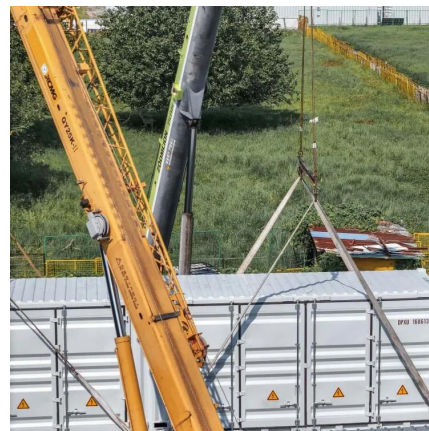


How much electricity can one square meter of solar panels generate?

Therefore, approximately one square meter can generate around 150W-170W of electricity. What power factors will affect the power generation of solar panels?

How many watts does solar energy produce per ...

The average solar energy generation is approximately 150 to 250 watts per square meter under optimal conditions, 2. However, this can vary ...



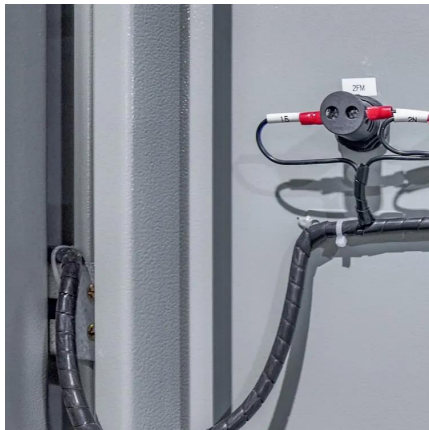
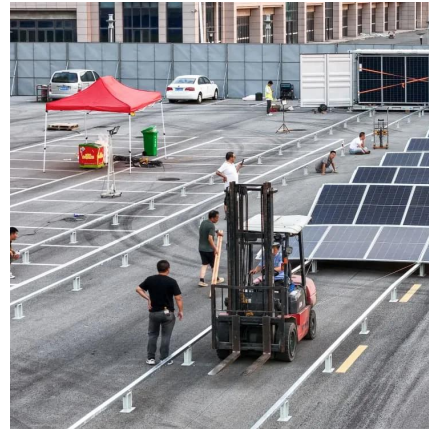
Solar Panel Watts Per Square Meter Explained

Learn how to measure solar panel efficiency using solar panel watts per square meter with this comprehensive guide.



How much electricity can one square meter of solar ...

Therefore, approximately one square meter can generate around 150W-170W of electricity. What power factors will affect the power generation ...



How much solar power can my roof generate?

Below is a chart comparing solar generation potential based on roof size, assuming all of the same metrics as before: 400-watt solar panels, 20-square-foot panels, and ...

Solar Panel Output per Square Meter: Efficiency Factors & Future ...

When panel efficiency reaches 30%, a 100m² roof could generate 50,000kWh/year - enough to power 20 average homes. The solar revolution isn't coming; it's already here. Solar panels ...



How much electricity does a 80 square meter solar panel produce?

The electricity produced by an 80 square meter solar panel depends on various factors, but typically, it can generate between 10 to 20 kilowatt-hours (kWh) per day, ...



How Many Solar Panels Are Needed to Run a House?

A small home, such as one with 800 square feet of living space, is likely to require between 8 and 10 solar panels to power the home based on ...



Solar Panel Wattage Calculator

How Many Watts is a 400W Solar Panel? A 400-watt solar panel is rated to produce 400 watts of power under ideal standard test conditions. In practical ...



Power Per Square Meter Calculator

How can Power Per Square Meter impact the efficiency of solar panels? Higher values indicate more power generation per unit area, meaning more efficient use of space and ...



How Much Energy Do Solar Panels Produce Per ...

But on average, a typical solar panel will produce around 100 watts of power per square foot. So if you have a 1000 square foot roof, you ...



Contact Us

For catalog requests, pricing, or partnerships, please visit:
<https://www.motheopreprimary.co.za>