

How much electricity does a 5G base station consume every day





Overview

Today we see that a major part of energy consumption in mobile networks comes from the radio base station sites and that the consumption is stable. We can also see that even in densely deployed netw.

How much power does a 5G base station use?

“A 5G base station is generally expected to consume roughly three times as much power as a 4G base station. And more 5G base stations are needed to cover the same area,” -IEEE Spectrum, 5G’s Waveform Is a Battery Vampire.

Is 5G more energy efficient than 4G?

Although the absolute value of the power consumption of 5G base stations is increasing, their energy efficiency ratio is much lower than that of 4G stations. In other words, with the same power consumption, the network capacity of 5G will be as dozens of times larger than 4G, so the power consumption per bit is sharply reduced.

Which network consumes the most power in 5G?

Also, NextGalliance published a report with the below figure clearly illustrates that the RAN consumes the most power. Although RAN power consumption is reduced in 5G, it is still over 50% of the total 5G network infrastructure consumption. Another trend worth noting is the rise in data center power consumption in 5G.

Why does 5G use so much power?

The main factor behind this increase in 5G power consumption is the high power usage of the active antenna unit (AAU). Under a full workload, a single station uses nearly 3700W. This necessitates a number of updates to existing networks, such as more powerful supplies and increased performance output from supporting facilities.

Why does a ran consume more power than a 4G network?

Despite improvements in energy efficiency, the RAN continues to consume



more power than any other part of the network. This is due largely to new technology like mmWave transceivers and MIMO antennas, all of which require more power. Power Consumption of 4G and 5G Networks How can 5G reduce power consumption Vs. 4G.

How much energy does a 5G small cell BS consume?

Simulation results reveal that more than 50% of the energy is consumed by the computation power at 5G small cell BS's. Moreover, the computation power of 5G small cell BS can approach 800 watt when the massive MIMO (e.g., 128 antennas) is deployed to transmit high volume traffic.



How much electricity does a 5G base station consume every day

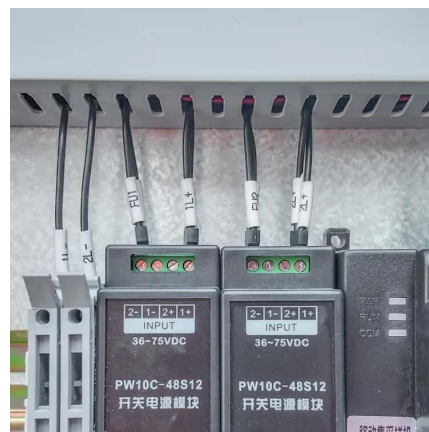


How Much Power Does 5G Base Station Consume? , Huijue ...

Have you ever wondered how much energy our hyper-connected world is consuming? 5G base stations, the backbone of next-gen connectivity, now draw 3-4 times more power than their 4G ...

5G base stations consume too much electricity. How can we ...

Through smart circuit breaker equipment, 5G energy saving is combined with AI artificial intelligence to improve the accuracy of power consumption prediction for each base ...



Energy Consumption of 5G, Wireless Systems and the Digital ...

"A 5G base station is generally expected to consume roughly three times as much power as a 4G base station. And more 5G base stations are needed to cover the same area," -IEEE ...

How much power does 5G consume?

One 5G base station is estimated to consume about as much power as 73 households (6), and 3x as much as the previous generation of base stations ...



Why does 5g base station consume so much power ...

In addition to other small modules that use electricity, the power consumption of a single 5G base station is generally around 3700 watts, ...

Why does 5g base station consume so much power and how to ...

In addition to other small modules that use electricity, the power consumption of a single 5G base station is generally around 3700 watts, which is about three times that of 4G ...



Energy Consumption of 5G, Wireless Systems and ...

"A 5G base station is generally expected to consume roughly three times as much power as a 4G base station. And more 5G base stations are needed to cover ...



Why 5G cell towers go down when there is power ...

Say there's a power outage during extreme weather or maintenance events. Cell towers have batteries and backup generators that run on diesel, propane. ...



Power Consumption of 4G and 5G Networks

With many of the core network services moving to the cloud in 5G, we see a reduction in the energy consumption of core network elements from 4G to 5G and an increase ...

The power supply design considerations for 5G base stations

An integrated architecture reduces power consumption, which MTN Consulting estimates currently is about 5% to 6 % of opex. This percentage will increase significantly with ...



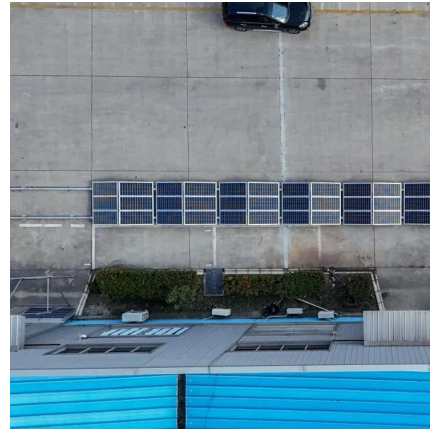
Power Consumption Calculator: How To Calculate ...

The power consumption calculator calculates how units of electricity (kilowatt-hours or kWh) a device draws per hour, per day, per week, and month. How to ...



Front Line Data Study about 5G Power Consumption

The power consumption of a single 5G station is 2.5 to 3.5 times higher than that of a single 4G station. The main factor behind this increase in 5G power consumption is the high power ...



How much power does a 5G base station consume? It is rumored ...

As the two leading companies in the construction of 5G base stations in China, Huawei and ZTE have previously announced the power consumption data of 5G equipment, ...

How much energy will 5G consume?. 5G networks ...

Example of base station energy consumption during idle mode signaling in LTE (top) and 5G NR (bottom). NR is configured to send signal ...



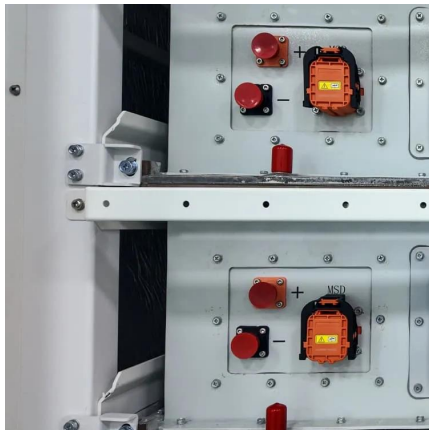
What is the Power Consumption of a 5G Base Station?

Ericsson has been able to innovate a 5G base station that consumes only 20% energy when the traffic is low compared to a normal setup. This achieves through advanced ...



Cradle to the Grave: Sustainability and the Life of a ...

More than 1,000 4G and 5G base stations are "born" every day inside Nokia's factory in Oulu, close to the Arctic Circle in northern Finland. ...

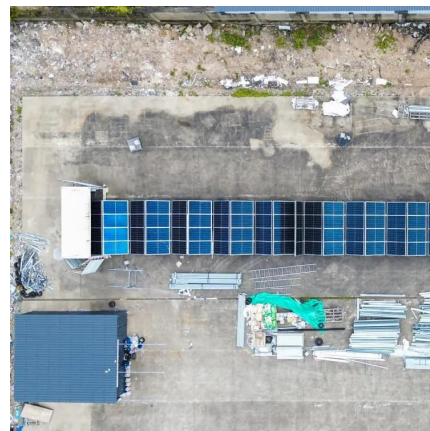


Power Consumption of 4G and 5G Networks

With many of the core network services moving to the cloud in 5G, we see a reduction in the energy consumption of core network elements from ...

What is 5G Energy Consumption?

5G Base Station Power Consumption: With each base station carrying at least 5X more traffic and operating over more frequency bands, 5G base station power consumption is at least twice ...



5G Infrastructure Costs: What Telcos Are Paying , PatentPC

How much does 5G infrastructure cost? See what telecom providers are investing in towers, spectrum, and network expansion.



A technical look at 5G energy consumption and performance

In this post, we explore the energy saving features of 5G New Radio and how this enables operators to build denser networks, meet performance demands and maintain low 5G ...



[5G towers: everything you need to know about 5G cell ...](#)

Are 5G towers safe? Has Covid-19 stopped the roll-out of 5G? How do 5G cell towers operate? Here we demystify 5G's most controversial ...

5G

5G deployment faces challenges such as significant infrastructure investment, spectrum allocation, security risks, and concerns about energy efficiency and ...



Does 5G require more electricity?

Energy consumption per unit of data (watt/bit) is much less for 5G than 4G, but power consumption is much higher. In the 5G era, the maximum energy consumption of a 64T64R ...



Does 5G require electricity?

One 5G base station is estimated to consume about as much power as 73 households (6), and 3x as much as the previous generation of base stations (5),(7). Takedown request , View ...



How much power does 5G consume?

One 5G base station is estimated to consume about as much power as 73 households (6), and 3x as much as the previous generation of base stations (5), (7). When base stations, data centers ...

Power Consumption of 4G and 5G Networks

The fact of Sustainability in mobile networks starts with power reduction and meeting net-zero goals, and as we know wireless networks ...



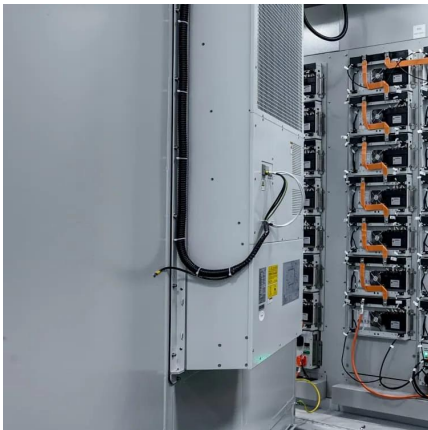
Power consumption based on 5G communication

At present, 5G mobile traffic base stations in energy consumption accounted for 60% ~ 80%, compared with 4G energy consumption increased three times. In the future, high-density ...



5G base station saves energy and reduces consumption

In 5G communications, base stations are large power consumers, and about 80% of energy consumption comes from widely dispersed base stations. It is predicted that by ...



Front Line Data Study about 5G Power Consumption

The power consumption of a single 5G station is 2.5 to 3.5 times higher than that of a single 4G station. The main factor behind this increase in 5G power ...

Contact Us

For catalog requests, pricing, or partnerships, please visit:
<https://www.motheopreprimary.co.za>