

# **How much power can the inverter use**





## Overview

---

A rule of thumb is that the total output load should be less than the inverter capacity. For example, if you have a 3000-watt inverter you can run up to 2500 watts of output load with it. As I have mentioned earlier you have to keep in mind the efficiency rate of your inverter before putting the load on it. That is all you need.

Our batteries store power in DC (Current current) but most of our household appliances require AC (Alternating current) Our batteries come in different voltages (12, 24, & 48v) But AC appliances required 120 volts (because our grid power comes in 120 volts). So an.

There are a few points to keep in mind before getting into calculation stuff, Which are the basics and you need to know.

To calculate how long will an inverter last on a battery using this formula  
$$\text{Battery capacity in watts} - 15\% \text{ (for 85 efficient inverters)} / \text{Output total load} = \text{Battery backup time on inverter}$$
  
let's assume that you have a 12v 100Ah lithium battery connected with a.

The next question which comes to mind that how long my inverter will last on load with a 12, 24, or 48v battery. To understand this first of all we need to know 1. What size battery is connected 2. Its type 3. total output load in watts

How much power does an inverter use?

But this amount may vary depending on the type of battery bank used and the types of loads connected to the inverter. Typically, in a no-load current, the energy drawn by the inverter is only 2 to 10 watts an hour. What Amount of Power is Wasted by Inverter?

Do not confuse the inverter's no-load current with the efficiency rating of the inverter.

How much power does a high frequency inverter use?

High frequency MOSFET drive switching is usually the dominate idle consumption but a poorly designed output PWM low pass filter can add to idle



losses by having a high reactive power factor load. Generally a 3 kW sinewave high freq inverter is 30 to 50 watts of full idle power. A high frequency inverter has two primary stages.

How to choose a power inverter?

Second, select an inverter. For this example, you will need a power inverter capable of handling 4500 watts. The continuous power requirement is actually 2250 but when sizing an inverter, you have to plan for the start up so the inverter can handle it. Third, you need to decide how long you want to run 2250 watts.

How many Watts Does a 10 watt inverter use?

For example, sometimes a radio connected to the inverter uses just 5 watts but the inverter itself consumes 10 watts. This is a complete waste of money and energy. Secondly, accumulation of no current load like imagine your inverter is left on 24 by 7. Now, with a 10-watt no-power draw rating, it is almost 70 watts per week that will be wasted.

What is the difference between a power inverter and a solar inverter?

Solar inverters or power inverters both have the same function with one slight difference. Solar inverters take direct current from solar panels and transfer the converted current to solar batteries. Whereas normal inverters take current from batteries and transfer the alternating current to the connected appliances.

How many watts in a 24V inverter?

Power drawn =  $24V * 0.4 = 9.6$  watts This formula and calculation are applicable to all inverters irrespective of their size. 12V or 24V is the only thing that will make the difference in the power consumed. Remember, the higher the voltage is the greater the no-load current will be.



## How much power can the inverter use

---



### How Much Power Does Solar Inverter Use and How to Create the ...

Learn how much power a solar inverter uses and get practical tips on designing the ideal solar power project. From understanding inverter efficiency to system sizing, this ...

### How Much Power Does An Inverter Draw With No Load?

To get an idea of whether the inverter is consuming more power than the load that is connected to it. For example, sometimes a radio ...



### How Much Power Does an Inverter Use on Standby?

Discover how much power inverters use on standby and save energy! Learn about reducing standby consumption and choosing efficient ...

### How Much Power Does a Solar Inverter Use: An ...

A single solar inverter can use as much as 40 watts. This is even when not in use or during the night. This fact shows how important it is to ...





## How Much Can I Run Off a 1000W Inverter? A Comprehensive ...

A 1000 watt inverter can supply power to devices that draw up to 1000 watts continuously, including small kitchen appliances, laptops, and power tools. Runtime depends ...



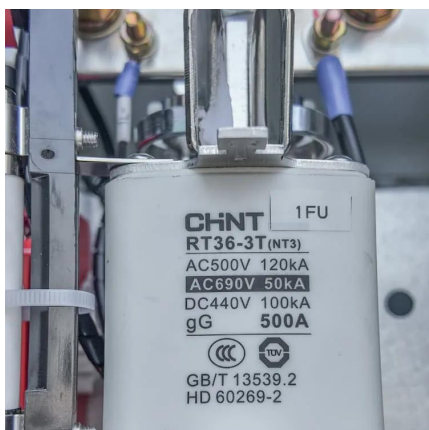
## How Much Power Does My Inverter Use? . Offroad Living

Calculate how much power your inverter uses with this simple guide. Discover best practices when it comes to preserving your inverter's power.



## Inverter Efficiency: Understanding How Much Power You're ...

Have you ever wondered how much power you're actually getting from your inverter? Many people think that once they connect their solar panels and batteries to an ...





## What will a 5000W Inverter Run? Heavy Load

A 5000 watts inverter can power several heavy electronic appliances. The watts requirement of each household appliance should be ...



## **Inverter Usage Calculator & Formula Online Calculator Ultra**

Inverters are essential components of many power backup systems, helping to convert DC power stored in batteries into AC power for household or commercial use. ...

## How much power does a solar inverter have? , NenPower

Understanding the power rating of a solar inverter is essential for assessing its efficiency and aptitude for meeting energy demands. The inverter power rating, typically ...



## How much power does a solar inverter have?

Understanding the power rating of a solar inverter is essential for assessing its efficiency and aptitude for meeting energy demands. The ...



## Are Large Inverters Less Efficient?

Use energy efficient appliances. Energy efficiency is crucial for inverters and solar power in general. If you plan to go full solar power, invest in energy efficient appliances first. Take care ...



## [How many solar panels can an inverter handle](#)

Inverter Capacity: The number of solar panels an inverter can handle is primarily determined by its power rating, usually measured in watts ...

## Can Air Conditioner Run On Inverter? , Smart AC Solutions

Yes, an air conditioner can run on an inverter, but several key factors must be considered for optimal performance. First, ensure that your air conditioner is specifically rated ...



## [How Much Energy Does A Solar Inverter Use](#)

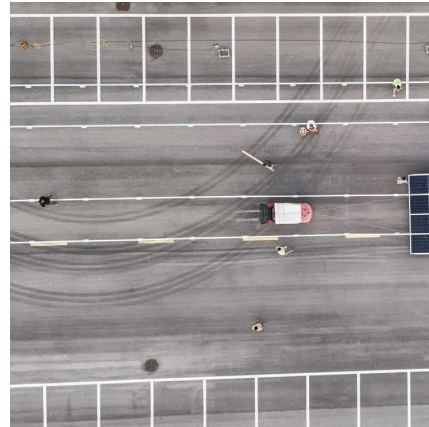
A solar inverter is a converter that converts or inverts the direct current (DC) energy produced by a solar panel, making it possible to power your home with solar energy. ...





## Matching inverter to battery

The key thing to remember is that Watts out of the inverter is roughly equivalent to Watts into the inverter. So if you have 2000W coming out of the inverter, you will have slightly ...



## How Much Energy Does A Solar Inverter Use

Solar inverters can consume up to 40 watts of power even when not in use, impacting the overall energy output of your solar system. In summary, a solar inverter is a ...

## How Many Solar Panels Can I Connect to My Inverter?

An inverter can run on solar power, but the panels must be the right size. Take the proper approach and get your inverter running now.



## **What Size Inverter Do You Need for Your Home? , Renogy US**

Final words Choosing the right size power inverter is crucial to make sure that your home backup power system is reliable and efficient enough to meet your energy requirements with an ...





## Inverter Efficiency: Understanding How Much Power You're ...

In simple terms, inverter efficiency refers to how well an inverter converts DC electricity into usable AC power. No inverter is 100% efficient--some energy always gets lost ...



## [How Much Power Does a Solar Inverter Use: An Overview](#)

A single solar inverter can use as much as 40 watts. This is even when not in use or during the night. This fact shows how important it is to know about inverter power use. ...

## What Will An Inverter Run & For How Long? (With Calculator)

So I'm gonna explain to you guys in simple words about what you can run on your any size inverter and what are the key point to keep in mind. And also how long your inverter ...



## How much power does an Inverter use just sitting there idling?

Hello, Quick question. I have a 24V 3000W pure sine wave inverter powering two 15A circuits. The inverter itself uses about 30W running a 500W load. There are some times ...



## How Much Power Does an Inverter Draw with No Load Connected?

A battery can be drained in a matter of days for example. Read on to find out how much power an inverter continues drawing from the battery when on standby and the tips that ...



## What Size Inverter Do I Need?

Finding the proper inverter size for your needs is as simple as adding together the necessary wattages of the items that you're looking to power.

## How Much Power Does An Inverter Draw With No Load?

To get an idea of whether the inverter is consuming more power than the load that is connected to it. For example, sometimes a radio connected to the inverter uses just 5 watts ...



## Inverter Power Draw: How Much Power Does an Inverter Use ...

According to the U.S. Department of Energy, modern inverters can have efficiency ratings between 80% to 95%. This means that if an inverter needs to deliver 1,000 watts of AC ...



## How much power does an Inverter use just sitting there idling?

Generally a 3 kW sinewave high freq inverter is 30 to 50 watts of full idle power. A high frequency inverter has two primary stages. First stage is high frequency DC to DC ...



## Contact Us

---

For catalog requests, pricing, or partnerships, please visit:  
<https://www.motheopreprimary.co.za>