

How much power does a 500wb inverter have





Overview

A rule of thumb is that the total output load should be less than the inverter capacity. For example, if you have a 3000-watt inverter you can run up to 2500 watts of output load with it. As I have mentioned earlier you have to keep in mind the efficiency rate of your inverter before putting the load on it. That is all you need.

Our batteries store power in DC (Current current) but most of our household appliances require AC (Alternating current) Our batteries come in different voltages (12, 24, & 48v) But AC appliances required 120 volts (because our grid power comes in 120 volts). So an.

There are a few points to keep in mind before getting into calculation stuff, Which are the basics and you need to know.

To calculate how long will an inverter last on a battery using this formula
Battery capacity in watts - 15% (for 85 efficient inverters) / Output total load =
Battery backup time on inverter let's assume that you have a 12v 100Ah lithium battery connected with a.

The next question which comes to mind that how long my inverter will last on load with a 12, 24, or 48v battery. To understand this first of all we need to know 1. What size battery is connected 2. Its type 3. total output load in watts

A 500W rating tells you how much power the inverter can deliver. This means it can easily handle things like charging laptops, running a small fan, or powering a portable DVD player. You can even use it for some small kitchen gadgets, just be careful not to overload it. How much power does a 500W inverter use?

The inverter itself uses about 30W running a 500W load. There are some times that there is no load. Does the inverter still consume the same amount of power then?

Or significantly less because it is proportional to the load?

It's hard to tell since my usage watt meters are downstream after the inverter. Thanks in advance.



How much power does a high frequency inverter use?

High frequency MOSFET drive switching is usually the dominate idle consumption but a poorly designed output PWM low pass filter can add to idle losses by having a high reactive power factor load. Generally a 3 kW sinewave high freq inverter is 30 to 50 watts of full idle power. A high frequency inverter has two primary stages.

What can a 600W inverter power?

A 600W inverter can power TV, led lights, computer, laptop, Ceiling Fan, Printer, Blender, Video Game Console, Curling Iron, Humidifier, Sewing Machine, & other appliances with up to 500 Watts of an input requirement.

What can 5000 watt inverter run?

5000w inverter can run appliances with up to 4500 Watts of an input requirement like Fridge, TV, microwave, Coffee Machine, Dishwasher, Freezer, Toaster, Central Air Conditioner (AC), Space Heater, Well Pump, Iron, Clothes Dryer, Washing Machine, Hair Dryer, Vacuum, Drill machine, etc.

How much power does a 12V inverter use?

For example: If you're running a 1500W inverter on your 12v battery with 1000 watts of total AC load. So your inverter will be consuming 83 amps ($\text{amps} = \text{watts/battery volts}$) from the battery for which you'll need a very thick cable. using a thin cable in this scenario can damage the inverter or you'll not be able to run your load.

Can a 500W inverter run a refrigerator?

A 500W inverter will do a great job at powering your USB devices and laptop, together with LED lights, a water circulation pump, and an electric fan. On top of that, it will easily run a small refrigerator/freezer. Related Reading: [How Do Off-Grid Inverters Work?](#)

What will a 700W inverter run?



How much power does a 500wb inverter have



[500 watt solar panel \(Everything you need to know\)](#)

How much energy does a 500W solar panel produce? Before we proceed, let's discuss the difference between power and energy. Power: ...

[How to Choose the Right Inverter Size for Your Home](#)

Choosing the right inverter size comes down to knowing your power needs, matching battery capacity, and prioritizing safety features.



[How long can I run the power inverter on my battery?](#)

Note: If you intend to use power tools for commercial use, or any load of 200W for more than 1 hour regularly (between battery recharging) we recommend installing an auxiliary battery to ...

How much power does an Inverter use just sitting there idling?

Generally a 3 kW sinewave high freq inverter is 30 to 50 watts of full idle power. A high frequency inverter has two primary stages. First stage is high frequency DC to DC ...



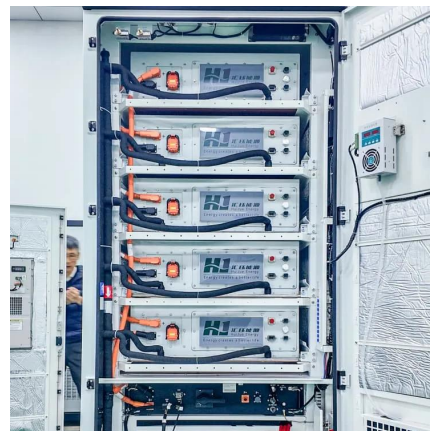
How Many Watts Does a Computer Use

How many watts does a computer use? Typical computers use between 50 to 300 watts of electricity based on their hardware configuration and usage. Laptops use fewer watts ...



[I Tested the Power of a 500 Watt Pure Sine Inverter](#)

However, when it comes to portable power, the options can be overwhelming. That's where the 500 Watt Pure Sine Inverter comes in. This compact yet powerful device has ...



[How Many Watt Inverter Do I Need?.. Click to Learn More](#)

A 500W inverter would be better than a 300W inverter to prevent the inverter from shutting off while starting the load. To avoid issues in the performance of an inverter and to ...





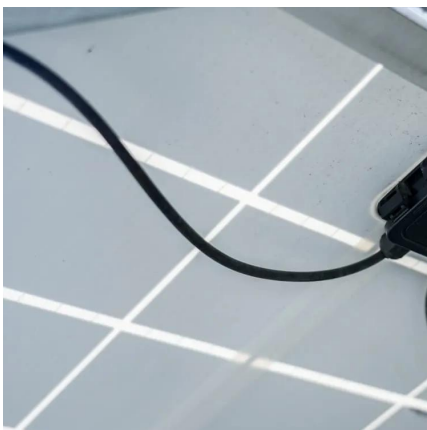
What Will a 500 Watt Solar Panel Run?

A 500 watt solar system provides plenty of power for any RV or off grid camp setup. But figuring out specifically what it can run is another matter. The answer will depend on how much power ...



Powering Starlink With An Inverter

I eventually settled on using a 500W PowerTech Pure Sine Wave Inverter from Jaycar. Initially I tried a Victron Phoenix 12/250 inverter. Even though it was rated for 400W ...



Best 500 Watt Power Inverter in 2022 (Reviews and Comparison)

Here, we will review five 500 watt power inverters, including the pros and cons of each one. Stay tuned for our top pick at the end. 1. Bestek 500W Power Inverter. The Bestek ...



How to Accurately Calculate the Current Draw for a 500W Inverter

To calculate current draw for a 500W inverter on a 12V system, use the formula: Current (A) = Power (W) / Voltage (V). Thus, Current = 500W / 12V = approximately 41.67A ...



Inverter Calculator

Change values in the boxes with arrows and the calculator will adjust to show you other system specifications: Inverter Input Inverter Power Rating Inverter ...



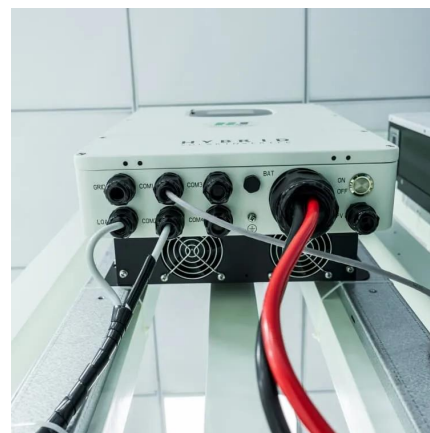
I Tested the Power of 500 Watts Inverter and Here's Why It's a ...

Not only does it claim to provide a significant amount of power, but it also offers convenience and versatility. In this article, I'll be diving into the world of 500 watts power inverters and ...



What Will An Inverter Run & For How Long? (With Calculator)

So I'm gonna explain to you guys in simple words about what you can run on your any size inverter and what are the key point to keep in mind. And also how long your inverter ...



[How Long Can a 500W Inverter Power Your Devices?](#)

How Long Can a 500W Inverter Power Your Devices? A 500W inverter's runtime depends on battery capacity, connected load, and efficiency. For example, a 100Ah 12V battery running a ...



[I Tested the Power of 500 Watts Inverter and Here's ...](#)

Not only does it claim to provide a significant amount of power, but it also offers convenience and versatility. In this article, I'll be diving into the world of 500 ...



[The Only Inverter Size Chart You'll Ever Need](#)

We have created a comprehensive inverter size chart to help you select the correct inverter to power your appliances.

[How much solar power should I expect from 500W ...](#)

Hi For almost six months now I have 10 panels of 500W with below specifications Model NS-500S6-32 Maximum Power at STC(Pmax) 500W ...



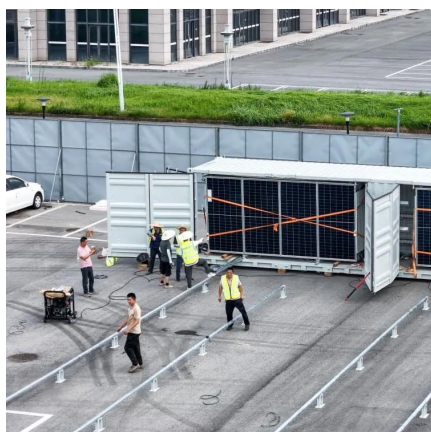
[How Many Amps Does an Inverter Draw?](#)

An inverter is a device that converts direct current (DC) to alternating current (AC) and is widely used in areas such as solar power, ...



Best 500W Pure Sine Wave Inverters: BESTEK vs. JARXIOKE

Power your essentials with a 500W pure sine wave inverter. Ideal for sensitive equipment. Explore the best options and get yours now!



What Can A 500 Watt Solar Panel Run? [Updated: August 2025]

If you're looking to run your home on solar power, you'll need to know how much a 500W solar panel can actually power. In this article, we'll cover what a 500W solar panel can ...



Best 500 Watt Power Inverter in 2022 (Reviews and ...)

Here, we will review five 500 watt power inverters, including the pros and cons of each one. Stay tuned for our top pick at the end. 1. Bestek ...



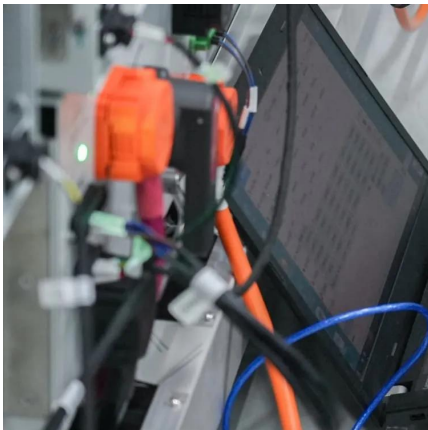
Inverter Amp Draw Calculator

It determines how many devices you can power and how long your inverter can function. In this article, let's explore the inverter amp draw calculator for 1000W, 1200W, and ...



How Long Will a Battery Last With an Inverter?

One of the most common concerns that irritate solar power system owners is the battery running duration. This is very important since it tells you ...



Inverter Amp Draw Calculator

It determines how many devices you can power and how long your inverter can function. In this article, let's explore the inverter amp draw ...

What Inverter Size is Best for a 100Ah Battery?

Understanding the Basics What is an Inverter? An inverter converts DC (Direct Current) power from your battery into AC (Alternating Current) power, which is used by most household ...



Contact Us

For catalog requests, pricing, or partnerships, please visit:
<https://www.motheopreprimary.co.za>