

How to adjust base station communication equipment





Overview

How do I install a base station CB system?

Base Station CB systems are not complicated to install, but there are a few things you should know. So, let's get into it. First, you need a radio system that works off of AC power. Most CB radios are designed for vehicles that are powered by DC 12-volt power systems.

Are base station CB systems complicated to install?

Base Station CB systems are not complicated to install, but there are a few things you should know. Get the down-and-dirty at Right Channel Radios. Free Shipping \$75+ and killer customer service.

What should I look for when choosing a base station?

There are two main things to watch out for when selecting a receiver to use as a base station. Firstly, the receiver must be able to output differential corrections (RTCM is strongly preferred).

How do I adjust the modulation on a CB radio?

The modulation should be adjustable via the body of the CB radio. Tweaking the modulation is a good way of maximizing power but you'll only want to up it to a certain degree. Make sure the sound of the radio isn't being distorted by the extent of your modulation. Adjust the squelch range.

How to set up a ham radio station?

When setting up a ham radio station, the location is essential. You must find a space that is comfortable to work in, has access to power (preferably both 120V and 240V AC), and is free from excessive noise or interference. This will help ensure optimal performance and a more enjoyable experience when engaging in amateur radio communication.

How do I tune a ham radio base station?



To begin tuning, select a band and frequency appropriate for your desired communication range. When operating a ham radio base station, consider using repeaters to extend the range of your signal. Repeaters are devices that receive a ham radio signal on a specific frequency, amplify it, and then retransmit it on a different frequency.



How to adjust base station communication equipment



[Types and Applications of Mobile Communication ...](#)

Mobile communication base station is a form of radio station, which refers to a radio transceiver station that transmits information between mobile ...

[MF/HF Equipment tests: how to do it and actions in ...](#)

Next you should try to test the DSC call with a ship station. Testing with ship station is similar to testing with coast station. We just need to change ...



Setting Up Your Ham Radio Station: A Step-by-Step Guide for ...

Get started with Ham Radio by setting up your station with our step-by-step guide for beginners. From equipment to antennas, we cover it all.

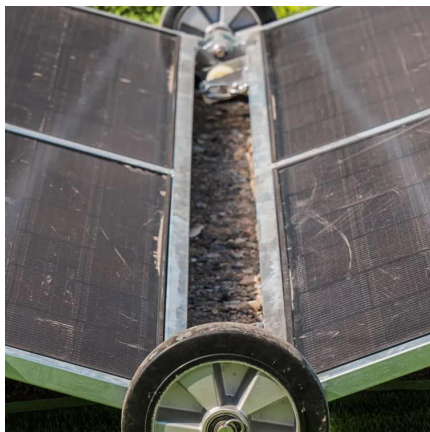
[How to set up a base station - Chapter 2: Equipment ...](#)

There are two main things to watch out for when selecting a receiver to use as a base station. Firstly, the receiver must be able to output differential corrections ...



Base station operation guidelines

This topic introduces the concept of base station operation, provides information to help you identify good setup locations, describes best practices for setting up the equipment, and ...



Satellite Ground Station Basics

Explore the fundamentals of satellite ground stations, including their architecture, receiving and transmitting processes, and key specifications.



Guide to Base Station Communications Equipment , Office of ...

The first section discusses the frequency bands available to law enforcement agencies and factors that affect coverage in communications between base and mobile stations. Advantages ...





[How to Set Up a Base Station CB System](#)

Base Station CB systems are not complicated to install, but there are a few things you should know. So, let's get into it. First, you need a radio system that works off of AC ...



How to set up a base station - Chapter 2: Equipment overview

There are two main things to watch out for when selecting a receiver to use as a base station. Firstly, the receiver must be able to output differential corrections (RTCM is strongly preferred).

[How to Set Up a Base Station CB System: A Complete ...](#)

This guide will walk you through the basic understanding of Base Station CB System, how to install them and how to do that right



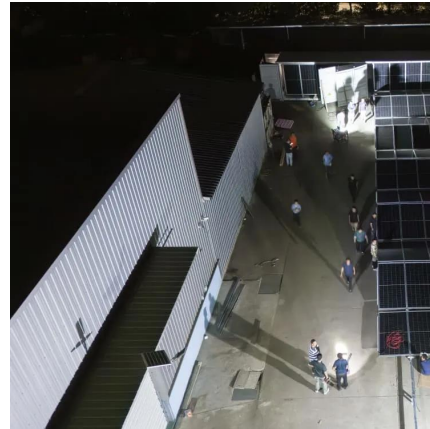
[How to Peak and Tune a CB Radio: 14 Steps \(with Pictures\)](#)

Learn to set up a base station CB radio for long-range communication. Explore key components and expert tips for clear, reliable signals.



ORWG Communications 101

Mission of CAP Communications The mission of the CAP Communications Program is to organize and maintain a reliable, nationwide, point-to-point, air-to-ground, and ground mobile radio ...



[Best Ham Radio Base Station Kits for Effective ...](#)

Explore the best ham radio base station kits for effective communication. Find top-rated options to enhance your amateur radio experience and connectivity.

[Equipment for Your Ham Radio Station](#)

Essential Equipment for a Ham Radio Station Setting up a ham radio station requires a few essential pieces of equipment. In this section, we will discuss ...



[How to Set Up a Base Station CB System](#)

Base Station CB systems are not complicated to install, but there are a few things you should know. So, let's get into it. First, you need a radio ...



Base Stations

Backhaul Connection: The backhaul connection links the base station to the core network in the mobile communication system. It provides for ...



[How to Peak and Tune a CB Radio: 14 Steps \(with Pictures\)](#)

Once your radio is set up, adjust the center modulation knob to increase your range without distorting the sound of the radio. Then, adjust the squelch knob on the left of the ...

[How to Set Up a Base Station CB System: A ...](#)

This guide will walk you through the basic understanding of Base Station CB System, how to install them and how to do that right



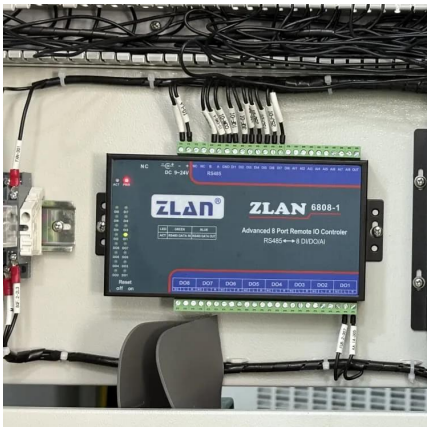
Types of radio communication equipment , AEROTHAI Business

The Air-to Ground radio system consists of the following components: 1. The Air-to-ground Base Station (A/G base station) is used for air-to-ground communications within a radius of 200 ...



Optimizing Base Station Configuration for RF Engineers

Learn how RF Engineers can optimize base station configuration in telecommunications using data analytics.



US9756676B2

A base station and a device to device (D2D) user equipment (UE), a transmission method, a report method and a resource adjustment method for a wireless communication system are ...



XCOM Aerial Dummies Guide.doc

Base station antennas - usually longer in length than standard 1/4 wave antennas, most base station antennas are 1/2 wavelengths being approximately 1.2 m long plus a base section. ...



How to Calibrate Your Land Surveying Equipment for Optimal ...

Positioning: Ensure that equipment like total stations or theodolites are stored in the correct orientation, typically with the base down. Check your equipment's manual for ...



[Setting Up Your Ham Radio Station: A Step-by-Step ...](#)

Get started with Ham Radio by setting up your station with our step-by-step guide for beginners. From equipment to antennas, we cover it all.

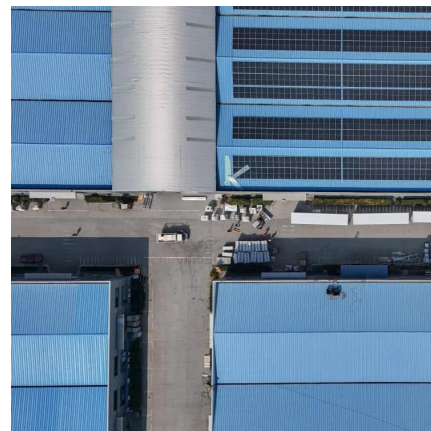


What is a Base Station?

The electromagnetic waves emitted by base stations and mobile phones are like air, filling us all around. Everyone knows mobile phones, ...

How Do You Set Up a Base Station Index: A Step-by-Step Guide

From understanding the concept of a base station index to configuring the necessary hardware and software, this article will walk you through each step to ensure a seamless and ...



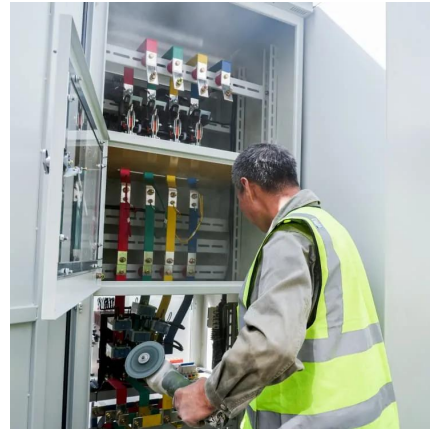
Base Stations

Backhaul Connection: The backhaul connection links the base station to the core network in the mobile communication system. It provides for the interchange of data between ...



Setting Up a Base Station CB Radio for Long Range Communication

Learn to set up a base station CB radio for long-range communication. Explore key components and expert tips for clear, reliable signals.



[How to set up a ham radio base station?](#)

A ham radio base station is a vital part of any radio amateur's setup, serving as a central hub for communication, experimentation, and community engagement. In this article, we'll take you ...

Présentation de la formation

A VSAT (Very Small Aperture Terminal) is a type of Satellite Earth Station (SES) or simply "E/S" that is designed and built purposely for "ender-user" deployment.



Contact Us

For catalog requests, pricing, or partnerships, please visit:
<https://www.motheopreprimary.co.za>