

# How to check the capacity of lead-acid battery cabinet





## Overview

---

In this video, applications engineer Barry Bolling uses a GS610 source measure unit to perform a charge-discharge test on a lead acid battery to show how to test lead acid battery capacity. The GS610 is made up of a programmable current and voltage source, a voltmeter, and an ammeter. How do you test a lead-acid battery?

To test the health of a lead-acid battery, you need to measure its voltage, perform a load test, and check the electrolyte's specific gravity. These tests help determine whether the battery is still functional or needs replacement. A failing lead-acid battery can cause unexpected breakdowns, slow engine starts, and reduced power output.

How often should you test a lead acid battery?

You should test your battery at least once every three months, especially if it powers a vehicle, solar system, or backup generator. More frequent testing is recommended in extreme temperatures or if you notice slow starts or dimming lights. What Voltage Indicates a Bad Lead-Acid Battery?

.

How do you measure battery capacity?

Capacity is the leading health indicator of a battery, but estimating it on the fly is complex. The traditional charge/discharge/charge cycle is still the most dependable method to measure battery capacity. While portable batteries can be cycled relatively quickly, a full cycle on large lead acid batteries is not practical for capacity measurement.

How do you know if a lead-acid battery is bad?

A visual inspection of a lead-acid battery helps detect early signs of wear, leaks, or corrosion that could affect its performance. Regular checks can prevent sudden failures and prolong battery life. Step 1: Check for Swelling or Bulging – A bloated battery case indicates overheating or overcharging.



What is a battery load test?

A load test evaluates how well a lead-acid battery performs under real-world conditions. Even if a battery shows a good voltage reading, it might still be weak under load. This test simulates a high-power demand to check if the battery can maintain stable voltage and deliver sufficient current.

What happens if a lead-acid battery fails?

A failing lead-acid battery can cause unexpected breakdowns, slow engine starts, and reduced power output. Over time, sulfation, low electrolyte levels, and internal resistance can degrade battery performance. Regular testing ensures that you catch these issues early, preventing costly failures.



## How to check the capacity of lead-acid battery cabinet

---



### **Safety, Storage, Operating and Maintenance Manual VRLA ...**

This manual contains important instructions for PowerSafe™ mSeries Lead-Acid Battery Systems that should be followed during the installation and maintenance of the battery system.

### Flooded Lead-Acid Battery Capacity Testing Procedure

Flooded Lead-Acid Battery Capacity Testing Procedure Based on IEEE-450-2010\* This document is intended to simplify and condense the above IEEE document into a helpful guide to testing ...



### How to Check Lead Acid Battery Health

The liquid-filled lead acid batteries used in automobiles and a range of other products have many great qualities, but are also known to "go bad" with little warning. ...

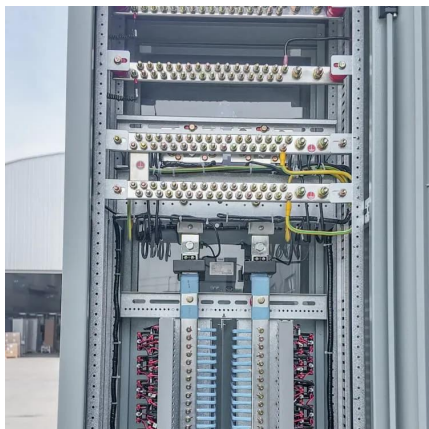
### How To Test Lead Acid Battery Capacity. Yokogawa

In this video, applications engineer Barry Bolling uses a GS610 source measure unit to perform a charge-discharge test on a lead acid battery to show how to test lead acid battery capacity.



## White Paper , Battery Inspection, Maintenance, and Testing

Discover best practices for battery inspection, maintenance, and testing in this expert white paper from Eagle Eye Power Solutions. Learn how to enhance battery reliability and extend system ...



## How To Test Lead Acid Battery Capacity? - DIY Battery Restoration

Testing your lead-acid battery capacity doesn't have to be daunting. With the right tools and a bit of know-how, you can confidently assess your battery's health and avoid unforeseen dramas.



## BU-904: How to Measure Capacity

A new battery or one that has been in storage can become an outlier on capacity estimation. Best results are achieved with a "working" battery that is pulled from service. ...







## How to Test the Health of a Lead-Acid Battery

In this guide, we'll explore the best methods to test a lead-acid battery, recommend top testing tools, and provide expert tips to extend your battery's lifespan.



## **How to Test the Maximum Capacity of a Lead-acid Battery?**

Testing the maximum capacity of a lead-acid battery typically involves performing a discharge test. Here's a basic procedure for testing the maximum capacity of a lead-acid battery:



## **Best method to find actual capacity? My battery chemistry is**

If your actual loads are more often more than 5 amps you could go off the median discharge rate and find the capacity you'll be getting for your use case instead of nameplate capacity. You'd ...



## Eaton three-phase UPS battery handbook

UPS battery overview The three battery types typically used in UPSs are: valve-regulated lead-acid (VRLA), also known as sealed or maintenance-free, lithium-ion and vented lead acid ...



## Methods for Testing Lead-Acid Battery Capacity

Ensuring their performance and reliability often requires regular capacity testing. This article outlines the primary methods used to test the ...



## Methods for Testing Lead-Acid Battery Capacity

Ensuring their performance and reliability often requires regular capacity testing. This article outlines the primary methods used to test the capacity of lead-acid batteries.



## UNDERSTANDING UPS SYSTEMS AND BATTERIES

Battery types Batteries are available in a range of technologies, including lead-acid, nickel-cadmium, lithium ion, lithium-sulfur, aluminum-ion, nickel-metal, and more. Of all these, lead ...



## **How Can I Test the Voltage and Capacity of a Lead Acid Battery ...**

Testing the voltage and capacity of a lead acid battery during reconditioning is essential. It saves you time and effort and ensures you're focusing on batteries that can be revived.





## How to Test Lead Acid Battery Capacity Using Battery Capacity ...

Allow us to introduce the fascinating Lead Acid Battery Capacity Indicator - a revolutionary device created to unravel the complexities of battery power.



## Best method to find actual capacity? My battery chemistry is

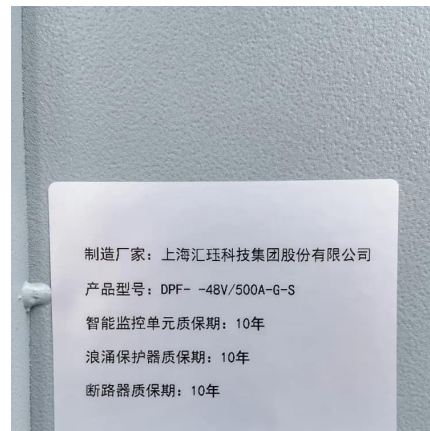
If your actual loads are more often more than 5 amps you could go off the median discharge rate and find the capacity you'll be getting for your use case instead of nameplate ...



## Maintaining Compliance in the VRLA Battery Room

Introduction Battery room compliance can be interpreted differently depending on your battery type, amount of cells or multi-cell units in a common area, volume of electrolyte and voltage

...



## Replacement UPS Batteries - Buying and Installing

Valve Regulated Lead Acid (VRLA) Batteries A VRLA (Valve Regulated Lead Acid) battery is a type of rechargeable battery commonly used in

...

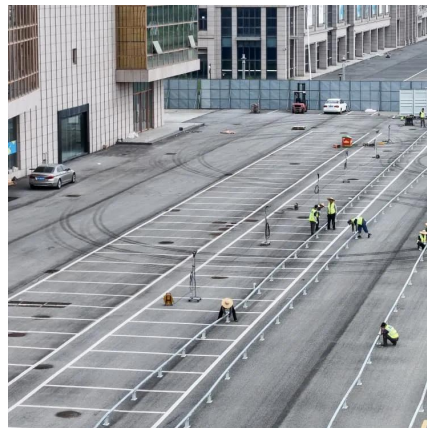






## BU-904: How to Measure Capacity

A new battery or one that has been in storage can become an outlier on capacity estimation. Best results are achieved with a "working" ...



## How to Test Lead Acid Battery Capacity Using Battery ...

Have you ever thought about how you can easily keep track of the remaining capacity of your lead-acid batteries? Allow us to introduce the fascinating Lead ...

## How To Test Lead Acid Battery With Multimeter? Quick Voltage ...

Key parameters to consider when assessing a lead-acid battery's health include: Voltage: A measure of the electrical potential difference between the positive and negative ...



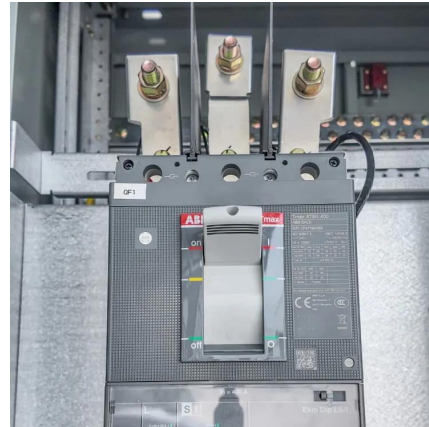
## UPS WITH A BATTERY SYSTEM 101. EDUCATION FOR ...

The above questions are the basics on selecting a UPS with battery system, however there are many factors to consider. The most common topology of a UPS with a battery system is the ...



## The Main Characteristics of UPS Battery Systems

Batteries in UPS systems -- 01 Internal and external components of a valve-regulated lead-acid (VRLA) battery of a wide variety of battery types; however, lead-acid (LA) batteries are ...



## **Determining A-Hr Capacity Of Lead-Acid Batteries: Key Factors ...**

Manufacturers determine the ampere hour (Ah) capacity of a lead-acid battery, like automotive batteries, by measuring how much amperage the battery can provide over a ...

## How to Test the Maximum Capacity of a Lead-acid ...

Testing the maximum capacity of a lead-acid battery typically involves performing a discharge test. Here's a basic procedure for testing the maximum capacity of ...



## **How To Test Lead Acid Battery With Multimeter? Quick Voltage Check**

Key parameters to consider when assessing a lead-acid battery's health include: Voltage: A measure of the electrical potential difference between the positive and negative ...



## Contact Us

---

For catalog requests, pricing, or partnerships, please visit:  
<https://www.motheopreprimary.co.za>