

How to measure the voltage of a battery cabinet





Overview

How do you test a battery?

Always check voltage before load testing a battery. Use MIN/MAX to catch voltage drops when starting the engine. Combine this test with ripple voltage and voltage drop tests for a complete system diagnosis. On maintenance-accessible batteries, also check electrolyte level and specific gravity if voltage is low.

How do you test a battery with a multimeter?

Connect multimeter probes to battery & measure the voltage. The voltage should fall across the specified in the cell or battery's datasheet. For NMC (Nickel-Manganese-Cobalt), this will range between 2.5 V & 4.2 V per cell. An LFP (Lithium Iron Phosphate) cell (or) battery will have a voltage between 2.5 V and 3.7 V.

What is a battery voltage test?

It's a simple test that can reveal undercharging, overcharging, or early signs of battery failure — before deeper diagnostics are needed. Follow this step-by-step guide to measure battery voltage with a multimeter. Measuring battery voltage is a fast, essential way to determine the state of charge.

What tools do you need to test a battery?

Without the correct tools, you won't be able to accurately test the voltage in your batteries, which could lead to inaccurate results or even potential safety risks. Here's a quick list of the tools you'll need: Multimeter: This is the primary tool for testing battery voltage. It's versatile, accurate, and can measure both AC and DC voltages.

What if my battery reading is less than 12 volts?

If your reading is less than 12.2 volts, your battery might be undercharged, and less than 12 volts indicates a serious discharge. Remember, frequency



and interpretation of checks may vary based on your battery type. Sticking around guarantees you'll pick up essential troubleshooting skills and signs of low voltage.

Can voltage predict a battery's state of Health?

Voltage alone cannot predict a battery's state of health (SoH). Connect multimeter probes to battery & measure the voltage. The voltage should fall across the specified in the cell or battery's datasheet. For NMC (Nickel-Manganese-Cobalt), this will range between 2.5 V & 4.2 V per cell.



How to measure the voltage of a battery cabinet



How to Test Battery Capacity: Comprehensive Guide and ...

The voltage method is one of the most basic battery capacity testing methods. By measuring the voltage across the battery, its remaining capacity can be preliminarily ...

[How to Test a Battery with a Multimeter?](#)

4 days ago · How to Measure Battery Amps with A Multimeter In Part 2, we will measure the current of the battery. #1 - Select the DC current function using the dial and keep it at 200mA ...



Battery Testing Procedure

When the battery is rested, its voltage represents the level of charge in an open circuit. Voltage alone cannot predict a battery's state of health (SoH). Connect multimeter ...



[How to Check Voltage with a Multimeter Easily](#)

To check voltage with a multimeter, set the multimeter to the DC voltage setting (usually indicated by "V" with a straight line). Connect the red ...



How To Check The Battery Voltage With Multimeter? Simple ...

With a few simple steps and a basic understanding of electrical principles, anyone can become proficient in this essential skill. This guide will walk you through the process of ...



[How to Check Voltage Using a Multimeter? A Simple Guide](#)

For example, if you're unsure of the voltage, start at the highest AC or DC voltage range your meter offers. If you are measuring a low voltage circuit such as a battery, start on a ...



[How to Check Battery Voltage Correctly](#)

Learn how to check battery voltage the right way. This guide covers tools, techniques, and tips for safe and accurate measurements.





[Learn How to Test a Battery Using a Multimeter](#)

How to check battery voltage using a multimeter
Disconnect the battery from the circuit. Rotate the knob of the multimeter and set it to 15-20V ...



[How to Measure OCV of Battery: A Step-by-Step Guide](#)

Learn how to measure the open circuit voltage (OCV) of a battery accurately with this step-by-step guide for all battery types.

How to Calculate Battery Voltage

To calculate battery voltage, you measure the potential difference between the positive and negative terminals using a digital multimeter or voltmeter. It's a quick, non ...



[How to Check the Battery Voltage: A Comprehensive Guide?](#)

Using a digital multimeter, you measure voltage by connecting the red probe to the battery's positive terminal and the black probe to the negative terminal, then reading the ...



How to Measure Voltage with a Multimeter?

Measuring voltage with a multimeter is a straightforward but essential skill for anyone working with electronics. A multimeter allows you to determine the electrical potential ...



Unlock the Secrets: How to Check Battery Voltage Using Analog

Learning how to check battery voltage using an analog multimeter is a valuable skill for any DIY enthusiast, electronics hobbyist, or anyone who wants to get more life out of ...



How to Measure Battery with Multimeter? A Step-by-Step Guide

Understanding Voltage, Current, and Resistance
Voltage is the electrical potential difference between two points in a circuit, measured in volts (V). It represents the driving force ...



How To Check Voltage On A Battery With Multimeter?

Checking battery voltage with a multimeter is a crucial skill for anyone working with electronics. This guide has covered the importance of accurate voltage measurement, the ...



How to measure the voltage of batteries in the battery cabinet

If we assume one terminal of the battery pack is connected to ground, we can measure the open circuit voltage across each cell. This works because DMMs measure differential voltage, or the ...



How to do UPS Battery Wiring?

F. Before connecting the battery cables from the battery cabinet to the host, measure the battery voltage with a multimeter, which should be 103.36V, and ...

Battery Testing Procedure

When the battery is rested, its voltage represents the level of charge in an open circuit. Voltage alone cannot predict a battery's state of ...



[How to Check Voltage with a Multimeter Easily](#)

To check voltage with a multimeter, set the multimeter to the DC voltage setting (usually indicated by "V" with a straight line). Connect the red probe to the positive terminal of ...



Battery Cabinet

To check for inadvertent grounding of the battery, use a digital multi-meter set to the DC Volts scale to measure the voltage between any battery terminal and either the cabinet framework ...

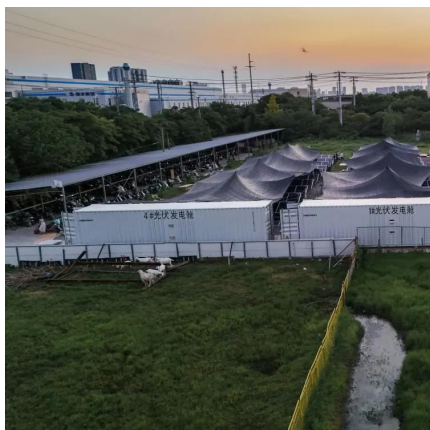
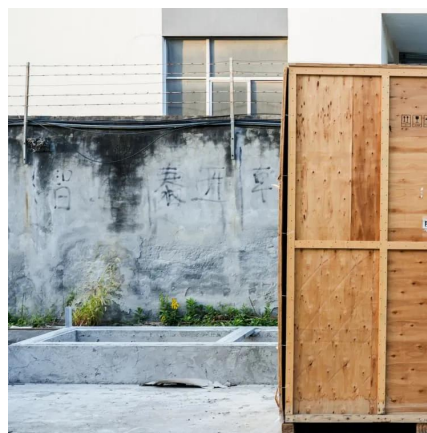


How to Test Voltage with a Multimeter

Select a high range on the dial for the test. Choose a range according to the regular voltage of the device you wish to test. The voltage is printed on some devices and ...

Essential Guide: How to Check Battery with Ohm Meter for ...

Have you ever wondered how to accurately assess the health of your battery without relying solely on its voltage? While voltage readings can provide a general idea, they ...



How to Measure Battery Voltage with a Multimeter , Fluke

Follow this step-by-step guide to measure battery voltage with a multimeter. Measuring battery voltage is a fast, essential way to determine the state of charge.



How to measure the voltage of batteries in the battery cabinet

Generally, a fully charged 6-volt battery should read around 6.3 to 6.5 volts, an 8-volt battery should have a voltage of 8.4 volts or higher, and a 12-volt battery should read around 12.6 volts.



Contact Us

For catalog requests, pricing, or partnerships, please visit:
<https://www.motheopreprimary.co.za>