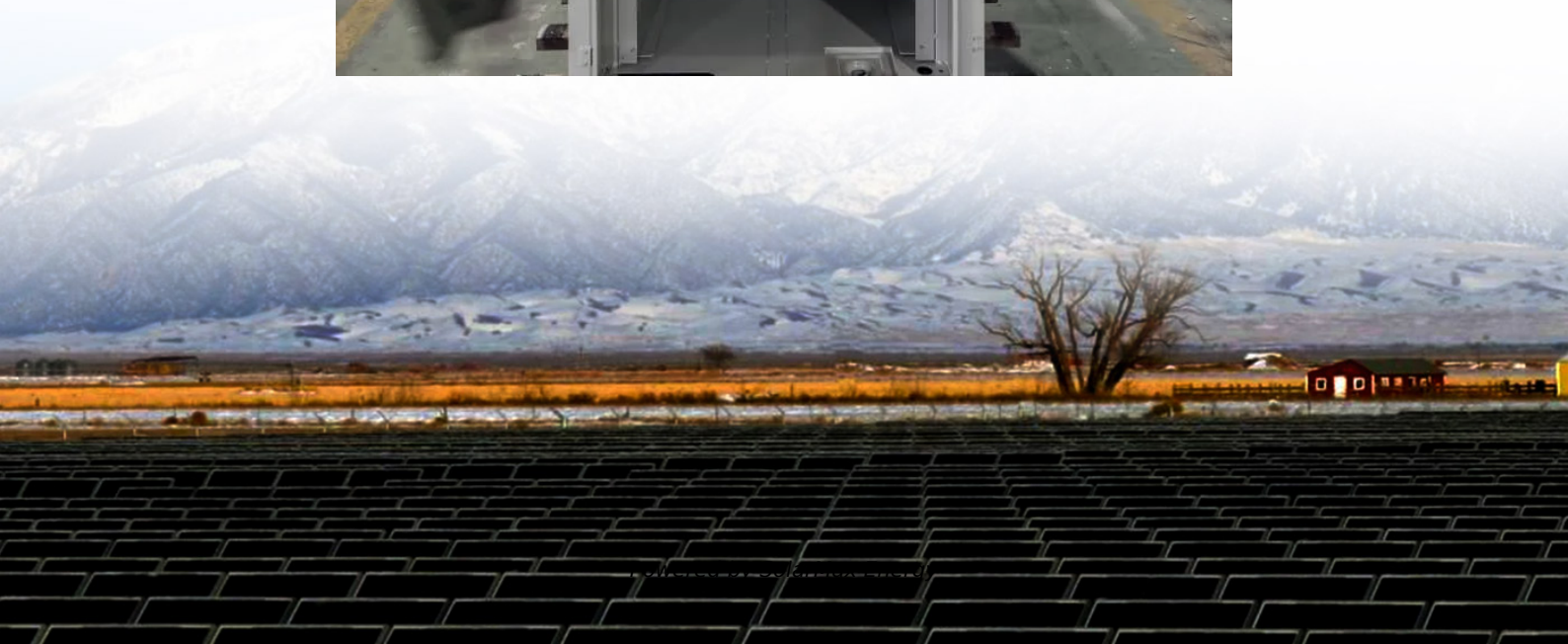


# **Huawei inverter charging batteries**





## Overview

---

Connect to the inverter, choose Power adjustment > Battery control on the home screen, and set related parameters. Set this parameter to Maximum self-consumption. PV power is preferentially supplied to loads, and the surplus PV power is used to charge the battery. Can a Huawei battery oversize a hybrid inverter?

You can ignore that limit if you have the Huawei battery connected to the Huawei hybrid inverters. This image shows 20kW of panels that are running from 2 x Huawei 5kW M1 inverters with a Huawei Luna battery. Their data sheet shows 'recommended' maximum of 150% oversizing, but in fact you can go much further than that.

What are Huawei solar inverters & batteries?

Enter Huawei solar inverters. These devices play a crucial role in optimizing solar efficiency. They convert the direct current (DC) generated by solar panels into alternating current (AC) for use in homes and businesses. In this comprehensive guide, we delve into the world of Huawei inverters and batteries.

How much power does a Huawei inverter pull down?

The 5kW Huawei inverter is pulling down almost 9kW, 5kW for the house, 4kW for the battery, until the battery is full at 12.30pm. Huawei and shaded solar panels. periodically rescan the MPPTs finding the maximum possible voltage, and help reduce the impact of panel shade on the string as a whole.

How many kW can a Huawei inverter charge?

1.4kW to 7kW charge rate on single phase, 1.4kW to 22kW on three phase. Can automatically switch from 3 phase to 1 phase charging. Oversizing Huawei inverters. Most people know that if you have a 5kW inverter you can connect up to 6.66kW of panels to it. That's really more a rule about getting Government subsidies (STCs) than any technical reason.



How to configure a Huawei inverter for specific charging and discharging periods?

To configure your Huawei inverter for specific charging and discharging periods, you need to change the operation mode to 'TOU'. - In this mode, TOU (time-of-use) is selected. You can manually set the charge and discharge time segments.

How do I charge a battery with a solar inverter?

Connect to the inverter, choose Power adjustment > Battery control on the home screen, and set related parameters. Set this parameter to Maximum self-consumption. PV power is preferentially supplied to loads, and the surplus PV power is used to charge the battery.



## Huawei inverter charging batteries

---



### FusionSolar App and SUN2000 App Device Commissioning Guide

The Peak Shaving function can reduce the maximum peak power obtained from the grid during peak hours by configuring the power supply power in self-use mode or TOU mode, thereby ...

### Huawei three-phase inverter for C&I PV plants with storage batteries

Hybrid inverter with double MPPT and single input each has extra voltage technology that allows you to reach a maximum voltage of 1100 V in DC and the possibility of ...



### Huawei Battery Support

Hello, My system: (2) 10k Victron Quattro 48v 140amp Inverters (5) Victron MPPT 150/60 charge controllers (28) 550w Solar panels (8) Huawei LifePH04 48v 100amp batteries, ...

### Huawei / iStore review

Each Huawei hybrid inverter can connect up to 2 x 15kWh stacks of Huawei batteries. The largest one we've installed so far was 2 x 10kWh stacks on a 5kW L1 inverter.





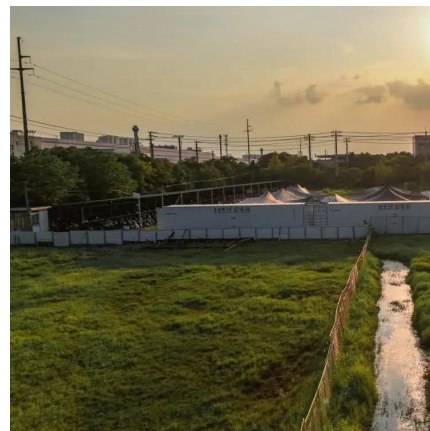
## Setting Battery Control

Connect to the inverter, choose Power adjustment > Battery control on the home screen, and set related parameters. Set this parameter to Maximum self-consumption. PV power is ...



## Battery Parameters

The peak shaving function is unavailable when the battery working mode is set to Fully fed to grid. If the peak shaving function has been enabled but you need to use Fully fed ...



## Solution Scenarios

In the PV+ESS+Charger Solution, the charger compares the grid-connection point information reported by the meter with the total current setting of the main circuit breaker to quickly adjust ...





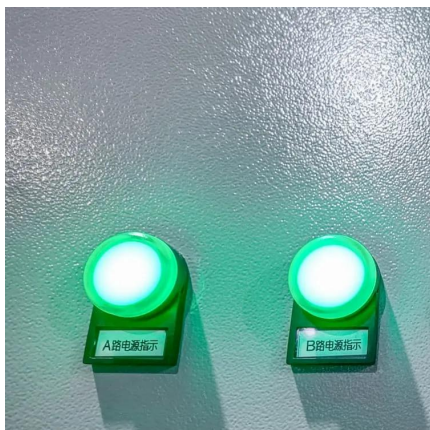
## A Complete Review of the Huawei Luna2000 Battery

It is installed inside the main electrical switchboard and has a communication cable to feedback to the inverter, allowing it to manage the charging and discharging of the ...



## **All Huawei Solar Products Explained**

Huawei is a Chinese company that provides information and communication technology, smart devices, and solar products. The company ...



## **Huawei / iStore review**

Huawei FusionCharge EV Charger Huawei's EV charger is due by March 2023. It can be set to automatically adjust the charge rate to only use available solar ...



## **Huawei Luna2000 Battery**

The Huawei Luna2000 can be connected to single-phase or three-phase hybrid inverters, so it suitable for solar system owners with a battery ready set up. The battery utilises ...



## [Huawei batteries Luna 2000 connected with Huawei ...](#)

Hello, I'm using Luna 2000 5kW batteries and Huawei inverters but according to Huawei connection possibilities, we can have 3 Huawei ...



### **SUN2000-2/3/3.68/4/4.6/5/6KTL-L1**

IEC62116 \*1 Available in 2020 Q3. \*2 Inverter max input PV power is 10,000 Wp when long strings are designed and fully connected with SUN2000-450W-P power optimizers. ...

## **Huawei Inverter and Battery Review -- Clean Energy Reviews**

We review the range of inverters from one of the world's largest manufacturers Huawei with battery ready options, power optimisers and advanced monitoring features.



### [How to set up grid charging on Huawei inverter](#)

Below is a guide to charge your battery via the FusionSolar app. Please note, it can typically either be done by going into the Dongle or Battery in the device tab. If you cannot update it via ...





## [Huawei: Solar inverters and batteries](#)

In this comprehensive guide, we delve into the world of Huawei inverters and batteries. We explore their features, benefits, and how they contribute to ...



## [Huawei Solar Inverter Complete Guide 2025: Models, ...](#)

Future-Proof Battery Integration: All residential Huawei inverters come battery-ready with plug-and-play LUNA2000 compatibility, enabling homeowners to add energy ...



## **Usual Energy , Empowering Sustainability for a Greener Future**

Learn how to connect an inverter to a battery with step-by-step guidance for efficient energy usage and sustainability.



## [Huawei: Solar inverters and batteries](#)

In this comprehensive guide, we delve into the world of Huawei inverters and batteries. We explore their features, benefits, and how they contribute to optimal solar efficiency. Whether ...





## Huawei / iStore review

Each Huawei hybrid inverter can connect up to 2 x 15kWh stacks of Huawei batteries. The largest one we've installed so far was 2 x 10kWh stacks on a ...



## How do I configure a (hybrid) Huawei inverter with optimizers?

Learn how to configure a Huawei inverter with optimizers, battery, and EV charger via FusionSolar, including physical installation and smart setup.

## Grid-tied ESS Networking

Grid-tied ESS Networking Networking 1: Single Inverter The grid-tied ESS consists of PV strings, LUNA2000 batteries, inverter, AC switch, loads, power distribution unit (PDU), power meter, ...



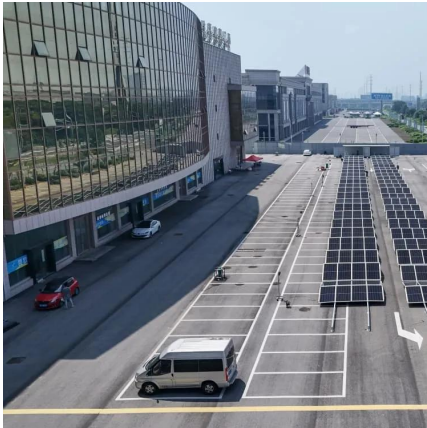
## [Huawei three-phase inverter for C&I PV plants with ...](#)

Hybrid inverter with double MPPT and single input each has extra voltage technology that allows you to reach a maximum voltage of 1100 V in ...



## Battery Storage and Recharge

After the charging is complete, turn off the AC switch between the inverter and the power grid, and then set the DC SWITCH of the ESS to OFF. If other batteries need to be charged, repeat the ...



## Commercial and Industrial PV Solutions , HUAWEI ...

HUAWEI FusionSolar Commercial Industrial Smart PV Solution Fits all rooftop scenarios, provides all products and training, for all system components on ...

## Contact Us

---

For catalog requests, pricing, or partnerships, please visit:  
<https://www.motheopreprimary.co.za>