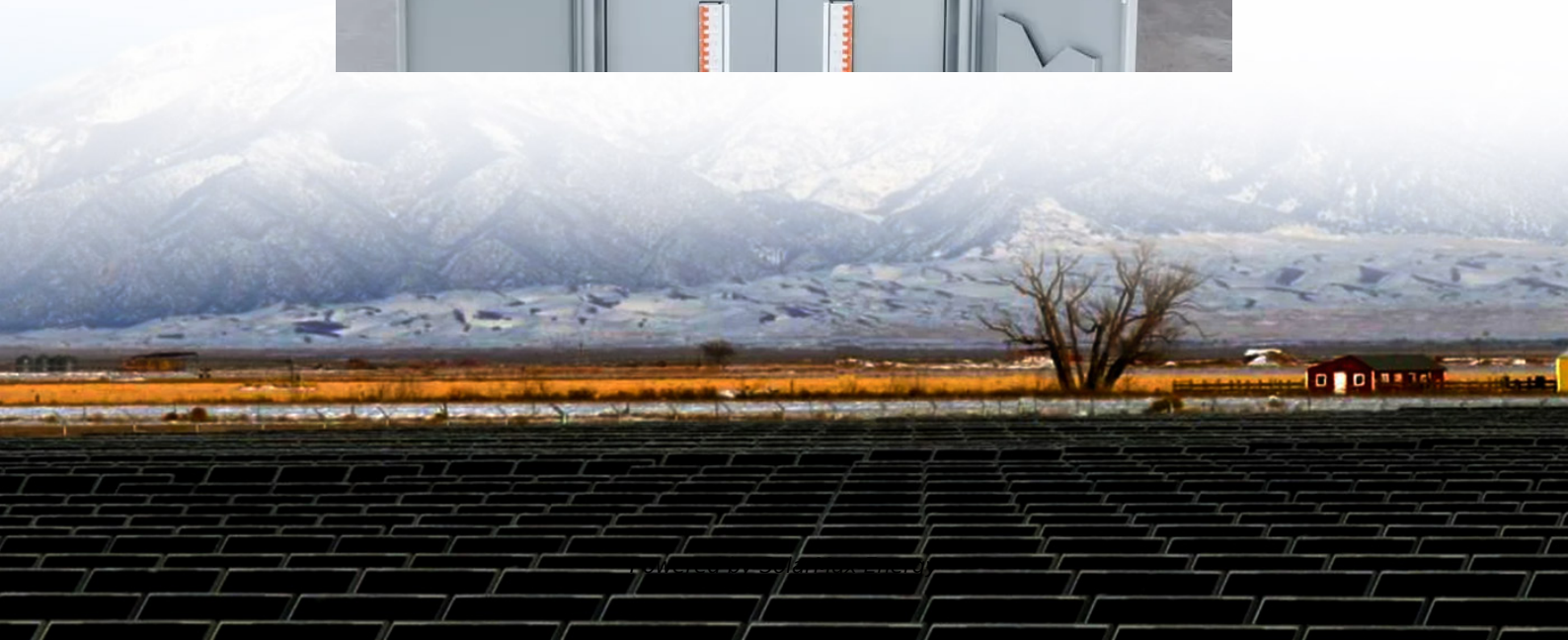


# Inverter power consumption is high





## Overview

---

How much power does a 1000W inverter use?

In general, the standby power consumption of most inverters is relatively low, typically less than 1% of their rated power output. For a 1000W inverter, the average idle power consumption could be around 10-20 watts, while for a 2000W inverter, it could be around 20-40 watts.

Is an inverter 100% efficient?

No inverter is 100% efficient—some energy always gets lost as heat during the conversion. Most modern inverters have efficiency ratings between 90% and 98%. Let's break it down: If you feed 1000 watts of DC power into your inverter and it outputs 950 watts of AC power, your inverter efficiency is 95%.

What is a good efficiency rating for an inverter?

Most modern inverters have efficiency ratings between 90% and 98%. Let's break it down: If you feed 1000 watts of DC power into your inverter and it outputs 950 watts of AC power, your inverter efficiency is 95%. The other 50 watts were lost in the conversion process—mostly as heat.

How much power does an inverter use?

But this amount may vary depending on the type of battery bank used and the types of loads connected to the inverter. Typically, in a no-load current, the energy drawn by the inverter is only 2 to 10 watts an hour. What Amount of Power is Wasted by Inverter?

Do not confuse the inverter's no-load current with the efficiency rating of the inverter.

Why does an inverter consume a lot of power?

This may sound confusing because at times when the inverter is not connected to any load then also it consumes power. It is because inverters



produce waveforms even on standby mode and the larger the inverter is the more power it needs to start.

How much power does a high frequency inverter use?

High frequency MOSFET drive switching is usually the dominate idle consumption but a poorly designed output PWM low pass filter can add to idle losses by having a high reactive power factor load. Generally a 3 kW sinewave high freq inverter is 30 to 50 watts of full idle power. A high frequency inverter has two primary stages.



## Inverter power consumption is high

---



### How Much Power Does an Inverter Use on Standby? - ECGSOLAX

In this article, we will explore the no-load current draw of inverters, the amperage they draw, and provide some practical advice on reducing standby power consumption.

### Inverter Usage Calculator & Formula Online Calculator Ultra

The Inverter Usage Calculator helps users to determine the energy consumption of their inverter systems, which is crucial for managing electricity bills and assessing power needs.



### Low-power consumption anisotropic CMOS inverters based on n ...

The surge in data volume and algorithmic complexity necessitates the development of highly integrated, low-power, and high-performance electronic components. Conventional ...



### [Inverter Myths Debunked: Power Consumption and ...](#)

Smarter conversions through intelligent conversations  
Inverter Myths Debunked: Power Consumption and Electricity Bills Understanding the Impact of Inverters ...



### **WHY do all-in-one Solar Power Inverters have a high idle consumption**

That works out to 50W which is pretty low for most Inverters. Some Inverters especially the Low Frequency kind can be real power hogs going up to 100+ watts of power ...



### How Much Power Does a Solar Inverter Use: An ...

The amount of power a solar inverter uses depends on its efficiency rating, size, and whether it's operating or in standby mode - a ...



### Inverter Peak Power vs Rated Power: What it is and ...

The rated power is the power at which the inverter is stabilized over a long period, whereas the peak power is only used for short periods of ...

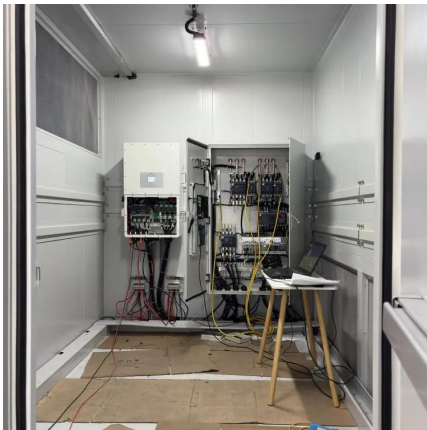






## Standby power consumption

The inverter consumes power simply making AC power available. All MPP Solar/Growatt units and the similar other-branded units suffer from this issue, typically 40 ...



## [Inverter Myths Debunked: Power Consumption and ...](#)

In a world where reliable electricity is crucial, inverters are not just a convenience but a necessity. However, there's a common misconception that inverters are ...

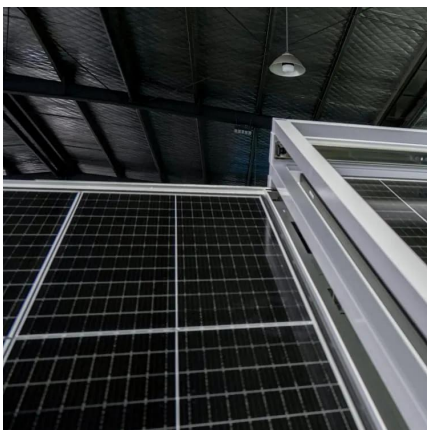
## [How Much Power Does An Inverter Draw With No Load?](#)

To know the power consumption, you need to add a percentage to the power used by a load according to the inverter efficiency. For example, an inverter with a watt load of 200 ...



## [Lowest "Idle draw" inverter. : r/SolarDIY](#)

Ok very quick I have a 12v 300amp lithium system, I need to run an inverter 24/7 with a intermittent load of 20W~ I am looking for a low power high efficiency Pure sine wave (150 ...





## **[Moved] Difference of perspective on Growatt/MPP All-in-One idle power**

When you purchase cheap Chinese inverters, you get high idle consumption in most cases - certainly true of the MPP Solar, Growatt (Voltronix) brands. A handful of them are ...



## **Inverter Efficiency: Understanding How Much Power You're ...**

Most modern inverters have efficiency ratings between 90% and 98%. Let's break it down: If you feed 1000 watts of DC power into your inverter and it outputs 950 watts of AC ...

## How Much Power Does An Inverter Draw With No Load?

According to the U.S. Department of Energy, modern inverters can have efficiency ratings between 80% to 95%. This means that if an inverter needs to deliver 1,000 watts of AC ...



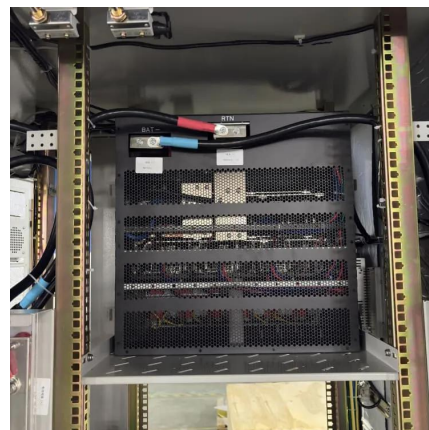
## Fundamentals of VLSI CMOS Power Consumption

Power Bottleneck Complex, large and costly power supply circuits: Three-phase step-down converter built from toroidal coils, power MOSFETs, and electrolytic capacitors.



## How much power does an inverter use on standby - PowMr

In general, the standby power consumption of most inverters is relatively low, typically less than 1% of their rated power output. For a 1000W inverter, the average idle ...



## Does An Inverter Use A Lot Of Electricity?

The power consumption of the inverter will vary depending on the size and number of devices connected to it. It's like being at an all-you-can-eat ...

## **Understanding Inverter Power Consumption: Do Inverters Use Power ...**

One common question that arises is: do inverters consume power when they're not actively being used? This article will explore this topic in detail, breaking down the ...



## **Inverters**

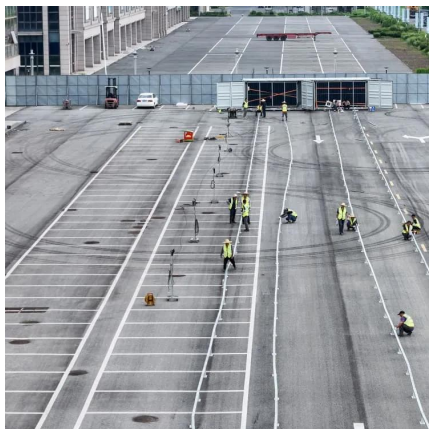
The 2200 VA rack-mounted DC-AC inverter provides high-performance power conversion for large-scale or mission-critical applications. It offers reliable AC power from DC sources, ...





### How much power does an inverter use on standby - ...

In general, the standby power consumption of most inverters is relatively low, typically less than 1% of their rated power output. For a 1000W ...



### **Inverter Myths Debunked: Power Consumption and Electricity ...**

In a world where reliable electricity is crucial, inverters are not just a convenience but a necessity. However, there's a common misconception that inverters are a major contributor to increased ...

### Does Inverter Increase Electricity Bill: Find Out

An inverter is a device that regulates the flow of electrical power. It converts the direct current electricity to alternating current for stand-alone systems or to supply power to an ...



### Does Inverter Air Conditioner Save Electricity

Inverter air conditioners (ACs) are highly effective in reducing electricity consumption. Unlike traditional AC models, which use fixed-speed ...



## How much power does an Inverter use just sitting there idling?

It's pretty safe to assume that unless your unit advertises low idle power consumption, or it has a standby mode where it checks for an AC load every so often, then it ...



## What is Inverter Efficiency? , inverter

What does inverter efficiency mean? In fact, we shall discuss here the general power inverter efficiency whether it's solar inverter or pure sine wave inverter or even modified ...

## What is the standby power consumption of an inverter?

Generally, off - grid inverters tend to have a relatively higher standby power consumption compared to grid - tied inverters. This is because they need to be constantly ready to supply ...



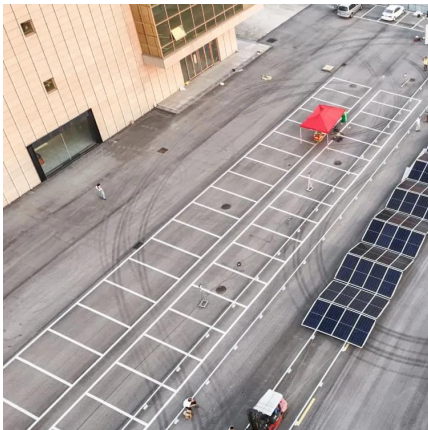
## **Inverter Power Draw: How Much Power Does an Inverter Use ...**

According to the U.S. Department of Energy, modern inverters can have efficiency ratings between 80% to 95%. This means that if an inverter needs to deliver 1,000 watts of AC ...



## How Much Power Does an Inverter Use on Standby?

In this article, we will explore the no-load current draw of inverters, the amperage they draw, and provide some practical advice on reducing ...



## **Understanding Inverter Power Consumption: Do Inverters Use ...**

One common question that arises is: do inverters consume power when they're not actively being used? This article will explore this topic in detail, breaking down the ...

## Does An Inverter Use A Lot Of Electricity?

The power consumption of the inverter will vary depending on the size and number of devices connected to it. It's like being at an all-you-can-eat buffet--only the more devices ...



## **Contact Us**

---

For catalog requests, pricing, or partnerships, please visit:  
<https://www.motheopreprimary.co.za>