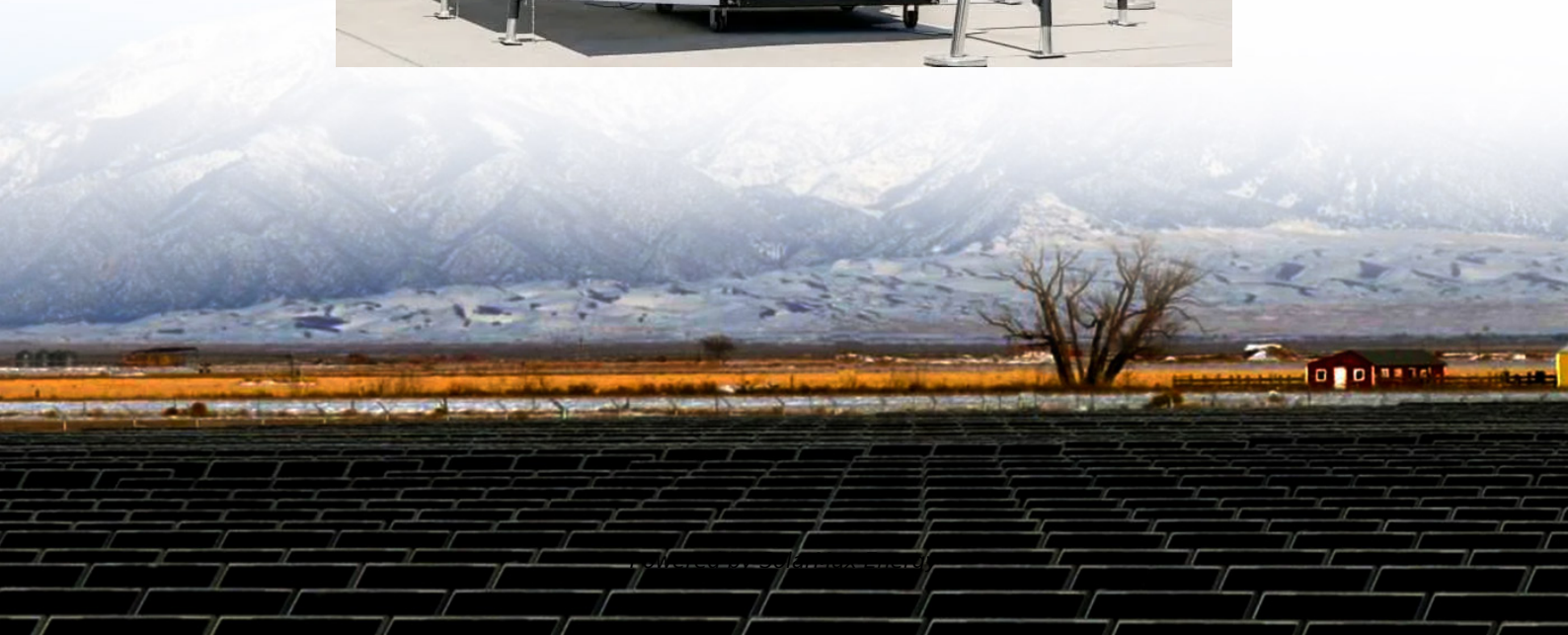


Is a 500W outdoor battery cabinet enough





Overview

Are 500 watt power stations safe?

Absolutely! 500-watt portable power stations are designed for indoor and outdoor use. They are particularly useful during power outages, offering a safe and quiet backup power option for lights, routers, and essential electronics. Unlike gas generators, they are emission-free and safe to use indoors. 9. How Do I Maintain My 500-Watt Power Station?

.

What can a 500 watt portable power station Power?

A 500-watt portable power station can power a variety of small to medium devices, including: It's ideal for charging essential electronics and smaller appliances. However, it may not handle high-wattage items like large refrigerators, microwaves, or power tools. 2. How Long Will a 500-Watt Portable Power Station Last?

.

How many hours can a 500W battery power a 50W device?

For example, a 500Wh battery can theoretically power a 50W device for 10 hours ($500\text{Wh} \div 50\text{W} = 10$ hours). In short, 500 watts shows the peak power output, while watt-hours reflect the stored energy capacity. 6. What Are the Key Features to Look for in a 500-Watt Power Station?

Important features include:.

Is a 500 watt power station worth it?

If you frequently need portable power or want backup during outages, a 500-watt power station is definitely worth it. It provides flexibility, is easy to use, and is often more cost-effective in the long term compared to relying on disposable batteries or small power banks.



Can a 500 watt power station be used for camping?

Yes, a 500-watt power station is a great choice for camping. It can power essential items like LED lights, fans, and small electronics, making it perfect for short camping trips. If you plan to camp for extended periods, look for solar compatibility so you can recharge on the go. 8. Can I Use a 500-Watt Portable Power Station Indoors?

.

How much power does the EBL portable power station 500 have?

The EBL Portable Power Station 500 provides a versatile and efficient backup power solution with a 519.4Wh capacity and 500W continuous output, peaking at 1000W. Weighing 15 pounds, it strikes a balance between portability and performance, ideal for emergency home use, camping, or outdoor activities.



Is a 500W outdoor battery cabinet enough



[I Tested the 500-Watt Portable Power Station: Here's ...](#)

500W Portable Power Station, GRECELL Solar Generator 519Wh (Peak 1000W) Lithium Battery Power Generator with 2*110V AC Outlets, Mobile Battery ...

Is a 500W outdoor portable power station enough? What are the

To be honest, the high-power ones are very cool to use, but the weight and volume have also increased. Unless you are driving out to play, it is very convenient to carry.



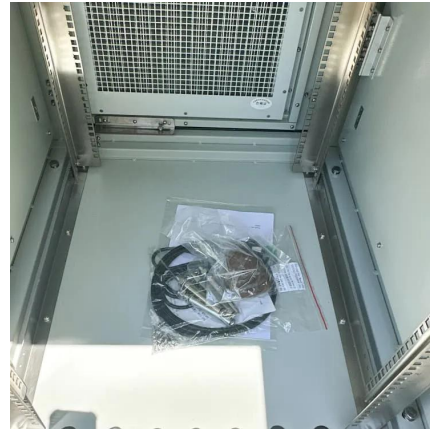
IPx5 Rated Outdoor Battery Cabinet

China IPx5 Rated Outdoor Battery Cabinet catalog of IP55 Solar Outdoor Batteries Cabinet 500W Waterproof Telecom Equipment 30u Outdoor Cabinet Battery Enclosure, 30u Waterproof IP55 ...



[I Tested the 500-Watt Portable Power Station: Here's ...](#)

This battery pack has been a lifesaver on my outdoor adventures and has even come in handy for emergency backup at home. The 518Wh capacity is able to ...



Is 500W power station enough?

Is a 500W power station enough to meet your needs? In this blog post, we'll dive deep into the world of power stations to help you understand their uses and determine if a ...



[IP55 Solar Outdoor Batteries Cabinet 500W ...](#)

IP55 Solar outdoor Batteries Cabinets 500W Waterproof Telecom Equipment Outdoor Cabinet Battery Enclosure AZE 30RU 750mm Wide x 750mm Deep ...



[Weatherproof Battery Enclosures for Solar & 12v ...](#)

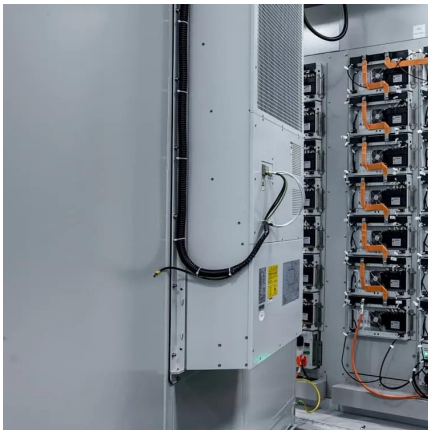
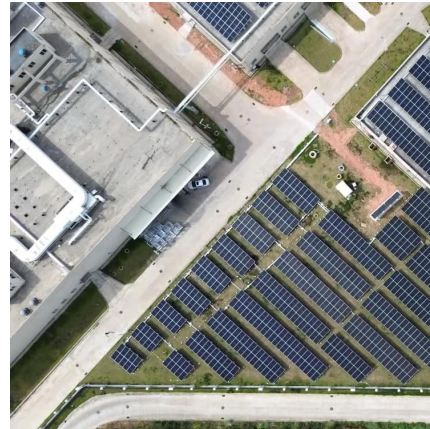
Protect your solar batteries with AZE Telecom's weatherproof battery enclosures. Explore durable outdoor 12v battery storage, pole-mounted battery boxes, and ...





ESS-GRID Cabinet Brochure EN-250106

The ESS-GRID Cabinet series are outdoor battery cabinets for small-scale commercial and industrial energy storage, with four different capacity options based on different cell ...



Outdoor Battery Cabinets: A Smart Choice for Reliable

When selecting an outdoor battery cabinet, there are several factors to consider to ensure it meets your specific needs: Size and Capacity: The size of the cabinet should be ...

What You Need To Know About 500W Power Station

Q: What is a 500W power station, and why is it gaining popularity? A: A 500W power station is a portable energy source designed to provide up ...



BESS Commercial Energy Storage Cabinet System

AZE's all-in-one IP55 outdoor battery cabinet system with DC48V/1500W air conditioner is a compact and flexible ESS based on the characteristics of ...



Outdoor Battery Cabinets , Battery Cabinets , Weatherproof Outdoor

Outdoor battery cabinet enclosure is designed to house a variety of batteries and ideal for applications where your expensive and sensitive network equipment is exposed environmental ...



I Tested the 500-Watt Portable Power Station: Here's Why It's My ...

This battery pack has been a lifesaver on my outdoor adventures and has even come in handy for emergency backup at home. The 518Wh capacity is able to power all of my devices with ease, ...

[How to choose an outdoor power supply?](#)

Discover how to choose the right outdoor power supply with Topwell Power's guide. Explore their LiFePO4 battery 500W power supply with USB ...



Outdoor Battery Enclosures

Battery Enclosures If you're using batteries with your off-grid system, you will need to protect them from the elements and separated from living areas. Often that means a dedicated enclosure. ...



[What Can a 500W Portable Power Station Run](#)

With rising blackouts and outdoor adventures, portable power is no longer a luxury but a necessity. This guide reveals exactly what your 500W station can (and can't) power, how ...



[Is 500W Enough for an E-Bike? Expert Insights and ...](#)

Overall, a 500W electric bike is a great choice for riders who are looking for a balance between power and efficiency. It provides enough power to handle most riding ...

Outdoor Battery Cabinet Guide: IP Ratings, Cooling & Selection

2 days ago · Discover how to choose the right outdoor battery cabinet with insights on IP ratings, cooling methods, and design factors to ensure safe and reliable energy storage.



Best 500 Watt Portable Power Station in 2025: Tested and ...

From battery capacity and recharge times to versatility in output options and durability, we'll break down everything you need to know to make an informed decision.



[Is a 500W outdoor portable power station enough?](#)

To be honest, the high-power ones are very cool to use, but the weight and volume have also increased. Unless you are driving out to play, it ...



[ESTEL Outdoor Battery Cabinet Buying Guide for 2025](#)

Find tips to choose the best outdoor battery cabinet for your energy needs, focusing on size, cooling, durability, and future expansion options.

[How to Choose an Outdoor Power Supply? , Topwell ...](#)

Discover how to choose the right outdoor power supply with Topwell Power's guide. Explore their LiFePO4 battery 500W power supply with USB ...



[Best 500 Watt Portable Power Station in 2025: Tested ...](#)

From battery capacity and recharge times to versatility in output options and durability, we'll break down everything you need to know to make ...



[When is a 12V battery drill not enough? : r/DIY](#)

Built about 200ft of cedar fence only having to charge the batteries once halfway through, I drill steel and other metals often, more than enough power, battery life is lower when drilling ...



Outdoor Inverter Battery Cabinet - Durable & Weatherproof ...

Discover high-quality outdoor inverter battery cabinets designed for durability, weather resistance, and secure power storage. Ideal for solar systems, UPS, and telecom ...

[How to choose an outdoor power supply?](#)

Discover how to choose the right outdoor power supply with Topwell Power's guide. Explore their LiFePO4 battery 500W power supply with USB Type A, Type C, and car charger ...



[What You Need To Know About 500W Power Station](#)

Q: What is a 500W power station, and why is it gaining popularity? A: A 500W power station is a portable energy source designed to provide up to 500 watts of power output. ...



Case study-Outdoor Battery Cabinet

These cabinets are an essential component in any outdoor electrical installation, providing the reliability and durability needed to keep ...



Contact Us

For catalog requests, pricing, or partnerships, please visit:
<https://www.motheopreprimary.co.za>