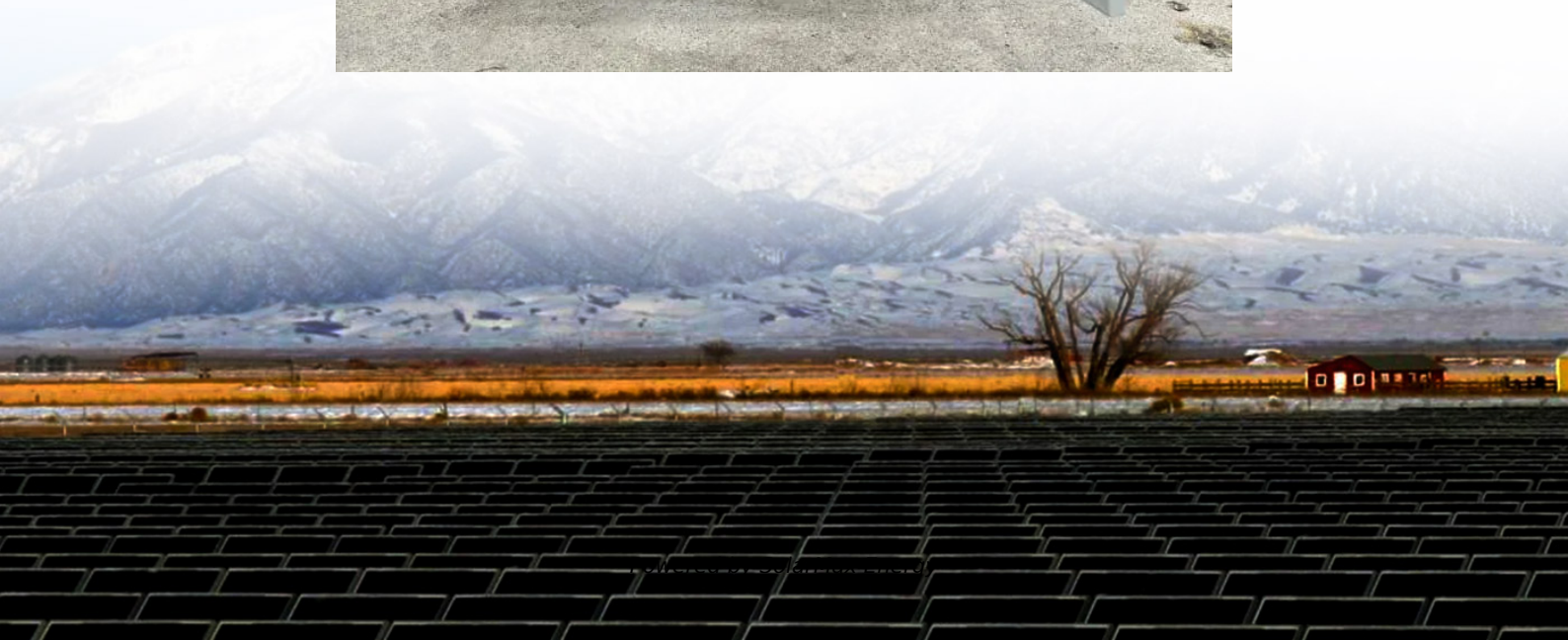


Lithium battery charging and discharging equipment





Overview

What is charge & discharge equipment?

Charge / Discharge | DAIICHI JITSUGYO CO.,LTD. Charge and discharge equipment is one of the most important processes in lithium-ion battery manufacturing to determine the quality of lithium-ion batteries by repeatedly charging and discharging them at a specified current, voltage, and temperature.

What is a charge/discharge cycle testing solution?

Battery cell, module and pack level charge/discharge cycle testing solutions designed to provide high accuracy measurement with advanced features. Most of our solutions are regenerative – so energy sourced by the battery back is recycled back to the channels in the system or to the grid.

What is the maximum charging power & discharging power?

The maximum charging power is 3.2KW, and the maximum discharging power is 2.4KW, with strong power output capability. Supports three working modes: charging, discharging and equalization. Supports 24-channel cell synchronization equalization. Support overvoltage, overcurrent, reverse polarity and other protection mechanisms.

What are the advantages of a lithium battery tester?

1. The 7-inch LCD touch screen and the intuitive menu simplified the operation. 2. Portable, easy to carry and transport. 3. Applied to all common lithium battery packs testing with various voltage levels. 4. Equalizing maintenance test can activate the lithium battery performance completely. 5.

Why do you need high-precision charge/discharge testing equipment?

High-precision charge/discharge inspection, excellent safety, and energy saving are required at the same time. We manufacture advanced charge/discharge testing equipment based on our unique electrical control



technology, and have sold many of these products to users in Japan and overseas.



Lithium battery charging and discharging equipment



Lithium Ion Battery Charging Efficiency: Breakthrough Strategies

...

Lithium Ion Battery Charging Efficiency In today's world, lithium-ion batteries power everything from smartphones and laptops to electric vehicles and renewable energy storage ...

[Understanding Charge-Discharge Curves of Li-ion Cells](#)

This charge curve of a Lithium-ion cell plots various parameters such as voltage, charging time, charging current and charged capacity. When ...



[What Are Battery Charge and Discharge Equipment ...](#)

Explore functions and selection guide for battery charge and discharge equipment. This article covers key testing methods, including ...



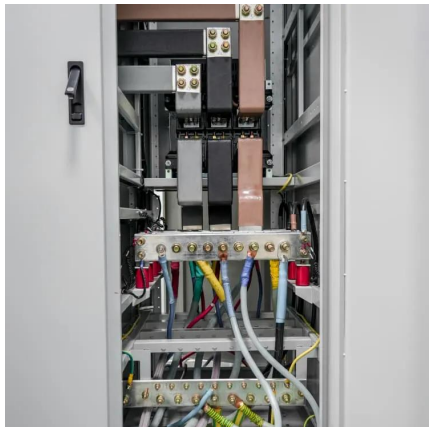
Lithium-Ion Cell Charging and Discharging During Life ...

Lithium-ion cells get charged and discharged, both during life cycle testing and during formation. However, the goals for life cycle testing ...



Charging and Discharging / DJK Europe

Charge and discharge equipment is one of the most important processes in lithium-ion battery manufacturing to determine the quality of lithium-ion batteries by repeatedly charging and ...



ELP400 EV Battery Pack Module Charging and ...

ELP400 has built-in various test and maintenance modes, which are suitable for the discharge, charging, cycle charging and discharging tests of various ...



Lithium Battery Pack Aging Cabinet, Battery Charging ...

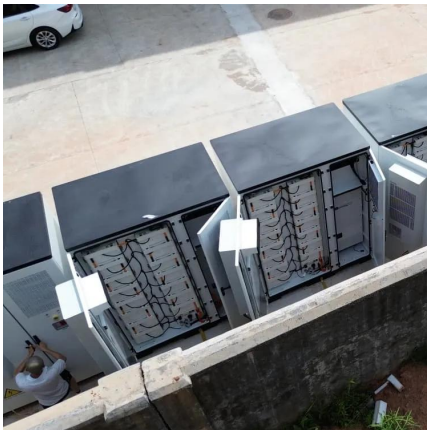
Lithium battery pack aging cabinet is the necessary equipment for charging and discharging of the finished li-ion battery pack. View more finished battery pack ...





Lithium Battery Charge Discharge System

Lithium Battery Charge Discharge System adopts intelligent charging & discharging integrated control technology, which is mainly applied to the charging& discharging test of low-voltage ...

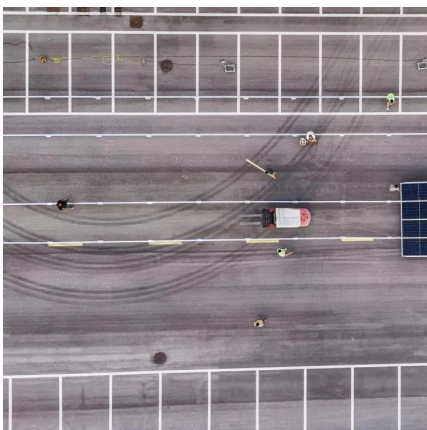
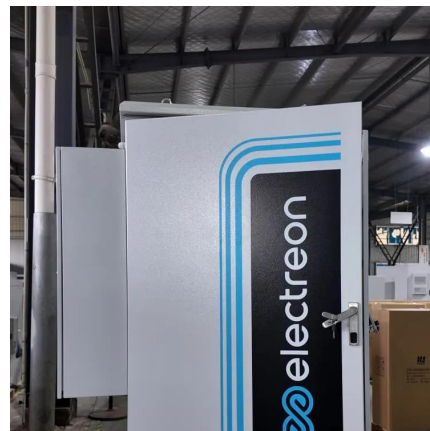


How to Discharge a Lithium-ion Battery

Learn how to properly discharge lithium-ion batteries, maintain your life and property safety, and extend the battery's lifespan.

SmartSafe ECB240 Charge, Discharge, and Equalize ...

ECB240 is a high-power, high-current, charging, discharging and equalization integrated maintenance equipment designed specifically for large-capacity ...



Key Safety Standards for Lithium Battery Operations

In conclusion, lithium battery safety requirements encompass various aspects of charging, discharging operations, and electrical use, from ...



Lithium Battery Charge and Discharge Tester ...

The battery charge and discharge tester for finished battery is a smart and accurate equipment. It is mainly used for the cycle charging and discharging ...



9V-99V Computerized Lithium Battery Charge and ...

Charging test and discharge test can be performed for lead-acid batteries, lithium batteries and other types of batteries. The maximum charge & discharge cycle ...



Lithium Battery Pack Aging Cabinet, Battery Charging and Discharging

Lithium battery pack aging cabinet is the necessary equipment for charging and discharging of the finished li-ion battery pack. View more finished battery pack testing equipment information at ...



SmartSafe ECB240 Charge, Discharge, and Equalize All-in-One ...

ECB240 is a high-power, high-current, charging, discharging and equalization integrated maintenance equipment designed specifically for large-capacity battery packs. It supports ...



Charge Discharge Tester DSF2010

The Charge Discharge Tester DSF2010 is an advanced battery testing solution designed for accurate charge and discharge cycles.

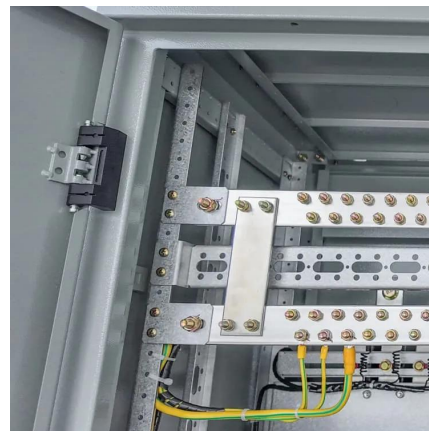


Understanding Battery Discharger Types and Uses

Ensuring safe storage, especially for lithium-ion batteries. Prolonging battery life by maintaining proper charge-discharge cycles. By ...

Lithium Battery Pack Tester DSF-20

Charging test and discharge test can be performed for lead-acid batteries, lithium batteries and other types of batteries. The maximum charge & discharge cycle index is 16 times, which can ...



EP401 , Battery Charge & Discharge Equipment , SmartSafe

The EP401 is a battery pack module charge-discharge machine for efficient charging, discharging & balancing of lithium-ion batteries in EV.



Battery Test Equipment

Arbin products delivers fast, accurate Self-Discharge Current measurement while maintaining battery electrochemical balance. Our technology allows the ...

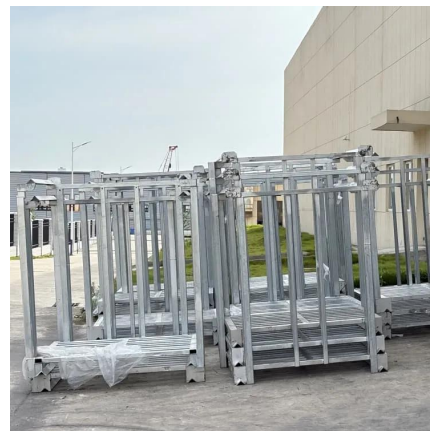


[Charge / Discharge , DAIICHI JITSUGYO CO.,LTD.](#)

Charge and discharge equipment is one of the most important processes in lithium-ion battery manufacturing to determine the quality of lithium-ion batteries by repeatedly charging and ...

[Battery Charge Discharge System for High Voltage ...](#)

The battery charge discharge system is mainly applied to the high voltage battery pack, such as the battery packs of electric vehicles, electric bicycles, power ...



ELP400 EV Battery Pack Module Charging and Discharging Device

ELP400 has built-in various test and maintenance modes, which are suitable for the discharge, charging, cycle charging and discharging tests of various lithium batteries on the market.



What Are Battery Charge and Discharge Equipment Used For?

Explore functions and selection guide for battery charge and discharge equipment. This article covers key testing methods, including capacity, rate performance, self-discharge, ...

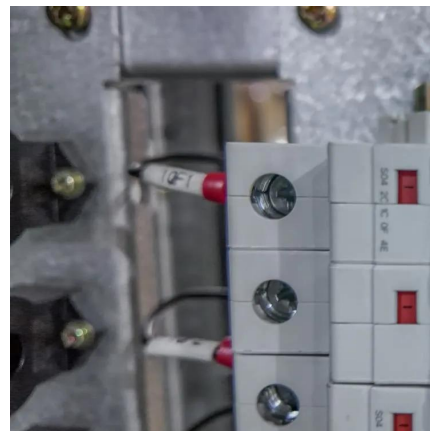


Lithium Battery Charge and Discharge Equalization Integrated ...

This all-in-one device addresses voltage and capacity discrepancies within and between lithium battery modules, ensuring optimal performance and longevity. The system supports remote ...

Battery Cell, Module, and Pack Cycler Test Equipment

From power conversion to battery to electrical safety, our test systems will maximize your time, improve your validation process, and increase your throughput. High precision, integrated ...



[Battery Charge and Discharge Tester Manufacturer, ...](#)

The battery charge and discharge tester is a testing equipment for testing the high-power lithium-ion battery pack. This test system is an energy feedback type.



Contact Us

For catalog requests, pricing, or partnerships, please visit:
<https://www.motheopreprimary.co.za>