

Mobile base station battery models and specifications





Overview

Which battery is best for telecom base station backup power?

Among various battery technologies, Lithium Iron Phosphate (LiFePO₄) batteries stand out as the ideal choice for telecom base station backup power due to their high safety, long lifespan, and excellent thermal stability.

What makes a telecom battery pack compatible with a base station?

Compatibility and Installation Voltage Compatibility: 48V is the standard voltage for telecom base stations, so the battery pack's output voltage must align with base station equipment requirements. Modular Design: A modular structure simplifies installation, maintenance, and scalability.

What is a battery management system (BMS)?

Battery Management System (BMS) The Battery Management System (BMS) is the core component of a LiFePO₄ battery pack, responsible for monitoring and protecting the battery's operational status. A well-designed BMS should include: Voltage Monitoring: Real-time monitoring of each cell's voltage to prevent overcharging or over-discharging.

Why is backup power important in a 5G base station?

With the rapid expansion of 5G networks and the continuous upgrade of global communication infrastructure, the reliability and stability of telecom base stations have become critical. As the core nodes of communication networks, the performance of a base station's backup power system directly impacts network continuity and service quality.

What makes a good battery management system?

A well-designed BMS should include: Voltage Monitoring: Real-time monitoring of each cell's voltage to prevent overcharging or over-discharging.

Temperature Management: Built-in temperature sensors to monitor the battery pack's temperature, preventing overheating or operation in extreme



cold.



Mobile base station battery models and specifications



What to Know About OEM Rack-Mounted Lithium Batteries for ...

These batteries are designed to meet the demanding requirements of modern telecommunications infrastructure, including high energy density, long cycle life, and the ability ...

Power supply for base station.

It starts off around 12.6 volts and drops fairly steadily as the battery discharges. Mobile radios are typically designed to operate on a 13.8 volt electrical system, which is what ...



[Battery specifications for communication base stations](#)

With their small size, lightweight, high-temperature performance, fast recharge rate and longer life, the lithium-ion battery has gradually replaced the traditional lead-acid battery as a better option ...

[DIY Mobile Base Station Conversion Guide](#)

Materials and Step by Step Instructions How to convert a stationary base station provided by Vence Corp into a mobile base station. Your conversion may look different depending on the



...



[Base Power Battery Specifications , Compare Models](#)

Compare Base Power's home battery systems - from our streamlined 20kWh wall-mount to our advanced 50kWh ground-mount solution. View complete technical specifications.



[Security Camera Systems, Video Doorbells.](#)

Protect what matters most with Arlo's award-winning smart home security solutions. Shop security cameras, video doorbells, floodlight cameras and ...



[Base Power Battery Specifications , Compare Models](#)

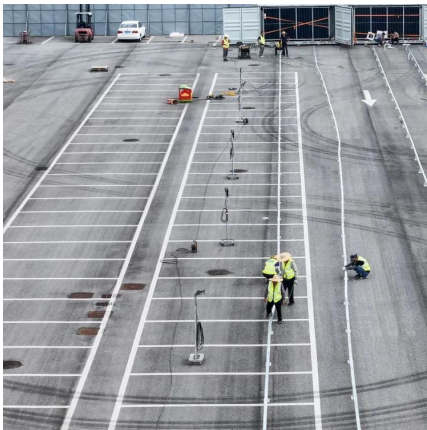
Compare Base Power's home battery systems - from our streamlined 20kWh wall-mount to our advanced 50kWh ground-mount solution. View complete ...





Telecom Base Station Backup Power Solution: Design ...

Discover the 48V 100Ah LiFePO4 battery pack for telecom base stations: safe, long-lasting, and eco-friendly. Optimize reliability with our ...



Tower base station energy storage battery

Elisa has transformed the backup batteries in its mobile network base stations into a smartly controlled, distributed virtual power plant with a capacity of 150 MWh, which serves as part of ...

Motorola CM200D-D0-D-25 Base Station

What are the key benefits of using a Base Station? Base Stations are designed to be used in areas where two way radios are in constant use. There's no ...



5G NR Base Station Classes: Type 1-C, Type 1-H, ...

Learn about the different classes of 5G NR base stations (BS), including Type 1-C, Type 1-H, Type 1-O, and Type 2-O, and their specifications.



Understanding Backup Battery Requirements for Telecom Base Stations

Telecom base stations require reliable backup power to ensure uninterrupted communication services. Selecting the right backup battery is crucial for network stability and ...



Choosing a 12V Battery for Your Mobile Base Station

For most mobile base station applications, AGM or Gel batteries offer a good balance of performance, maintenance, and cost. Li-ion batteries are a premium option with superior ...

ADT Smart Home Security

The ADT Base is the main in-home controller for your ADT Smart Home Security system. It communicates with your security sensors and devices and is used to arm and ...



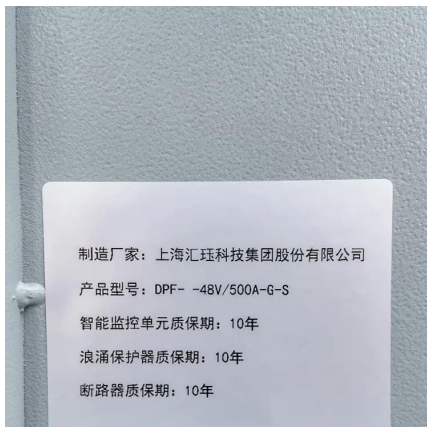
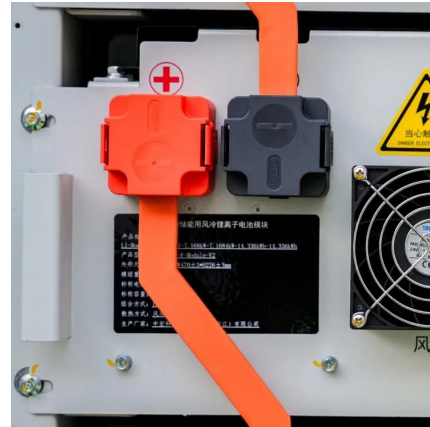
Power Base Station

Base station power refers to the output power level of base stations, which is defined by specific maximum limits (24 dBm for Local Area base stations and 20 dBm for Home base stations) ...



MTS4L TETRA/LTE Base Station Specification Sheet

C-SCCH - additional control channels on the main
The MTS4L can be installed as a TETRA only base station, but it can include the services for the ...



Battery types in mobile base stations

Which battery is best for a telecom base station?
REVOV's lithium iron phosphate (LiFePO4) batteries are ideal telecom base station batteries. These batteries offer reliable, cost-effective ...

Understanding Backup Battery Requirements for ...

Telecom base stations require reliable backup power to ensure uninterrupted communication services. Selecting the right backup battery is ...



Dragonfish Standard

The Dragonfish base station and the integrated Dual RTK modules equip the aircraft with additional redundancy and positioning accuracy to provide precise, centimeter ...



DANNAR 4.00 Merging Work & Power

DANNAR 400 Series - Merging work and power, we are proud to introduce the DANNAR 400. Battery electric, our Mobile Power Station® moves heavy off-road equipment ...



Telecom Base Station Backup Power Solution: Design Guide for ...

Discover the 48V 100Ah LiFePO4 battery pack for telecom base stations: safe, long-lasting, and eco-friendly. Optimize reliability with our design guide.

What to Know About OEM Rack-Mounted Lithium Batteries for Telecom Base

These batteries are designed to meet the demanding requirements of modern telecommunications infrastructure, including high energy density, long cycle life, and the ability ...



What Size Battery for Base Station? , HuiJue Group E-Site

New EU Ecodesign mandates effective 2024 require base station batteries to have 90% recyclability. This shifts the calculus toward lithium-based solutions despite higher upfront ...



How to Select the Best ESTEL Battery Backup for Base Stations

Choose the best telecom battery backup systems by evaluating capacity, battery type, environmental adaptability, maintenance, and scalability for base stations.



Comprehensive Guide to Base Station Energy Storage Battery ...

Lithium-ion battery systems have emerged as the optimal solution for base station energy storage, offering 24/7 power resilience, lower operational costs, and eco-friendly performance.

Contact Us

For catalog requests, pricing, or partnerships, please visit:
<https://www.motheopreprimary.co.za>