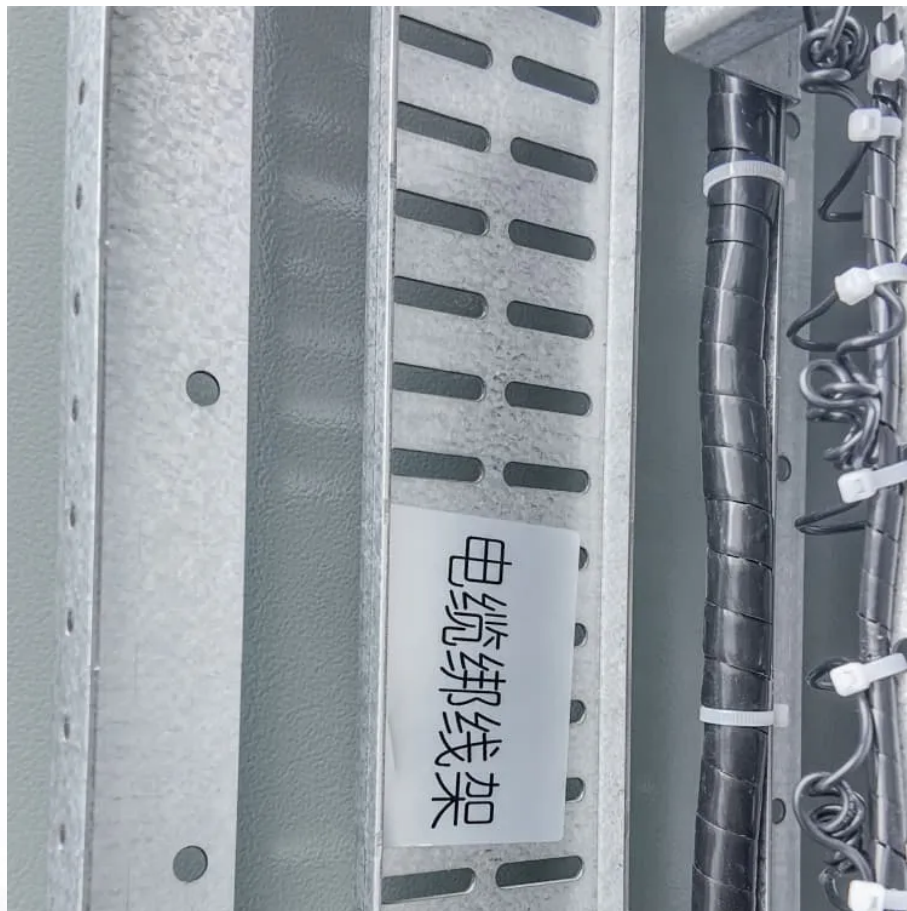


New Energy Base Station Installation Precautions





Overview

What are the environmental and site preparation considerations before construction?

Environmental and Site Preparation Considerations Before construction begins, the site must be prepared to support the installation of a BESS. This includes assessing the site's soil and ensuring that it is stable enough to support the weight of the batteries and other infrastructure.

What are the requirements for electric service and meter installations?

The NEC mandates specific requirements for electric service and meter installations to ensure safety and reliability. These include proper grounding, clearances, and accessibility. The National Electrical Code (NEC) provides essential guidelines for electric service and meter installations.

What are the energy storage operational safety guidelines?

In addition to NYSERDA's BESS Guidebook, ESA issued the U.S. Energy Storage Operational Safety Guidelines in December 2019 to provide the BESS industry with a guide to current codes and standards applicable to BESS and provide additional guidelines to plan for and mitigate potential operational hazards.

How do I plan a Bess installation?

When planning a BESS installation, the choice of location is critical. A suitable site must offer easy access for both construction and ongoing maintenance, without compromising safety or functionality. Accessibility to transportation routes is important for transporting the large equipment needed for installation.

How do you install a service entrance?

The service entrance must be easy to access. This allows for quick inspections and repairs. The location should be free from obstacles. Install the entrance on a sturdy, weather-resistant wall. Avoid placing it near windows or vents.



Ensure it is well-lit for nighttime visibility. Proper placement reduces risks and enhances safety.

How can I ensure a safe and compliant electrical installation?

Stay informed about changes to maintain compliance. By avoiding common mistakes and following NEC guidelines, you can ensure safe and compliant installations. The National Electrical Code (NEC) frequently updates its guidelines. These changes ensure safety and efficiency in electrical installations.



New Energy Base Station Installation Precautions



A Model for Assessing base Stations for Compliance with ...

Abstract--A model for assessing the level of EMF emission from installed base stations and confirming that the base stations comply with the prescribed exposure limits is proposed. The ...

Nec Requirements for Electric Service And Meter Installations

Compliance ensures safety and efficiency. Always refer to the latest NEC guidelines. Proper installation reduces risks and promotes reliable electrical systems. Stay informed and ...



[Installation and hardware , Base Help Center](#)

What safety precautions does Base take? Safety & Reliability You Can Trust. Should I have one battery or two? What are city inspections of the Base battery installations? When and why do ...

[SigenStack Energy Storage System Installation Guide](#)

o You are advised to install the equipment in a location where you can easily access, install, operate, maintain it, and view the indicator status. o Do not install the equipment in a



smoky, ...



The Energy Base: Powering the New Energy Landscape

The Energy Base is our new gigawatt-scale, long-duration energy storage solution. Each Energy Base project leverages ESS' proven core technologies to deliver the power, energy, and flexible



How To Install A Personal Weather Station

Receiving & unpacking a new weather station can be exciting. Installing & setting it up can be a bit daunting and complicated thought.



SteamVR Tracking 2.0 Base Station Safe Setup, Use, and Care

SteamVR Tracking 2.0 Base Station Safe Setup, Use, and Care SteamVR Tracking 2.0 Base Station Safe Setup, Use, and Care Follow these instructions for the safe setup, use, and care ...



[Nec Requirements for Electric Service And Meter ...](#)

Compliance ensures safety and efficiency. Always refer to the latest NEC guidelines. Proper installation reduces risks and promotes reliable ...

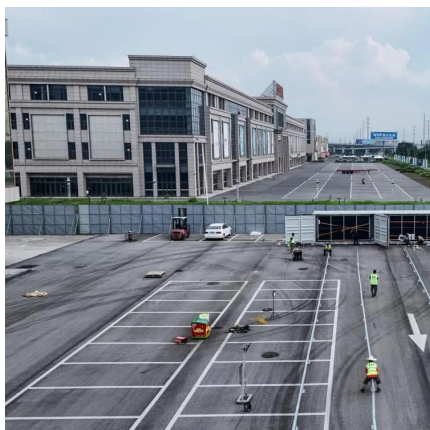


[Residential BESS Installation Safety](#)

Learn essential safety tips for Residential BESS (Battery Energy Storage Systems) installation. This comprehensive guide covers proper precautions, potential risks, ...

[Four Overlooked BESS Project Requirements](#)

With energy storage growing as a critical asset to the grid, it is important to understand these four BESS requirements to avoid unexpected costs or schedule delays.



What are the Essential Site Requirements for Battery Energy ...

Installing fire suppression systems, maintaining safe distances from other structures, and implementing clear safety signage are all mandatory in most locations. In ...



The Importance of Renewable Energy for ...

Installations of telecommunications base stations necessary to address the surging demand for new services are traditionally powered by ...

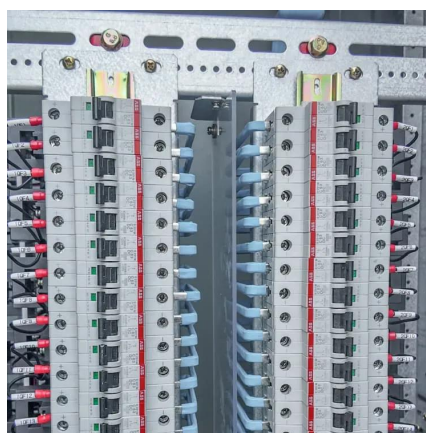


1. Safety precautions

Installation must be performed by qualified and trained installers only. Carefully study the product manuals of all connected devices before installing them. Switch off the system and check for ...

RF Radiation and Electromagnetic Field Safety

Although Amateur Radio is basically a safe activity, in recent years there has been considerable discussion and concern about the possible hazards of ...



Wind Turbine Technician Core Competencies

Background Wind energy generation is a form of renewable electricity generation comprised of individual generating units spread across an extensive area either offshore or onshore. Each ...



SP228 Manual+Ultisolar New Energy Co Ltd Solar Pump Station ...

This document provides an extensive manual for the installation, function, and operation of a solar water heating control system, emphasizing the necessity for professional installation and ...



6 Gas Station Theft Prevention Precautions

6 Gas Station Theft Prevention Precautions. 1. Build a network organization of Gas Station Theft Prevention Precautions. 1.1 Establish a gas station anti ...

Battery Energy Storage Systems: Main Considerations for Safe

EPA has developed comprehensive guidance to help communities safely plan for installation and operation of BESS facilities as well as recommendations for incident response.



Energy Storage Station Battery Installation: A 2025 Guide for ...

And here's why you'll care: The global energy storage market is projected to triple by 2030, but 42% of installation delays still come from overlooked safety protocols [1]. Let's make sure your ...



Smart Meter Installation Made Easy: A Comprehensive Guide for ...

How to install a smart meter--either by yourself or with a professional--and learn about key considerations, benefits, and tools from trusted providers like Grus for a seamless ...



[CD0001U: NV Energy CONDUIT INSTALLATION GUIDE](#)

14.3 Precautions -Due to expansion and contraction of plastic duct of 1-1/2" per 100' for every 20oF change in temperature, the following precautions should be taken: 14.3.1 Allow extra ...

Siting and Safety Best Practices for Battery Energy Storage ...

NFPA 855 (Standard for the Installation of Stationary Energy Storage Systems): Provides the minimum requirements for mitigating the hazards associated with BESS.



[Automatic Weather Station Installation Location ...](#)

Selecting the right location for installing an automatic weather station is a critical step in ensuring the accuracy and reliability of ...



Gas filling station safety precautions

The sign "Top Ten Prohibitions on Safety Management of Gas Stations" should be set in the gas filling station.



MM-015039-001, MASTR V Base Station

In addition, your HARRIS base station installation complies with the following Standards and Guidelines with regard to RF energy and electromagnetic energy levels and evaluation of such ...

Contact Us

For catalog requests, pricing, or partnerships, please visit:
<https://www.motheopreprimary.co.za>