

# Outdoor signal base station design





## Overview

---

What is an outdoor compact base station?

**Outdoor compact base stations** These base stations are designed for installation in any type of outdoor scenario. They offer a high degree of IP protection, which allows them to operate in the most adverse conditions (rain, extreme heat, wind, humidity, saline environments. ) without requiring an additional mechanical cover.

What should I consider when designing a base station?

Whatever you're designing, you'll need to consider cost, ease of installation and assembly and, of course, flammability. This goes for a femtocell base station or 5G small cell backhaul, base transceiver station architecture, or a cellular base-station equipment. We recommend you use nylon material where it's offered.

What is an indoor base station?

**Indoor base stations in rack format** This is the most common type of base station, in which all its components are integrated in a rack-type cabinet, which provides more space for more modules or components. This can enable, for example, redundancy of all components, thereby improving system availability.

Why do small outdoor base stations have a better performance than rack-mount base stations?

In recent years, technological advances have meant that this base station format has improved its performance in terms of RF power and traffic channels. Thus, by adopting new signal processing techniques such as SDR (Software Defined Radio), small outdoor base stations have been able to match the performance of rack-mount base stations.

What are the different types of base stations?



Some basic types of base stations are as follows: Macro-base stations are tall towers ranging from 50 to 200 feet in height, placed at strategic locations to provide maximum coverage in a given area. Those are equipped with large towers and antennas that transmit and receive radio signals from wireless devices.

What is a transportable base station?

Due to the characteristics of size and ability to operate in hostile environmental conditions that we have reviewed in outdoor base stations, transportable base stations are ideal for installation in vehicles or, in general, to be used in mobility environments by incorporating transport accessories.



## Outdoor signal base station design

---



### Base station types: a solution for every deployment scenario

These base stations are designed for installation in any type of outdoor scenario. They offer a high degree of IP protection, which allows them to operate in the most adverse ...

### 4 types of Base stations

A micro base station is a relatively small-scale base station with a smaller coverage area than a macro base station. It is usually set up in densely ...



### [A guide to choosing Base Station Antennas](#)

In this week's blog, Rani MAKKE, BSA Product Line Manager at RFS, offers a guide to selecting Base Station equipment for operators that are ...

### [Active DAS vs Passive DAS vs Hybrid DAS](#)

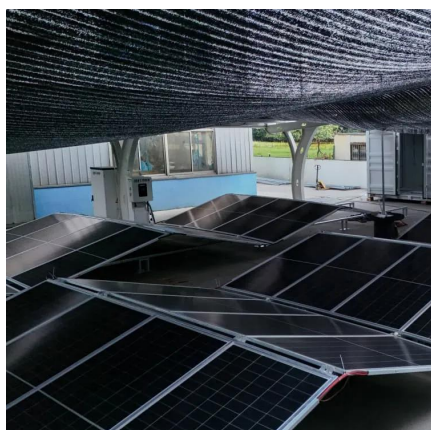
Base-Transceiver Stations (BTS) This is the most typical source of RF signal for a DAS connection from Telstra, Optus and Vodafone. It involves ...





## Types of Base Stations

Base stations are one of the widely used components in the field of wireless communication and networks. It is an access point or base point of a particular area for ...



## Quick guide: components for 5G base stations and antennas

Your 5G base-station design and 5G antenna components will need to address not only technical challenges, but also aesthetics, weather and security requirements. This guide ...



## [A guide to choosing Base Station Antennas](#)

In this week's blog, Rani MAKKE, BSA Product Line Manager at RFS, offers a guide to selecting Base Station equipment for operators that are in the process of extending their ...





## Design and Assessment of a 5G Base Station using Massive ...

Our goal was to demonstrate a simulation-based methodology that can be used to aid in the process of designing antennas and evaluating their potential performance in realistic 5G ...



## [Outdoor Wi-Fi Dual-band Dual-polarized Base Station ...](#)

Base station antennas typically require a narrower beam and higher gain. Based on the antennas pro- posed in section II, the low-frequency four-element dual- polarized antenna array and the ...

## The Role of Directional Antennas in Outdoor WiFi Base Stations

Outdoor WiFi base stations, such as those manufactured by Signal, help create the internet infrastructure for various devices outdoors. One key element in these base stations are ...



## Distributed Antenna Systems (DAS): The Definitive Guide [2025]

Everything you need to know about Distributed Antenna Systems (DAS) in one up-to-date guide. From the fundamentals of signal distribution, through to passive, active, off-air, optical & hybrid ...



## Optimization of 5G base station coverage based on self-adaptive

In communication network planning, a rational base station layout plays a crucial role in improving communication speed, ensuring service quality, and reducing investment ...



## COMONENTS OR 5G BASE STATIONS AND ANTENNAS

Typically used: doors IP67 SEALING GROMMETS  
View online rfases while sealing against the elements. IP67 grommets are designed for outdoor use, providing a dust and watertight seal ...

## Blog -Communication Signal Tower Types & Design,Mobile Base ...

UHV (Ultra-High Voltage) transmission towers are structures designed to support high-voltage power lines for the transmission of electricity over long distances. UHV transmission systems ...



## Base Stations

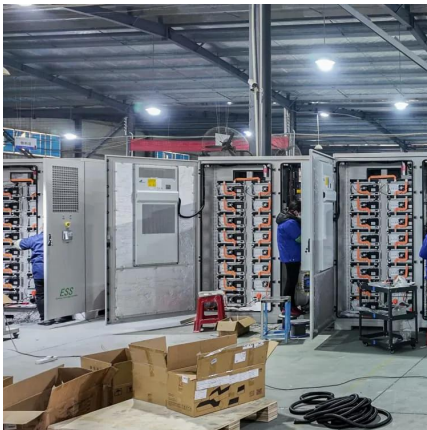
The base station's RF circuitry is housed in a small outdoor module known as a remote radio head (RRH) or remote radio unit (RRU). RRH performs all RF functions such as ...





## Mini gps antenna Manufacturer & Supplier in China

Experience quick and hassle-free setup with the Mini GPS Antenna, without sacrificing signal strength. Enjoy simple, easy, and fast installation with the Mini GPS Antenna all while ...



## The Meshtastic Base Station: Components, Setup, ...

The base station is equipped with a high-quality antenna, sufficient power supply, and often enhanced processing capabilities to ...



## COMONENTS OR 5G BASE STATIONS AND ANTENNAS

base-station connects other wireless devices  
base-station architecture includes various equipment, such as a amplifier, which converts signals from RF antennas to (baseband unit in ...



## **Quick guide: components for 5G base stations and antennas**

Understand how to choose components for your 5G base-station and antenna design which will meet technical, weather and security requirements.





## Blog -Communication Signal Tower Types & Design,Mobile Base Station

UHV (Ultra-High Voltage) transmission towers are structures designed to support high-voltage power lines for the transmission of electricity over long distances. UHV transmission systems ...

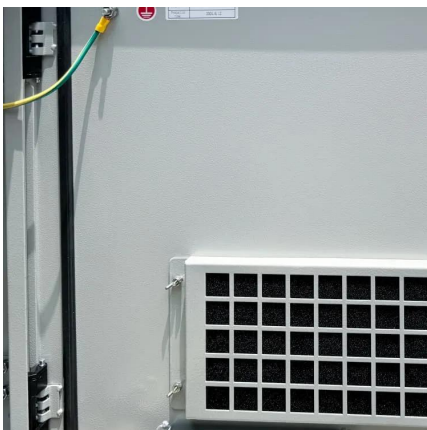


### Design of Shaped Reflector Antennas for the Applications of ...

This paper examines the radiation characteristics of a shaped reflector antenna applied as an outdoor base station antenna for mobile communications. A simpler architecture in a reflector ...

### Base stations and networks

Base station output power is relatively low The antenna output power level is typically between 20 watts and a few hundred watts for an outdoor base station. Television transmitters, by ...



### The Base Stations Networking Scheme and Spreading Code ...

However, the ground base station network has good indoor and outdoor signal coverage capability due to its good reliability, anti-interference and network exibility [1]. The Time & ...



## Contact Us

---

For catalog requests, pricing, or partnerships, please visit:  
<https://www.motheopreprimary.co.za>