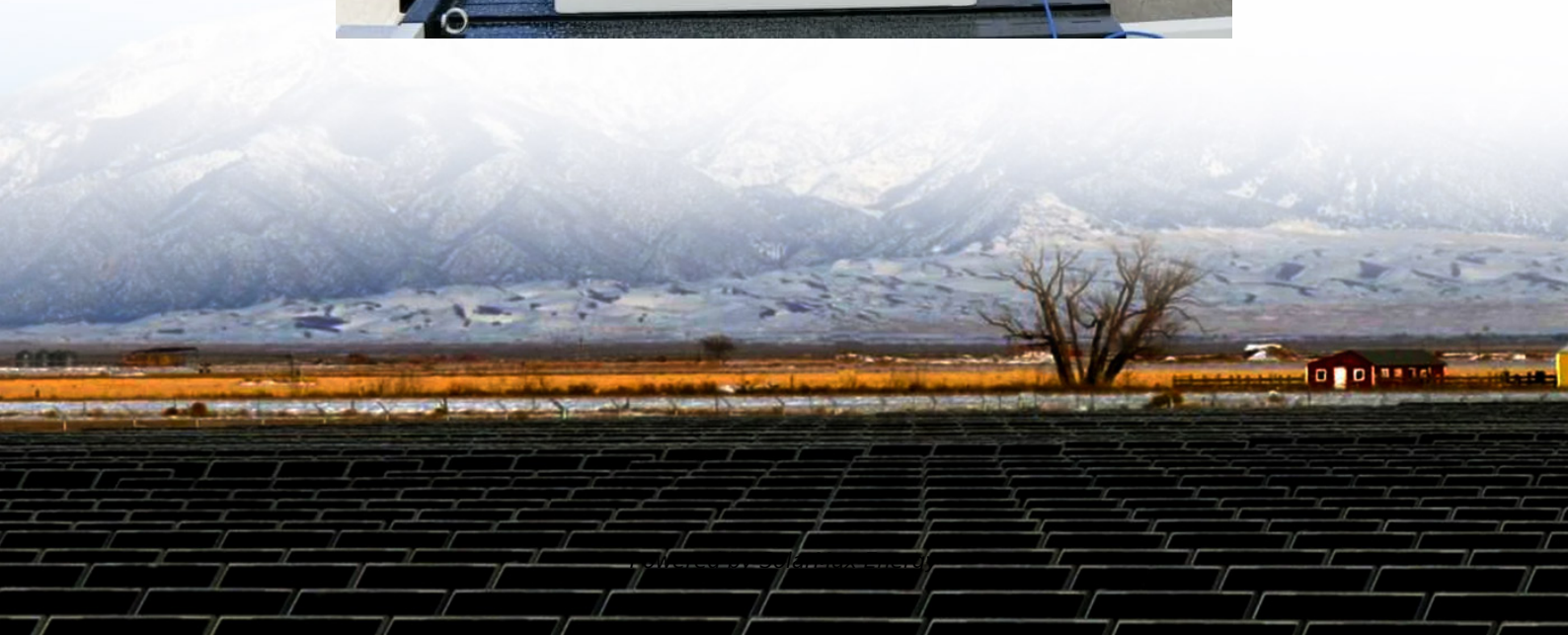


Photovoltaic panel 540 size





Overview

To give you an idea, a standard 540 watt solar panel is approximately 88 x 46 inches and tips the scales at around 72 pounds. Most modules with this output rating are monocrystalline and typically have at least 72 cells (144 half-cut cells).



Photovoltaic panel 540 size



[ADANI Bifacial 530Wp Half cut mono perc solar panel](#)

Adani ELAN SHINE Series 540Wp bifacial mono perc half cut solar panel with 21% efficiency and bifaciality Factor up to $70 \pm 5\%$. Longer Product life with ...

Datasheet

Trina Solar now distributes its PV products to over 100 countries all over the world. We are committed to building strategic, mutually beneficial collaborations with installers, developers, ...



[Standard Solar Panel Sizes And Wattages \(100W-500W ...](#)

The goal here is to get to the average solar panel size by wattage. You can find typical dimensions of 100W, 150W, 170W, 200W, 200W, 220W, 300W, 350W, 400W, and 500W solar ...



PV panels monocrystallines Silk® Plus 540-550 Wp , Futurasun

Silk® Plus reaches an high efficiency and is the latest solution for those looking for high performance solar panels for commercial and utility scale installations.



[High-Efficiency 540 watt solar panel size](#)

Go for efficient and robust 540 watt solar panel size at Alibaba for both residential and commercial uses. Buy amazing 540 watt solar panel size having mono, poly and photovoltaic ...



[Buy UTL 540W 24V Mono PERC Solar Panel at Best ...](#)

UTL 540 Watt 24 Volt Solar Panel: Mono PERC, Positive Tolerance of up to 4%, Solar cell efficiency up to 21.2%, Module Efficiency up to 18%.



[WAAREE 550Wp 144Cells 24 Volts Framed Dual ...](#)

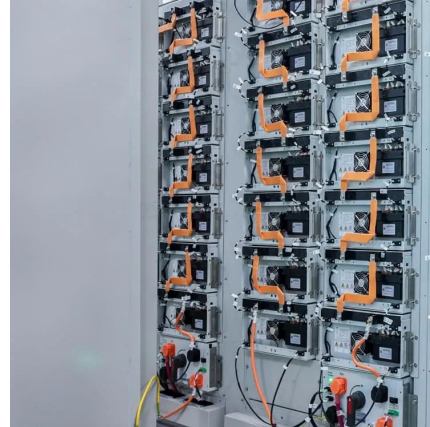
Elevate your energy with Waaree's 550Wp 144Cells Framed Dual-Glass Mono PERC Bifacial Module. Discover solar modules online at affordable prices.





540W Bifacial Mono PERC Solar Panel

Take control of your energy costs with our high-efficiency 540W monocrystalline solar panel. With a rated voltage of 41.39V and a rated current of 13.05A, this panel is designed to deliver ...



144HC M10 SL Bifacial Module

21.3% Utilizes the latest M10 size super high efficiency Monocrystalline PERC cells. Half cut design further reduces cell to module (CTM) losses.

[SanTan Solar SSM 540W Mono Bifacial Solar Panel ...](#)

Due to the size of these panels, they cannot be placed on a truck with a liftgate. They have to be shipped to a location with a dock or forklift. Features: ...



[SanTan Solar SSM 540W Mono Bifacial Solar Panel Grade B](#)

Due to the size of these panels, they cannot be placed on a truck with a liftgate. They have to be shipped to a location with a dock or forklift. Features: Specifications: These new SanTan Solar ...



540 Watt Solar panels for sale , Prices, dimensions, weight, ...

540 Watt Solar panels' range of prices, dimensions, sizes, voltage output, specifications datasheets Ranges of information Voltage: 31.1V ~ 66V Amp: 8.19A ~ 17.36A



Photovoltaic panel 540 size and weight

To give you an idea, a standard 540 watt solar panel is approximately 88 x 46 inches and tips the scales at around 72 pounds.

Solar Panel Size & Weight Guide [+ Charts] - Solartap

It's natural to have questions about solar panel size when determining how many you can fit on your property. Generally, each panel is 66 inches by 40 inches.



Photovoltaic 540 Panel Size and Weight Key Insights for Solar ...

Understanding the photovoltaic 540 panel size and weight helps optimize solar system design for space efficiency and structural safety. With advancing technologies and proper installation ...



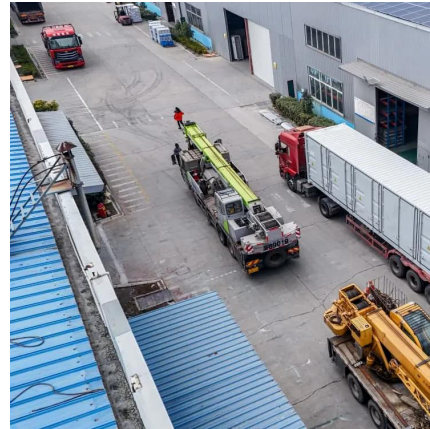
LONGi Hi-MO 5

LONGi Hi-MO 5 high-efficiency PV modules are widely used from alpine grasslands to desert wastelands, and from ponds and vegetable beds to ...



Tata Power Solar

Tata Power Solar uses its core strengths in solar cell research and development in order to produce one of the highest efficiency solar cells and modules.



540 Watt Solar Panels

Size of 540 watt solar panels To give you an idea, a standard 540 watt solar panel is approximately 88 x 46 inches and tips the scales at around 72 pounds. Most modules with ...



[WAAREE 540Wp 144 Cells 24 Volts Mono PERC Solar Module](#)

Shop.Waaree offers 540Wp 144 Cells Mono PERC DCR Solar Module at reasonable prices. Discover the Versatile and Lightweight Design of this Advanced Solar Panel.



Elan Series ASB-M10-144-520-545 - SolarFeeds

Introducing the Elan Series ASB-M10-144-520-545 by Adani Solar, an exceptional solar panel that represents a remarkable blend of cutting-edge technology and unmatched performance. This ...



540W Bifacial Mono PERC Solar Panel

Take control of your energy costs with our high-efficiency 540W monocrystalline solar panel. With a rated voltage of 41.39V and a rated current of 13.05A, this ...

540Wp / Mono: NBJD540

Solar Panel 540Wp / Mono: NBJD540 144 half-cell bifacial double glass solar panel designed for large free-field photovoltaic systems, optimized for long ...



Standard Solar Panel Sizes And Wattages (100W ...

The goal here is to get to the average solar panel size by wattage. You can find typical dimensions of 100W, 150W, 170W, 200W, 200W, 220W, 300W, 350W, ...



Bluebird 540 Watt Half Cut Solar Panels

What is 540W Half Cut Solar Panels? A 540W Half-Cut Solar Panel refers to a photovoltaic panel that has a power output of 540 watts and employs a "half-cut" cell design. In a half-cut design, ...



PV panels monocrystallines Silk® Plus 540-550 Wp

Silk® Plus reaches an high efficiency and is the latest solution for those looking for high performance solar panels for commercial and utility scale installations.

Contact Us

For catalog requests, pricing, or partnerships, please visit:
<https://www.motheopreprimary.co.za>