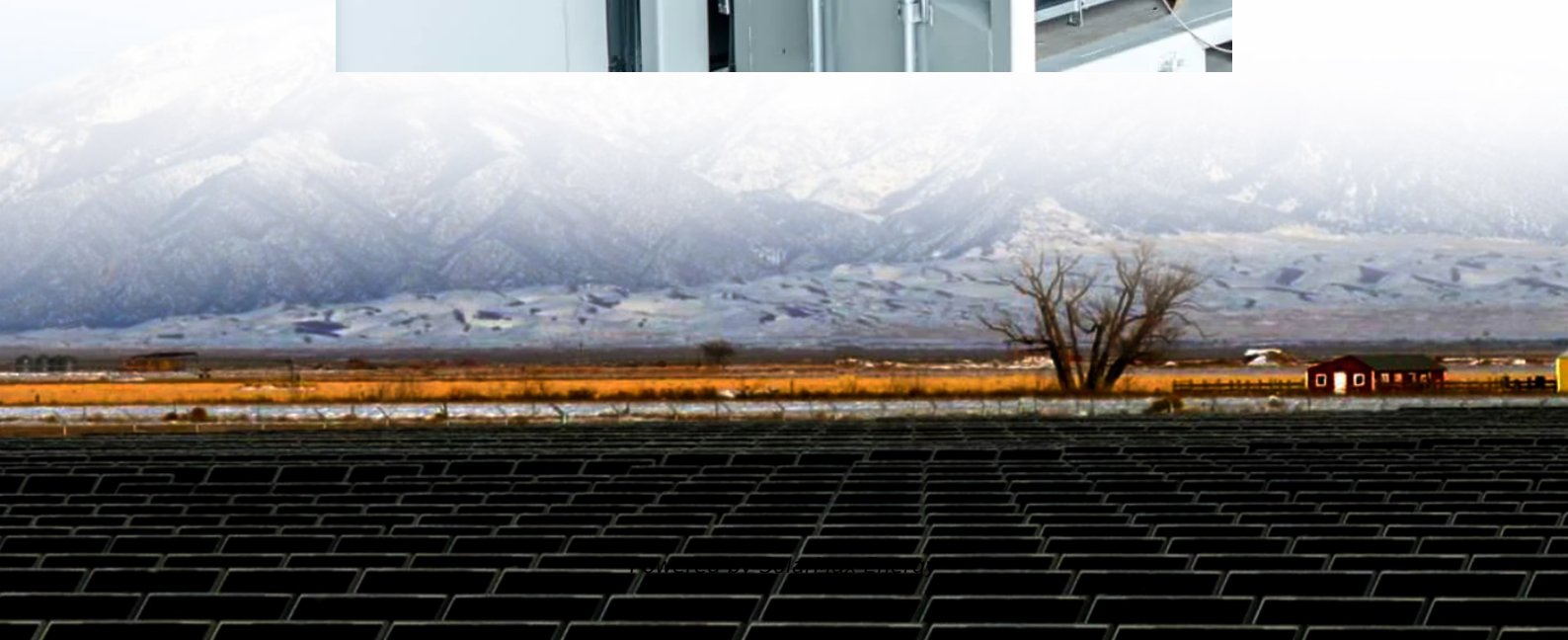


Photovoltaic panels extend beyond the roof





Overview

Should solar panels be installed away from the roof edge?

Installing away from the roof edge reduces wind loading on the panels and makes them less likely to be damaged or even torn off in a storm. I looked at five different manufacturers of solar roof mounting systems and was able to find Australian installation guidelines for four of them.

Should PV panels be placed on residential roofs?

Paths for fire and rescue. Placing PV panels on residential roofs is a balancing act between getting the most possible wattage and creating safe pathways for first responders who may have to climb the roof in an emergency.

Are solar panels allowed on a roof?

Depending on the roof mounting system used to attach the panels, there may be 'exclusion zones' where no solar panels are allowed. These zones exist because winds are strongest around the edges of roofs. Installing away from the roof edge reduces wind loading on the panels and makes them less likely to be damaged or even torn off in a storm.

Can a solar panel slide off a roof?

A quick slide down a bank of solar panels and off the roof is likely just as deadly as braving the smoke-filled path through the house. To remove the chances of encountering such a dilemma, there has to be a safe path from the EERO to the edge of the roof.

Can solar panels be installed on a metal roof?

Their PV-ezRack SolarRoof system can be used to mount solar panels on metal and tile roofs with slopes from 0 to 60 degrees. The interesting thing about Clenergy's exclusion zones is it doesn't seem to have any. There's no mention of them in its installation guide or this brochure.



Can solar panels be placed over plumbing vents?

The code now recognizes that plumbing vents may be in the way, but they can actually share the space with solar panels. A complete rewrite of IRC section P3103.1 regarding rooftop DWV terminations now specifically allows solar panels to be placed over the top of plumbing vents.



Photovoltaic panels extend beyond the roof



Can solar panels extend past roof?

One common question that arises during the planning and installation process is whether solar panels can extend past the edge of the roof. The answer to this question ...

How Long Do Solar Panels Actually Last?

Do solar panels go bad? What is a solar panel's typical life expectancy? Can you do anything to make them last longer? We answer these questions - and more.

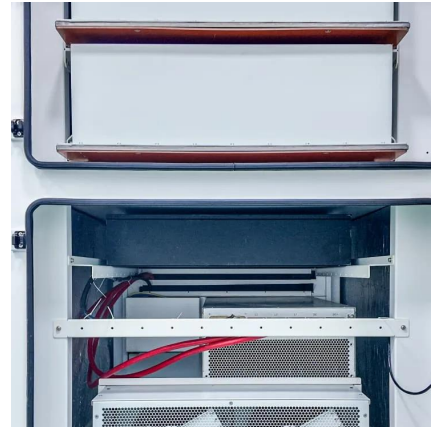


Panel overhang past roof edge

Code aside, is there a general rule of how much a panel can overhang the roof edge (pitched roof on building, not on a mobile vehicle). The panel would be on racks that ...

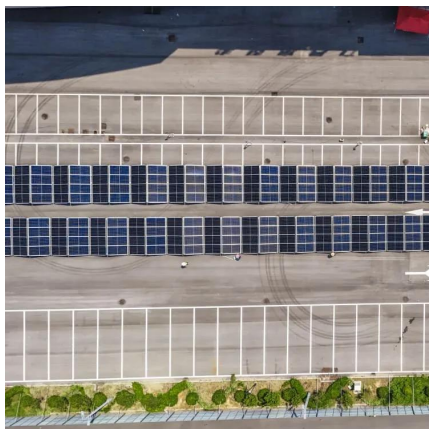
Rules for Rooftop Solar

Placing PV panels on residential roofs is a balancing act between getting the most possible wattage and creating safe pathways for first responders who ...



Can solar panels extend past roof?

One common question that arises during the planning and installation process is whether solar panels can extend past the edge of the ...



Understanding PV Roof Panels: An In-Depth Tutorial on ...

Overview PV roof panels, or photovoltaic panels, are essential for converting sunlight into electricity, offering homeowners significant energy savings and environmental ...



[Module 10 qs add Flashcards , Quizlet](#)

Study with Quizlet and memorize flashcards containing terms like 1. A 80Ah battery from which 40Ah has been withdrawn has undergone a DOD of a. 10 percent b. 40 percent c. 50 percent ...



Beyond the Horizon: How Far Can You Extend Solar Panels from ...

To maximize the solar power potential of your house, you may consider extending your solar panel system beyond the traditional roof-mounted setup. Here are three options for ...

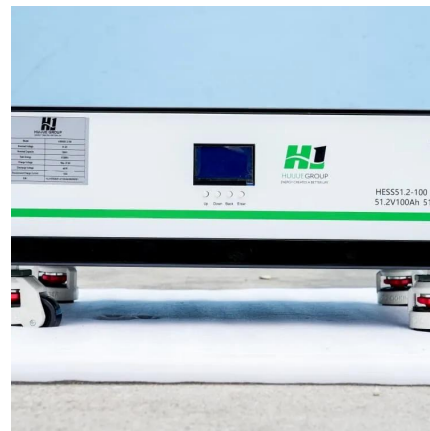


Rules for Rooftop Solar

Placing PV panels on residential roofs is a balancing act between getting the most possible wattage and creating safe pathways for first responders who may have to climb the roof in an ...

Solar Racking Made Simple: What You Need to Know About

Installing a solar energy system can be a challenging task. A home solar panel installation will include up to or more than a thousand parts so gathering the right component parts can take a ...



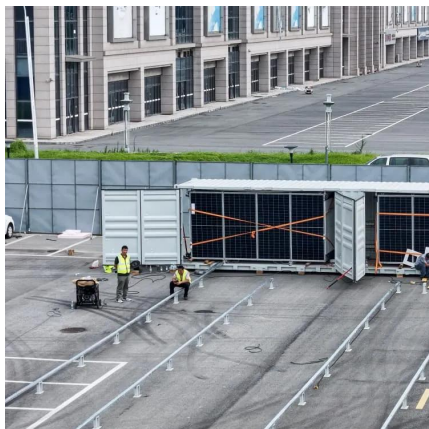
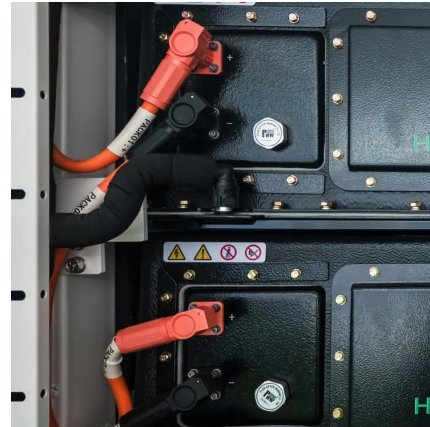
Can solar panels be installed anywhere on the roof?

In any case, panels shouldn't extend beyond the edge of the roof. A quality installation will never look like this: Installers need to follow the guidelines provided by the manufacturers to conform ...



Is it acceptable for solar panels to extend beyond the ridge of a

Is it acceptable for solar panels to extend beyond the ridge of a sloped roof? There are a couple of reasons not to extend a PV array above the ridge of a sloped roof. The most important reason ...

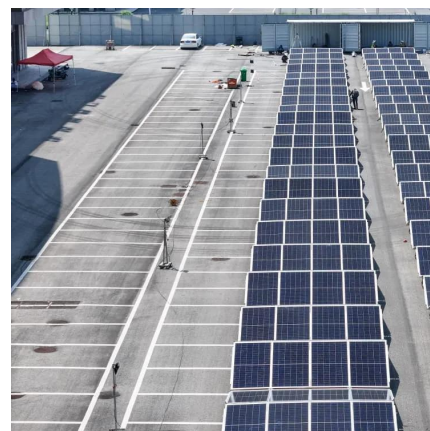


[Can you easily extend solar panels over the roof?](#)

In this article, we will explore the feasibility, benefits, and challenges associated with extending solar panels over the roof. Extending solar panels over the roof ...

[Question regarding PV Panel on the roof overhang](#)

Folks, after I provide 3 ft at the ridge for the first responder, the layout I have done brings the panel over to that portion of the roof that overhangs the house beyond the attic vent ...



[Solar Panel Life Expectancy , How to Extend It in 2025](#)

Learn how long solar panels last and discover proven ways to extend their lifespan. Expert tips for better energy savings.



How close can solar panels be to the edge of the ...

In most cases, solar panels are required to have a minimum of 18 inches of recoil from the roof ridge and may also require a three-foot path ...



Roof Design Considerations When Incorporating Solar ...

There are many important considerations for commercial building solar roof system design and panel layout.

Do Solar Panels Cool Your Roof?

Discover the surprising cooling benefits of solar panels on your roof. Explore heat management solutions and energy efficiency with solar power.



Do solar panels extend the life of a roof by protecting it from

Among these questions, the potential for solar panels to extend the life of a roof by providing a protective shield from various elements, particularly ultraviolet (UV) rays, is both interesting ...



Solar Panel Building Regulations & Planning ...

When do solar panels require planning permission? Which building regulations apply? How long does the approval process take?



Is it legal for photovoltaic panels to extend beyond the roof

Installing a solar energy system can be a challenging task. A home solar panel installation will include up to or more than a thousand parts so gathering the right component parts can take a



Mountings

The mounting rails should be spaced apart as above. For example, using a 1.6m high panel, the rails should be spaced approx. 0.8m apart and the panels should be clamped so that they ...



PV panels as close to gutter?

You'll find an article (diagram 4 and table 1) that shows the minimum required setback distance between the bottom edge of the panels and your gutter. You'll need to know ...



How close to the edge of your roof can your solar panels go?

Ideally solar panels should not be installed right up to the edges of your roof. But how much space should be left exactly?



Can you easily extend solar panels over the roof?

In this article, we will explore the feasibility, benefits, and challenges associated with extending solar panels over the roof. Extending solar panels over the roof is indeed possible and ...



AONB GUIDANCE - Solar Panels

Planning Requirements There are two types of solar panel. Photovoltaic panels or tiles generate electricity from the sun's energy. Solar panels or collectors (flat plate or evacuated tubes) use ...



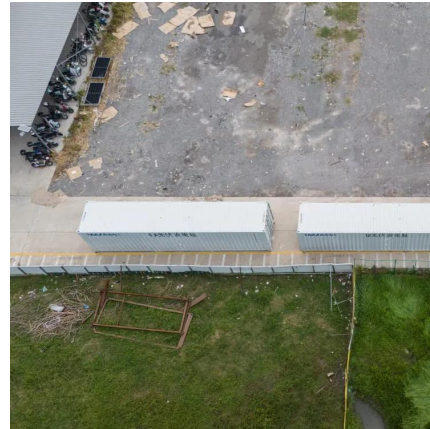
Beyond the Horizon: How Far Can You Extend Solar Panels from ...

Discover how far solar panels can extend from your house! From ideal placement to wiring considerations, find the perfect setup for maximum solar power.



Roof Top Rail System

What is the best distance between the roof rack rails? In this video, he says you have to measure a distance between the holes in the solar panel, and use that distance in ...



How close to the edge of your roof can your solar panels go?

To maximize the solar power potential of your house, you may consider extending your solar panel system beyond the traditional roof-mounted setup. Here are three options for ...

Contact Us

For catalog requests, pricing, or partnerships, please visit:
<https://www.motheopreprimary.co.za>