

Proper charging of lithium battery pack





Overview

Proper charging requires using the right chargers, monitoring temperature, avoiding overcharging, and maintaining charge levels between 20-80% for optimal longevity.



Proper charging of lithium battery pack



What Are the Correct Charging Methods for Lithium Battery Packs?

Proper charging is essential for ensuring their optimal performance, longevity, and safety. This article explains the correct charging methods for lithium battery packs, using 2025 industry ...

[Electric Bike Charging Guide: Safe, Smart & Simple ...](#)

Understanding your e-bike battery's type, capacity, and specifications helps you make smarter choices about charging, range, and ...



[How to Charge a Lithium Ion Battery: 5 Tips to ...](#)

Learn how to charge lithium-ion batteries safely and efficiently with these expert tips to boost their performance and expand their lifespan.



[When Is the Ideal Time to Charge Lithium Ion Batteries?](#)

Proper charging is crucial because lithium-ion batteries degrade over time. Factors like high temperatures, overcharging, or letting the battery discharge completely can ...



How to Charge a Lithium-Ion Battery Properly: Step-by-Step Guide

In this guide, we'll walk you through the best practices for charging lithium-ion batteries, debunk common myths, and offer tips to keep your devices running efficiently for the ...



How to Properly Charge Lithium-ion Batteries for Maximum Life

Keep battery temperature steady and avoid charging below 0°C to prevent damage and improve safety. Follow proper charging steps like constant current then constant voltage ...



[How to Properly Charge Lithium-ion Batteries for ...](#)

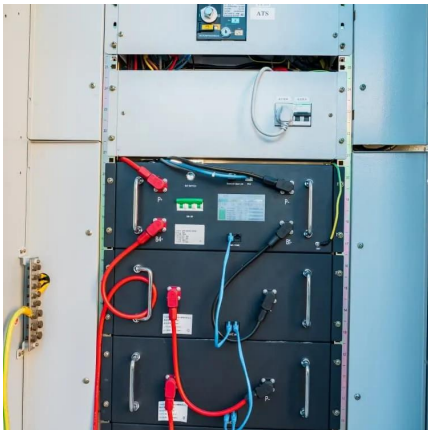
Keep battery temperature steady and avoid charging below 0°C to prevent damage and improve safety. Follow proper charging steps like ...





[Optimal Lithium Battery Charging: A Definitive Guide](#)

Unlock the secrets of charging lithium battery packs correctly for optimal performance and longevity. Expert tips and techniques revealed in our ...



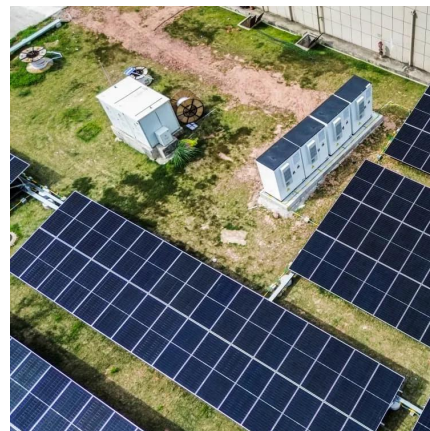
Best Practices for Charging, Maintaining, and Storing Lithium ...

Properly maintaining and caring for your lithium-ion batteries can mitigate the effects of battery aging. By implementing storage guidelines, charging practices, and avoiding excessive ...



[Explain Charging and Discharging of Lithium-Ion Battery](#)

Learn how lithium-ion batteries charge and discharge, key components, and best practices to extend lifespan. Discover safe charging ...



[Optimal Lithium Battery Charging: A Definitive Guide](#)

Unlock the secrets of charging lithium battery packs correctly for optimal performance and longevity. Expert tips and techniques revealed in our comprehensive guide.



The Right Way to Charge Your Lithium Battery Pack

Better lithium-ion batteries to the battery charging method are to provide a constant current of $\pm 1\%$ pressure limiting until the battery is fully charged and ...



What Voltage Should I Charge A Lithium-Ion Battery? Safe ...

Lithium-ion batteries typically charge to 4.20V per cell, with a tolerance of $\pm 50\text{mV}$. Nickel-based varieties usually charge to 4.10V per cell. For high-capacity lithium-ion batteries, ...

The Right Way to Charge Your Lithium Battery Pack

All along, people's focus remains on increasing the capacity of the lithium-ion battery pack, longer battery life, more charge cycles or more security more ...



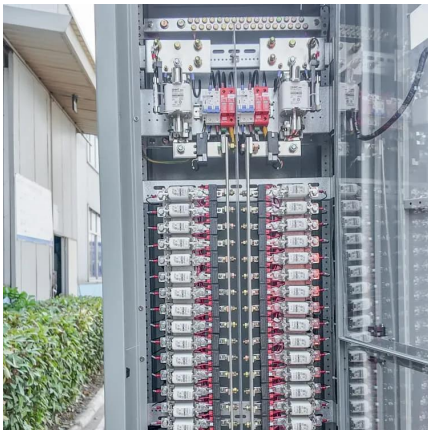
How to Charge a LiFePO4 Battery

Learn how to charge a LiFePO4 battery for optimal performance and longer life. Avoid mistakes and use the right charger for safe, reliable power.



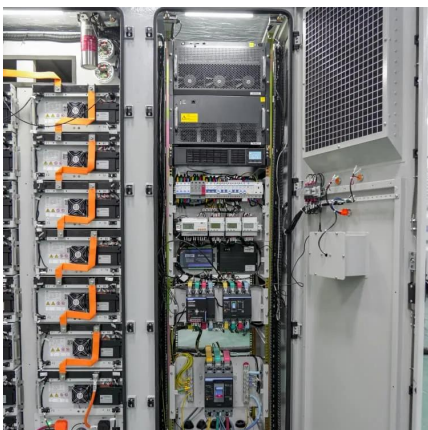
[The Complete Guide to Lithium Battery Charging - ...](#)

It should go without saying, but a battery is only as useful as its charging capabilities--and your understanding of your charging needs. To get ...



[The Right Way to Charge a Lithium Battery Pack](#)

Charging lithium battery packs correctly is essential for maximizing their lifespan and ensuring safe operation. This guide will provide you with in-depth, step-by ...



What Are the Basic Correct Charging Methods for Lithium Battery Packs

Lithium battery packs are widely used in various applications, from electric vehicles to renewable energy storage systems. Proper charging is crucial for ensuring their optimal performance, ...



[How to Charge a Lithium Battery Pack?](#)

Charging a lithium battery pack properly is crucial for maintaining its performance and longevity. Here's a step-by-step guide on how to do it safely and effectively:



[The Right Way to Charge a Lithium Battery Pack](#)

Charging lithium battery packs correctly is essential for maximizing their lifespan and ensuring safe operation. This guide will provide you with in-depth, step-by-step instructions on how to ...



[The Right Way to Charge Your Lithium Battery Pack](#)

Better lithium-ion batteries to the battery charging method are to provide a constant current of $\pm 1\%$ pressure limiting until the battery is fully charged and stop charging. Charging voltage ...



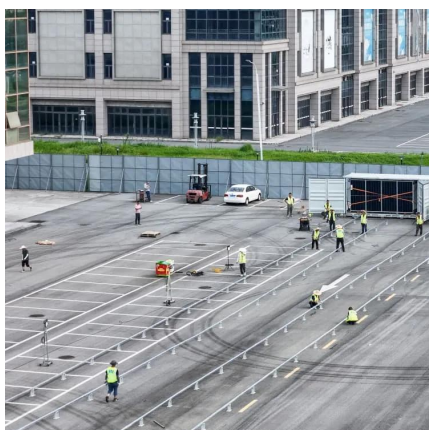
How to Charge Lithium Batteries: Best Practices for Longevity and

Charging lithium batteries correctly is crucial for maximizing their lifespan and ensuring safety. Following best practices can help prevent damage, enhance performance, ...



[How to Charge a Lithium Battery Like a Pro in 2025?](#)

Want to know how to charge a lithium battery like a pro? Discover 7 charging methods and additional tips for safe, efficient, and long-lasting performance.





[Safe Charging Tips for X2 Power Lithium Battery](#)

Learn how to safely charge your X2 Power Lithium Battery with step-by-step instructions. Follow these tips to maximize performance and ...



[Optimal Charging Voltage for Lithium Batteries Guide](#)

Discover the optimal charging voltages for lithium batteries: Bulk/absorb = 14.2V-14.6V, Float = 13.6V or lower. Avoid equalization (or set ...

[How to Properly Connect and Charge Lithium Batteries?](#)

Proper lithium battery charging requires understanding electrochemical tolerances, connector physics, and smart charging dynamics. Implementing verified connection protocols, ...



How to Charge Lithium Batteries: Complete Guide to Safe and ...

The optimal charge range for most lithium battery applications falls between 20% and 80% state of charge, though specific recommendations may vary depending on battery ...



What Are the Correct Charging Methods for Lithium Battery Packs?

Lithium battery packs are a common type of rechargeable battery used in various applications, from consumer electronics to electric vehicles. Proper charging is crucial for ensuring their ...



Contact Us

For catalog requests, pricing, or partnerships, please visit:
<https://www.motheopreprimary.co.za>