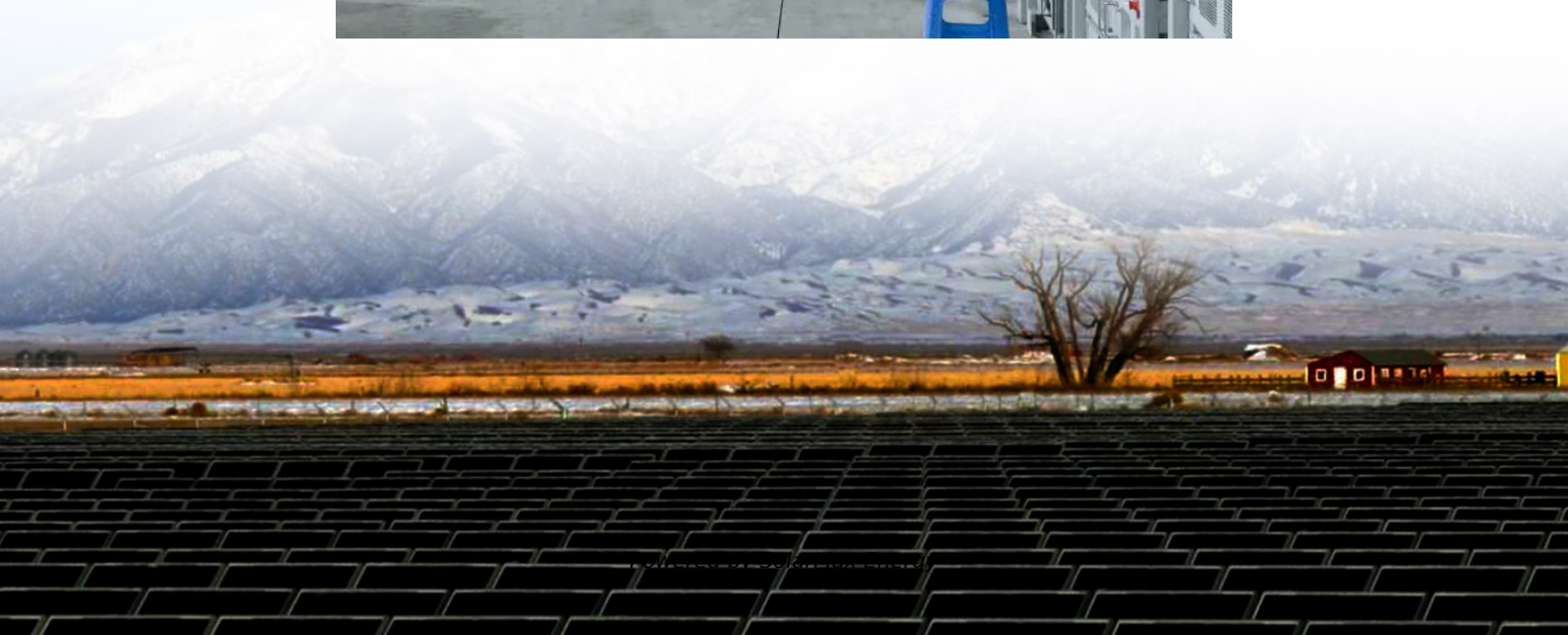


# Solar panel installation angle





## Solar panel installation angle

---



### Optimal Solar Panel Angle: Maximizing Efficiency and Energy ...

South-facing solar panels typically yield the highest energy production, while east-west facing roofs can still be effective. The direction of your solar panels is generally more ...

### The Best Angle for Solar Panel Installation

In general, solar panels should be installed so the sunlight hits them at as close to a perpendicular 90-degree angle for as long as possible ...



### Roof Pitch for Solar Panels Calculator

Roof Design and Solar Panel Installation  
Understanding Roof Slopes The slope or pitch of a roof plays a significant role in determining the most efficient ...



### Solar Panel Tilt Angle Calculator

To maximize efficiency and reduce energy costs, you'll want to find the best solar panel tilt angle for your solar power system. When the sun is lower in the sky, ...



## Which Solar Panel Angle Is Best?

Discover the best angle for your solar panels and what to do if your roof is not at the perfect pitch to maximise solar energy production.



## [What's the Best Angle for Solar Panels? , EnergySage](#)

For maximum output, the sweet spot for solar panels in the continental U.S. is facing roughly south and tilted between 15 and 40 degrees, according to the Department of ...



## [What's the Best Angle for Solar Panels to Get ...](#)

To enable this interaction, it's generally wise to point solar panels perpendicular to the sun's rays. However, unlike direction, tilt angle varies ...







## How to Calculate Solar Panel Tilt Angle?

The solar panel angle calculator latitude refers to the latitude of the installation location used in the calculation of the optimal tilt angle for a solar panel which further helps in ...



## **How to Find the Best Orientation and Angle of Solar Panels?**

Ideally, the angle of your solar panels should be equal or close to the latitude of where they are installed. As you go further north or south, the angle of the sun in the sky decreases. To ...

## **Solar Orientation Calculators: Finding the Best Angle ...**

Discover how to use a solar orientation calculator for optimal solar panel angles and tilt. Maximize efficiency and save on energy costs.



## The Best Angle for Solar Panel Installation

In general, solar panels should be installed so the sunlight hits them at as close to a perpendicular 90-degree angle for as long as possible during the day. To achieve that goal, ...



## Solar Panel Tilt Angle Calculator

Calculate the best tilt angle for your solar panels based on your location (address, city, or zip code) with our free solar panel tilt angle calculator.



### Which Direction Solar Panels Should Face in South ...

Optimal Tilt Angle: The recommended tilt angle for solar panels in South Africa is between 20 to 35 degrees. This angle allows for effective ...

## What's the Best Angle for Solar Panels to Get Maximum Output?

To enable this interaction, it's generally wise to point solar panels perpendicular to the sun's rays. However, unlike direction, tilt angle varies depending on the seasons. Even ...



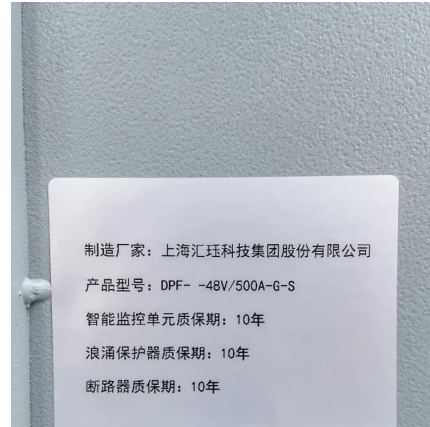
### Optimal Solar Panel Angle: Maximizing Efficiency and ...

South-facing solar panels typically yield the highest energy production, while east-west facing roofs can still be effective. The direction of ...



## Solar Panel Angle: Definition, and How to Calculate

Solar panel angle is the tilt at which a solar panel is installed. Installing solar energy is more cost-effective and energy-efficient if you select the right angle for the solar panels.



## **Solar Panel Tilt Angle Calculator**

To maximize efficiency and reduce energy costs, you'll want to find the best solar panel tilt angle for your solar power system. When the sun is lower in the sky, solar panels need a greater tilt ...

## What is the best angle for solar panels - Expert Tips

This guide breaks down the best angles, how they work with the sun's path, and practical tips to set up your panels smartly. What is the best angle for solar panels? The best ...



## **What Should Be The Best Angle For A Solar Panel Installation?**

Many families have decided to generate electricity through solar panel installation. They are ready to invest their money to buy solar panels for their homes, but they usually ...





## Solar Panel Angle Calculator

Our solar panel angle calculator takes the guesswork out of panel positioning, suggesting panel tilt angles based on your location's latitude and your willingness to reposition based on the ...

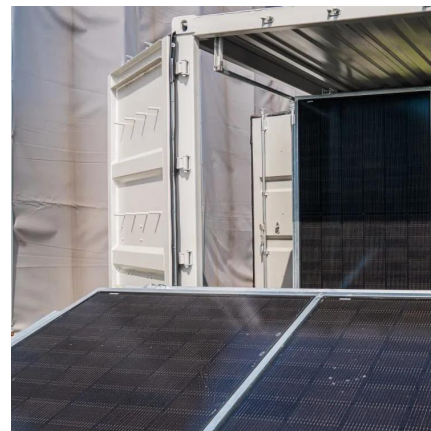


## Best Angle And Orientation For Solar Panels - Forbes ...

For most homeowners, the ideal angle for a solar panel installation is close to or equal to the latitude of your home. This angle is typically ...

## How to Determine the Best Solar Panel Angle by Location: A ...

The best solar panel angle by location is determined by factors such as geographic latitude, seasonal changes, and local climate conditions, which significantly influence sunlight ...



## [What's the Best Angle for Solar Panels? \\_ EnergySage](#)

For maximum output, the sweet spot for solar panels in the continental U.S. is facing roughly south and tilted between 15 and 40 degrees, ...



## [Optimal Tilt Angle for Solar Panels Calculator](#)

Calculate the optimal tilt angle for your solar panels to maximize energy efficiency based on location, season, and panel type with our easy-to-use calculator.



## [Solar Panel Installation Guide: Complete DIY and ...](#)

Solar panel installation costs range from \$15,000 to \$30,000 for an average American home, with a payback period of 6 to 10 years depending on your ...

## [How to Determine the Best Solar Panel Angle by ...](#)

The best solar panel angle by location is determined by factors such as geographic latitude, seasonal changes, and local climate conditions, which ...



## **To Tilt or No tilt: The best angle for your Solar Panels ...**

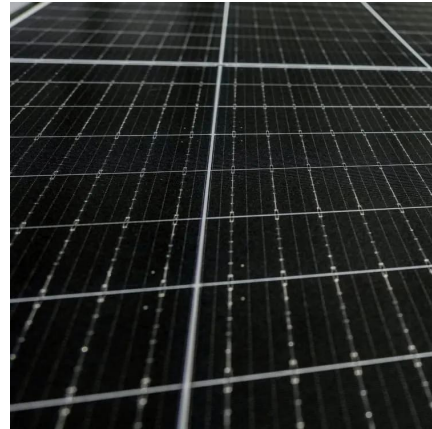
Aside from the angle, some general rules for maximizing solar panel output include positioning them on a north-facing roof and aligning them ...





## Solar Panel Tilt Angle Calculator

What Is a Solar Panel Tilt Angle? Solar panel tilt angle refers to the angle at which your solar panels are set relative to the ground, optimizing the amount of sunlight they can ...



### [Solar Panel Angle: Definition, and How to Calculate](#)

Solar panel angle is the tilt at which a solar panel is installed. Installing solar energy is more cost-effective and energy-efficient if you select ...

## Contact Us

---

For catalog requests, pricing, or partnerships, please visit:  
<https://www.motheopreprimary.co.za>