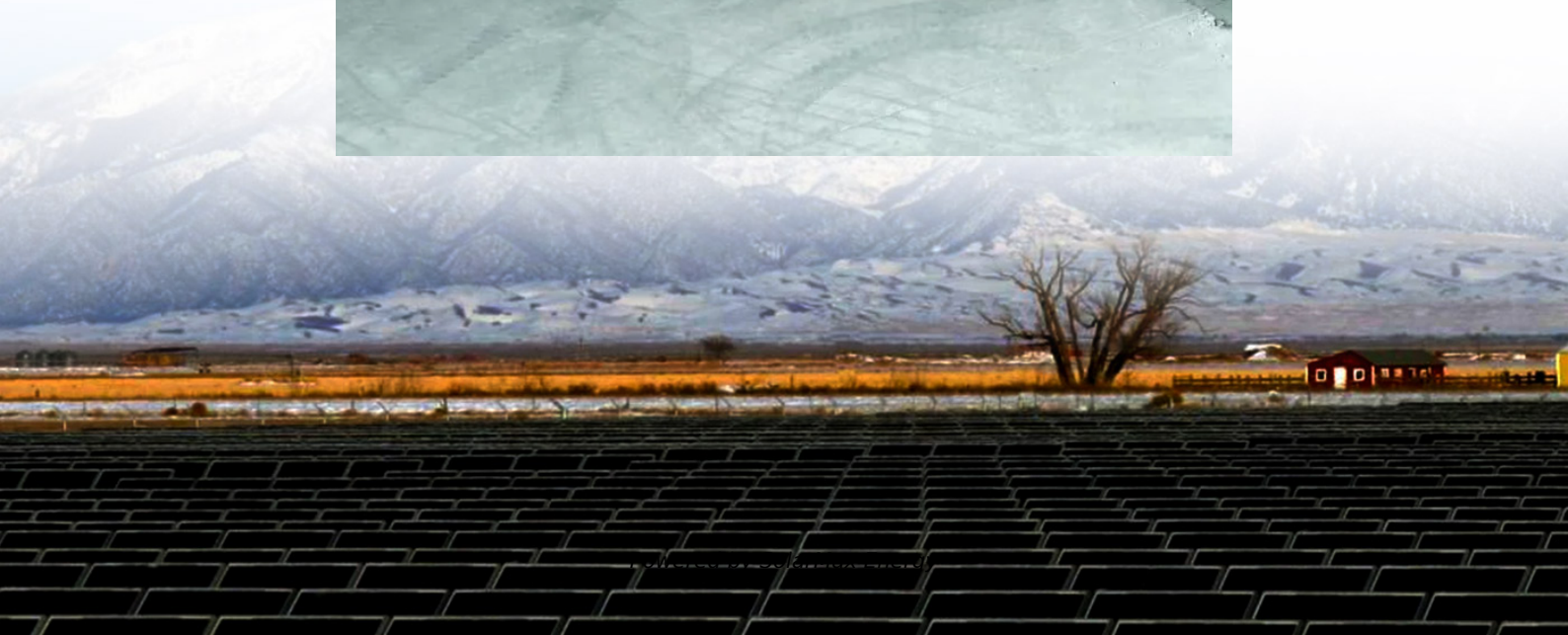


Total wind power scale of Andorra communication base stations





Overview

Can wind energy be used to power mobile phone base stations?

Worldwide thousands of base stations provide relaying mobile phone signals. Every off-grid base station has a diesel generator up to 4 kW to provide electricity for the electronic equipment involved. The presentation will give attention to the requirements on using windenergy as an energy source for powering mobile phone base stations.

How does the Global Wind Atlas work?

To discover deeper insights and make better predictions we process limited personal information such as your IP. The Global Wind Atlas is a free, web-based application developed to help policymakers, planners, and investors identify high-wind areas for wind power generation virtually anywhere in the world, and then perform preliminary calculations.

Can wind power a mobile network tower?

Initial tests showed that on windy days, more renewable energy could be generated than was consumed by site operations. In the UK, Vodafone has been working with Crossflow Energy for two years to use the latter's wind turbine technology in combination with solar and battery technologies to create a self-powered mobile network tower.

Which telecommunication services are more sensitive to wind turbines?

The telecommunication services included in this review are those that have demonstrated to be more sensitive to nearby wind turbines: weather, air traffic control and marine radars, radio navigation systems, terrestrial television and fixed radio links.

How to calculate lateral wind load?

al-side wind load $F_{lateral} = F_{w_lateral} - F_{mast(p)}$ On the lateral side, because the pole is not shielded by the antenna, the proportion of wind load



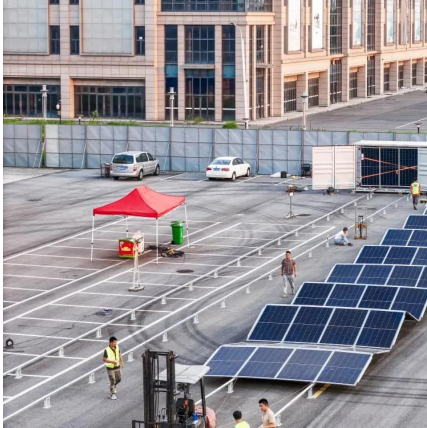
of the pole is large. Therefore, the wind load of the entire pole needs to be subtracted from wind load $F_{\text{maximal}} = F_{w_maximal} - F_{\text{mast}(p1+p2)}$ When the antenna.

What is the P-BASTA standard for antenna wind tunnel test?

applications P-BASTA Standard and Antenna Wind Tunnel Test Before 2018, the P-BASTA V9.6 standard allows antenna manufacturers to use the preceding three methods to calculate and claim antenna wind load. However, different antenna manufacturers may adopt different methods, and the obtained



Total wind power scale of Andorra communication base stations



[Global 5G Base Station Industry Research Report](#)

The total number of China's small base stations is 6 million, and Huawei's market share is 30%. QYR predicts that the scale of China's 5G base station ...

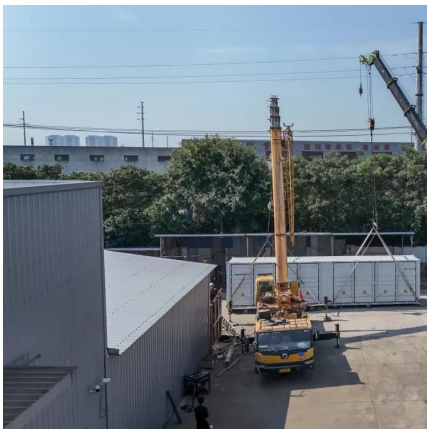
5G Base Station

5G base station is the core equipment of 5G network, which provides wireless coverage and realizes wireless signal transmission between wired communication network ...



[How to make wind solar hybrid systems for telecom ...](#)

Wind solar hybrid systems can fully ensure power supply stability for remote telecom stations. Meet the growing demand for communication services.



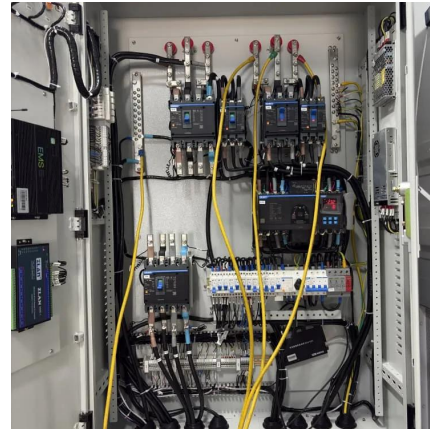
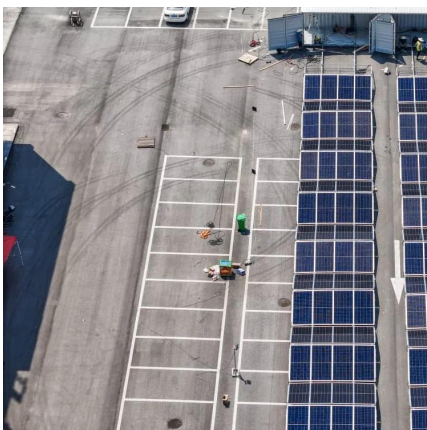
Global Wind Atlas

The Global Wind Atlas is a free, web-based application developed to help policymakers, planners, and investors identify high-wind areas for wind power generation virtually anywhere in the ...



Andorra la vella pumped storage power station

A bottom up analysis of energy stored in the world's pumped storage reservoirs using IHA's stations database estimates total storage to be up to 9,000 GWh. PSH operations and ...



Impact analysis of wind farms on telecommunication services

This paper presents a comprehensive review on the impact of wind turbines on the telecommunication services, with special dedication to the methodology to be applied in order ...



ENERGY PROFILE Andorra

ion of wind resources. Areas in the third class or above are considered to be as biomass each year. It is a basic measure of biomass productivity. The chart shows the average NPP in the country ...



Base station communication energy storage

The structure of base station provides conditions for energy storage to assist in power system frequency regulation. Although the power output of a single base station storage is limited, the ...



Optimization Control Strategy for Base Stations Based on Communication

With the maturity and large-scale deployment of 5G technology, the proportion of energy consumption of base stations in the smart grid is increasing, and there is an urgent need to ...

Global Wind Atlas

The Global Wind Atlas is a free, web-based application developed to help policymakers, planners, and investors identify high-wind areas for wind power ...



(PDF) Design of an off-grid hybrid PV/wind power ...

The study [4] has discussed the energy efficiency of telco base stations with renewable sources integration and the possibility of base stations ...



Teruel power station

Teruel power station is a retired power station in Andorra, Andorra-Sierra de Arcos, Teruel, Aragón, Spain. It is also known as Andorra power station.



[Power Consumption Modeling of 5G Multi-Carrier Base ...](#)

However, there is still a need to understand the power consumption behavior of state-of-the-art base station architectures, such as multi-carrier active antenna units (AAUs), as well as the ...

2025 Iberian Peninsula blackout

On Monday, 28 April 2025, at 12:33 CEST (11:33 WEST; 10:33 UTC), a major power blackout occurred across the Iberian Peninsula affecting mainland Portugal and peninsular Spain, ...



Installed wind energy capacity

Total wind (on- and off-grid) electricity installed capacity, measured in gigawatts. This includes onshore and offshore wind. This is the citation of the original data obtained from ...



Installed wind energy capacity

Total wind (on- and off-grid) electricity installed capacity, measured in gigawatts. This includes onshore and offshore wind. This is the citation of ...



Wind Load Test and Calculation of the Base Station Antenna

Among wind load measurement tests, the wind tunnel test simulates the environment most similar to the actual natural environment of the product and therefore is the most accurate test method.

Flying Base Stations for Offshore Wind Farm Monitoring and ...

Abstract Ensuring reliable and low-latency communication in offshore wind farms is critical for efficient monitoring and control, yet remains challenging due to the harsh environment and ...



[\(PDF\) Small windturbines for telecom base stations](#)

The presentation will give attention to the requirements on using windenergy as an energy source for powering mobile phone base stations.



[Power plant profile: Andorra Wind Farm, Spain](#)

This information is drawn from GlobalData's Power Intelligence Center, which provides detailed profiles of over 170,000 active, planned and under construction power plants worldwide from ...



Self-sufficient cell towers; when will cell sites go off-grid en masse?

As energy prices soar, ESG continues to grow in importance, and 5G's increased power demands loom, a number of cell tower owners and telco operators are looking at ...

Coal to Solar, Wind and Storage, Andorra Thermal Power Station

More than 1,487 billion euros will be invested to replace the initial 1,050 MW-capacity coal plant with 1,725 MW of renewable power, of which, 1,585 MW solar (coming from one of the largest ...



[Breaking Down Base Stations - A Guide to Cellular Sites](#)

The main power source for the majority of telecom sites is a standard grid connection. This power supply relies on various meters and ...



Optimization of Communication Base Station Battery ...

In the communication power supply field, base station interruptions may occur due to sudden natural disasters or unstable power supplies. This ...



Contact Us

For catalog requests, pricing, or partnerships, please visit:
<https://www.motheopreprimary.co.za>