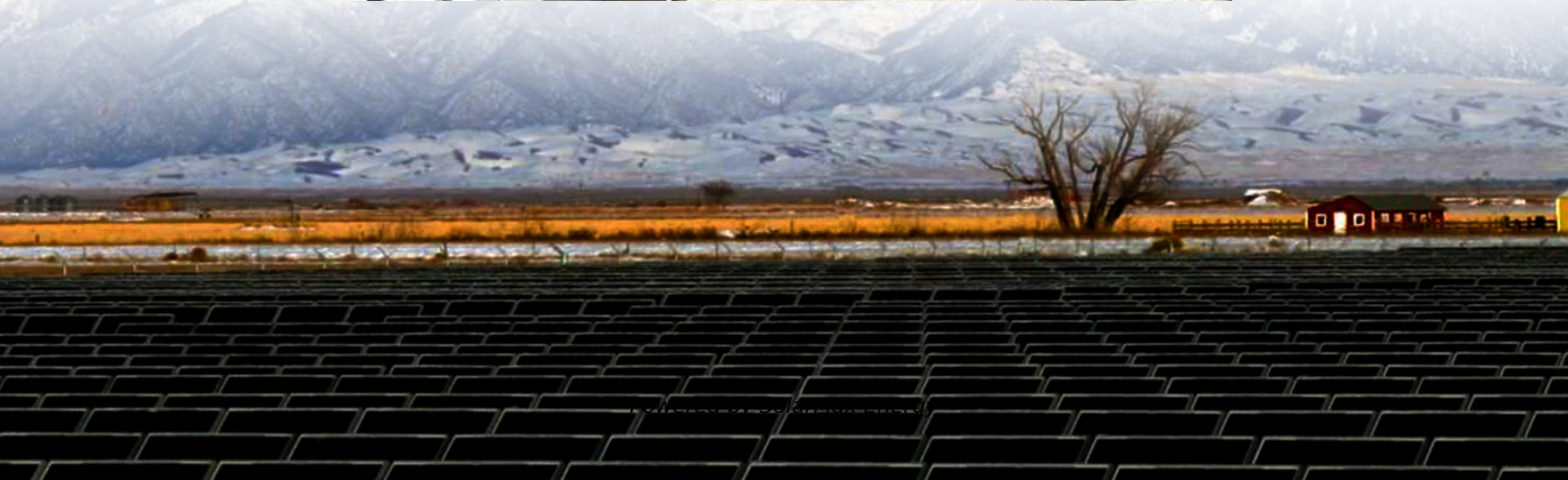


What are the locations of Georgian base station energy management system





Overview

Does Georgia Power have a new battery energy storage system?

Georgia Power has identified locations for 500 MW of new battery energy storage systems (BESS) authorized by the Georgia Public Service Commission (PSC) earlier this year as part of the company's 2023 Integrated Resource Plan (IRP) Update.

Where was Georgia Power's first Bess installed?

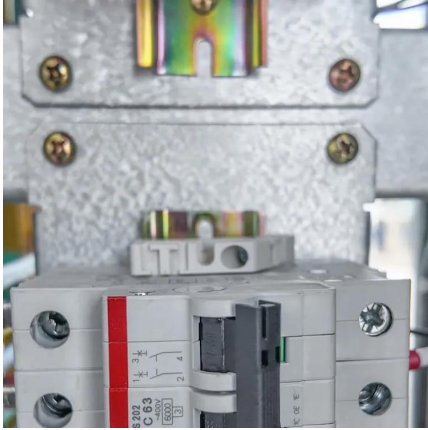
In February, Georgia Power installed its first BESS, the Mossy Branch Energy Facility, a 65 MW BESS on 2.5 acres of rural countryside in Talbot County, north of Columbus.

Is Georgia Power completing a Bess project?

In addition to the 500 MW BESS projects from the 2023 IRP Update, Georgia Power is nearing completion on the 65 MW Mossy Branch Battery Facility located in Talbot County, Georgia. Mossy Branch was approved in the 2019 IRP and will be Georgia Power's first BESS resource.



What are the locations of Georgian base station energy management



[Georgia Power Names 4 Locations for 500 MW of ...](#)

Georgia Power has identified locations for 500 MW of new battery energy storage systems (BESS) authorized by the Georgia Public Service ...

[Optimal configuration of 5G base station energy storage](#)

Abstract: The high-energy consumption and high construction density of 5G base stations have greatly increased the demand for backup energy storage batteries. To maximize overall ...



[Georgia Public Service Commission approves 500 ...](#)

In February 2024, Georgia Power installed its first grid-connected BESS, the Mossy Branch Energy Facility, a 65 MW BESS on 2.5 acres of rural ...

What is large-scale base station energy storage? , NenPower

When a base station generates more energy than it can consume or send back to the grid, energy storage can effectively harness this excess, preventing waste and optimizing ...



Base Station Energy Management in 5G Networks Using ...

Abstract: The traffic activity of fifth generation (5G) networks demand for new energy management techniques that is dynamic deep and longer duration of sleep as compared to ...



Georgia System Operations Corporation

We manage and monitor the electric generation and transmission for 38 of Georgia's electric membership corporations, which light up half the households in Georgia and cover two-thirds ...



Georgia Power Names 4 Locations for 500 MW of New Battery Energy

Georgia Power has identified locations for 500 MW of new battery energy storage systems (BESS) authorized by the Georgia Public Service Commission (PSC) earlier this year ...





Energy Management Strategy for Distributed ...

The sharp increase in energy consumption imposes enormous pressure on grid power supply and operation costs [7], thus attracting ...



Here's where Georgia is installing 500 MW of new ...

In February, Georgia Power installed its first BESS, the Mossy Branch Energy Facility, a 65 MW BESS on 2.5 acres of rural countryside in ...



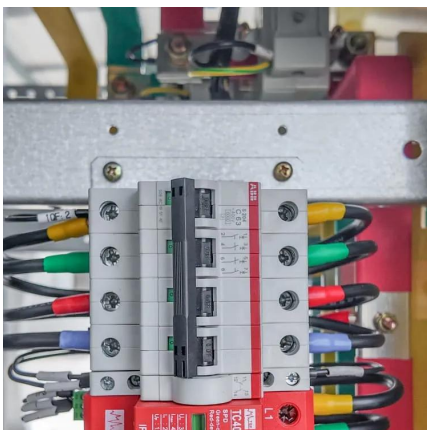
How We Operate - Georgia Transmission

We plan, build and maintain the Georgia energy grid infrastructure, ensuring our local communities have access to reliable, affordable energy. This includes more than 780 ...



Energy storage system of communication base station

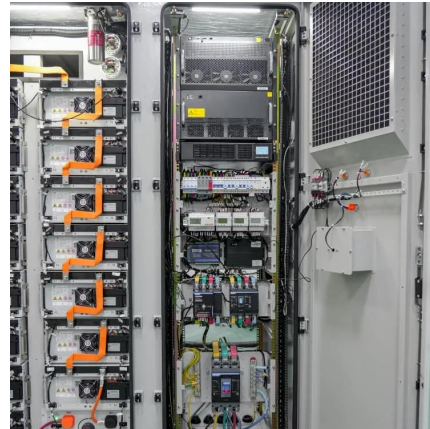
Huijue Base Station Energy Cabinet is a robust, versatile, and intelligent solution that ensures reliable power supply and efficient energy management for critical infrastructure, enabling ...





Hierarchical Energy Management of DC Microgrid with ...

To cope with the intermittency of alternate energy sources and ensure uninterrupted power to base stations, energy storage systems (ESSs) ...



Power Distribution & Delivery , Georgia Power

Learn how energy is moved throughout Georgia including the different transmission and distribution systems that comprise the energy grid.

Georgia Public Service Commission approves 500 MW of battery energy ...

In February 2024, Georgia Power installed its first grid-connected BESS, the Mossy Branch Energy Facility, a 65 MW BESS on 2.5 acres of rural countryside in Talbot County, ...



Here's where Georgia is installing 500 MW of new battery energy ...

In February, Georgia Power installed its first BESS, the Mossy Branch Energy Facility, a 65 MW BESS on 2.5 acres of rural countryside in Talbot County, north of Columbus.



BMS for Telecom Base Station BES-01

BMS for Telecom Base Station ensures reliable connectivity at remote cell towers through safe battery management and backup power solutions.

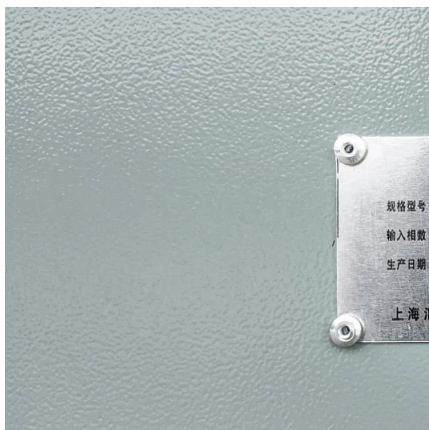


Energy Management

The Energy Manager shall train key personnel, including Unit Energy Managers, in the most effective ways to manage energy at their facilities from design to ...

Georgia Power has sites for 4 more energy-storing systems

In a filing submitted last week to regulators at the Georgia Public Service Commission, the company disclosed that it will build 500 megawatts of new battery energy ...



A technical look at 5G energy consumption and performance

How can 5G increase performance and ensure low energy consumption? Find out in our latest Research blog post.



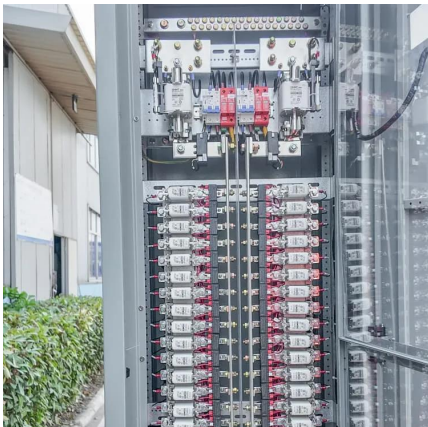
News

Mr. Jaba Khmaladze, head of JSC "Georgian Energy Development Fund", spoke about EMES - "Energy Management Electronic System" in "Rustavi 2" TV program "Business", which implies ...



[Georgia Power's first battery energy storage system ...](#)

Georgia Power leaders joined elected officials from the Georgia Public Service Commission (PSC), Georgia legislature, and Talbot and ...



[GPM Energy Management System \(EMS\)](#)

- ...

Highlights of the GPM Energy Management System (EMS) The EMS is an energy management platform responsible for controlling power absorption and ...



[Georgia Power determines locations for 500 MW of ...](#)

Georgia Power has identified locations for 500 MW of new battery energy storage systems (BESS) authorized by the Georgia Public Service ...





Locations in Georgia Where 500 MW of New Battery Energy ...

Discover where Georgia is installing 500 MW of new battery energy storage, enhancing grid reliability and supporting renewable energy growth. Explore the strategic ...

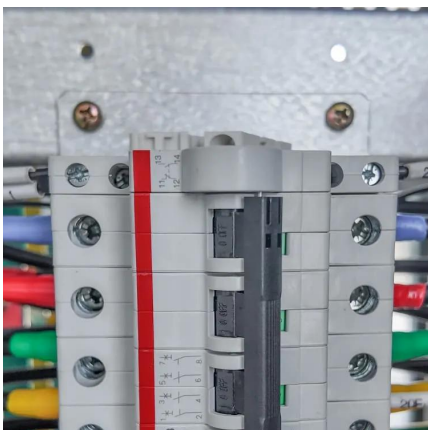


Tenders

JSC "Georgian Energy Development Fund" is searching for an investor for development and construction of the Udabno Solar Power Plant Project, which it would transfer 90% shares in ...

Georgia Power determines locations for 500 MW of new battery energy

Georgia Power has identified locations for 500 MW of new battery energy storage systems (BESS) authorized by the Georgia Public Service Commission (PSC) earlier this year ...



Where Georgia Power plans to install massive batteries next

As part of the plans revealed last Friday, Georgia Power plans to build: A 265-megawatt battery system in Cherokee County near Ball Ground. The batteries will be installed ...



Georgia Power's first battery energy storage system reaches ...

Georgia Power leaders joined elected officials from the Georgia Public Service Commission (PSC), Georgia legislature, and Talbot and Muscogee counties on Thursday to ...



Contact Us

For catalog requests, pricing, or partnerships, please visit:
<https://www.motheopreprimary.co.za>