

# **What kind of battery is used in communication base stations**





## Overview

---

Which battery is best for telecom base station backup power?

Among various battery technologies, Lithium Iron Phosphate (LiFePO<sub>4</sub>) batteries stand out as the ideal choice for telecom base station backup power due to their high safety, long lifespan, and excellent thermal stability.

Are lithium-ion batteries a good choice for a telecom system?

Lithium-ion batteries have rapidly gained popularity in telecom systems. Their efficiency is unmatched, providing higher energy density compared to traditional options. This means they can store more power in a smaller footprint.

What makes a telecom battery pack compatible with a base station?

Compatibility and Installation Voltage Compatibility: 48V is the standard voltage for telecom base stations, so the battery pack's output voltage must align with base station equipment requirements. Modular Design: A modular structure simplifies installation, maintenance, and scalability.

What type of battery does a telecom system need?

Beyond the commonly discussed battery types, telecom systems occasionally leverage other varieties to meet specific needs. One such option is the flow battery. These batteries excel in energy storage, making them ideal for larger installations that require consistent power over extended periods.

Why do telecom systems need batteries?

Telecom systems play a crucial role in keeping our world connected. From mobile phones to internet service providers, these networks need reliable power sources to function smoothly. That's where batteries come into play. They ensure that communication lines remain open, even during outages or emergencies. But not all batteries are created equal.



Are lithium-ion batteries the future of telecommunication?

With advancements continually being made in battery technology, lithium-ion remains at the forefront of innovative solutions for telecommunication needs. Nickel-cadmium (NiCd) batteries have carved out a niche in telecom systems due to their durability and reliability.



## What kind of battery is used in communication base stations

---

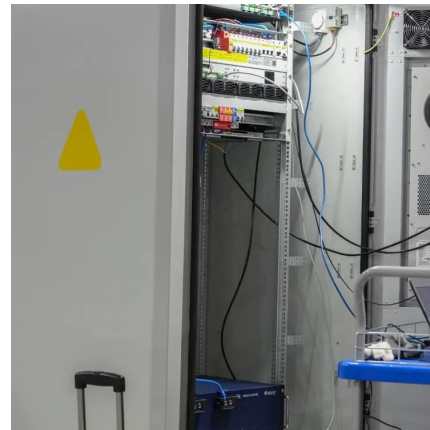


### [Optimization of Communication Base Station Battery ...](#)

In the communication power supply field, base station interruptions may occur due to sudden natural disasters or unstable power supplies. This work studies the optimization of ...

### [The 17 Best Emergency Radios for Preppers](#)

Communication is one of the most underrated skills in the preparedness world. We need communication for coordination, information, intelligence gathering, and not least of all ...



### [Types of Batteries Used in Telecom Systems: A Guide](#)

Lithium-ion batteries have rapidly gained popularity in telecom systems. Their efficiency is unmatched, providing higher energy density ...



## Which Batteries Can Be Used as Backup Power Sources for Communication

Several types of batteries can be used as backup power sources for communication base stations. The choice of battery depends on factors such as





the power requirements of the base ...

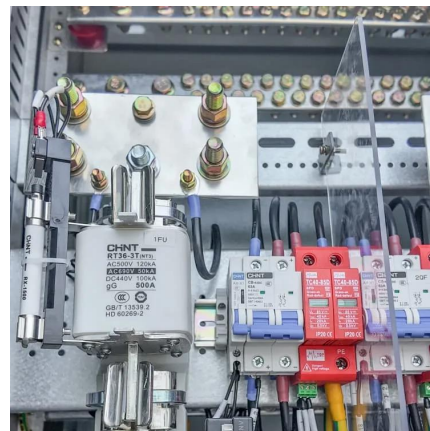


### Base Stations and Cell Towers: The Pillars of Mobile ...

Base stations and cell towers are critical components of cellular communication systems, serving as the infrastructure that supports seamless ...

### UPS Batteries in Telecom Base Stations - leagend

In today's always-connected world, telecom base stations are the backbone of communication networks, ensuring seamless connectivity for ...



### Communication Base Station Backup Power LiFePO4 ...

Why LiFePO4 battery as a backup power supply for the communications industry? 1.The new requirements in the field of ...





## Battery for Communication Base Stations Market Share and New ...

The Battery for Communication Base Stations market is segmented by type into Lead-acid battery, Lithium battery, and Other. These batteries are widely used in the ...



## Selection and maintenance of batteries for communication base ...

Focused on the engineering applications of batteries in the communication stations, this paper introduces the selections, installations and maintenances of batteries for communication ...

## What are base station energy storage batteries used for?

WHAT TYPE OF BATTERIES ARE USED IN BASE STATIONS? Base stations typically utilize varying types of batteries, with lead-acid batteries and lithium-ion batteries ...



## What Are the Key Considerations for Telecom Batteries in Base ...

Telecom batteries for base stations are backup power systems that ensure uninterrupted connectivity during grid outages. Typically using valve-regulated lead-acid ...



## Telecom Base Station Backup Power Solution: Design ...

Among various battery technologies, Lithium Iron Phosphate (LiFePO<sub>4</sub>) batteries stand out as the ideal choice for telecom base station ...



## What is a base station energy storage battery?

Base station energy storage batteries play a pivotal role in modern telecommunication networks, particularly as demand for uninterrupted service ...

## **What is a base station energy storage battery? , NenPower**

Base station energy storage batteries play a pivotal role in modern telecommunication networks, particularly as demand for uninterrupted service intensifies. ...



## **What are base station energy storage batteries used for?**

WHAT TYPE OF BATTERIES ARE USED IN BASE STATIONS? Base stations typically utilize varying types of batteries, with lead-acid ...





## Types of Batteries Used in Telecom Systems: A Guide

Lithium-ion batteries have rapidly gained popularity in telecom systems. Their efficiency is unmatched, providing higher energy density compared to traditional options. This ...

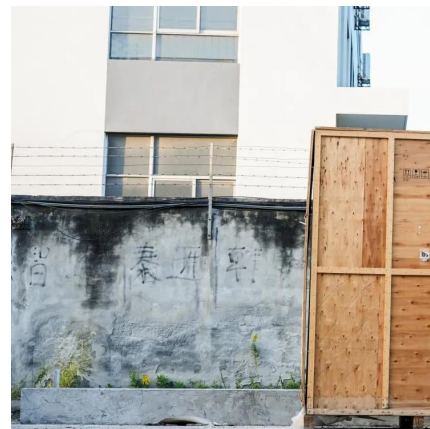


### **Global Communication Base Station Energy Storage Lithium Battery ...**

Communication base station energy storage lithium battery refers to a type of rechargeable lithium-ion battery that is specifically designed for use in communication base stations. These ...

### **Does the communication base station energy storage lithium ...**

Are lithium batteries suitable for a 5G base station? 2) The optimized configuration results of the three types of energy storage batteries showed that since the current tiered-use of lithium ...



### **What Are the Key Considerations for Telecom Batteries in Base Stations?**

Telecom batteries for base stations are backup power systems that ensure uninterrupted connectivity during grid outages. Typically using valve-regulated lead-acid ...





## Optimal configuration of 5G base station energy storage

The optimized configuration results of the three types of energy storage batteries showed that since the current tiered-use of lithium batteries for communication base station backup power ...

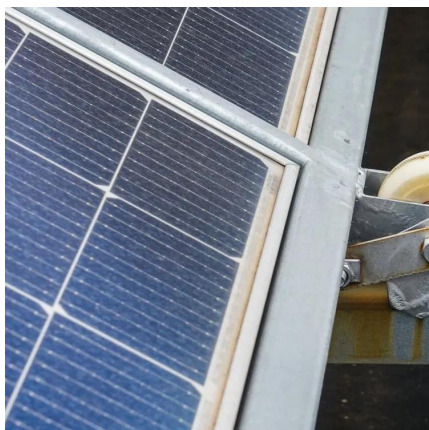


## **Types of Base Stations**

Base stations are one of the widely used components in the field of wireless communication and networks. It is an access point or base point of a ...

## **Understanding Backup Battery Requirements for Telecom Base Stations**

Telecom base stations require reliable backup power to ensure uninterrupted communication services. Selecting the right backup battery is crucial for network stability and ...



## **Battery underground chamber structure used for communication base station**

The utility model discloses a battery buried room structure for a communication base station, which is a base station battery buried room structure built underground outside a machine ...



## Understanding Lithium Battery Types: A Guide for ...

Lithium Battery Performance Comparisons  
Understanding the performance metrics of different lithium battery types requires a comprehensive analysis of ...

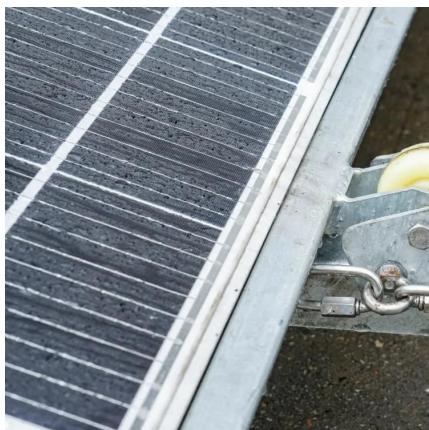


## Battery technology for communication base stations

In order to ensure the reliability of communication, 5G base stations are usually equipped with lithium iron phosphate cascade batteries with high energy density and high charge and ...

## **Selection and maintenance of batteries for communication base stations**

Focused on the engineering applications of batteries in the communication stations, this paper introduces the selections, installations and maintenances of batteries for communication ...



## UPS Batteries in Telecom Base Stations - leagend

In today's always-connected world, telecom base stations are the backbone of communication networks, ensuring seamless connectivity for mobile phones, data services, ...



## Understanding Backup Battery Requirements for ...

Telecom base stations require reliable backup power to ensure uninterrupted communication services. Selecting the right backup battery is ...



## **Telecom Base Station Backup Power Solution: Design Guide for ...**

Among various battery technologies, Lithium Iron Phosphate (LiFePO<sub>4</sub>) batteries stand out as the ideal choice for telecom base station backup power due to their high safety, ...

## **Communication Base Station Energy Storage Lithium Battery**

Global Communication Base Station Energy Storage Lithium Battery Market Size By Battery Type (Lithium Iron Phosphate, Lithium Nickel Manganese Cobalt Oxide), By Power Capacity (Below ...



## **Contact Us**

For catalog requests, pricing, or partnerships, please visit:  
<https://www.motheopreprimary.co.za>