

# Which battery BMS should I choose





## Overview

---

When selecting a BMS, consider the battery chemistry, voltage and current rating, cell count, features, safety, and cost. Make sure to choose a BMS that is designed specifically for your battery chemistry and has adequate protection features to ensure the safety of your battery. How do I choose a battery management system (BMS)?

Expert Support: Comprehensive support from conception through implementation and beyond, ensuring your systems perform optimally. Selecting the right Battery Management System (BMS) involves understanding your battery's needs and the specific features that a BMS can offer to meet those needs.

How to choose a BMS for a lithium-ion battery?

The primary job of a BMS is to prevent overloading the battery cells. So, for this to be effective, the maximum rating on the BMS should be greater than the maximum amperage rating of the battery. When choosing a BMS for a lithium-ion battery, the most important aspect to consider is the maximum current rating of the BMS.

What are the different types of battery management systems?

Battery Management Systems can be categorized based on Battery Chemistry as follows: Lithium battery, Lead-acid, and Nickel-based. Based on System Integration, there are Centralized BMS, Distributed BMS, Integrated BMS, and Standalone BMS. Balancing Techniques are categorized into Hybrid BMS, Active BMS, and Passive BMS.

What is battery management system (BMS)?

Battery Management System (BMS) plays an essential role in optimizing the performance, safety, and lifespan of batteries in various applications.

How do I choose the right battery management system?



Selecting the right Battery Management System (BMS) involves understanding your battery's needs and the specific features that a BMS can offer to meet those needs. By considering the factors outlined above, you can make an informed decision that enhances the performance and longevity of your battery systems.

#### How to choose a BMS?

Another vital aspect to keep in mind is the capacity or amp rating of your BMS. The amp rating determines how much current can flow through the system without causing damage or overheating. It's crucial to choose a BMS that can handle the maximum current requirements of your application to prevent any safety risks.



## Which battery BMS should I choose

---



### [Best Battery Monitoring Systems: A Swift Power Guide](#)

Choosing a BMS that can scale with your system is crucial for long-term success. Consider the following: Modular Design: A BMS with a modular design allows you to add or remove ...

### [Guide to Choosing the Best Battery Management ...](#)

How to Choose a Third-Party BMS: Seplos, JK, and Daly Compared If you're building your own battery pack for solar energy storage, ...



### [Your Guide to Battery Management Systems \(BMS\)](#)

A BMS is a costly investment, so choose battery management systems from reputable manufacturers with a proven track record of safety. If ...

### [How to Choose the Best BMS for Your Battery Needs](#)

To choose the best BMS, start by defining your battery type, voltage, current, and application requirements. Compare BMS features against these needs, prioritizing safety, ...



## Best BMS for LiFePO4

If you are looking for the best BMS for LiFePO4, this article will give you a good overview of the most popular battery management systems ...



## [Battery Management System \(BMS\) Tips & FAQs](#)

6. Can a 20AH battery use this BMS? Battery capacity doesn't directly correlate with current rating. Choose the board based on the motor's operating current, not just the ...



## [How to Choose a Battery Management System: A Guide](#)

When considering a battery management system (BMS), it's crucial to begin by identifying your specific energy requirements. This starts with choosing the battery type that ...

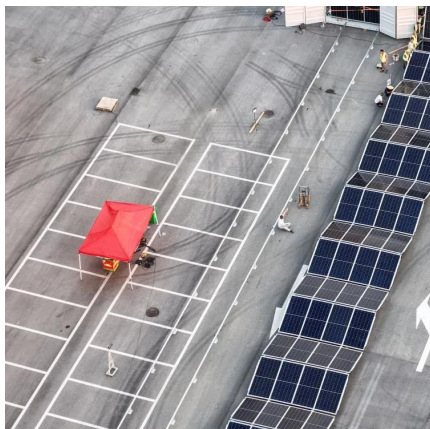






## What Is a BMS PCB Board? A Beginner's Guide to Battery ...

A BMS PCB board (Battery Management System Printed Circuit Board) is a specialized circuit board designed to monitor and protect battery packs.

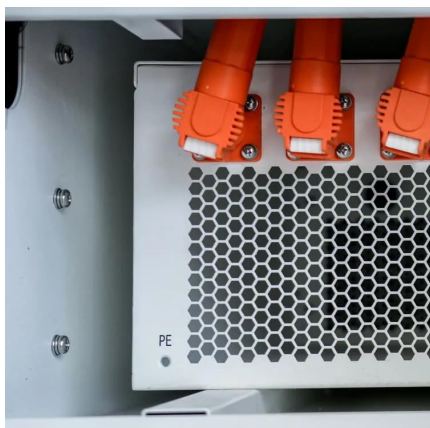


### [Comparison Overview: How to Choose from Types of ...](#)

Battery Management System (BMS) plays an essential role in optimizing the performance, safety, and lifespan of batteries in various ...

### [How do you pick the right BMS for you? Come in ...](#)

The BMS should have a communication interface to allow the user to monitor the battery's state and control its operation. This can include ...



### [What You Should Know before Buying Battery ...](#)

The popularity of lithium-ion batteries has led many people to choose lithium batteries. However, lithium batteries can not be used without a ...



## How Do You Choose the Best BMS for LiFePO4 Batteries?

The best BMS for LiFePO4 batteries is one that offers robust protection, precise cell balancing, and compatibility with your pack's voltage and current. JK Smart BMS, JBD Smart ...



## **How Do I Choose a BMS for Lithium Batteries? , Redway Tech**

Choosing a Battery Management System (BMS) for lithium batteries involves considering factors such as voltage compatibility, current rating, cell balancing capabilities, ...



## Best Battery Monitoring Systems: A Swift Power Guide

Choosing a BMS that can scale with your system is crucial for long-term success. Consider the following: Modular Design: A BMS with a modular design allows ...



## How Do I Choose a BMS for a Lithium-Ion Battery?

A BMS monitors and manages the various aspects of battery operation, including charging, discharging, and overall health. In this comprehensive guide, we will explore the key ...



## How to Choose the Right Battery Management System (BMS)

BMS selection guide: Learn how to choose the right Battery Management System. Consider voltage, current, cell balancing, and safety features.

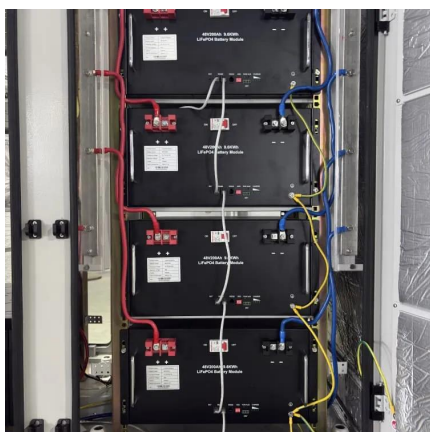


## How To Choose A BMS For Lithium Batteries

A BMS monitors and manages the various aspects of battery operation, including charging, discharging, and overall health. In this comprehensive guide, we will explore the key ...

## 3. System design and BMS selection guide

This chapter describes things to consider on how the battery interacts with the BMS and how the BMS interacts with loads and chargers to keep the battery protected. This information is ...



## How to choose BMS for lifepo4 battery cells

Determine the total voltage and cell count of your battery pack to ensure the BMS you choose can handle the voltage range. The BMS should be capable of ...





## [How to Choose the Best BMS for Your Golf Cart](#)

How to Choose the Best BMS for Your Golf Cart  
Choosing the right Battery Management System (BMS) for your golf cart is essential for optimizing battery performance, enhancing safety, and ...



## **What Amp BMS Do I Need? Sizing Battery Management Systems**

One important factor to consider when choosing a BMS is its compatibility with your battery chemistry. Different chemistries have unique charging profiles and operating conditions. ...

## [Best Battery Monitoring Systems: A Swift Power Guide](#)

Learn how to choose the best battery monitoring system for your needs. This guide covers key features, scalability, ease of use, and budget considerations ...



## **Battery Management System**

A Battery Management System (BMS) is crucial for managing lithium-ion and other types of battery packs, ensuring optimal performance, longevity, and safety. Choosing the right ...



## [How Do I Choose the Right BMS? A Comprehensive Guide](#)

A BMS is an essential component of any battery system, as it helps to maintain the health and safety of your batteries. In this article, we will guide you through the different aspects of ...



### **Comparison Overview: How to Choose from Types of Battery ...**

Battery Management System (BMS) plays an essential role in optimizing the performance, safety, and lifespan of batteries in various applications.



### **How to choose BMS for LiFePO4?**

Selecting the right Battery Management System (BMS) for your Lithium Iron Phosphate (LiFePO4) batteries is crucial for ensuring optimal performance, safety, and ...



### [How To Choose A BMS For Lithium Batteries](#)

When choosing a BMS for a lithium-ion battery, the most important aspect to consider is the maximum current rating of the BMS. In addition to that, you need to make sure ...





## Contact Us

---

For catalog requests, pricing, or partnerships, please visit:  
<https://www.motheopreprimary.co.za>